

Quick Start Guide

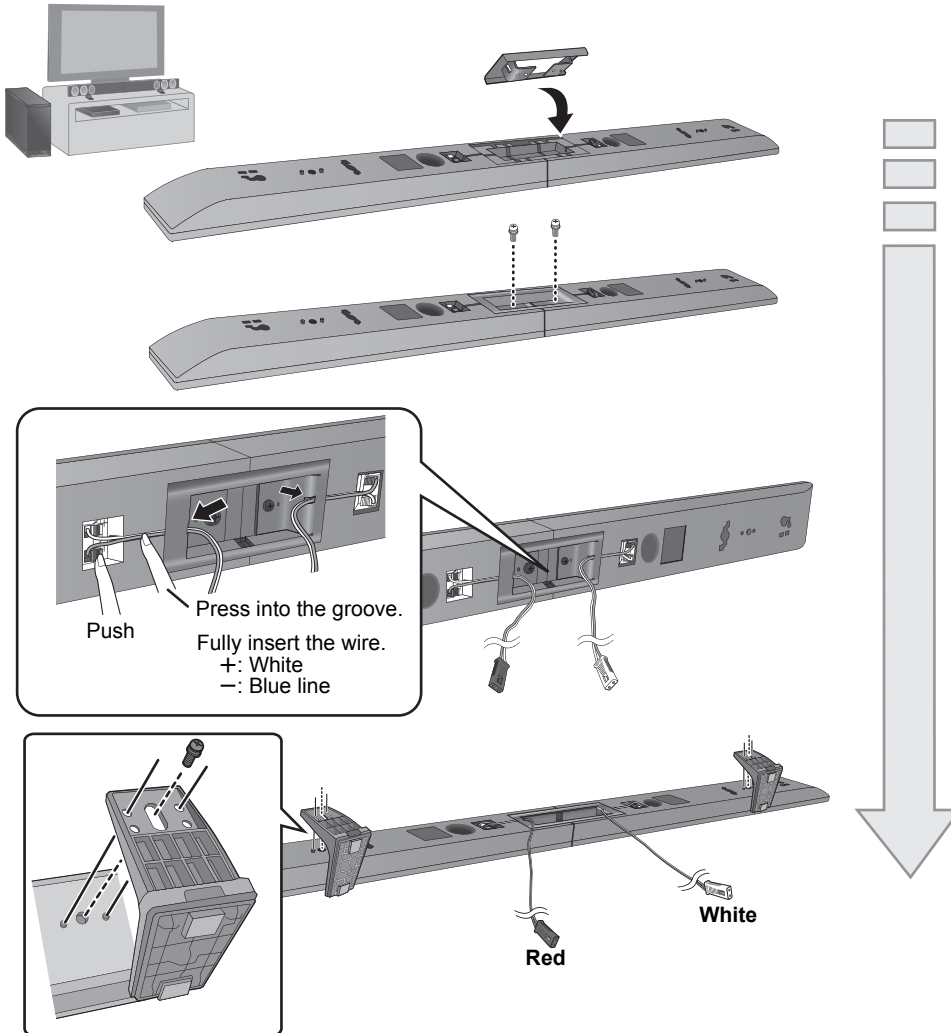
Home Theater Audio System SC-HTB370

Panasonic

Step 1: Choose the configuration that is right for you

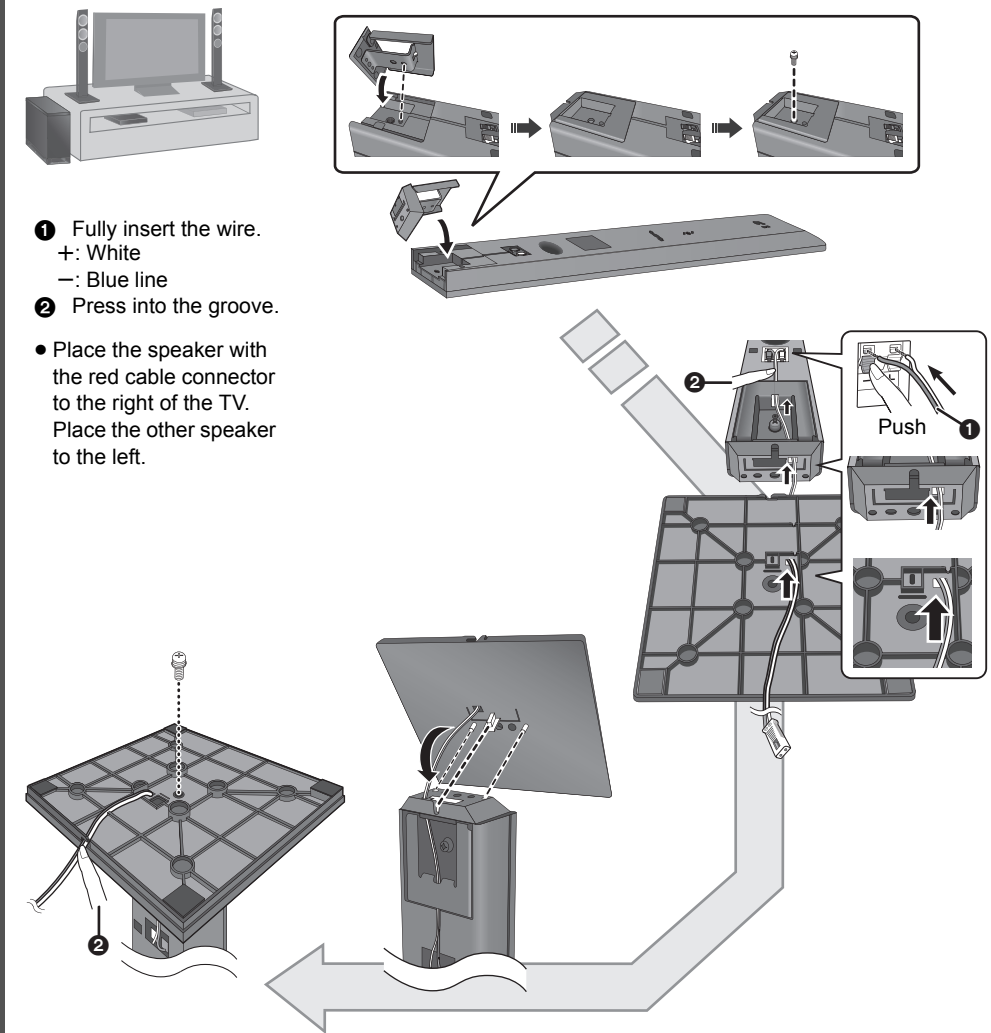
Place the speakers horizontally

To prevent damage or scratches, lay down a soft cloth and perform the assembly on it.



Place the speakers vertically

To prevent damage or scratches, lay down a soft cloth and perform the assembly on it.



If you have any questions, contact:

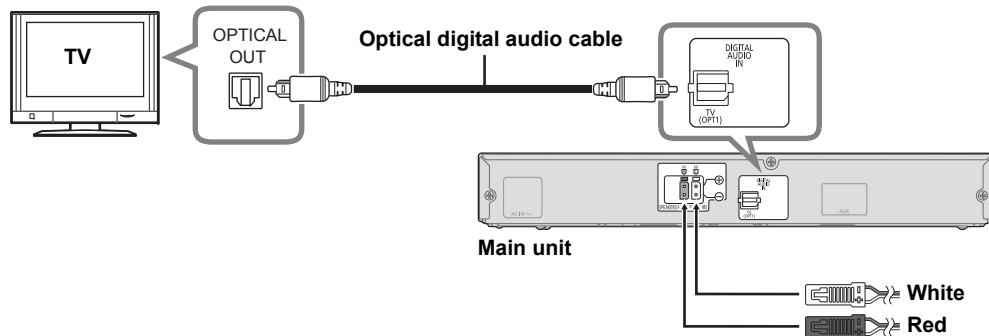
U.S.A. and Puerto Rico: 1-800-211-PANA (7262)
Mon-Fri: 9 am–9 pm (EST) Lunes-Viernes
Sat-Sun: 10 am–7 pm (EST) Sabado-Domingo
www.Panasonic.com/help

Canada:
Telephone: 1-800-561-5505
E-mail link: "Support → contact us → email" on www.panasonic.ca

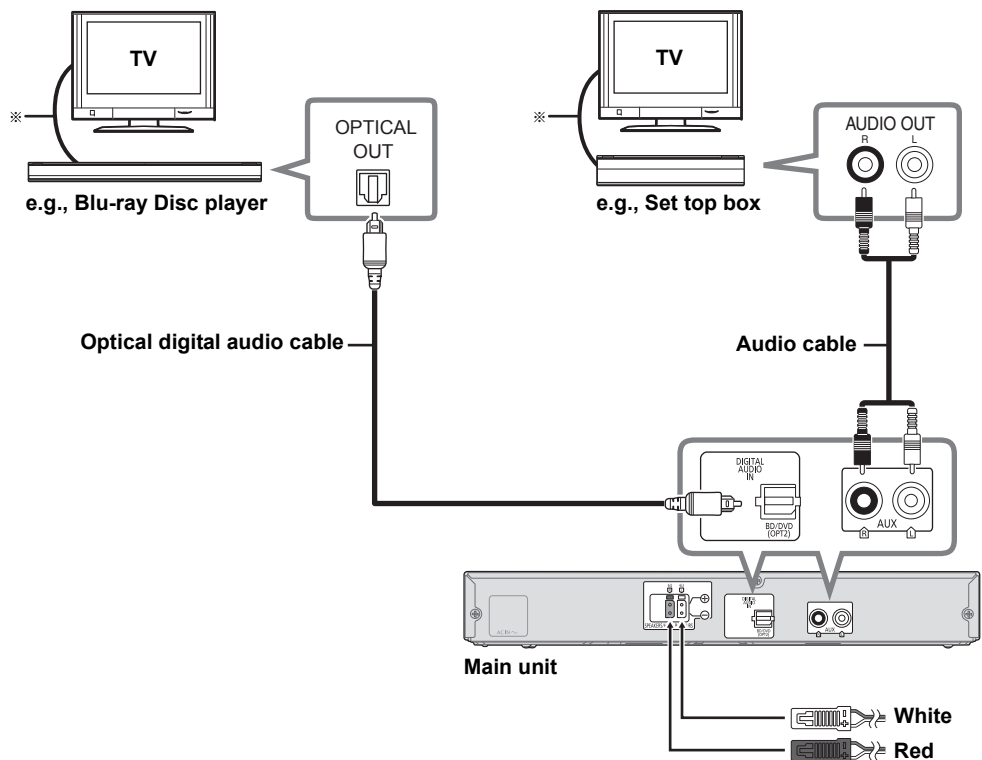
Step 2: Connect the cables

Do not connect the AC power supply cord to the main unit and the active subwoofer until all other connections are completed.

Connection with the TV



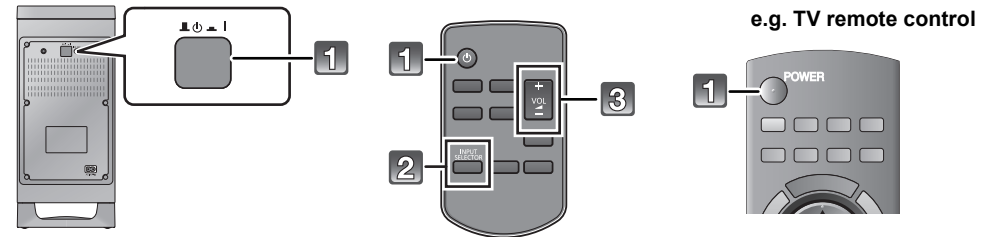
Connection with other devices



※ Refer to the operating instructions of the respective devices for the optimal connection.

Using this system

Using with a TV



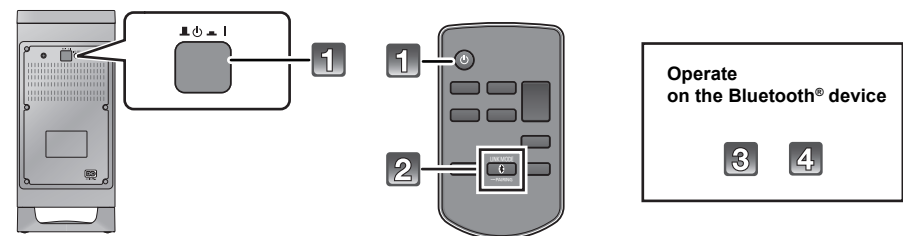
- 1 Turn on the main unit, active subwoofer and the TV.
- 2 Press [INPUT SELECTOR] to select the TV sound.
- 3 Press [+ VOL -] to adjust the volume.

• If there is sound from the TV's speakers too, then use the TV's remote control to lower the volume to minimum.

Using with a Bluetooth® device

Preparation

- Turn on the Bluetooth® feature of the device and place the device near the main unit.



On this system

- 1 Turn on the main unit and the active subwoofer.
- 2 Press [BT].

On the Bluetooth® device

- 3 Select "SC-HTB370" from the Bluetooth® device's Bluetooth® menu.
- 4 Start the playback.

For wall mounting and other details, be sure to refer to the Owner's Manual.