

# Twilight Day



LEXINGTON





- 6 Bedroom
- 24 Dining Room
- 50 Living Room
- 94 Media Room
- 100 Details
- 102 Visual Index

*The morning mist drapes the air, and calms the slightest stir of breeze off the water. Empty glasses on the porch recall an evening shared with family and friends. We invite you to pause and savor these moments of quiet comfort...moments of reflection that will inspire you to look at familiar things with a renewed sense of appreciation. We invite you to experience Twilight Bay from Lexington – a collection that offers a fresh new perspective on sophisticated casual living.*



*Inspired by timeless French and American traditional styling, designs span two cultures to create a blending of great individual pieces. The continuity of the look is achieved through the artful combination of three distinctive finishes – the warm saddle coloration of Chestnut, the vintage charm of Antique Linen, and the weathered beauty of Driftwood.*

*Upholstery designs reflect the casual elegance of chic French Laundry styling, with signature elements like washed linen, slipcover tailoring, authentic document patterns, and pewter nailhead trim. The cushioning is relaxed and inviting, while soft neutral colors allow for an eclectic blending of fabrics and finishes.*

*Twilight Bay is designed to encourage the art of self-expression...offering permission to mix and match pieces to create a look that beautifully expresses your style. Traditional designs are infused with a modern perspective, and a familiar look is transformed into a fresh new interpretation of casual elegant style.*

LEXINGTON



# THE FINISH STORY

One of the tenets of great interior design is that color, character and texture play a pivotal role in creating visual interest and adding drama to a room. The essence of *Twilight Bay* is found in the blending of three unique and complementary finishes in such a way that the look is fresh and the designs reflect your personal style.

Timeless French and American traditional designs offer a common theme, giving you “permission” to mix and match items and finishes. The neutral color palette ensures harmony in an eclectic presentation. *Twilight Bay* offers evidence that applying a non-traditional finish to a traditional design can be transformational.



The Chestnut finish is a warm saddle coloration, with gentle distressing and a feeling of familiarity. Antique Linen is an aged white crackle finish

with moderate distressing and rub-through to a slate coloration beneath.



Driftwood is a soft taupe-gray painted finish over wood that has been textured to emulate the effects of weather and age. The blending of three distinctive finishes reveals a new sophisticated interpretation of casual elegant style.



We invite you to enjoy the *Twilight Bay* introductory video, shot on location in Isle of Palms, SC. It is posted at [lexington.com](http://lexington.com),

[facebook.com/lexington](https://www.facebook.com/lexington), or [youtube.com/lexingtonfurniture](https://www.youtube.com/lexingtonfurniture).

# THE FABRIC STORY

Inspirational lifestyle design incorporates an elegant blending of wood and upholstered furniture. *Twilight Bay* showcases a fresh new design perspective by infusing the distinctive signature look of French Laundry styling into both the wood and upholstered pieces.



French Laundry styling originated in Europe, where artisans took woven hopsack, and



upholstered the fabric on exposed wood chairs using steel tacks. Often, the fabric was decorated with hand stenciling that took the form of monogrammed initials, flowing script or scenic patterns. The most popular frames were beautifully carved bergère chairs.



The current iteration of French Laundry styling includes casual slipcover tailoring, nailhead trim applied over ribbon tape and relaxed cushioning. The palette



of neutral fabrics includes washed linen, Merino wool, tone-on-tone crewel, and vintage printed documents. The soft colors facilitate the eclectic blending of fabrics and finishes to achieve a relaxed but elegant look.



# Twilight Bay



## BEDROOM

More than any other living area in a home, the bedroom is the most personal expression of your individual style. With Twilight Bay, the ability to blend finishes and textures offers you limitless options in creating a sanctuary that reflects your personality and fits your lifestyle. Notice how the French Laundry elements in the upholstery and bed linens pull the room together with an effective layering of color and texture.

Hathaway Panel Bed, King  
351-144C  
80½W x 89½L x 68H in.

Brandon Night Chest  
350-624  
29½W x 18½D x 30H in.

Isabella Chair  
1545-11  
31½W x 36D x 39½H in.

Isabella Ottoman  
1545-44  
28½W x 21D x 19H in.





Twilight Bay offers four nightstand options...each with a unique design. The Brandon Chest, shown below, features an apothecary drawer configuration offering a pleasing symmetry to the room. On pages 83 and 91, you will see that the piece is equally dramatic in a living room setting.



Left  
Hathaway Panel Bed, King  
351-144C  
80¾W x 89¾L x 68H in.

Brandon Night Chest  
352-624  
29¾W x 18¾D x 30H in.

Right  
Hathaway Panel Bed, King  
351-144C

Wayside Dresser  
351-221  
43W x 18D x 36H in.







Hathaway Panel Bed, King  
350-144C  
80½W x 89¼L x 68H in.

Caroline Nightstand  
350-621  
32W x 18D x 32H in.

Mayfair Nightstand  
350-622  
30W x 19D x 30H in.





**Margaux**  
Upholstered Bed, King  
353-134C  
81½W x 89L x 74¼H in.

**Caroline Nightstand**  
351-621  
32W x 18D x 32H in.

**Julianna Chair**  
1592-11  
30½W x 33½D x 39H in.





*Nailhead trim applied over a tone-on-tone linen tape is a signature element of French Laundry styling, and a defining feature of the Margaux upholstered bed and headboard. Its tailoring speaks to hand craftsmanship and attention to detail.*



Bottom Left  
Harper Nightstand  
350-623  
18W x 18D x 29H in.

Hathaway  
Panel Headboard, Twin  
351-141HB  
41½W x 61½H in.

Right  
Margaux  
Upholstered Headboard, Twin  
353-131HB  
42W x 66H in.

Harper Nightstand  
351-623





Hathaway Panel Headboard, Twin  
350-141HB  
41½W x 61½H in.

Brandon Night Chest  
350-624  
29¾W x 18¼D x 30H in.

Isabella Chair  
1545-11  
31½W x 36D x 39½H in.



*Twin beds are becoming increasingly popular, yet most are designed for the youth customer. Twilight Bay offers the Margaux upholstered headboard and the Hathaway headboard in twin size. Shown here in different finishes, the looks are both sophisticated and elegant.*

Right  
Hathaway Panel Headboard,  
Twin  
351-141HB

Mayfair Nightstand  
351-622  
30W x 19D x 30H in.







Above  
**Hathaway Panel Headboard, Twin**  
 351-141HB  
 41 $\frac{1}{4}$ W x 61 $\frac{1}{2}$ H in.

**Mayfair Nightstand**  
 351-622  
 30W x 19D x 30H in.

Left  
**Mayfair Nightstand**  
 350-622



Above  
**Caroline Nightstand**  
 350-621  
 32W x 18D x 32H in.

**Hathaway Panel Bed, King**  
 350-144C  
 80 $\frac{1}{4}$ W x 89 $\frac{1}{4}$ L x 68H in.

Right  
**Caroline Nightstand**  
 351-621







Wayside Dresser  
350-221

Above and Right  
Hathaway  
Panel Bed, King  
351-144C  
80 $\frac{1}{4}$ W x 89 $\frac{1}{4}$ L x 68H in.

Wayside Dresser  
351-221  
43W x 18D x 36H in.



Childress Mirror  
351-205  
36½W x 46H in.

Julianna Chair  
1592-11  
30½W x 33½D x 39H in.

Devereaux Dresser  
351-222  
68W x 21½D x 38H in.

Bailey Chairside Table  
351-951  
21¼W x 20¼D x 26H in.



Right  
Weston Mirror  
350-201  
38¾ in. diameter

Devereaux Dresser  
350-222



## DINING ROOM

The joy of entertaining often comes in bringing a large group together.

The Ashton Dining Table includes three 22-inch leaves, offering you the option of seating as few as six or as many as twelve guests in exceptional style. Fully extended, you might find the chalk boards helpful in finding your designated seat...

Ashton Rectangular Dining Table  
350-877

150W x 46D x 30H in.  
*Shown with 3 leaves*

Wingate Side Chair  
350-880-01  
20½W x 22½D x 38H in.

Wingate Arm Chair  
350-881-01  
23¾W x 22D x 38H in.





*The Ashton Dining Table is a beautiful showcase for the warm Chestnut finish. On the following page, the table is shown without leaves, accommodating six chairs in a more intimate setting. Both chair styles work well with the table design...the Wingate, shown here, is casual while the Byerly is more elegant.*



**Ashton Rectangular Dining Table**  
350-877  
150W x 46D x 30H in.

**Wingate Side Chair**  
350-880-01  
20½W x 22½D x 38H in.

**Wingate Arm Chair**  
350-881-01  
23¾W x 22D x 38H in.





Ashton Rectangular  
Dining Table  
350-877  
84W x 46D x 30H in.

Byerly Arm Chair  
351-883-01  
26W x 23½D x 41¾H in.

Byerly Side Chair  
351-882-01  
21W x 23½D x 41¾H in.

Hartley Cabinet  
351-691  
32½W x 20D x 87H in.





The Barrett Dining Table, with its graceful scalloped edge and elegant twisted pedestal base, is available in two sizes. The 60-inch version is shown here, and the 48-inch version is shown on the following page. For homes with grand entrances, the smaller version is dramatic as a center table for the foyer.



60" Diameter  
Scalloped Edge Top

**Barrett Dining Table**  
351-875C  
60 in. diameter x 30H in.

**Byerly Side Chair**  
352-882  
21W x 23½D x 41¾H in.

**Pierpoint Display Cabinet**  
354-864c  
43W x 18D x 88H in.







48" Diameter  
Scalloped Edge Top

**Barrett Dining Table**  
351-870C  
48-in. diameter x 30H in.

**Byerly Arm Chair**  
350-883  
26W x 23½D x 41¾H in.







**Barrett Dining Table**  
350-875C  
60 in. diameter x 30H in.

**Byerly Side Chair**  
351-882-01  
21W x 23½D x 41¾H in.

**Pierpoint  
Display Cabinet**  
350-864C  
43W x 18D x 88H in.



**Barrett Dining Table**  
350-870C  
48-in. diameter x 30H in.



**Barrett Dining Table**  
350-875C



*The Wingate chairs are a study in casual elegance. The pierced ladder backs speak to craftsmanship and attention to detail. Natural hand-woven rush seats are a wonderful historical reference. The tie-on seat cushions, in a printed document pattern on linen, reflect classic French Laundry styling.*



**Wingate Side Chair**  
350-880-01  
20½W x 22½D x 38H in.

**Wingate Arm Chair**  
350-881-01  
23¾W x 22D x 38H in.







Byerly Side Chair  
351-882-01  
21W x 23½D x 41¾H in.

Barrett Dining Table  
350-875C  
60 in. diameter x 30H in.



Right  
Byerly Arm Chair  
350-883-01  
26W x 23½D x 41¾H in.

Byerly Side Chair  
350-882-01  
21W x 23½D x 41¾H in.





Byerly Side Chair  
352-882-01

Barrett Dining Table  
351-870C  
48-in. diameter x 30H in.

Pierpoint Display Cabinet  
354-864C  
43W x 18D x 88H in.



Byerly Side Chair  
352-882-01  
21W x 23½D x 41¼H in.

Byerly Arm Chair  
352-883-01  
26W x 23½D x 41¼H in.



Shelter Island Bistro Table  
352-873  
66W x 41D x 36½H in.

Dalton Counter Stool  
352-815-01  
19W x 20½D x 36½H in.



*The Shelter Island Bistro Table is the collection's signature piece. Its burnished stainless steel top is anchored with large pewter nails. The base is a showcase for the Driftwood finish. The wood is textured to create a weathered effect, and then finished in a custom taupe-gray coloration to highlight the grain pattern. The look is casual, but the styling is extraordinary.*







Above  
Merideth Hutch  
351-919  
62W x 20D x 49½H in.

Merideth Console  
351-909  
59¼W x 18½D x 35½H in.

Right  
Merideth Hutch  
350-919

Merideth Console  
350-909



Far Right  
Shelter Island Bistro Table  
352-873  
66W x 41D x 36½H in.

Dalton Counter Stool  
352-815-01  
19W x 20½D x 36½H in.







Left  
Dalton Counter Stool  
352-815-01  
19W x 20%D x 36½H in.



Right  
Dalton Bar Stool  
352-816-01  
19W x 20%D x 42½H in.



*The concave back and serpentine vertical supports on the Dalton Bar and Counter Stools lend a softness to the silhouette that is enhanced by the round shape of the hand-woven rush swivel seats. The Driftwood finish highlights the use of metal on the backs of the stools and kick plates.*





**Pierpoint  
Display Cabinet**  
354-864C  
43W x 18D x 88H in.



*The Pierpoint Cabinet, in the Antique Linen finish, features the Driftwood finish as an accent on the back panel. The marriage of colors creates both depth and visual interest when viewed through antique glass doors.*



**Pierpoint  
Display Cabinet**  
350-864C

**Childress Mirror**  
350-205  
36½W x 46H in.

**Kendall Buffet**  
350-852  
72½W x 20D x 34½H in.





## LIVING ROOM

Twilight Bay is a wonderful mix of traditional and transitional styling. Here, the informal stone fireplace blends with the formal mantle and crown molding. The casual stripe on the sofa blends with the elegant pattern on the club chair. The Juliette Mirror, over the fireplace, is one of our favorites, with a perimeter accent of burnished stainless steel that ties back to the complementary top on the Wyatt Cocktail Table.

Phoebe Lamp Table  
352-950  
25-in. diameter x 26H in.

Carley Sofa  
7859-33  
94W x 41D x 37H in.

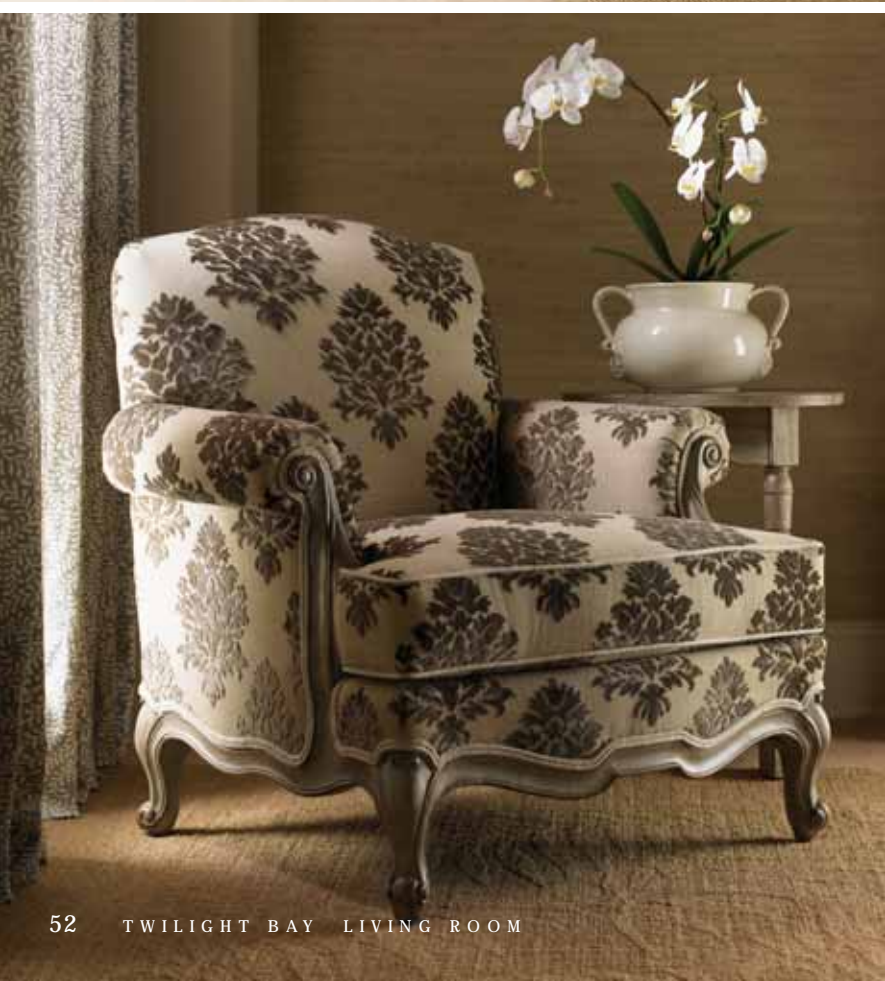
Abbey Chair  
1541-11  
37½W x 36D x 38H in.

Juliette Mirror  
352-902  
38-in. diameter

Wyatt Cocktail Table  
352-955  
40W x 40D x 19H in.







Above  
**Carley Sofa**  
 7859-33  
 94W x 41D x 37H in.

Left  
**Abbey Chair**  
 1541-11  
 37½W x 36D x 38H in.

Right  
**Juliette Mirror**  
 352-902  
 38-in. diameter  
**Wyatt Cocktail Table**  
 352-955  
 40W x 40D x 19H in.







Lewiston  
Cocktail Table  
350-943  
60W x 34D x 20H in.

Sydney Slipcover  
Left Arm Facing  
Love Seat  
7373-52L-02  
71W x 40½D x 33¾H in.

Sydney Slipcover  
Corner Chair  
7373-51CR-02  
39¾W x 56D x 33¾H in.

Sydney Slipcover  
Right Arm Facing  
Love Seat  
7373-52R-02  
71W x 40½D x 33¾H in.

Phoebe Lamp Table  
350-950  
25-in. diameter x 26H in.

Merideth Console  
350-909  
59¾W x 18½D x 35¾H in.







Sydney Slipcover Sofa  
7373-33-02  
93W x 40½D x 33¾H in.



*The turned legs and cross stretchers on the Lewiston Cocktail Table give it a sense of proportion that balances the more generous scale required to accommodate seating in a large gathering room.*



Lewiston  
Cocktail Table  
350-943  
60W x 34D x 20H in.

Sydney Slipcover  
Corner Chair  
7373-51CR-02  
39¾W x 56D x 33¾H in.

Sydney Slipcover  
Left Arm Facing Love Seat  
7373-52L-02  
71W x 40¾D x 33¾H in.

Sydney Slipcover  
Right Arm Facing Love Seat  
7373-52R-02  
71W x 40¾D x 33¾H in.





Keaton End Table  
351-942  
32W x 24D x 26H in.

Sydney Slipcover Sofa  
7373-33-01  
93W x 40½D x 33¾H in.

Holloway Cocktail Table  
351-953  
42 in. diameter x 19H in.

Abbey Chair  
1541-11  
37½W x 36D x 38H in.





Left  
Holloway Cocktail Table  
351-953  
42 in. diameter x 19H in.

Right  
Holloway Cocktail Table  
350-953

Sydney Slipcover Sofa  
7373-33-02  
93W x 40½D x 33¾H in.

*The round Holloway Cocktail Table offers a generous view of the woven cane shelf through a beveled glass top. The cane inserts are patterned in quarters and provide contrast, in pattern and texture, in either the Chestnut or Antique Linen finish.*







Top Left  
Bailey Chairside Table  
350-951  
21½W x 20¼D x 26H in.

Isabella Chair  
1545-11  
31½W x 36D x 39½H in.

Top Right  
Bailey  
Chairside Table  
352-951

Abbey Chair  
1541-11  
37½W x 36D x 38H in.

Bottom Right  
Bailey  
Chairside Table  
351-951

Isabella Chair  
1545-11

Right  
Bailey Chairside Table  
352-951  
351-951  
350-951







Phoebe Lamp Table  
351-950



Phoebe Lamp Table  
352-950



Sydney Slipcover  
Left Arm Facing Love Seat  
7373-52L-02  
71W x 40<sup>3</sup>/<sub>4</sub>D x 33<sup>3</sup>/<sub>4</sub>H in.

Sydney Slipcover  
Right Arm Facing Love Seat  
7373-52R-02  
71W x 40<sup>3</sup>/<sub>4</sub>D x 33<sup>3</sup>/<sub>4</sub>H in.

Sydney Slipcover  
Corner Chair  
7373-51CR-02  
39<sup>3</sup>/<sub>4</sub>W x 56D x 33<sup>3</sup>/<sub>4</sub>H in.

Phoebe Lamp Table  
350-950  
25-in. diameter x 26H in.





Keaton End Table  
350-942  
32W x 24D x 26H in.

Abbey Chair  
1541-11  
37½W x 36D x 38H in.



Jasmine Ottoman  
7515-44  
35W x 35D x 21H in.

Carley Sofa  
7859-33  
94W x 41D x 37H in.

Keaton End Table  
350-942







Isabella Chair  
1545-11  
31½W x 36D x 39½H in.

Isabella Ottoman  
1545-44  
28½W x 21D x 19H in.

Jasmine Ottoman  
7515-44  
35W x 35D x 21H in.

Carley Sofa  
7859-33  
94W x 41D x 37H in.

Keaton End Table  
350-942  
32W x 24D x 26H in.

Abbey Chair  
1541-11  
37½W x 36D x 38H in.







**Barrett Dining Table**  
351-870C  
48-in. diameter x 30H in.



**Keaton End Table**  
351-942  
32W x 24D x 26H in.

**Abbey Chair**  
1541-11  
37½W x 36D x 38H in.





Above  
Carley Sofa  
7859-33  
94W x 41D x 37H in.

Right  
Keaton End Table  
352-942  
351-942  
350-942  
32W x 24D x 26H in.







Sydney Slipcover Chair  
7373-11-01  
37W x 40½D x 33¾H in.

Sydney Slipcover Ottoman  
7373-44-01  
32W x 23D x 16¾H in.

Halsey Bunching Chest  
352-974  
39W x 18½D x 36¾H in.

Right  
Wyatt Lamp Table  
352-952  
24W x 24D x 26H in.







*The Olivia Tray Table is special in both form and function, with four adjustable pull-out shelves for storage, and woven cane inserts on the end panels.*



Above Left  
Olivia Tray Table  
350-941  
25½W x 18D x 27H in.

Abbey Chair  
1541-11  
37½W x 36D x 38H in.

Left, Right and Above  
Mallory Chair  
7532-11  
37W x 36D x 35½H in.

Right  
Olivia Tray Table  
351-941







Isabella Chair  
1545-11  
31½W x 36D x 39½H in.

Weston Mirror  
350-201  
38¾ in. diameter

Devereaux Dresser  
350-222  
68W x 21½D x 38H in.



Right  
Weston Mirror  
351-201

Wayside Dresser  
351-221  
43W x 18D x 36H in.



Julianna Chair  
1592-11  
30½W x 33½D x 39H in.

Harper Nightstand  
351-623  
18W x 18D x 29H in.



Right  
Halsey  
Bunching Chest  
352-974  
39W x 18½D x 36½H in.

Julianna Chair  
1592-11





The Halsey Chest, shown below as a pair, features a classic apothecary drawer design. The top row is a pair of drop-front drawers, while the four lower rows are actually a pair of doors that open in the middle. The Brandon chest to the right, which also functions beautifully as a night stand, has four drawers. Both pieces demonstrate the elegance of symmetry.



Childress Mirror  
350-205  
36½W x 46H in.

Halsey  
Bunching Chest  
350-974  
39W x 18¼D x 36¼H in.



Right  
Brandon Night Chest  
350-624  
29¾W x 18¼D x 30H in.







Veronica Console Table  
350-972  
84W x 20D x 34H in.

Mallory Chair  
7532-11  
37W x 36D x 35½H in.

*The Veronica Console Table makes a striking entrance piece, or functions beautifully in a supporting role as a sofa table behind your favorite custom upholstery.*

Right  
Juliette Mirror  
352-902  
38-in. diameter

Veronica Console Table  
352-972

Wingate Side Chair  
350-880-01  
20½W x 22½D x 38H in.







**Sydney Slipcover Chair**  
7373-11-02  
37W x 40½D x 33¾H in.

**Sydney Slipcover Ottoman**  
7373-44-02  
32W x 23D x 16¾H in.

**Devereaux Dresser**  
350-222  
68W x 21½D x 38H in.

*The Merideth Console, shown on the opposite page, can be used as a stand-alone piece or in combination with the hutch, as shown here. The pair is also shown as a home entertainment unit on page 97.*



**Merideth Hutch**  
350-919  
62W x 20D x 49¼H in.

**Merideth Console**  
350-909  
59¼W x 18¾D x 35¾H in.

**Merideth Console**  
350-909  
59¼W x 18¾D x 35¾H in.







Left Bottom  
Byerly Arm Chair  
351-883-01  
26W x 23½D x 41¼H in.

Colette Secretary  
350-933  
47½W x 21D x 42¼H in.

Left and Right Top  
Nicholas Chair  
1536-11  
28½W x 27D x 38¼H in.

Right Bottom  
Colette Secretary  
354-933  
47½W x 21D x 42¼H in.

Byerly Arm Chair  
352-883-01  
26W x 23½D x 41¼H in.



Colette Hutch  
354-932  
47½W x 14½D x 44¼H in.

Colette Secretary  
354-933  
47½W x 21D x 42¼H in.

Byerly Arm Chair  
352-883-01  
26W x 23½D x 41¼H in.





Hartley Cabinet  
352-691  
32½W x 20D x 87H in.

Brandon Night Chest  
352-624  
29¼W x 18¼D x 30H in.

*The Hartley Cabinet works in several areas of the home, offering generous storage behind a pair of beautiful full-length louvered doors. There are two drawers at the bottom, two fixed shelves, and eight adjustable shelves. The cabinets are particularly dramatic when used in pairs. Storage has never looked so good.*





Hartley Cabinet  
350-691  
32½W x 20D x 87H in.

Isabella Chair  
1545-11  
31½W x 36D x 39½H in.



Right  
Hartley Cabinet  
351-691

Byerly Side Chair  
351-882-01  
21W x 23½D x 41¼H in.





## MEDIA ROOM

We believe that your furnishings should be the hero in a media room and not the electronics. With that in mind, Twilight Bay offers an array of stylish designs to accommodate the electronics. Featured here is a three-piece configuration that makes a strong transitional design statement, while offering ample function and storage for the electronics.

Halsey Bunching Chest  
352-974  
39W x 18½D x 36½H in.

Andrews Entertainment Console  
352-907  
57¾W x 18½D x 36½H in.

Mallory Chair  
7532-11  
37W x 36D x 35½H in.







Above and Below Right  
Halsey Bunching Chest  
352-974  
39W x 18½D x 36½H in.



Right  
Merideth Hutch  
350-919  
62W x 20D x 49½H in.

Merideth Console  
350-909  
59¼W x 18½D x 35½H in.







Carley Sofa  
7859-33  
94W x 41D x 37H in.

Holloway Cocktail Table  
350-953  
42 in. diameter x 19H in.

Keaton End Table  
350-942  
32W x 24D x 26H in.

Andrews Entertainment Console  
350-907  
57½W x 18¼D x 36¼H in.



# DETAILS

## FINISHES



350 Chestnut - a warm saddle brown coloration with gentle distressing



351 Antique Linen - generously distressed white crackle with rub-through to a slate coloration beneath



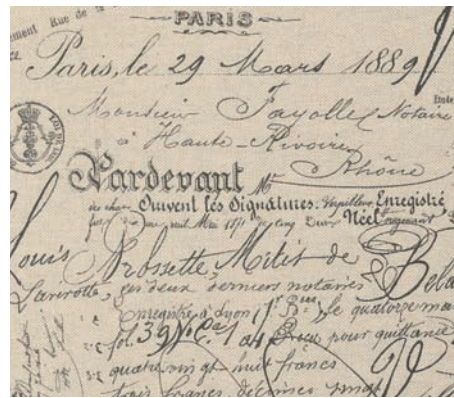
352 Driftwood - soft taupe-gray color on wood that has been textured to create a weathered effect

353 Parchment - a soft ivory coloration with amber burnishing (exclusive to the feet on the Margaux Bed)  
 354 Antique Linen (exterior) & Driftwood (interior)

## DINING CHAIR FABRICS



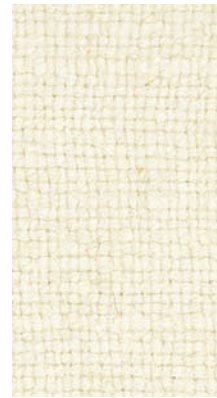
Bridgeport  
479311  
A basket-weave textured cotton in a soft ivory coloration



Michelle  
483311  
A chocolate brown vintage document design printed on a natural colored linen weave



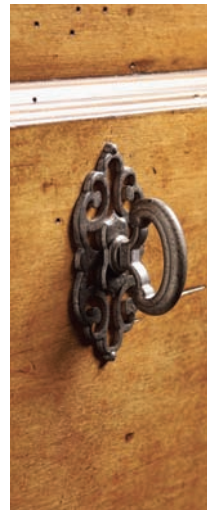
Gabrielle  
482871  
Taupe Linen (body)



Gabrielle  
482811  
Ivory Linen (trim)

## UPHOLSTERED BED FABRICS

## HARDWARE Custom designed, finished in an antique pewter



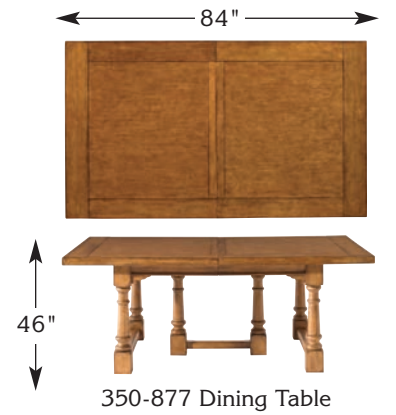
## DINING TABLE TOP CONFIGURATIONS



350-870C Dining Table  
Also available in 351 Antique Linen finish



350-875C Dining Table  
Also available in 351 Antique Linen finish



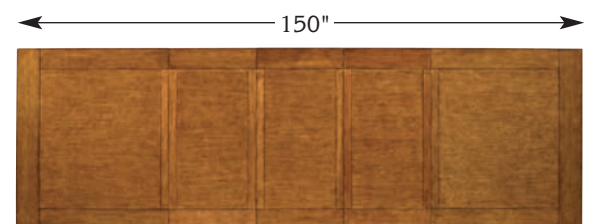
350-877 Dining Table



350-877 Dining Table (shown with (1) 22" leaf)



350-877 Dining Table (shown with (2) 22" leaves)



350-877 Dining Table (shown with (3) 22" leaves)



BEDROOM



**353-131HB**  
**Margaux Upholstered Headboard**  
 3/3 Twin  
 ½ in. nailhead trim  
 Overall size 42W x 66H in.  
 Headboard available only in fabric 482871  
 Gabrielle - A taupe linen; 482811 ivory  
 linen trim  
 Metal bed frame required to complete bed.  
 See options.  
 Shown on page 15

**353-133HB**  
**Margaux Upholstered Headboard**  
 5/0 Queen  
 ½ in. nailhead trim  
 Overall size 65¼W x 71½H in.  
 Headboard available only in fabric 482871  
 Gabrielle - A taupe linen; 482811 ivory  
 linen trim  
 Metal bed frame required to complete bed.  
 See options.

**353-134HB**  
**Margaux Upholstered Headboard**  
 6/6 King  
 ½ in. nailhead trim  
 Overall size 81¼W x 74¼H in.  
 Headboard available only in fabric 482871  
 Gabrielle - A taupe linen; 482811 ivory linen trim  
 Metal bed frame required to complete bed.  
 See options.

**353-135HB**  
**Margaux Upholstered Headboard**  
 6/0 California King  
 ½ in. nailhead trim  
 Overall size 77¼W x 74¼H in.  
 Headboard available only in fabric 482871  
 Gabrielle - A taupe linen; 482811 ivory linen trim  
 Metal bed frame required to complete bed.  
 See options.



**353-133C Margaux Upholstered Bed**  
 5/0 Queen  
 ½ in. nailhead trim  
 Headboard 65¼W x 71½H in.  
 Footboard 65¼W x 16¼H in.  
 Overall length 89 in.  
 Bottom of side rail to floor 5 in.  
 Bottom of box springs to floor 9 in.  
 Consists of:  
 -133HB Margaux Upholstered Headboard  
 -133FB Margaux Upholstered Footboard  
 -133SR Upholstered Side Rails/Support  
 Bed available only in fabric 482871 Gabrielle -  
 A taupe linen; 482811 ivory linen trim

**353-134C Margaux Upholstered Bed**  
 6/6 King  
 ½ in. nailhead trim  
 Headboard 81¼W x 74¼H in.  
 Footboard 81¼W x 16¼H in.  
 Overall length 89 in.  
 Bottom of side rail to floor 5 in.  
 Bottom of box springs to floor 9 in.  
 Consists of:  
 -134HB Margaux Upholstered Headboard  
 -134FB Margaux Upholstered Footboard  
 -134SR Upholstered Side Rails/Support  
 Bed available only in fabric 482871 Gabrielle -  
 A taupe linen; 482811 ivory linen trim  
 Shown on pages 12 and 13

**353-135C Margaux Upholstered Bed**  
 6/0 California King  
 ½ in. nailhead trim  
 Headboard 77¼W x 74¼H in.  
 Footboard 77¼W x 16¼H in.  
 Overall length 93 in.  
 Bottom of side rail to floor 5 in.  
 Bottom of box springs to floor 9 in.  
 Consists of:  
 -135HB Margaux Upholstered Headboard  
 -135FB Margaux Upholstered Footboard  
 -135SR Upholstered Side Rails/Support  
 Bed available only in fabric 482871 Gabrielle -  
 A taupe linen; 482811 ivory linen trim



**350/351-141HB**  
**Hathaway Panel Headboard**  
 3/3 Twin  
 Overall size 41¼W x 61½H in.  
 Post 58¼ in.  
 Metal bed frame required to complete bed.  
 See options.  
 Shown in -350 Chestnut finish on pages 16, 18  
 and 19  
 Shown in -351 Antique Linen finish on pages 17  
 and 18

**350/351-143HB**  
**Hathaway Panel Headboard**  
 5/0 Queen  
 Overall size 63¼W x 68H in.  
 Post 65H in.  
 Metal bed frame required to complete bed.  
 See options.

**350/351-144HB**  
**Hathaway Panel Headboard**  
 6/6 King  
 Overall size 80¼W x 68H in.  
 Post 65H in.  
 Metal bed frame required to complete bed.  
 See options.

**350/351-145HB**  
**Hathaway Panel Headboard**  
 6/0 California King  
 Overall size 76¼W x 68H in.  
 Post 65H in.  
 Metal bed frame required to complete bed.  
 See options.



**350/351-143C**  
**Hathaway Panel Bed**  
 5/0 Queen  
 Headboard 63¼W x 68H in.  
 Post 65H in.  
 Footboard 63¼W x 32¼H in.  
 Post 37¼H in.  
 Overall length 89¼ in.  
 Bottom of side rail to floor 7½ in.  
 Bottom of box springs to floor 9¼ in.  
 Consists of:  
 -143HB Headboard  
 -143FB Footboard  
 -143SR Side Rails/Support

**350/351-144C**  
**Hathaway Panel Bed**  
 6/6 King  
 Headboard 80¼W x 68H in.  
 Post 65H in.  
 Footboard 80¼W x 32¼H in.  
 Post 37¼H in.  
 Overall length 89¼ in.  
 Bottom of side rail to floor 7½ in.  
 Bottom of box springs to floor 9¼ in.  
 Consists of:  
 -144HB Headboard  
 -144FB Footboard  
 -144SR Side Rails/Support  
 Shown in -350 Chestnut finish on pages 10 and 11  
 Shown in -351 Antique Linen finish on pages 6, 7,  
 9, 20 and 21

**350/351-145C**  
**Hathaway Panel Bed**  
 6/0 California King  
 Headboard 76¼W x 68H in.  
 Post 65H in.  
 Footboard 76¼W x 32¼H in.  
 Post 37¼H in.  
 Overall length 93¼ in.  
 Bottom of side rail to floor 7½ in.  
 Bottom of box springs to floor 9¼ in.  
 Consists of:  
 -145HB Headboard  
 -145FB Footboard  
 -145SR Side Rails/Support



**350/351-201 Weston Mirror**  
 Overall framed size 38¼-in. diameter  
 Plate 28 in. diameter; 1-in. bevel  
 Shown in -350 Chestnut finish on pages 23 and 78  
 Shown in -351 Antique Linen finish on page 79



**350/351-205 Childress Mirror**  
 Overall framed size 36¼W x 46H in.  
 Plate 26W x 35¼H; 1-in. bevel  
 Can be used vertically or horizontally  
 Shown in -350 Chestnut finish on pages 49 and 82  
 Shown in -351 Antique Linen finish on page 22



**350/351-221 Wayside Dresser**  
 Overall size 43W x 18D x 36H in.  
 3 drawers  
 Shown in -350 Chestnut finish on pages 19 and 20  
 Shown in -351 Antique Linen finish on pages 9,  
 19, 20, 21 and 79



**350/351-222 Devereaux Dresser**  
 Overall size 68W x 21¼D x 38H in.  
 6 drawers  
 Shown in -350 Chestnut finish on pages 23, 78  
 and 86  
 Shown in -351 Antique Linen finish on page 22



**350/351-621 Caroline Nightstand**  
 Overall size 32W x 18D x 32H in.  
 3 drawers  
 Shown in -350 Chestnut finish on page 19  
 Shown in -351 Antique Linen finish on pages  
 10, 12 and 13



**350/351-622 Mayfair Nightstand**  
 Overall size 30W x 19D x 30H in.  
 1 drawer; 1 shelf; casters  
 Shown in -350 Chestnut finish on pages 11  
 and 18  
 Shown in -351 Antique Linen finish on pages 17  
 and 18



**350/351-623 Harper Nightstand**  
 Overall size 18W x 18D x 29H in.  
 3 drawers; finished back  
 Shown in -350 Chestnut finish on page 14  
 Shown in -351 Antique Linen finish on pages 15  
 and 80



**350/352-624 Brandon Night Chest**  
 Overall size 29¼W x 18¼D x 30H in.  
 4 drawers  
 Shown in -350 Chestnut finish on pages 6, 7  
 and 16  
 Shown in -352 Driftwood finish on pages 8  
 and 90





**350/351/352-691 Hartley Cabinet**  
Overall size 32½W x 20D x 87H in.  
2 doors; 2 drawers; 10 shelves (8 adjustable);  
grommet for electrical cords  
Shown in -350 Chestnut finish on page 92  
Shown in -351 Antique Linen finish on pages 28  
and 93  
Shown in -352 Driftwood finish on pages 90  
and 91

## DINING ROOM



**352-873 Shelter Island Bistro Table**  
Overall size 66W x 41D x 36½H in.  
Bottom of apron to floor 28½  
Hammered stainless steel top; 4 drawers; ¾ in.  
nailhead trim  
**SOME ASSEMBLY REQUIRED**  
Shown on pages 42, 43 and 45



**352-815-01 Dalton Counter Stool**  
Overall size 19W x 20½D x 36½H in.  
Rush seat with metal back support  
Seat 18W x 18D x 24H in.  
**STOOL SHIPS ONE PER BOX**  
**STOOL SHIPS ASSEMBLED**  
Shown on pages 43, 45 and 46



**352-816-01 Dalton Bar Stool**  
Overall size 19W x 20½D x 42½H in.  
Rush seat with metal back support  
Seat 18W x 18D x 30H in.  
**STOOL SHIPS ONE PER BOX**  
**STOOL SHIPS ASSEMBLED**  
Shown on page 47



**350/351-870C Barrett Dining Table**  
Overall size 48-in. diameter x 30H in.  
Bottom of top to floor 29 in.  
Consists of:  
-870T Top 48-in. diameter x 2H in.  
-875B Base 34W x 34D x 28H in.  
**SOME ASSEMBLY REQUIRED**  
Shown in -350 Chestnut finish on page 34  
Shown in -351 Antique Linen finish on pages  
32, 33, 41 and 70



**350/351-875C Barrett Dining Table**  
Overall size 60 in. diameter x 30H in.  
Bottom of top to floor 29 in.  
Consists of:  
-875T Top 60 in. diameter x 2H in.  
-875B Base 34W x 34D x 28H in.  
**SOME ASSEMBLY REQUIRED**  
Shown in -350 Chestnut finish on pages 35  
and 38  
Shown in -351 Antique Linen finish on pages  
30 and 31



**350-877 Ashton Rectangular Dining Table**  
Overall size 84W x 46D x 30H in.  
Extends to 150 in. with (3) 22 in. leaves  
Bottom of apron to floor 28 in.  
Shown on pages 24, 25, 26, 27, 28 and 29



**350-880-01 Wingate Side Chair**  
Overall size 20½W x 22½D x 38H in.  
Rush seat with tie-on seat cushion  
Seat 20½W x 19D x 19½H in.  
Tie on seat cushion available only in fabric  
483311 Michelle - A chocolate brown vintage  
document design printed on a natural colored  
linen weave  
**CHAIR SHIPS TWO PER BOX**  
**CHAIR SHIPS ASSEMBLED**  
Shown on page 24, 25, 27, 37 and 85



**350-881-01 Wingate Arm Chair**  
Overall size 23½W x 22D x 38H in.  
Rush seat with tie-on seat cushion  
Seat 23½W x 19D x 19½H in., Arm 26½H in.  
Tie on seat cushion available only in fabric  
483311 Michelle - A chocolate brown vintage  
document design printed on a natural colored  
linen weave  
**CHAIR SHIPS TWO PER BOX**  
**CHAIR SHIPS ASSEMBLED**  
Shown on page 25, 27 and 37



**350/351/352-882-01 Byerly Side Chair**  
Overall size 21W x 23½D x 41½H in.  
¾ in. nailhead trim  
Seat 21W x 19D x 19½H in.  
Available only in standard fabric 479311  
Bridgeport - A basket-weave textured cotton  
in a soft ivory coloration  
**CHAIR SHIPS TWO PER BOX**  
**ASSEMBLY REQUIRED**  
Shown in -350 Chestnut finish on page 39  
Shown in -351 Antique Linen finish on pages 28,  
29, 31, 35 and 93  
Shown in -352 Driftwood finish on pages 40  
and 41

**350/351/352-882-479311 Byerly Side Chair**  
Overall size 21W x 23½D x 41½H in.  
¾ in. nailhead trim  
Seat 21W x 19D x 19½H in.  
Available only in standard fabric 479311  
Bridgeport - A basket-weave textured cotton  
in a soft ivory coloration  
**CHAIR SHIPS TWO PER BOX**  
**CHAIR SHIPS ASSEMBLED**

**350/351/352-882 Byerly Side Chair**  
Overall size 21W x 23½D x 41½H in.  
¾ in. nailhead trim  
Seat 21W x 19D x 19½H in.  
Available in any Lexington Upholstery fabric or  
COM. If no fabric is specified, chair will ship in  
the standard cover.  
COM requires 1.5 yards of 54-inch material  
with no repeat. Fabrics with a repeat in excess  
of 28" will require 20% additional yardage.  
See COM instructions inside front cover.

Custom Fabric Applications -  
Upcharge will apply to assembled price  
**CHAIR SHIPS TWO PER BOX**  
**CHAIR SHIPS ASSEMBLED**



**350/351/352-883-01 Byerly Arm Chair**  
Overall size 26W x 23½D x 41½H in.  
¾ in. nailhead trim  
Seat 22W x 19D x 19½H in.  
Arm 26½H in.  
Available only in standard fabric 479311  
Bridgeport - A basket-weave textured cotton  
in a soft ivory coloration  
**CHAIR SHIPS TWO PER BOX**  
**CHAIR SHIPS ASSEMBLED**  
Shown in -350 Chestnut finish on pages 33 and 39  
Shown in -351 Antique Linen finish on pages 28  
and 29  
Shown in -352 Driftwood finish on page 40

**350/351/352-883 Byerly Arm Chair**  
Overall size 26W x 23½D x 41½H in.  
¾ in. nailhead trim  
Seat 22W x 19D x 19½H in.  
Arm 26½H in.

Available in any Lexington Upholstery fabric or  
COM. If no fabric is specified, chair will ship in  
the standard cover.  
COM requires 1.5 yards of 54-inch material  
with no repeat. Fabrics with a repeat in excess  
of 28" will require 20% additional yardage.  
See COM instructions inside front cover.  
Custom Fabric Applications -  
Upcharge will apply to assembled price  
**CHAIR SHIPS ONE PER BOX**  
**CHAIR SHIPS ASSEMBLED**





**350-852 Kendall Buffet**  
Overall size 72½W x 20D x 34½H in.  
2 doors; 6 drawers (left and right side facing drawers have drop-fronts to accommodate media components; 4 center drawers are felt lined and the top center drawer is divided for silver); 4 adjustable shelves (2 with removable wine racks)  
Shown on page 49



**350/354-864C Pierpoint Display Cabinet**  
Overall size 43W x 18D x 88H in.  
Deck: 2 antique glass doors; 3 adjustable glass shelves; grooved for plates; antique glass end panels; lighted interior  
Deck 43W x 18D x 63H in.  
Base: 2 wood doors; 2 adjustable shelves  
Base 43W x 18D x 25H in.  
Consists of:  
-864D Deck  
-864B Base  
The 354 Pierpoint Display Cabinet is finished in Antique Linen and features a reversible Antique Linen or Driftwood back panel  
Shown in -350 Chestnut finish on pages 35 and 48  
Shown in -354 Antique Linen with Driftwood finish on pages 31, 41 and 48

## LIVING ROOM



**352-955 Wyatt Cocktail Table**  
Overall size 40W x 40D x 19H in.  
Hammered stainless steel top; ¼ in. nailhead trim  
Shown on pages 51 and 53



**352-952 Wyatt Lamp Table**  
Overall size 24W x 24D x 26H in.  
Hammered stainless steel top; 1 shelf; ¼ in. nailhead trim  
Shown on page 75



**350/351-953 Holloway Cocktail Table**  
Overall size 42 in. diameter x 19H in.  
Inset glass top; 1 wood-framed traditional hexagonal open weave cane shelf  
Glass top 35½ in. diameter x ¼ in. thick; 1 in. bevel  
SOME ASSEMBLY REQUIRED  
Shown in -350 Chestnut finish on pages 61 and 98  
Shown in -351 Antique Linen finish on pages 59 and 60



**350/351-941 Olivia Tray Table**  
Overall size 25½W x 18D x 27H in.  
4 removable pull-out shelves; traditional hexagonal open weave cane end panels  
Shown in -350 Chestnut finish on page 76  
Shown in -351 Antique Linen finish on page 77



**350-943 Lewiston Cocktail Table**  
Overall size 60W x 34D x 20H in.  
SOME ASSEMBLY REQUIRED  
Shown on pages 54 and 57



**350/351/352-942 Keaton End Table**  
Overall size 32W x 24D x 26H in.  
SOME ASSEMBLY REQUIRED  
Shown in -350 Chestnut finish on pages 66, 67, 69 and 73  
Shown in -351 Antique Linen finish on pages 58, 71 and 73  
Shown in -352 Driftwood finish on page 73



**350/351/352-951 Bailey Chairside Table**  
Overall size 21½W x 20½D x 26H in.  
1 shelf  
SOME ASSEMBLY REQUIRED  
Shown in -350 Chestnut finish on pages 62 and 63  
Shown in -351 Antique Linen finish on pages 22, 62 and 63  
Shown in -352 Driftwood finish on pages 62 and 63



**350/352-972 Veronica Console Table**  
Overall size 84W x 20D x 34H in.  
SOME ASSEMBLY REQUIRED  
Shown in -350 Chestnut finish on pages 55 and 84  
Shown in -351 Antique Linen finish on page 85



**350/351/352-950 Phoebe Lamp Table**  
Overall size 25-in. diameter x 26H in.  
1 shelf  
SOME ASSEMBLY REQUIRED  
Shown in -350 Chestnut finish on pages 55 and 65  
Shown in -351 Antique Linen finish on page 64  
Shown in -352 Driftwood finish on pages 50 and 64



**350/352-974 Halsey Bunching Chest**  
Overall size 39W x 18½D x 36½H in.  
2 doors; 2 drawers with drop-fronts to accommodate media components; 2 adjustable shelves; ventilated back; grommet for electrical cords  
Shown in -350 Chestnut finish on pages 82 and 83  
Shown in -352 Driftwood finish on pages 74, 75, 81, 94 and 95



**350/354-932 Colette Hutch**  
Overall size 47½W x 14½D x 44½H in.  
2 antique glass doors; 2 glass shelves; lighted interior  
The 354 Colette Hutch exterior is finished in Antique Linen with Driftwood finished interior  
Complements -933 Colette Secretary  
Shown in -354 Antique Linen with Driftwood finished interior on page 89



**350/354-933 Colette Secretary**  
Overall size 47½W x 21D x 42½H in.  
Upper section: Drop-down door creates writing surface; 4 drawers; 1 shelf; open storage compartments; 4 removable partitions  
Lower section:  
2 doors; 4 adjustable shelves  
The 354 Colette Secretary is finished in Antique Linen with Driftwood finished drawer compartment  
Accommodates -932 Colette Hutch  
Shown in -350 Chestnut finish on page 88  
Shown in -354 Antique Linen with Driftwood finished interior on pages 88 and 89



**352-902 Juliette Mirror**  
Overall frame size 38-in. diameter  
Hammered stainless steel accents  
Plate 28-in. diameter; 1 in. bevel  
Shown on pages 51, 53 and 85

**350/351-919 Merideth Hutch**  
Overall size 62W x 20D x 49½H in.  
2 shelves (lower shelf is removable)  
TV compartment with shelf removed  
51W x 13½D x 28H in.  
Complements -909 Merideth Console  
SOME ASSEMBLY REQUIRED  
Shown in -350 Chestnut finish on pages 44, 86 and 97  
Shown in -351 Antique Linen finish on pages 44 and 45

**350/351-909 Merideth Console**  
Overall size 59½W x 18½D x 35½H in.  
2 drawers with drop-fronts to accommodate media components; 1 shelf; ventilated back  
Accommodates -919 Merideth Hutch  
SOME ASSEMBLY REQUIRED  
Shown in -350 Chestnut finish on pages 44, 86, 87, and 97  
Shown in -351 Antique Linen finish on pages 44 and 45



## MEDIA ROOM



350/352-907  
**Andrews Entertainment Console**  
 Overall size 57½W x 18½D x 36½H in.  
 2 doors; 6 drawers (top 2 drawers with drop-fronts to accommodate media components);  
 3 adjustable shelves; ventilated back;  
 grommet for electrical cords  
 Shown in -350 Chestnut finish on page 99  
 Shown in -352 Driftwood finish on pages  
 95 and 96

## UPHOLSTERY



**7373-33-01 Sydney Slipcover Sofa**  
 Overall 93W x 40½D x 33½H in.  
 Arm 22½H in., Seat 18½H in.  
 Inside 80W x 21D in.  
 Standard Seat Cushion Ultra Down  
 Standard Back Tight  
 Standard Features Five 24" Lux Down Throw  
 Pillows, two 18" Lux Down Throw Pillows  
 Available Only as Shown - Shown in 4863-11  
 Gr. 3, three 24" Throw Pillows in 6062-11 Gr. 5  
 with Cord 795-11, two 24" Throw Pillows in  
 4863-11 Gr. 3 with Cord 795-11, two 18"  
 Throw Pillows in 5671-11 Gr. 4 with Cord 795-11  
 Shown on page 58



**7373-33-02 Sydney Slipcover Sofa**  
 Overall 93W x 40½D x 33½H in.  
 Arm 22½H in., Seat 18½H in.  
 Inside 80W x 21D in.  
 Standard Seat Cushion Ultra Down  
 Standard Back Tight  
 Standard Features Five 24" Lux Down Throw  
 Pillows, two 18" Lux Down Throw Pillows  
 Available Only as Shown - Shown in 4863-31  
 Gr. 3, three 24" Throw Pillows in 6016-11  
 Gr. 3 with Cord 755-71, two 24" Throw  
 Pillows in 4863-31 Gr. 3 with Cord 755-71,  
 two 18" Throw Pillows in 4832-11 Gr. 5 with  
 Cord 755-71  
 Shown on pages 56 and 61



**7373-11-01 Sydney Slipcover Chair**  
 Overall 37W x 40½D x 33½H in.  
 Arm 22½H in., Seat 18½H in.  
 Inside 24W x 23½D in.  
 Standard Seat Cushion Ultra Down  
 Standard Back Cushion Lux Down  
 Standard Feature One 24 x 14" Lux Down  
 Kidney Pillow  
 Available Only as Shown - Shown in 4863-11  
 Gr. 3, one 24 x 14" Kidney Pillow in 5671-11  
 Gr. 4 with Cord 795-11  
 Shown on pages 74 and 75

**7373-44-01 Sydney Slipcover Ottoman**  
 Overall 32W x 23D x 16½H in.  
 Standard Seat Cushion Ultra Down  
 Available Only as Shown - Shown in 4863-11 Gr. 3  
 Shown on pages 74 and 75



**7373-11-02 Sydney Slipcover Chair**  
 Overall 37W x 40½D x 33½H in.  
 Arm 22½H in., Seat 18½H in.  
 Inside 24W x 23½D in.  
 Standard Seat Cushion Ultra Down  
 Standard Back Cushion Lux Down  
 Standard Feature One 24 x 14" Lux Down  
 Kidney Pillow  
 Available Only as Shown - Shown in 4863-31  
 Gr. 3, one 24 x 14" Kidney Pillow in 4832-11  
 Gr. 5 with Cord 755-71  
 Shown on page 86

**7373-44-02 Sydney Slipcover Ottoman**  
 Overall 32W x 23D x 16½H in.  
 Standard Seat Cushion Ultra Down  
 Available Only as Shown - Shown in 4863-31 Gr. 3  
 Shown on page 86



**7373-52R-02 Sydney Slipcover  
 Right Arm Facing Love Seat**  
 Overall 71W x 40½D x 33½H in.  
 Arm 22½H in., Seat 18½H in.  
 Inside 64½W x 33½D in.  
 Standard Seat Cushion Ultra Down  
 Standard Back Tight  
 Standard Features Four 24" Lux Down Throw  
 Pillows, one 22" Lux Down Throw Pillow,  
 one 20" Lux Down Throw Pillow

**7373-51CR-02 Sydney Slipcover  
 Corner Chair**  
 Overall 39½W x 56D x 33½H in.  
 Seat 18½H in.  
 Inside 33½W x 33½D in.  
 Standard Seat Cushion Ultra Down  
 Standard Back Tight  
 Standard Features Three 24" Lux Down Throw  
 Pillows, one 22" Lux Down Throw Pillow

**7373-52L-02 Sydney Slipcover  
 Left Arm Facing Love Seat**  
 Overall 71W x 40½D x 33½H in.  
 Arm 22½H in., Seat 18½H in.  
 Inside 64½W x 33½D in.  
 Standard Seat Cushion Ultra Down  
 Standard Back Tight  
 Standard Features Four 24" Lux Down Throw  
 Pillows, one 22" Lux Down Throw Pillow,  
 one 20" Lux Down Throw Pillow

Available Only as Shown - Shown in 4863-31  
 Gr. 3, eleven 24" Throw Pillows in 4863-31 Gr.  
 3, three 22" Throw Pillows in 6016-11 Gr. 3  
 with Cord 755-71, two 20" Throw Pillows in  
 4832-11 Gr. 5 with Cord 755-71  
 Shown on pages 54, 55, 57, 64 and 65

Also Available  
 7373-52R-01 Sydney Slipcover Right Arm Facing  
 Love Seat (Linen)  
 7373-51CR-01 Sydney Slipcover Corner Chair  
 (Linen)  
 7373-52L-01 Sydney Slipcover Left Arm Facing  
 Love Seat (Linen)



**7859-33 Carley Sofa**  
 Overall 94W x 41D x 37H in.  
 Arm 22½H in., Seat 19H in.  
 Inside 79W x 26D in.  
 Standard Seat Cushion Ultra Down  
 Standard Back Cushion Blend Down  
 Standard Features Two 20" Lux Down Throw Pillows,  
 two 18" Lux Down Throw Pillows,  
 #9 Nailhead Trim, Casters - Pewter  
 Standard Finish Vintage  
 Shown in 4830-11 Gr. 3, two 20" Lux Down  
 Throw Pillows - One Side in 6028-11 Gr. 10 /  
 One Side in 4793-11 Gr. 3 with Welt 4793-11  
 Gr. 3, two 18" Throw Pillows in 6014-11 Gr. 4  
 with Welt 4793-11 Gr. 3, #9 Nailhead Trim,  
 Casters - Pewter, finish Vintage  
 Shown on pages 67, 69, 72, 98 and 99



Shown in 5643-11 Gr. 3, two 20" Throw Pillows in  
 4837-71 Gr.4 with Welt 4830-11 Gr. 3, two 18"  
 Throw Pillows - One Side in 6027-71 Gr. 10 /  
 One Side in 4830-11 Gr. 3 with Welt 4830-11  
 Gr. 3, #9 Nailhead Trim, Casters - Pewter,  
 finish Vintage  
 Shown on pages 50, 51 and 52



**1541-11 Abbey Chair**  
 Overall 37½W x 36D x 38H in.  
 Arm 26H in., Seat 19H in.  
 Inside 21½W x 22½D in.  
 Standard Seat Cushion Ultra Down  
 Standard Back Tight  
 Standard Finish Vintage  
 Shown in 6022-71 Gr. 10, Contrast Body Welt in  
 4830-11 Gr. 3, finish Driftwood  
 Shown on pages 51, 52, 53 and 62



Shown in 6015-11 Gr. 3, Contrast Body Welt in  
 4831-11 Gr. 3, finish Driftwood  
 Shown on pages 59 and 71



Shown in 6014-11 Gr. 4, Contrast Body Welt in  
 4830-11 Gr. 3, finish Antique Linen  
 Shown on pages 66, 69 and 76



**1545-11 Isabella Chair**  
 Overall 31½W x 36D x 39½H in.  
 Arm 25H in., Seat 19H in.  
 Inside 21W x 22D in.  
 Standard Seat Cushion Ultra Down  
 Standard Back Tight  
 Standard Feature One 20" Lux Down Throw Pillow  
 Standard Finish Vintage  
 Shown in 6028-11 Gr. 10, Contrast Welt on Seat  
 Cushion in 4793-11 Gr. 3, one 20" Throw Pillow  
 in 6028-11 Gr. 10 with Welt 4793-11 Gr. 3,  
 finish Antique Linen  
 Shown on pages 7, 16, 68 and 78

**1545-44 Isabella Ottoman**  
 Overall 28½W x 21D x 19H in.  
 Standard Seat Cushion Ultra Down  
 Standard Finish Vintage  
 Shown in 6028-11 Gr. 10, Contrast Welt on Seat  
 Cushion in 4793-11 Gr. 3, finish Antique Linen  
 Shown on pages 7 and 68



Shown in 6013-11 Gr. 5, Contrast Welt on Seat  
 Cushion in 4830-11 Gr. 3, one 20" Throw  
 Pillow in 6013-11 Gr. 5 with Welt 4830-11  
 Gr. 3, finish Vintage  
 Shown on pages 62 and 92



**1592-11 Julianna Chair**  
 Overall 30½W x 33½D x 39H in.  
 Arm 25H in., Seat 18½H in.  
 Inside 20½W x 21½D in.  
 Standard Seat Cushion Ultra Down  
 Standard Back Tight  
 Standard Feature #7 Nailhead Trim  
 Standard Finish Vintage  
 Shown in 6013-11 Gr. 5, Contrast Welt on Seat  
 Cushion in 4830-11 Gr. 3, #7 Nailhead Trim,  
 finish Antique Linen  
 Shown on pages 12, 22 and 80



Shown in 4860-11 Gr. 4, #7 Nailhead Trim,  
 finish Antique Linen  
 Shown on page 81



**7532-11 Mallory Chair**  
 Overall 37W x 36D x 35½H in.  
 Arm 28H in., Seat 16½H in.  
 Inside 19W x 22½D in.  
 Standard Seat Tight  
 Standard Back Tufted  
 Standard Features #7 Nailhead Trim, Casters  
 Standard Finish Vintage  
 Shown in 4619-11 Gr. 4, #7 Nailhead Trim,  
 Casters - Pewter, finish Vintage  
 Shown on pages 76 and 77



Shown in 4860-11 Gr. 4, #7 Nailhead Trim,  
 Casters - Pewter, finish Antique Linen  
 Shown on pages 76, 84 and 95



**7515-44 Jasmine Ottoman**  
 Overall 35W x 35D x 21H in.  
 Standard Seat Tight  
 Standard Feature Casters  
 Shown in 5642-11 Gr. 3  
 (shown horizontal stripe - fabric standard  
 as vertical stripe), Contrast Skirt Block in  
 4830-11 Gr. 3  
 Shown on pages 67 and 69



**1536-11 Nicholas Chair**  
 Overall 28½W x 27D x 38½H in.  
 Arm 26H in., Seat 17½H in.  
 Inside 20W x 20D in.  
 Standard Seat Tufted  
 Standard Feature #1 Nailhead Trim  
 Standard Finish Heritage  
 Shown in 4830-11 Gr. 3, #7 Nailhead Trim,  
 finish Antique Linen  
 Shown on page 88

Also Available  
 LL1536-11 Nicholas Leather Chair



CARING FOR YOUR  
LEXINGTON HOME BRANDS  
FURNITURE

WOOD

- Avoid prolonged exposure to direct sunlight.
- Do not leave plastic or rubber materials on wood surfaces.
- Wipe up spills immediately.
- Clean with a reliable non-silicone furniture polish. Always rub with the grain.
- Avoid common hazards such as hot dishes (use a protective pad), harsh solvents (nail polish remover, alcohol), and abrasives.

ANTIQUED BRASS AND METAL

- Maintain with regular dusting.
- Wipe up spills immediately.
- Clean with mild soap and water, dry thoroughly. Do not use a brass cleaner (it will damage the lacquer)

UPHOLSTERY

See the Lexington Upholstery and Leather Catalog for more information on cleaning and care for your product. Available from your retailer, by visiting [lexington.com](http://lexington.com) or by phoning 336.474.5300, ext. 2. For current fabric information, see your Lexington Upholstery dealer.

**CAUTION:** Never remove cushion covers for separate dry-cleaning or washing, even though they do have zippers. Do not use bleach or any tumble method cleaning service as this may destroy the backing of the fabric or shrink or otherwise damage the upholstery fabric.

**NOTE TO FURNITURE RETAILER:** Possession of this catalog does not necessarily constitute authority to purchase and the furnishing of this catalog does not constitute an offer by the Company to sell any of the items contained herein. Lexington Home Brands (LHB) reserves the right to alter specifications or discontinue items at any time without advance notice. All price lists and catalogs remain the property of LHB, and may not be copied or in any way duplicated without the express written consent of LHB, and must be returned, or made available, without cost, to LHB promptly should the relationship be terminated by either party. Failure to observe this restriction may result in the termination of LHB's relationship with the dealer, legal action or both.

**CONSTRUCTION NOTE:** In order to provide our customers with the best possible quality and/or value, this collection includes items or components produced outside the United States. All Lexington furniture is produced to Lexington design and material specifications and crafted to meet the highest quality standards.

VIEW THE TWILIGHT BAY VIDEO  
ON YOUR iPHONE  
OR OTHER 3G SMARTPHONE

To experience the video on your mobile device, download and install the free Tag Reader application at [www.gettag.mobi](http://www.gettag.mobi)



Once the app is installed and launched, simply aim your smart phone camera at the box above and snap it to access the video.



LEXINGTON  
HOME BRANDS  
[lexington.com](http://lexington.com)  
[facebook.com/lexington](https://facebook.com/lexington)  
[youtube.com/lexingtonfurniture](https://youtube.com/lexingtonfurniture)

Copyright ©2010LHB WCP-6M-9/10



# Twilight Bay



To purchase a Twilight Bay catalog or locate a retailer in your area,  
visit [lexington.com](http://lexington.com), or call 336-474-5300 ext 2.

LEXINGTON  
HOME BRANDS

[lexington.com](http://lexington.com)