



VESTIGE

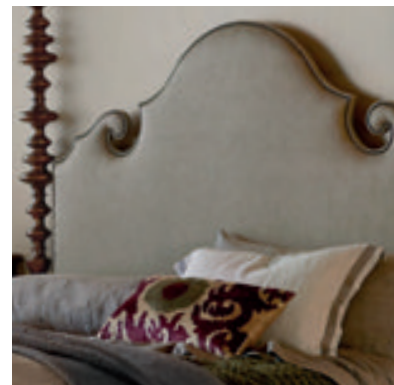
B E R N H A R D T



VESTIGE

B E R N H A R D T

Sometimes, even when you're thinking outside the box, a return to the classics is a great starting point. This is certainly the case when it comes to home furnishings. By reinventing traditional pieces and making them relevant for today, Vestige by Bernhardt brings European stylings of years past back into the spotlight with the aim of inspiring truly refined interiors. Considered a modern European collection inspired by Spanish, French, Portuguese and Italian designs, clean lines are coupled with classic elements to create an eclectic style. Delicate carvings on mahogany veneers accompany two unique finishes, Allspice and Concrete, both of which work effortlessly with the Antique Iron hardware. These elements combine to create pieces that feel “found.” For a unique look that gives a nod to history while remaining refreshingly modern, Vestige by Bernhardt fits the bill and allows for a sophistication that remains genuinely comfortable, too.





CURATED

Offering infinite possible pairings, Vestige allows for rooms to be completely transformed or subtly shifted. Either way, you're afforded a flexibility that is invaluable, along with a style that is timeless.



SHOWN:

345-224 Dining Table

345-565 Upholstered Side Chairs

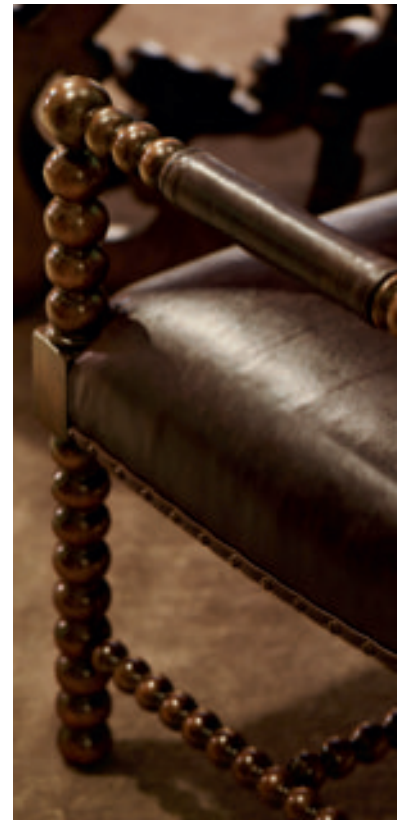
345-566 Upholstered Arm Chair

345-134 Buffet

345-358 Curio

REFINED

Influenced by European furniture design, pieces exhibit Old World charm that fit today's aesthetic. Bold, rich finishes complement the meticulous craftsmanship for which Bernhardt is respected.



SHOWN:

345-274/273 Round Dining Table

345-542 Upholstered Arm Chair

345-356 Display Curio





SHOWN:

345-860 Entertainment Console

345-013 Oval Cocktail Table

345-122 End Table

345-358 Curio

N7067 Cory Sofa

N1808L Delano Chair

DISTINCTIVE

For a living space to make a personal statement, unique pieces are a must. A perfect example is our leather-wrapped case, which features a scrolling nailhead pattern on the top edge, door fronts, and end panels.







SHOWN:

345-131 Sideboard

345-331 Mirror

345-021 Cocktail Table

345-356 Display Curio

345-127 Night Table

345-125 Round Chairside Table

N1808L Delano Chair

N2097 Albion Sofa

N3003 Selby Chair

ECLECTIC

The Vestige collection's vintage appeal creates endless opportunities for mixing and matching. A diverse mix of materials that includes aged leather, antiqued iron, and exclusive fabrics allows you to create a look all your own.



DRAMATIC

When clean lines fuse effortlessly with traditional furniture shapes, a memorable living space is almost always the result. Luxurious fabrics, striking silhouettes, and rich finishes come together to create a look that feels opulent, but remains comfortable.



SHOWN:
345-H59/F59/R59 Upholstered Poster Bed
345-115C Hall Chest
345-119 Tall Chest
345-774 Center Table
345-229 Nightstand
B5212 Wentworth Chair





SOPHISTICATED

An upholstered headboard with nailhead trim can serve as the centerpiece of any bedroom, while planking, overlays, and moldings on additional pieces evoke classic Moorish, Italian, and French styles. The combination is truly urbane.



SHOWN:

345-H09/F09/R09 Panel Bed
345-229 Nightstand
345-230 Nightstand
345-052 Dresser
345-508 Bench



INDEX



345-224 DINING TABLE

W 80 (100-120) | D 48 | H 30 in.
W 203.20 (254-304.80) | D 121.92 | H 76.20 cm.

Thick Flat Cut Mahogany veneers. Two 20” leaves. Base has turned legs posts and stretchers. Adjustable glides. Allspice finish.
pages Cover, 2



345-274 ROUND DINING TABLE TOP
345-273 DINING TABLE BASE

Overall Diameter: 60 | H 30 in.
Overall Diameter: 152.40 | H 76.20 cm.

Thick Flat Cut Mahogany veneers. Decoratively shaped base. Recessed adjustable glides.
Allspice finish.
page 5



345-541 UPHOLSTERED SIDE CHAIR

W 22 | D 26 | H 38 in.
W 55.88 | D 66.04 | H 96.52 cm.

Seat Height: 19 in. | 48.26 cm.
Seat Depth: 19-1/2 in. | 49.53 cm.
Upholstered seat, inback and outback in standard leather with tape and nailhead trim. No leather option. Spindle-styled exposed wood. Stretchers. Allspice finish.
Also available in other fabrics and/or nailhead; order as 345-X41.



345-542 UPHOLSTERED ARM CHAIR

W 24 | D 24-5/8 | H 38 in.
W 60.96 | D 62.55 | H 96.52 cm.

Arm Height: 25-1/4 in. | 64.14 cm.
Seat Height: 19 in. | 48.26 cm.
Seat Depth: 19-1/4 in. | 48.90 cm.
Upholstered seat, inback and outback in standard leather with tape and nailhead trim. Upholstered arm pad. No leather option. Spindle-styled exposed wood. Stretchers. Allspice finish.
Also available in other fabrics and/or nailhead; order as 345-X42.
pages 4, 5



345-565 UPHOLSTERED SIDE CHAIR

W 22-1/8 | D 26-5/8 | H 42-5/8 in.
W 56.20 | D 67.63 | H 108.27 cm.

Seat Height: 19 in. | 48.26 cm.
Seat Depth: 19-1/8 in. | 48.58 cm.
Assigned fabric: B921
Upholstered seat, inback and outback with spaced large nailhead trim. No leather option. Decorative stretchers. Allspice finish.
Also available in other fabrics and/or nailhead; order as 345-X65.
pages Cover, 2



345-566 UPHOLSTERED ARM CHAIR

W 23-1/2 | D 27-1/8 | H 44-5/8 in.
W 59.69 | D 68.90 | H 113.35 cm.

Arm Height: 24-1/2 in. | 62.23 cm.
Seat Height: 19 in. | 48.26 cm.
Seat Depth: 19-1/8 in. | 48.58 cm.
Assigned fabric: B921
Upholstered seat, inback and outback with spaced large nailhead trim. No leather option. Decorative stretchers. Allspice finish.
Also available in other fabrics and/or nailhead; order as 345-X66.
pages Cover, 3



345-131 SIDEBOARD

W 68 | D 20-1/2 | H 32 in.
W 172.72 | D 52.07 | H 81.28 cm.

Thick Flat Cut Mahogany veneers. Two drawers with decorataive carved drawer fronts. Left drawer has wrapped pad. Right drawer has silverware insert. Decorative carving on end panels. One shelf. Center support foot. Adjustable glides. Anti-tip kit. Allspice finish.
pages 8, 9



345-356 DISPLAY CURIO

W 58 | D 22-3/4 | H 84 in.
W 147.32 | D 57.79 | H 213.36 cm.

Thick Flat Cut Mahogany veneers. Two wood-framed doors with Antique Iron finish metal grille and lightly seeded glass. Behind doors are three adjustable/removable wood shelves and one fixed shelf. Base is weighted to prevent tipping. Adjustable glides. Anti-tip kit. Allspice finish.
pages 4, 5, 8



345-134 BUFFET

W 76-7/8 | D 21-7/16 | H 39 in.
W 195.26 | D 54.45 | H 99.06 cm.

Thick Flat Cut Mahogany veneers. Two drawers. Left drawer has wrapped pad. Right drawer has silverware insert. Two sets of doors. Behind each set of doors is one adjustable/removable shelf. Adjustable glides. Anti-tip kit. Allspice finish.
pages 2, 3



345-358 CURIO

W 48-1/4 | D 19-7/8 | H 90 in.
W 122.56 | D 50.48 | H 228.60 cm.

Thick Flat Cut Mahogany veneers. Two wood-framed doors with inset seeded glass panels. Behind doors are three adjustable/removable wood shelves and one fixed wood shelf. Base is weighted to prevent tipping. Interior adjustable glides. Anti-tip kit. Allspice finish.
pages Cover, 3, 6



345-H59/F59/R59
UPHOLSTERED POSTER BED 6/6 (KING)

Overall: W 83-7/8 | D 90-1/8 | H 86 in. (71 in. low post)
Overall: W 213.04 | D 228.92 | H 218.44 cm. (180.34 cm. low post)

Slat Height: 10-3/4 in. | 27.31 cm.
Assigned fabric: B921
Upholstered headboard with nailhead trim. Three slat support system with adjustable center supports. No leather option. Turned posts. Allspice finish.
Headboard and footboard posts can be converted to lower post option. Also available in other fabrics and/or nailhead; order as 345-XH59/F59/R59. pages 1, 10, 11, 14, 15

Also Available:
345-H57/F57/R57
UPHOLSTERED POSTER BED 5/0 (QUEEN)
Overall: W 67-7/8 | D 90-1/8 | H 86 in. (70 in. low post)
Overall: W 172.40 | D 228.92 | H 218.44 cm. (177.80 cm. low post)
Headboard and footboard posts can be converted to lower post option. Also available in other fabrics and/or nailhead; order as 345-XH57/F57/R57.

345-H58/F58/R58
UPHOLSTERED POSTER BED 6/0 (CALIFORNIA KING)
Overall: W 79-7/8 | D 94-1/8 | H 86 in. (70 in. low post)
Overall: W 202.88 | D 239.08 | H 218.44 cm. (177.80 cm. low post)
Headboard and footboard posts can be converted to lower post option. Also available in other fabrics and/or nailhead; order as 345-XH58/F58/R58.



345-H09/F09/R09 PANEL BED 6/6 (KING)

Overall: W 80-1/8 | D 90 | H 66 in.
Overall: W 203.52 | D 228.60 | H 167.64 cm.

Slat Height: 10-3/4 in. | 27.31 cm.
Assigned fabric: B916
Headboard has upholstered inset panel with tape and nailhead trim. Footboard has corner brackets and center foot. Use of corner brackets is optional. Three slat support system with adjustable center supports. No leather option. Allspice finish.
Also available in other fabrics and/or nailhead; order as 345-XH09/XF09/R09. page 12

Also Available:
345-H07/F07/R07 PANEL BED 5/0 (QUEEN)
Overall: W 64-1/8 | D 90 | H 66 in.
Overall: W 162.88 | D 228.60 | H 167.64 cm.
Also available in other fabrics and/or nailhead; order as 345-XH07/XF07/R07.



345-051 DRESSER

W 68 | D 20 | H 37-1/2 in.
W 172.72 | D 50.80 | H 95.25 cm.

Thick Flat Cut Mahogany veneers. Six drawers. Adjustable glides. Anti-tip kit. Allspice finish.



345-052 DRESSER

W 70 | D 20 | H 36-1/2 in.
W 177.80 | D 50.80 | H 92.71 cm.

Thick Flat Cut Mahogany veneers. Nine drawers. Two back support legs. Adjustable glides. Anti-tip kit. Allspice finish.
page 13



345-032 MEDIA CHEST

W 50 | D 19 | H 32-1/2 in.
W 127 | D 48.26 | H 82.55 cm.

Thick Flat Cut Mahogany veneers. Three drawers. Center support leg. Adjustable glides. Anti-tip kit. Allspice finish.



345-115C HALL CHEST

W 42-3/4 | D 19-5/8 | H 32 in.
W 108.59 | D 49.85 | H 81.28 cm.

Maple veneers. Two drawers. Adjustable glides. Anti-tip kit.
Concrete finish.
pages 10, 11, 15, Inside Back Cover



345-230 NIGHTSTAND

W 38-3/4 | D 19-3/8 | H 32 in.
W 98.43 | D 49.21 | H 81.28 cm.

Thick Flat Cut Mahogany veneers. Three drawers with decorative molding on drawer fronts. Adjustable glides. Anti-tip kit.
Allspice finish.
page 13



345-229 NIGHTSTAND

W 38 | D 19 | H 32 in.
W 96.52 | D 48.26 | H 81.28 cm.

Thick Flat Cut Mahogany veneers. Three drawers. Adjustable glides.
Anti-tip kit. Allspice finish.
page 11, 12, 15



345-119 TALL CHEST

W 39-7/8 | D 19 | H 62-1/2 in.
W 101.28 | D 48.26 | H 158.75 cm.

Thick Flat Cut Mahogany veneers. Six drawers. Two drawer façade on second and third drawers. Turned leg posts and stretchers. Adjustable glides. Anti-tip kit. Allspice finish.
pages Inside Front Cover, 10, 14



345-013 OVAL COCKTAIL TABLE

W 56 | D 34 | H 20 in.
W 142.24 | D 86.36 | H 50.80 cm.

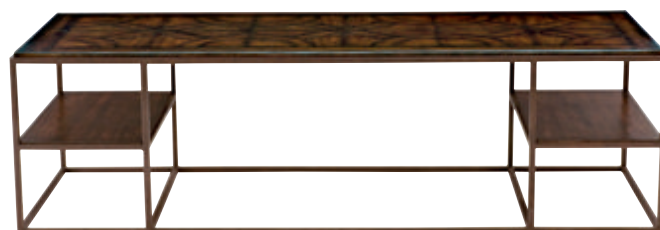
Thick Flat Cut Mahogany veneers. Spindle-style leg posts. Adjustable glides. Stretchers. Allspice finish.
page 6



345-021 COCKTAIL TABLE

W 66 | D 26 | H 19 in.
W 167.64 | D 66.04 | H 48.26 cm.

Fancy face patterned wood top of Solid Mahogany. Metal base with one wood shelf on each end. Adjustable glides. Antique Iron finish on base. Allspice finish on top.
page 8



345-774 CENTER TABLE

Diameter 42 | H 30 in.
Diameter 106.68 | H 76.20 cm.

Fancy face patterned wood top of Solid Mahogany.
Four leg base. Adjustable glides. Concrete finish
on base. Allspice finish on top.
pages 10, 14



345-125 ROUND CHAIRSIDE TABLE

Diameter 28 | H 28 in.
Diameter 71.12 | H 71.12 cm.

Thick Flat Cut Mahogany veneers. Adjustable glides. Stretchers.
Allspice finish.
page 9



345-111 SQUARE END TABLE

W 24 | D 24 | H 24 in.
W 60.96 | D 60.96 | H 60.96 cm.

Fancy face patterned wood top of Solid Mahogany. Metal base
with one wood shelf. Adjustable glides. Antique Iron finish on base.
Allspice finish on top.



345-122 END TABLE

W 30 | D 22-7/8 | H 27 in.
W 76.20 | D 58.10 | H 68.58 cm.

Thick Flat Cut Mahogany veneer wood top. Antique Iron finish on base. Allspice finish on top.

page 6



345-127 NIGHT TABLE

W 30 | D 19 | H 30 in.
W 76.20 | D 48.26 | H 76.20 cm.

Thick Flat Cut Mahogany veneers. Two shelves. Allspice finish.

page 8



345-507 BENCH

W 24 | D 18-1/4 | H 20 in.
W 60.96 | D 46.36 | H 50.80 cm.

Loose upholstered box cushion in crocodile patterned leather with top and bottom welt, and velcro strips for attaching cushion to base. No fabric or leather options. Slatted top “X shaped base. Stretchers. Allspice finish.



345-508 BENCH

W 56 | D 18 | H 20 in.
W 142.24 | D 45.72 | H 50.80 cm.

Assigned fabric: B866
Upholstered box seat with top and bottom welt. No leather option.
Metal frame with stretchers. Adjustable glides. Antique Iron finish on frame.
Also available in other fabrics; order as 345-X08.
pages 12, 13



345-331 MIRROR

W 58 | D 1-1/4 | H 36 in.
W 147.32 | D 3.18 | H 91.44 cm.

Wood-framed mirror with non-beveled mirror glass. Can be hung vertically or horizontally. Allspice finish.
page 8



345-918 ENTERTAINMENT CONSOLE

W 70 | D 22 | H 34 in.
W 177.80 | D 55.88 | H 86.36 cm.

Thick Flat Cut Mahogany veneers. Two drawers. Two shelves.
Adjustable glides. Anti-tip kit. Allspice finish.



345-860 ENTERTAINMENT CONSOLE

W 66-1/8 | D 21-1/8 | H 32-1/8 in.

W 167.96 | D 53.66 | H 81.66 cm.

TV Area: W 65-7/8 | D 21 in.

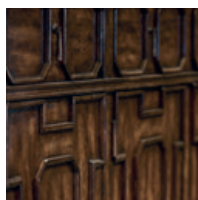
TV Area: W 167.32 | D 53.34 cm.

Thick Flat Cut Mahogany veneers. Leather wrapped case with decorative nailhead pattern on top edge, door fronts and end panels. Three doors with touch latches. Behind each end door are two compartments, each with a covered grommet hole and ventilation hole in back panel. Between open compartments is one drawer with hand cut-out. Ventilation holes in bottom panel. Behind center door are two adjustable/removable, vented shelves. Vents and grommet grommet hole with cover in back panel. Metal base with adjustable glides. Anti-tip kit. Allspice finish on interior. Antique Iron finish on base.

pages 6, 7



SIGNATURE ELEMENTS



INSPIRATION

Influenced by the belief that the best furniture traditions are still applicable for today's living spaces, Vestige is a modern European collection with classic design elements from Spain, Portugal, France and Italy.



ARTISTRY

Subtle curves, scalloping and intricate carvings, blend seamlessly with clean-lined geometry. Additional planking, overlays and moldings evoke classic European styles. The end result is a collection of refined silhouettes.



ACCENTS

A wide range of materials ties together this eclectic collection, including exclusive fabrics, nail head trim and aged leather. Additional details as seen in antiqued iron, seeded glass and beveled mirrors add the finishing touches.



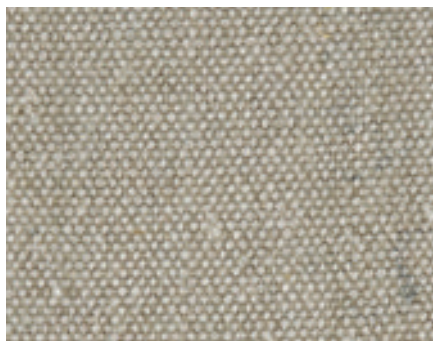
HARDWARE

Ring pulls, back plates, keys and knobs are created from cast iron and come in a blackened Antique Iron finish. The details and craftsmanship in these pieces add to the vintage appeal of this collection.

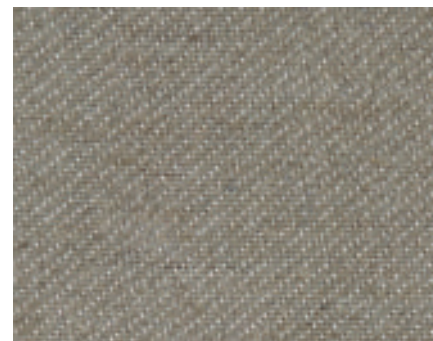
FABRICS



B866



B916



B921

UPHOLSTERY FABRICS FEATURED

B5212 Wentworth Chair
Fabric No. 2094-033
page 10, 14

N1808L Delano Chair
Leather No. 261-002
page 8

N3003 Selby Chair
Fabric No. 2532-021
page 9

N1808L Delano Chair
Leather No. 261-022
pages 6, 7

N2097 Albion Sofa
Fabric No. 1722-020
pages 8, 9

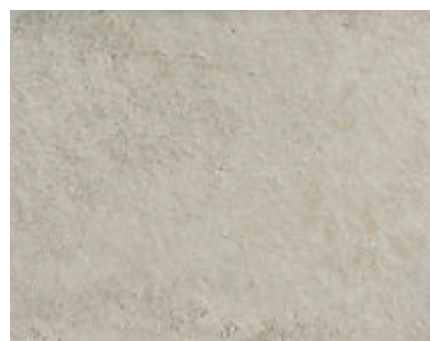
N7067 Cory Sofa
Fabric No. 1741-002
page 6

WOOD & FINISHES

Allspice, a rustic distressed brown color, is the primary finish on plantation-grown mahogany veneers. A complementary Concrete finish comes in an aged ivory color and adds textural interest to the collection.



Allspice



Concrete

COVER IMAGES FEATURED

COVER: 345-224 Dining Table, 345-565 Upholstered Side Chair, 345-566 Upholstered Arm Chair, 345-358 Curio

INSIDE FRONT COVER: 345-119 Tall Chest

INDEX LEAD IN: 345-H59/F59/R59 Upholstered Poster Bed, 345-115C Hall Chest, 345-229 Nightstand, 345-119 Tall Chest, 345-774 Center Table, B5212 Wentworth Chair

INSIDE BACK COVER: 345-115C Hall Chest



Many high quality, natural materials, such as wood, veneer, glass, rubber, metal, plastic, cloth and/or stone, are used in our products and may reflect grain, vein or color variations. These variations are inherent in their species and enhance the unique beauty of each piece of furniture. Due to the photographic and printing processes used in the creation of this catalog, the finish and fabric colors displayed may vary from actual finish and fabric colors. Authorized Bernhardt retailers carry a variety of our furniture pieces and collections, so please contact them about the specific products at their location. Bernhardt uses materials and resources sourced globally to ensure a quality product. Specifications subject to change without notice. Copyright © 2013 Bernhardt Furniture Company. Printed in the USA 09/2013 HA 4.5K.



