

2012 Built-In Refrigeration

Seems like seamless is in.



Bosch Home Appliances

1901 Main Street
Irvine, CA 92614
1.800.944.2904

www.bosch-home.com/us



BOSCH
Invented for life



BOSCH
Invented for life



© 2012 BSH Home Appliances Corporation.



European aesthetics, German perfectionism

Bosch takes pride in our ability to overcome technological obstacles. We face these daunting challenges so we can produce world-class, intuitive machines that use fewer resources. And that’s why we’ll never be afraid of the work it takes to engineer the world’s best machines.

Every appliance we build is embedded with the Bosch spirit. A spirit birthed by engineering and design created specifically for your life.

Table of contents	Features	2
	New for 2012	6
	Specifications	8
	Installation	9

Features

- Simplified, minimalistic design
- Food preservation
- Optimized storage space
- Energy efficiency

Bosch has left nothing for discussion. You will receive premium appliances that demonstrate the ideals that Bosch has strived toward for over a century. Design and efficiency are staples of the brand and lead to lowering food and electricity costs while delivering a beautiful refrigerator for your home.

European Design

Flexible exterior look

We’ve redefined seamless in your kitchen. Bosch refrigerators can be installed flush with your cabinetry, becoming a sleek integration in your kitchen, or framed with a stylish, semi-flush design. Bosch has made it easier than ever to ensure that your kitchen looks exactly as you’ve planned it.

All-level LED sidewall lighting

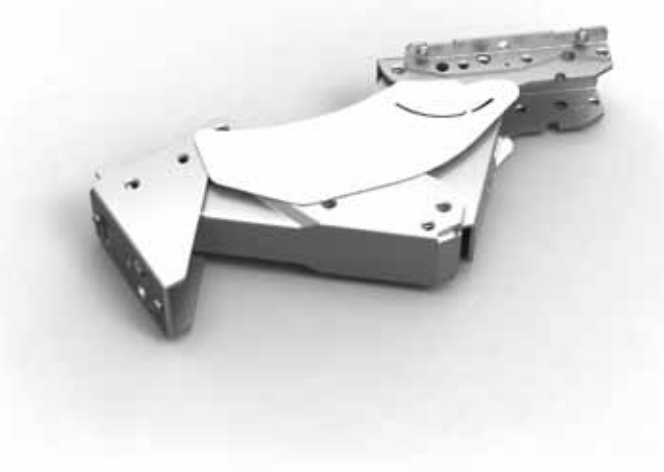
The days of reaching into a dark refrigerator are over. Brilliantly designed LED lights are placed up front, so you’ll never again block the bulb in the back of the refrigerator with that club-store-sized block of cheese. Long-lasting LED sidewall lighting is just another innovative attribute brought to you by Bosch. These theater-style lights eliminate dark areas throughout the refrigerator, so nothing is forgotten.

Heavy-duty Optiflex® hinge

These specially designed hinges allow the refrigerator doors to line up flush with your custom-installed or existing cabinetry when closed, yet pull out and away from the cabinetry when opened to protect the surrounding surfaces from damage.

Frameless, ultra-clear shelves

Cleaning shelves in your last refrigerator was a struggle due to crumbs getting stuck in the space between the shelf and its frame, but you won’t have to worry about that anymore with Bosch’s frameless shelves. You’ll be able to utilize the entire surface area of the shelf, and keeping them brilliantly clean is a breeze. These shelves are perfect for large dishes or party platters.



German Engineering

Engineered to last as long as your kitchen

Bosch brings you quality products that are built to last. Every Bosch refrigerator is German-engineered for long-lasting durability, and because their classic design will be as handsome tomorrow as it is today, you won't have to replace your appliances every time you update the rest of your kitchen.

Cyclopentane-based insulation

Bosch refrigerators are insulated with the environmentally friendly cyclopentane in their polyurethane foam. This replaces chemicals like CFC-11 and HCFC-141b, which release ozone-depleting chemicals into the environment.

Authentic materials

Bosch strives to use natural materials such as glass, wood and metal instead of cheap, polluting plastics. Plastics use a lot of natural resources and energy to produce and break down slowly, adding to long-lasting pollution.



Features

Food preservation

Air filtration

Most foods wilt because of bacteria, so it’s very important that your refrigerator filters its interior air properly. Bosch refrigerators constantly filter the air for bacteria that cause your food to go bad more quickly than it should. With Bosch, efficiency doesn’t stop at the power source.

Deli and meatkeeper

The deli and meatkeeper in your Bosch fridge help keep food fresh longer while optimizing storage space for meat, fish and deli products. For us, technology is just the beginning. We ensure that all of our products optimize their potential, so you get more for your money.

Dual evaporator and dual compressor

We took an extra step when producing these Bosch refrigerators. Innovative Bosch technology that has separate compressors and evaporators for the refrigerator and freezer sections prevent the transfer of odors and provide improved humidity levels for better food preservation.

SuperCool™ and SuperFreeze™

These features quickly balance temperatures between the chilled and frozen items already in your refrigerator and the new items that you introduce. This helps keep food fresh, and flavor in, so when you’re ready to prepare a meal you’ll be preparing the best meal possible.



DID YOU KNOW?

- The all-new 30" built-in by Bosch is the most energy-efficient refrigerator in its class.*

Energy Efficiency

ENERGY STAR® qualified

Every Bosch refrigerator is ENERGY STAR qualified. With efficient features, such as an alarm indicating the door is ajar, Vacation Mode and Economy Mode, Bosch can significantly reduce your energy bills.

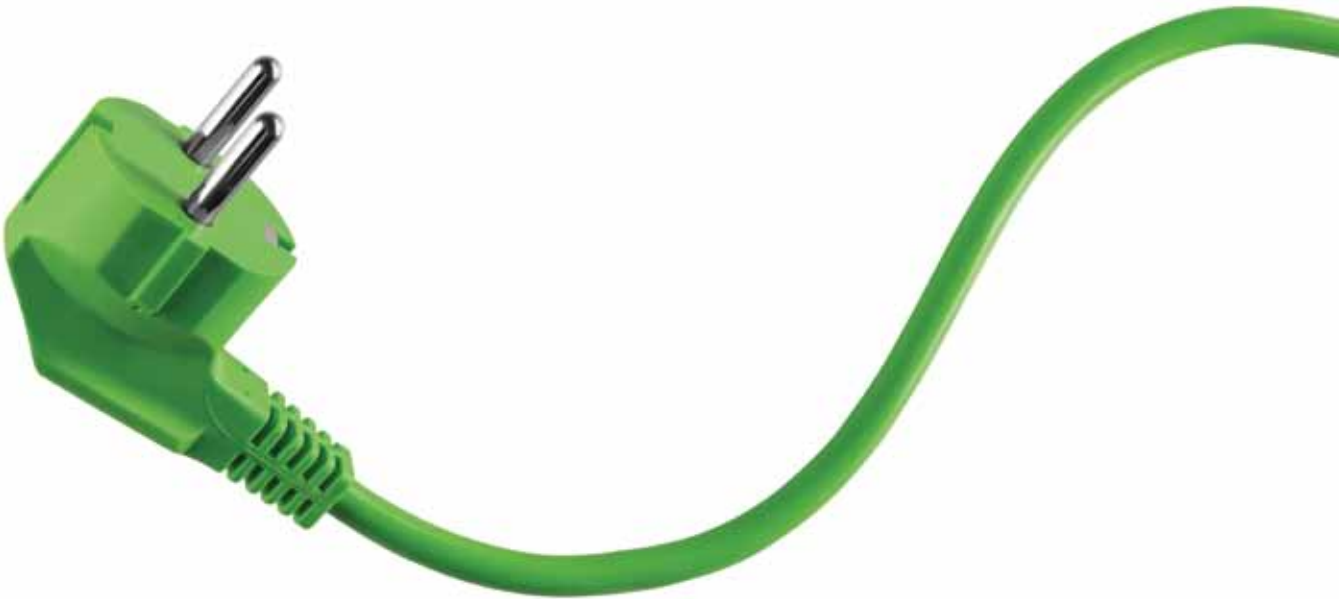


Most energy-efficient

The 30" Bosch built-in bottom freezer is the most energy-efficient in its class.* It is certified CEE Tier 2—an important recognition for brands dedicated to efficiency and high-value offerings.

LED

Light-emitting diodes are environmentally friendly lighting that use 50 to 90 percent less energy, are more brilliant and longer lasting than a typical bulb. On top of the benefits of saving energy, they’re even placed in a more strategic place in your refrigerator, so the benefits keep adding up.



*Based on a comparison of built-in bottom freezers with a 30" width (or larger) listed on energystar.gov, December 2012.

What's new for 2012?

Unmatched European aesthetics

Simplified features

German engineering



**30" Bottom Freezer
Stainless Steel**



**36" French Door
Stainless Steel**

DID YOU KNOW?

- Bosch refrigerators give you the flexibility to create a fully flush installation with your 25" cabinetry or a framed installation for a classic semi-flush appearance that works with standard cabinetry.

Full-length rack system

Bosch optimizes the space in each of its refrigerators, making it easy to store and stock food. The full-length rack system is totally intuitive, so you can customize the space and functionality of your refrigerator.

Height-adjustable door bins

The bins in the door are not only large, but they're as versatile as the rest of the refrigerator. They can be moved up or down to create the necessary space for larger items. It's as customizable a refrigerator as you'll find.

Full-width glass shelves

More than just beautiful, the full-width glass shelves are extremely functional. They are easily removable to make room for large platters or that prize-winning watermelon.

Gallon door bins

Now you can save more space on your shelves by storing large, gallon-sized beverages right in the door. The oversized door bins are a great way to keep these large items within easy reach, and give your fridge even more versatility. Our aim is to help de-clutter your refrigerator.

Full-extension drawers

We're making it easier to utilize the entire space in your refrigerator drawer. We've allowed the doors of the refrigerator to open at a full 90° allowing the drawers to fully extend out of your refrigerator so you can reach everything placed throughout the drawer.



Specifications

Built-in French Door Refrigeration Specifications

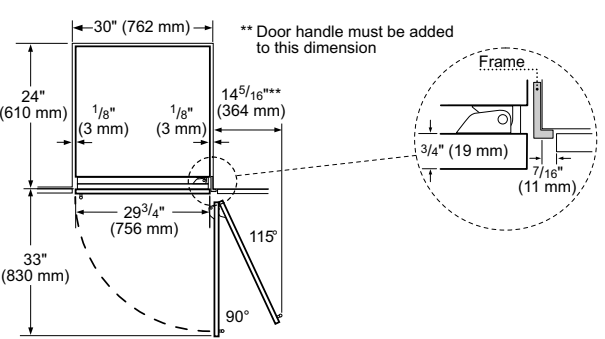
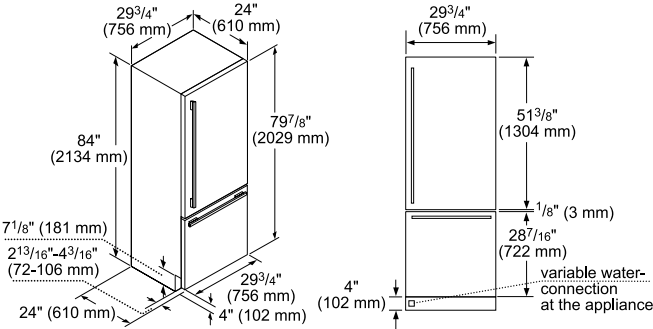


	800 Series 30" Built-in Bottom Freezer	800 Series 36" Built-in French Door Bottom Freezer
Model Numbers	B30BB830SS Stainless Steel	B36BT830NS Stainless Steel
Appearance	Full height door—true cabinet integration without exposed venting grille	Full height door—true cabinet integration without exposed venting grille
	Optiflex® hinge—opens out and away from cabinetry up to 115° door opening angle	Optiflex® hinge—opens out and away from cabinetry up to 115° door opening angle
	Frame kit for flush installation (25"-inch-deep cutouts) or framed installation (24"-inch-deep cutouts), preassembled	Frame kit for flush installation (25"-inch-deep cutouts) or framed installation (24"-inch-deep cutouts), preassembled
Performance	Dual refrigeration system with two compressors and two evaporators for best humidity/temperature and no odor transfer	Dual refrigeration system with two compressors and two evaporators for best humidity/temperature and no odor transfer
	Electronic Sensor Controls—keep temperatures consistent so food stays fresh no matter where it is stored	Electronic Sensor Controls—keep temperatures consistent so food stays fresh no matter where it is stored
	Full width meat drawer	Full width meat drawer
	Carbon air filter reduces odors and keeps air clean and fresh	Carbon air filter reduces odors and keeps air clean and fresh
	Humidity-controlled crispers	Humidity-controlled crispers
	Filtered ice-maker	Filtered ice-maker
	SuperCool™—quickly balances temperatures between cool items and newly placed goods	SuperCool™—quickly balances temperatures between cool items and newly placed goods
	SuperFreeze™—quickly balances temperatures between frozen items and newly placed goods	SuperFreeze™—quickly balances temperatures between frozen items and newly placed goods
Convenience	Pre-assembled with stainless steel panels and handles for quick installation	Pre-assembled with stainless steel panels and handles for quick installation
	All-LED sidewall and theater lighting	All-LED sidewall and theater lighting
Efficiency	ENERGY STAR® qualified	ENERGY STAR® qualified
	Sabbath mode	Sabbath mode
	Economy mode	Economy mode
Capacity	16 cu ft	20 cu ft

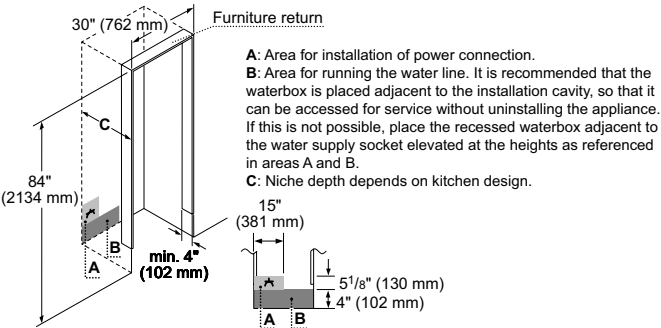
Installation

Refrigeration Dimensions and Installation

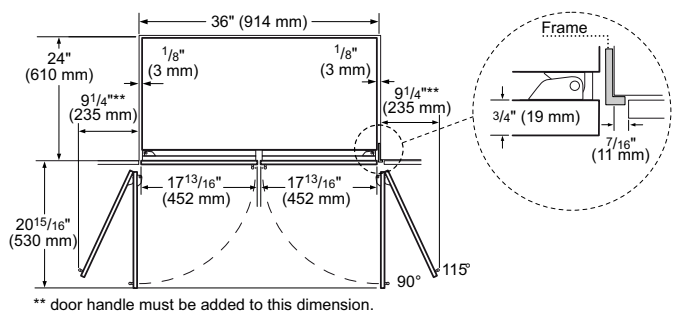
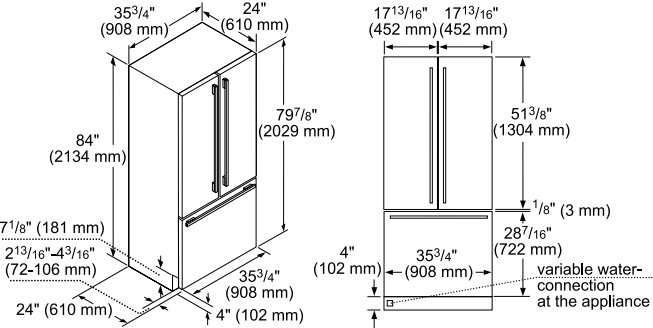
800 Series 30" Built-in Bottom Freezer



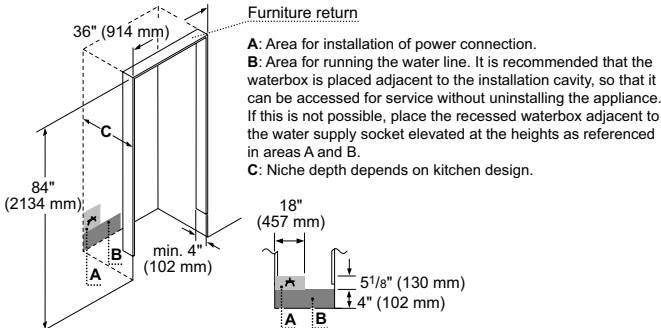
B30BB830SS



800 Series 36" Built-in French Door Bottom Freezer



B36BT830NS



Note: Dimensions are for planning only. For details, see installation manual, or visit www.bosch-home.com/us. Specifications subject to change without notice. For immediate installation dimensions by fax, call 1.925.284.3558. Use code #8317 for a directory of Bosch products. Also available online at dexpress.com.

