

# Make It Yours® Ottomans

Choose from square, rectangular or round shapes in multiple sizes. Then add a leg or skirt, carved molding, a top style and optional nail trim. Ottomans are available in fabric or leather. Personalize your ottoman — *make it yours.*

*make it yours®*

## 1 CHOOSE *your* FABRIC OR LEATHER.

## 2 CHOOSE *your* OTTOMAN SHAPE AND SIZE.

**Square (S)**



**36S** W 36 D 36 H 18.5  
**40S** W 40 D 40 H 18.5  
**44S** W 44 D 44 H 18.5  
**48S** W 48 D 48 H 18.5  
**52S** W 52 D 52 H 18.5  
**56S** W 56 D 56 H 18.5  
**60S** W 60 D 60 H 18.5

**Rectangular (R)**



**52R** W 52 D 40 H 18.5  
**56R** W 56 D 40 H 18.5  
**60R** W 60 D 40 H 18.5

**Thin Rectangular (T)**



**48T** W 48 D 36 H 18.5  
**52T** W 52 D 36 H 18.5  
**56T** W 56 D 36 H 18.5  
**60T** W 60 D 36 H 18.5

**Round (D)**



**36D** Diameter 36 H 18.5  
**40D** Diameter 40 H 18.5  
**44D** Diameter 44 H 18.5  
**48D** Diameter 48 H 18.5

## 3 CHOOSE *your* BASE - A LEG OR SKIRT. CHOOSE *your* WOOD FINISH (if applicable).



**1**  
Plain Tapered Leg



**2**  
Turned Leg



**3\***  
12" Dressmaker Skirt (fabric only)



**6\***  
Base to the Floor



**7**  
Acrylic Leg



**8**  
Spool Leg



**9**  
Leg with Antique Brass Ferrule



**0**  
Leg with Brushed Nickel Ferrule

\*Optional casters are available on skirt and base to the floor versions.

## 4 CHOOSE *your* MOLDING.

Choose Double Welt or Nail Trim above molding. Molding is not available on Round, Skirt or Base to the Floor option ottomans.



**A**  
Plain Square (2" high)



**B**  
Beaded (2" high)



**C**  
Channeled (2" high)



**X**  
No Molding

## Make It Yours® Ottomans

make it  
yours®

### 5 CHOOSE your TOP STYLE.



**E**

Biscuit Tufted Top  
(not available on Round)



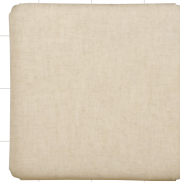
**F**

Picture Frame Top



**M**

Mitered Top with Button



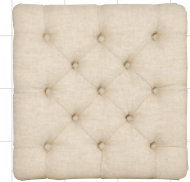
**P**

Plain Top  
(not available on leather styles)



**S**

Plain Box Border-  
French Stitched Top  
(not available on leather styles)



**T**

Tufted Top

### 6 CHOOSE your NAIL TRIM AND FINISH (if applicable).

Nail trim is applied at base of ottoman. If a carved molding is selected, nail trim is applied at top of molding. All nail finishes are available. Nail trim is not available on Skirt option ottomans. **NOTE: Tiles (K) and Links (L) nail patterns are not available when selected in combination with any of the 2" wood moldings, unless the ottoman is a base to the floor style.**



**O**

Single Row



**D**

Double Row  
(2.25" spacing  
between rows)



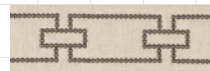
**H**

Deco  
(#9 nail only)



**K**

Tiles  
(#9 nail only)



**L**

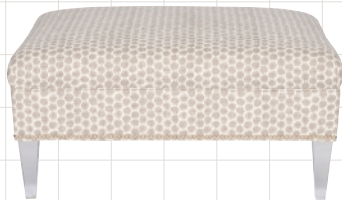
Links  
(#9 nail only)



**N**

No Nails

GET CREATIVE AND make it yours!



**V36S7XPO PERSONALIZED OTTOMAN**  
Fabric Upholstered, 36" Square, Acrylic Leg,  
No Molding, Plain Top, Single Row Nail Trim



**L40D6XMK PERSONALIZED OTTOMAN**  
Leather Upholstered, 40" Round, Base to the  
Floor, No Molding, Mitered Top with Button,  
Tiles Nail Trim



**V52T8APO PERSONALIZED OTTOMAN**  
Fabric Upholstered, 52" Thin Rectangular,  
Spool Leg, Plain Square Molding, Plain Top,  
Single Row Nail Trim