

THE  
**CLASSIC**  
PORTFOLIO  
*Artisan*

DINING



**Stanley**  
FURNITURE





TIMELESS. AGELESS. ICONIC. FIRST-CLASS. ARCHETYPAL. They all mean “classic.” Trends are all well and good, but sometimes you crave that which is enduring. You need to surround yourself with things that you know will stand the test of time. That is why we created The Classic Portfolio.

Have you ever asked yourself why some things never go out of style? The little black dress, a red sports car, a great steak? The reason is deceptively simple. When something is so perfect from the outset, there is simply no room for improvement.

It is the same with furniture—some looks are so enduring, they have not only stood the test of time, but influenced the styles that followed.

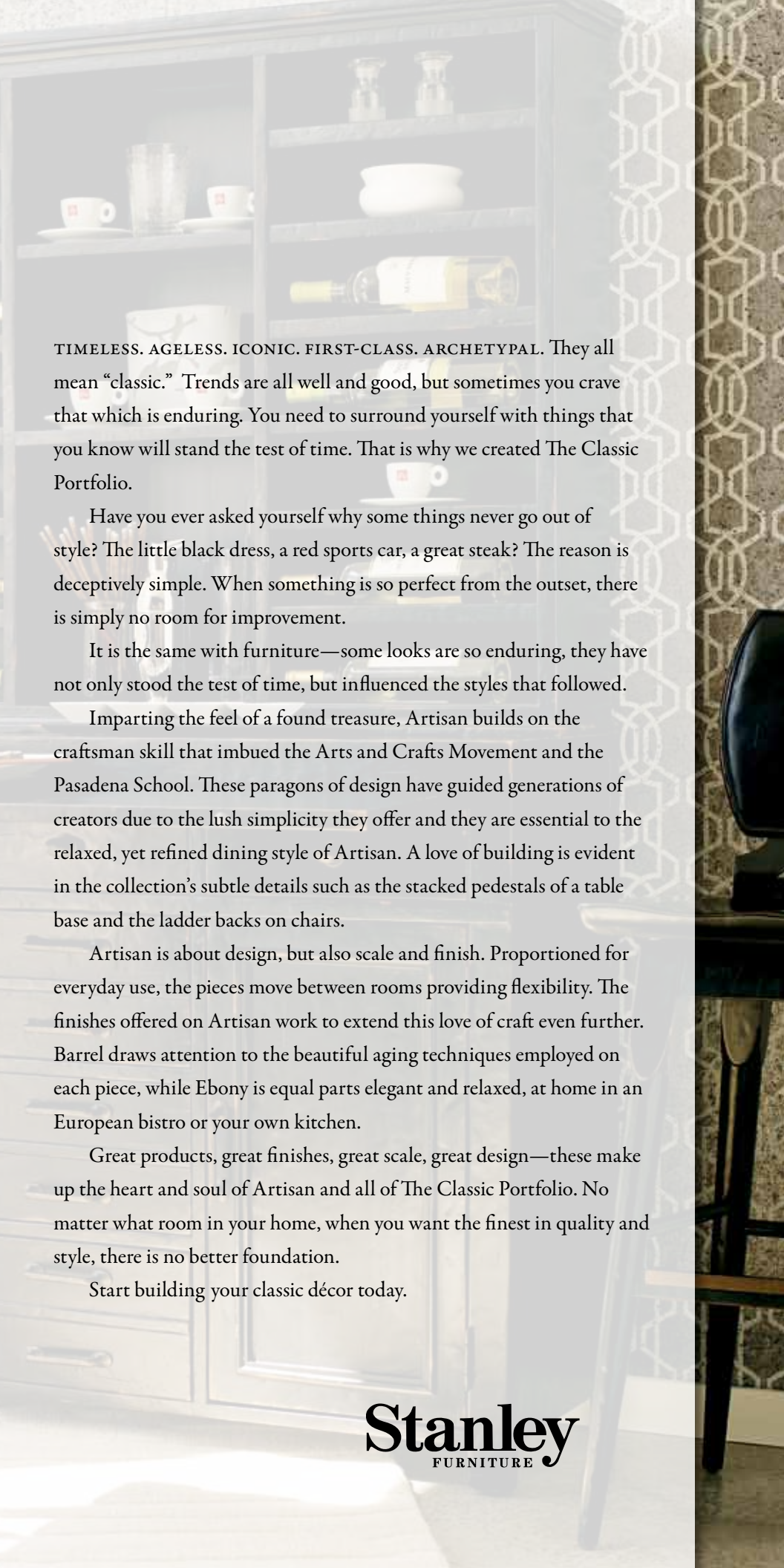
Imparting the feel of a found treasure, Artisan builds on the craftsman skill that imbued the Arts and Crafts Movement and the Pasadena School. These paragons of design have guided generations of creators due to the lush simplicity they offer and they are essential to the relaxed, yet refined dining style of Artisan. A love of building is evident in the collection’s subtle details such as the stacked pedestals of a table base and the ladder backs on chairs.

Artisan is about design, but also scale and finish. Proportioned for everyday use, the pieces move between rooms providing flexibility. The finishes offered on Artisan work to extend this love of craft even further. Barrel draws attention to the beautiful aging techniques employed on each piece, while Ebony is equal parts elegant and relaxed, at home in an European bistro or your own kitchen.

Great products, great finishes, great scale, great design—these make up the heart and soul of Artisan and all of The Classic Portfolio. No matter what room in your home, when you want the finest in quality and style, there is no better foundation.

Start building your classic décor today.

**Stanley**  
FURNITURE



# ELEMENTS OF STYLE

## finish / wood characteristics

Artisan offers two intense finish selections, Barrel and Ebony. Barrel exhibits craftsman touches through a variety of distressing techniques, while Ebony imparts a vintage charm through burnishing around the edges.



BARREL (1)



EBONY (8)

## hardware

Simplicity defined, Artisan's unadorned knob and pull hardware are the ideal accompaniment to the collection's understated appeal. Finished in a tarnished brass patina, the hardware completes the journeyman aesthetic that pervades the collection.



BARREL PULL



BARREL KNOB



EBONY PULL



EBONY KNOB





*Pull up a chair in celebration of*  
**GOOD TASTE.**

TOP: Distressing details on the tabletop are subtle, but honest, evidence of the craftsman's handiwork.

MIDDLE: Hand-set the table's mechanism to any of three heights; a locking key secures it.

BOTTOM: The hand-carved back of the bar stool—arresting to the eye, pleasing to the touch.





130 44" ROUND TABLE TOP, 230 ADJUSTABLE  
HEIGHT TABLE BASE (SHOWN AT BAR HEIGHT),  
73 WOOD BAR STOOL, 06 BUFFET WITH 106 WINE  
HUTCH (ALL EBONY FINISH) DETAILS: 12, 13



TOP: Why not display wine collections as accents? There's ample storage in the Wine Hutch for up to 28 bottles.

MIDDLE: A wire management grommet hides inconspicuously in the corner.

BOTTOM: An additional work surface tucks away in its pocket when not in use.



135-11-106  
**Wine Hutch**

135-11-06  
**Buffet**  
Barrel finish  
(details p. 12)



135-11-72  
**Wood Counter Stool**  
Barrel finish  
(details p. 13)











136 PEDESTAL TABLE TOP, 236 PEDESTAL TABLE BASE,  
70 LADDERBACK ARM CHAIR, 60 LADDERBACK SIDE CHAIR,  
O6 BUFFET (ALL BARREL FINISH) DETAILS: 12, 13



TOP: Skiving on the table's top suggests the piece enjoyed an interesting prior life.

MIDDLE: Modernity must be acknowledged. The Buffet does so tastefully with a convenient, hidden outlet.

BOTTOM: The Pedestal Table's architectural under-pinnings convey substance with grace.









135-11-72  
**Wood Counter Stool**  
Barrel finish  
(details p. 13)



73 WOOD BAR STOOL (BARREL FINISH) DETAILS: 13



135-11-130  
**44" Round Table Top**  
Barrel finish

135-11-230  
**Adjustable Height Table Base**  
Metal base  
(details p. 12)

*shown at counter height*



ABOVE: Kick plates protect the footrests of the Wood Bar and Counter Stools.



136 PEDESTAL TABLE TOP (EBONY FINISH), 236 PEDESTAL TABLE BASE (BARREL FINISH), 70 LADDERBACK ARM CHAIR (BARREL FINISH), 60 LADDERBACK SIDE CHAIR (BARREL FINISH), O6 BUFFET WITH 106 WINE HUTCH (BARREL FINISH) DETAILS: 12, 13



TOP: Flatware rests safely in a felt-lined drawer.

BOTTOM: Each passing year will add character to the woven belt leather seat, further complementing the hand-carved distressing details.







## 135-11 Barrel; 135-81 Ebony

Select hardwood solids with mahogany veneers and metal accents



### - 06 BUFFET

One felt-lined, center drawer; two standard drawers; two doors; two adjustable shelves; one pullout shelf; electrical outlet  
48W 16D 36 1/4H (122 x 41 x 92 cm)

SEE COVER, INSIDE FRONT COVER, PAGES 3, 4, 5, 7, 10, 11, 13

### - 106 WINE HUTCH

Holds 28 wine bottles; one removable shelf; one stationary shelf in center; wire management grommet  
For use with 06 Buffet

48 3/8W 9 3/8D 37H (123 x 24 x 94 cm)

SEE INSIDE FRONT COVER, PAGES 3, 4, 5, 10, 11



135-11-136 TOP, 135-11-236 BASE



135-11-136 TOP, 135-81-236 BASE



135-81-136 TOP, 135-11-236 BASE



135-81-136 TOP, 135-81-236 BASE

### - 136 PEDESTAL TABLE TOP

For use with 236 Pedestal Table Base; no leaves available  
64W 42D 3 3/16H (163 x 107 x 8 cm)

### - 236 PEDESTAL TABLE BASE

For use with 136 Pedestal Table Top; assembly required  
44 1/2W 31 3/8D 29H (113 x 80 x 74 cm)

Overall with 136 Table Top: 64W 42D 32 3/16H (163 x 107 x 82 cm)

SEE COVER, PAGES 6, 7, 10, 11



DINING HEIGHT: 30H



DINING HEIGHT: 30H



COUNTER HEIGHT: 36H



COUNTER HEIGHT: 36H



BAR HEIGHT: 42H



BAR HEIGHT: 42H

### - 130 44" ROUND TABLE TOP

For use with 236 Adjustable Height Table Base; no leaves available  
44 Diameter 2H (112 x 5 cm)

### - 230 ADJUSTABLE HEIGHT TABLE BASE

For use with 136 Round Table Top; metal base; adjustable height 30-42H; hand-locking mechanism; ships with locking key  
28W 28D 28H (71 x 71 x 71 cm)

Complete table dimensions with base extended at lowest height:  
44 Diameter 30H (112 x 76 cm)

Complete table dimensions with base extended at highest height:  
44 Diameter 42H (112 x 107 cm)

SEE PAGES 2, 3, 8, 9, BACK COVER





**- 60 LADDERBACK SIDE CHAIR**

Woven belt leather seat

Seat: 19 3/4W 17 5/8D 1 3/8H (50 x 45 x 3 cm)

Seat height: 18 1/2H (47 cm)

Overall: 19 3/4W 22 3/4D 39 1/2H (50 x 58 x 100 cm)

SEE COVER, PAGES 6, 10, 11, 13



**- 70 LADDERBACK ARM CHAIR**

Woven belt leather seat

Seat: 22 3/4W 17 3/4D 1 3/8H (58 x 45 x 3 cm)

Arm height: 26H (66 cm)

Seat height: 18 1/2H (47 cm)

Overall: 22 3/4W 23D 39 1/2H (58 x 58 x 100 cm)

SEE COVER, PAGES 6, 7, 10, 11, BACK COVER



**- 72 WOOD COUNTER STOOL**

Wood seat

Seat dimension: 19W 18 1/2D 1 5/8H (48 x 47 x 4 cm)

Seat height: 23 1/2H (60 cm)

Overall: 19W 21 3/4D 41H (48 x 55 x 104 cm)

SEE PAGES 4, 5, 8, 9



**- 73 WOOD BAR STOOL**

Wood seat; swivel seat

Seat: 17 1/2W 18D 1 5/8H (44 x 46 x 4 cm)

Seat height: 29 1/2H (75 cm)

Overall: 17 1/2W 20 11/16D 43H (44 x 53 x 109 cm)

SEE INSIDE FRONT COVER, PAGES 2, 3, 9





**Stanley**  
FURNITURE

P.O. BOX 30 • 1641 FAIRYSTONE PARK HWY • STANLEYTOWN, VA 24168  
[stanleyfurniture.com](http://stanleyfurniture.com)