

Transport yourself to the hills of Italy's  
Piedmonte Region. Work like a baron.

# Barolo

EXECUTIVE HOME OFFICE I99



Convertible keyboard/pencil drawer adds versatility



3-way touch lighting for display area



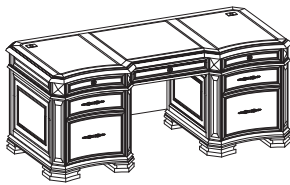
Durable English dovetail drawer construction

thoughtfully**designed**



aspenhome®





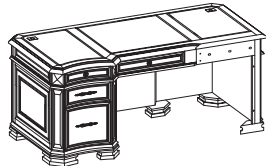
**I99-300T/300B 72" Executive Desk**  
75W x 32H x 36D

**AREA DIMENSIONS:**

Kneehole Area: 22W x 23H x 30D

**FEATURES:**

- Convertible keyboard/pencil drawer
- Locking file drawers hold letter or legal size files



**I99-305 Computer Desk for a Return**  
72W x 31H x 36D

**AREA DIMENSIONS:**

Kneehole Area: 24W x 24H x 27D

Total Footprint Area (305/306): 72W x 86D

**FEATURES:**

- 4 total drawers
- Felt lined top drawers
- Convertible keyboard/pencil drawer
- Locking file drawer holds letter or legal size files



**I99-306 Return Desk**  
53W x 31H x 27D

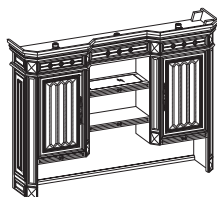
**AREA DIMENSIONS:**

Kneehole Area: 26W x 24H x 19D

Total Footprint Area (305/306): 72W x 86D

**FEATURES:**

- Convertible keyboard/pencil drawer
- Easy-to-configure area for CPU, printer or scanner
- Built-in power director
- USB power hub
- Easy access to back of CPU



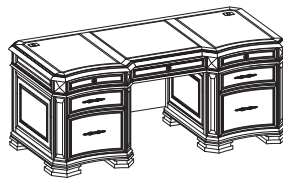
**I99-319 72" Credenza Hutch**  
76W x 56H x 17D

**AREA DIMENSIONS:**

Monitor Area: 22W x 21H x 14D

**FEATURES:**

- 3 adjustable wood-framed glass shelves, 2 glass doors
- 3-way touch lighting for display area



**I99-318 72" Credenza**  
75W x 31H x 25D

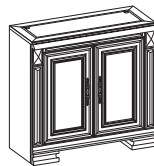
**AREA DIMENSIONS:**

Kneehole Area: 22W x 24H x 21D

CPU Area: 9W x 20H x 19D

**FEATURES:**

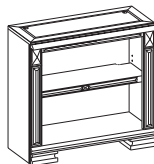
- 4 total drawers
- Felt lined top drawers
- Convertible keyboard/pencil drawer
- USB power hub
- Built-in power director
- Easy-to-configure area for CPU, printer or scanner
- Easy access to back of CPU via back panel
- Locking file drawer holds letter or legal size files



**I99-354 Base with Doors**  
32W x 31H x 14D

**FEATURES:**

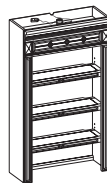
- 2 doors, 1 adjustable wood shelf



**I99-355 Open Base**  
32W x 31H x 14D

**FEATURES:**

- 1 adjustable wood shelf



**I99-353 Open Hutch**  
32W x 56H x 15D

**FEATURES:**

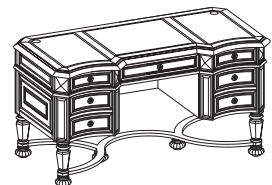
- 3 adjustable wood-framed glass shelves
- 3-way touch lighting



**I99-352 Hutch with Glass Doors**  
32W x 56H x 15D

**FEATURES:**

- 3 adjustable wood-framed glass shelves
- 3-way touch lighting



**I99-60WD Writing Desk**  
60W x 31H x 31D

**FEATURES:**

- 5 total drawers
- Convertible keyboard/pencil drawer
- Locking file drawers hold both letter and legal size files



**I99-331 Lateral File Cabinet**  
44W x 31H x 25D

**FEATURES:**

- Locking file drawers hold letter or legal size files



**I99-299963 Executive Chair (Midnight)**  
27W x 39H x 32D

**AREA DIMENSIONS:**

Seat Height: 20-23"

**FEATURES:**

- Gas lift, knee tilt, 5 star base
- 100% top grain leather

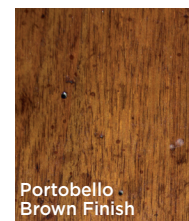
## Style, Finish & Hardware



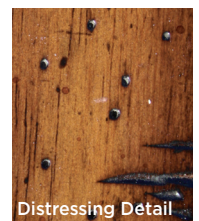
**Diamond Motif**



**Paneled Glass**



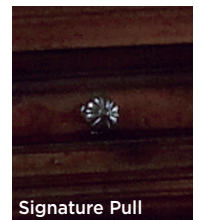
**Portobello  
Brown Finish**



**Distressing Detail**



**Signature  
Handle**



**Signature Pull**