



CHARCOAL GRILLS

LOW, SLOW, OR SEAR—CHARCOAL RE-INVENTED.

**EVERY.
DE[🔩]AIL.
MATTERS.**



**NO DETAIL
TOO SMALL.**



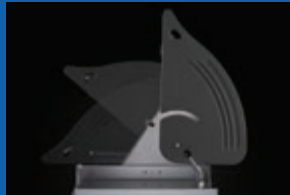
SEE THE DIFFERENCE A NAPOLEON MAKES.

At Napoleon, we understand that every detail matters. We know that even the smallest details add up to make a big difference when curating your perfect grilling experience.

CHARCOAL PROFESSIONAL



Exclusive
Rear Charcoal
Rotisserie Burner



Space-Saving
LIFT EASE™ Roll
Top Lid



Adjustable
Air Vents for
Temperature Control



Easy Front-Loading
Charcoal Door



ACCU-PROBE™
Temperature Gauge



Adjustable
Charcoal Bed



Integrated Tool Hooks



Chrome-Plated
Handles



PRO605CSS

Cooking Area: 605 in² (3900 cm²)

- Two charcoal dividers
- Air vents control the rate of burn for your choice of high intensity heat, slow roasting, or smoking
- Solid stainless steel construction
- Adjustable charcoal bed for multi-level heat control



22" PRO CHARCOAL CART



Rotisserie Ready*
with Stainless Steel
Extension Ring



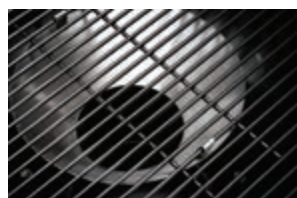
Hinged Cast Iron
Iconic WAVE™
Cooking Grids



Removeable heavy
steel ash catcher



ACCU-PROBE™
Temperature Gauge



Vortex Heat
Management



Folding Side Shelf with
Integrated Tool Hooks



Rugged Weather-
Proof Wheels



Integrated
Bottle Opener



PRO22K-CART-3

Cooking Area: 365 in² (2340 cm²)

- Sturdy cart design with modular lower-panel storage
- Porcelain coated cast iron Iconic WAVE™ cooking grids with three height adjustments
- Hinged lid for easy operation
- Stainless steel heat diffuser
- Adjustable air vents for temperature control



*Rotisserie attachment sold separately.

PRO CHARCOAL LEG



Stainless Steel
Extension Ring with
Rotisserie Holder



Porcelain coated cast
iron Iconic WAVE™
cooking grids



Removable Heavy
Steel Ash Catcher



ACCU-PROBE™
Temperature Gauge



Vortex™ Heat
Management



Wind & Rain Resistant
Smoke Stack Chimney



Rugged Weather-
Proof Wheels



Sturdy Handle with
Integrated Tool Hooks



PRO22K-LEG-3

Cooking Area:
365 in² (2340 cm²)

- Hinged cooking grids with three height adjustments
- Stainless steel heat diffuser

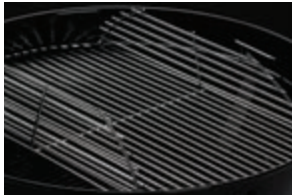
PRO18K-LEG-3

Cooking Area:
240 in² (1548 cm²)

- Easy to assemble
- Available in 22" and 18" models.



CHARCOAL KETTLE



Stainless steel,
hinged cooking grid



Removable Heavy
Steel Ash Catcher



ACCU-PROBE™
Temperature Gauge



4 Cast Aluminum
Leg Joints



Advanced Air Venting



Rugged Weather-
Proof Wheels



Built-In Lid Hanger



Cool Touch Handle



NK22K-LEG-3

Cooking Area:
365 in² (2340 cm²)

NK18K-LEG-3

Cooking Area:
240 in² (1548 cm²)

- Stainless steel air vents
- Sturdy four legged design
- Easy to assemble

- Available in 22" and 18" models.



APOLLO® CHARCOAL WATERSMOKER



ACCU-PROBE™
Temperature Gauge



**Secure Locking
Latches**



**Durable Stainless
Steel Rotisserie Ring***



**Stainless Steel
Cooking Grids**



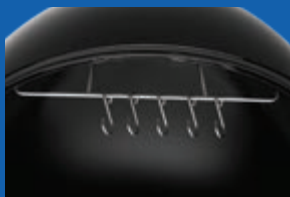
**Large Doors with
Insulated Handles**



**Locking Caster
Wheels**



**Silicone-Sealed
Temperature
Probe Ports**



**Lid with Horizontal Bar
and S-Hooks**



AS22K

Cooking Area:
640 in² (4129 cm²)

AS18K

Cooking Area:
425 in² (2741 cm²)

- Insulated lid handle for safety and comfort
- Adjustable smoke control for the perfect balance of flavour
- Three adjustable inlet vents for precise temperature control

- Includes water pan, charcoal basket, two cooking grids, and five stainless steel "S" hooks
- Available in 22" and 18" models.



14" PORTABLE CHARCOAL GRILL



Adjustable Air Vents for Optimal Air Control



Porcelain-Enameled Lid and Bowl



Steel Plated Drip Pan



Sturdy Four Legged Design



14" Chrome Plated Cooking Grid



Cool-Touch Handle



NK14K-LEG-3

Cooking Area: 143 in² (920 cm²)

- Dual-section charcoal baskets
- Locking lid latches and easy-carry handle
- Lightweight and easy to carry
- Easy to assemble







UPGRADE YOUR GRILLING ACCESSORIES



PRO605 GRILL COVER
PRO605CSS61605



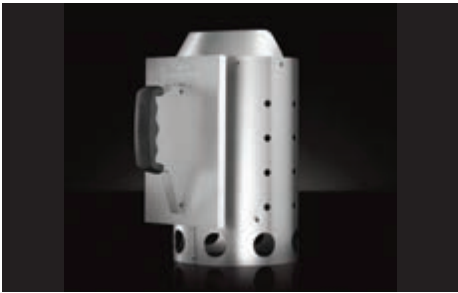
HEAVY-DUTY COVER FOR 22" CART MODEL
PRO22K-CART.....61916



HEAVY-DUTY COVERS FOR 22" & 18" APOLLO SMOKERS
AS18K..... 61918
AS22K..... 61922



CHARCOAL GRILL COVER FOR 22" & 18" LEG MODELS
PRO22K-LEG-3 | NK22K-LEG-3..... 61915
PRO18K-LEG-3 | NK18K-LEG-3..... 61914



PREMIUM ROUND CHARCOAL STARTER
67802



CHICKEN INFUSION ROASTER
56067



DRIP TRAYS
62008



CHARCOAL RAKE AND TONGS
67740

UPGRADE YOUR GRILLING ACCESSORIES



WARMING RACK FOR KETTLE GRILLS

FITS NK22K-LEG-3 | PRO22K-LEG-3 |
PRO22K-CART-3
71022



APPLE WOOD CHIPS

67007



HEAVY DUTY ROTISSERIE KIT

69241



CAST IRON MEAT PRESS

56056



CHARCOAL DIFFUSER RING

67745



**ACCU-PROBE PRO
WIRELESS THERMOMETER**

62147



GENUINE LEATHER BBQ GLOVES

62147



CHARCOAL STORAGE BAG

61015



CAST IRON REVERSIBLE GRIDDLE

56083



GRILL CLEANER

62062



CAST IRON DUTCH OVEN

56062



CUTTING BOARD

70012

SPECIFICATIONS	PRO605CSS	PRO22K-CART-3	PRO22K-LEG-3	PRO18K-LEG-3	NK22K-LEG-3	NK18K-LEG-3	NK14K-LEG-3	AS22K	AS18K
*Lid colour	ss	bk	bk	bk	bk	bk	bk	bk	bk
Vortex™ heat management system	-	S	S	S	S	S	-		
ACCU-PROBE™ temperature gauge	S	S	S	S	S	S	-	S	S
Exclusive removable rear charcoal rotisserie burner	S	-	-	-	-	-	-	-	-
Cast iron Iconic WAVE™ cooking grids	S	S	S	S	-	-	-	-	-
Stainless steel cooking grids	-	-	-	-	S	S	-	S	S
Chrome plated cooking grids	-	-	-	-	-	-	S	-	-
Adjustable grid heights	-	S	S	S	S	S	-	-	-
EASY ROLL® locking casters	S	S	-	-	-	-	-	S	S
Folding side shelf	-	S	-	-	-	-	-	-	-
Built-in lid hanger	-	-	-	-	S	S	S	-	-
Ergonomic hinged lid	-	S	S	S	-	-	-	-	-
Cool touch handle	S	S	S	S	S	S	S	-	-
Removable heavy steel ash catcher	S	S	S	S	S	S	-	-	-
Steel plated ash pan	-	-	-	-	-	-	S	-	-
Stainless steel heat diffuser	-	S	S	S	S	S	-	-	-
Adjustable charcoal bed	S	-	-	-	-	-	-	-	-

SPECIFICATIONS (CONTINUED)	PRO605CSS	PRO22K-CART-3	PRO22K-LEG-3	PRO18K-LEG-3	NK22K-LEG-3	NK18K-LEG-3	NK14K-LEG-3	AS22K	AS18K
Easy access doors	S	-	-	-	-	-	-	S	S
Adjustable air vents	S	S	S	S	S	S	S	S	S
Precision control air vents	S	S	S	S	S	S	-	S	S
Modular lower panel storage	-	S	-	-	-	-	-	-	-
ACCESSORIES	PRO605CSS	PRO22K-CART-3	PRO22K-LEG-3	PRO18K-LEG-3	NK22K-LEG-3	NK18K-LEG-3	NK14K-LEG-3	AS22K	AS18K
Commercial-quality rotisserie kit 4 forks	O	-	-	-	-	-	-	-	-
Heavy-duty rotisserie kit	-	O	O	O	-	-	-	-	-
Warming rack	S	O	O	O	O	O	-	-	-
Charcoal starter	O	O	O	O	O	O	O	O	O
Toolset hanger	-	-	O	O	O	O	-	-	-
Charcoal baskets	-	S	O	O	O	O	S	-	-
Heavy-duty cover	O	O	O	O	O	O	-	O	O
DIMENSIONS	PRO605CSS	PRO22K-CART-3	PRO22K-LEG-3	PRO18K-LEG-3	NK22K-LEG-3	NK18K-LEG-3	NK14K-LEG-3	AS22K	AS18K
Total width in inches (cm)	67.5 (171)	46 (84)	23 (59)	21 (53)	23 (59)	21 (53)	14 (35.56)	22 (56)	18 (46)
Total depth in inches (cm)	24.75 (63)	29.5 (75)	28.5 (72)	25 (63)	28 (71)	24.5 (62)	14 (35.56)	22 (56)	18 (46)
Total height in inches (cm)	49.25 (59.25)	44 (111)	42 (107)	39.5 (100)	41 (104)	38.5 (97)	18 (45.72)	55 (140)	45 (114)
Total cooking area	605 in ²	365 in ²	365 in ²	240 in ²	365 in ²	240 in ²	143 in ²	640 in ²	425 in ²

S = standard O = optional *Lid Colours: ss = stainless steel, bk = black



napoleon.com

24 Napoleon Road, Barrie, Ontario, L4M 0G8
103 Miller Drive, Crittenden, Kentucky, USA 41030
7200 Trans Canada Highway, Montreal, Quebec H4T 1A3

PHONE: 1-888-721-8324



Follow us on social
[@napoleonproducts](https://www.instagram.com/napoleonproducts)

Authorized Dealer

Approved by Intertek Testing Services to standards in the USA and Canada: ANSI Z21.58 / CSA 1.6 - Outdoor Cooking Gas Appliances. All specifications and designs are subject to change without prior notice due to ongoing product improvements. Consult your owner's manual for complete installation and operating instructions and check all local and national Building Codes and Regulations. Not all features available on all models. Images and colors may not be exactly as shown. Napoleon is a trademark of Wolf Steel Group Inc. and is used under license.



Printed in Canada
ADB2N2-CHAR (ADB2CFL)