
VACUUM SEAL DRAWER

INSTALLATION GUIDE

Components required	3
Accessing your product specifications	4
Unpack product	6
Install the air filter	7
Remove the transit screws	8
Install anti-tip bracket	9
Position in cavity	10
Adjust drawer	11
Secure to cavity	12
Fit Professional handle	13
Checklist	14

MINIMAL

VB30SMG3, VB30SMB3

CONTEMPORARY

VB30SCX3

PROFESSIONAL

VB30SPEX3

COMPONENTS REQUIRED

TOOLS

Not supplied

- ☐ T20 star-head screwdriver
- ☐ 3/16" (5mm) Hex key
- ☐ Flat-head screwdriver
- ☐ Pliers
- ☐ Shims

PARTS

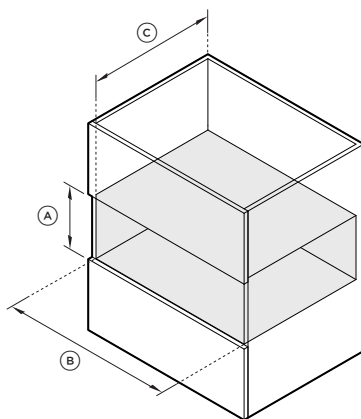
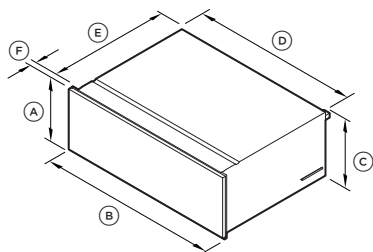
Supplied

- ☐ Power cords (1)
- ☐ T20 4x20 countersunk screws (4)
- ☐ T20 4x15 screws (4)
- ☐ Anti-tip bracket (2)
- ☐ External vacuuming accessory kit
 - Suction inlet adapter (1)
 - Tube (1)
 - Vacuum stopper (1)
 - Stopper adapter (1)

ACCESSING YOUR PRODUCT SPECIFICATIONS



For full product, cabinetry and service specifications, refer to the Planning Guide. To access the Planning Guide, scan the QR code or visit fisherpaykel.com/specify. Search by appliance type, product name or model code.



PRODUCT DIMENSIONS	inch	mm
(A) Overall height	10 11/16	271
(B) Overall width	29 7/8	758
(C) Chassis height	10 11/16	271
(D) Chassis width	28 1/2*	724*
(E) Chassis depth	21 11/16	551
(F) Front panel thickness		
Minimal and Contemporary models	13/16	20
Professional models	15/16	24

*Including side brackets

CAVITY DIMENSIONS	inch	mm
(A) Minimum inside height of cavity	10 3/4	273
(B) Minimum inside width of cavity	28 1/2	724
(C) Minimum inside depth of cavity	22 13/16	580
Recommended cabinet height	10 3/4	273
Recommended cabinet width	30	762

PRIOR TO INSTALLATION

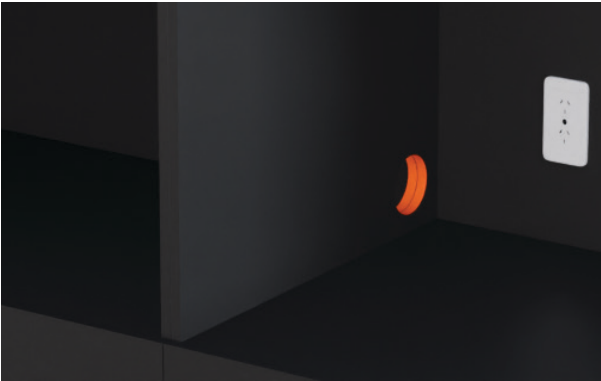


fisherpaykel.com/specify

1. Refer to the Planning Guide for cabinetry, cavity, panel and service specifications.

2. Ensure the cabinet meets the minimum cavity specifications required.

The cabinet must be level and square to prevent the need for product adjustments such as shimming.



UNPACK PRODUCT



1. Carefully remove the warming drawer and accessories box from the packaging.



2. Dispose of packaging responsibly.

INSTALL THE AIR FILTER



1. Using pliers, remove the locking cap and insert into the holder.



2. Using a flat-headed screwdriver, fit the air filter.



3. Slide the air filter cover over the air filter opening.

REMOVE THE TRANSIT SCREWS

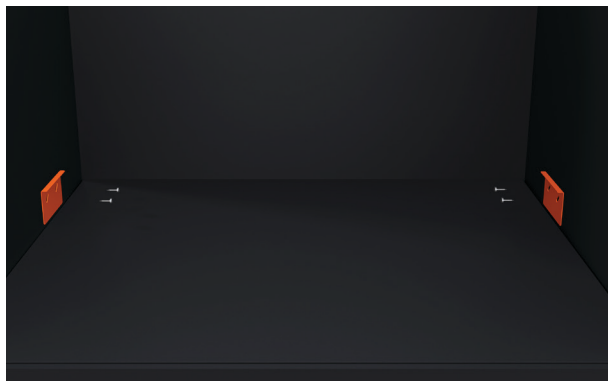


1. Unscrew the transport screws from under the power cable and holder

INSTALL ANTI-TIP BRACKET

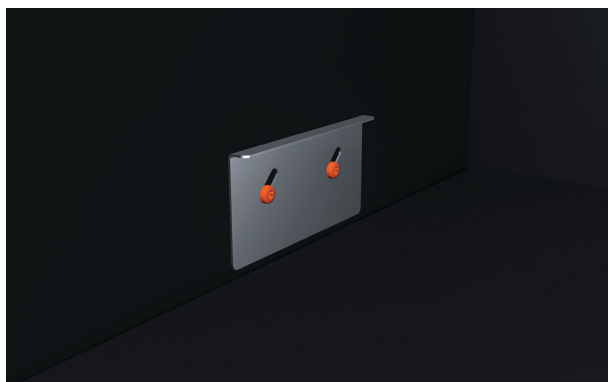
The anti-tip brackets prevent the drawer from tipping over when opening the drawer.

Do not open the drawer if the anti-tip brackets are not installed.



1. Position the anti-tip brackets on both sides of the cabinetry.

Brackets should be located flush to the base of the cabinet and 15 3/16" (385mm) from the front of the cabinet for Minimal and Contemporary models and 14 15/16" (380mm) for Professional models.



2. Secure the anti-tip brackets using the supplied screws.

POSITION IN CAVITY



1. Connect the power cable to the power supply.

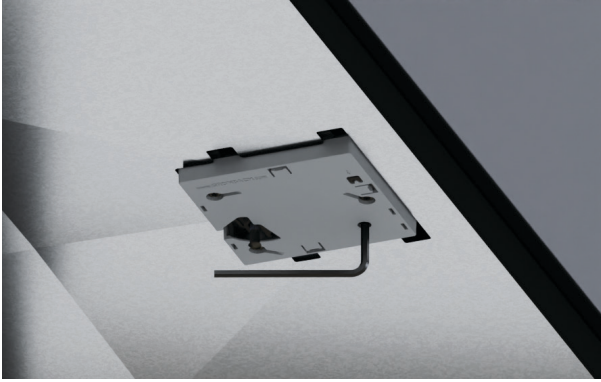


2. Apply protective tape to adjacent cabinetry panels before lifting product into place.



3. Carefully push the vacuum drawer into the cabinetry. Ensure the side brackets engage with the anti-tip brackets

ADJUST DRAWER

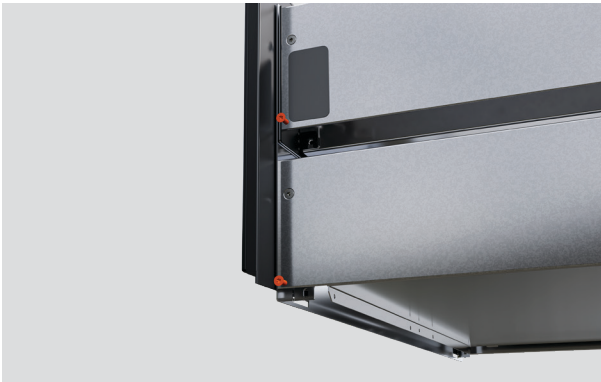


1. Adjust depth:

Open the drawer fully.

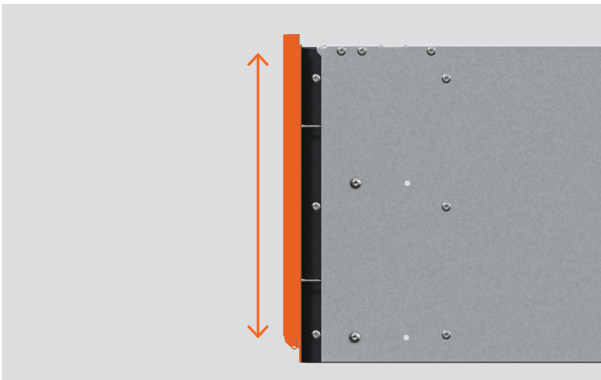
Use a hex key to adjust the front panel position by up to 3/16" (4 mm).

Turn clockwise to move the panel back, or counter-clockwise to move it forward.



1. Adjust height:

Open the drawer fully and slightly loosen the T20 star head screws.



2. Adjust height:

Adjust the drawer front height by up to 3/16" (5mm).

Re-tighten the screws to secure.

SECURE TO CAVITY



2. Open the drawer and extend fully.

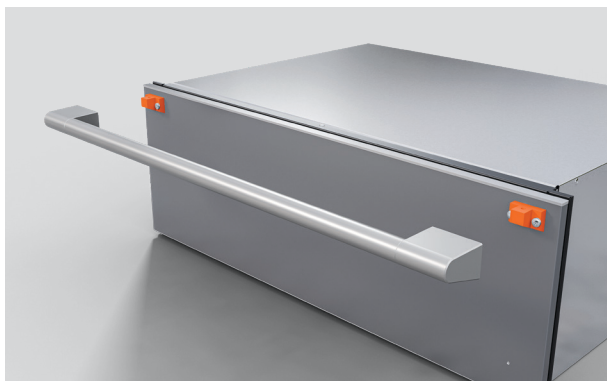


3. Secure the drawer to the cabinetry using 4x20 T20 star head countersunk screws.



4. Close the drawer to check alignment and readjust if needed.

FIT PROFESSIONAL HANDLE



1. Align the handle with the mounts on the product.



2. Secure using the supplied hex key.

CHECKLIST

Installation checks

- ☐ All clearances are correct.
- ☐ The product is level and securely fitted in the cabinetry.
- ☐ All internal packaging is removed.
- ☐ The isolating switch can be easily reached.

Test operation

- ☐ Open the drawer.
- ☐ Press the power button to turn it on.
- ☐ Press the power button to turn it off before closing the drawer.

Complete and keep for safe reference:

Model _____

Serial no. _____

Purchase date _____

Purchaser _____

Dealer address _____

Installer's name _____

Installer's signature _____

Installation company _____

Installation date _____

