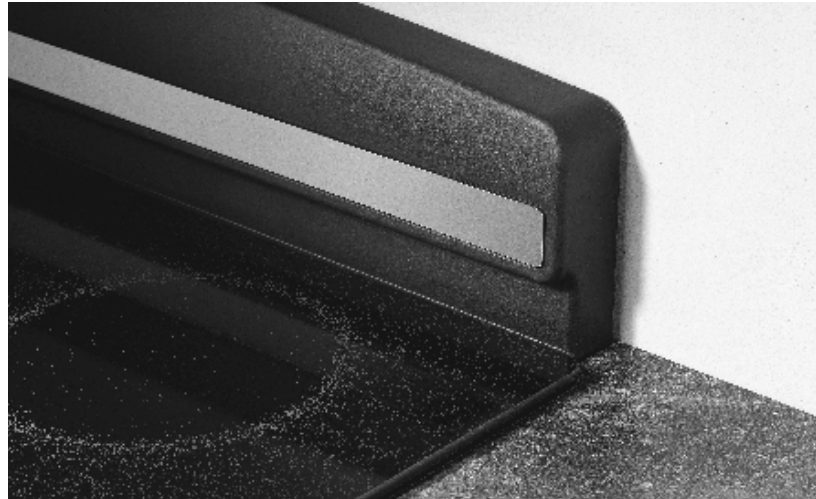


# GE Profile™ and GE® Range Accessory Guide

slide-in ranges • drop-in ranges • cooktops • merchandising 2002 • microwave ovens • warming drawers • des



designer hoods • telescopic downdraft systems • high-performance hoods • backguard kits • venting kits • du

The maximum in cooking performance and versatility.



*We bring good things to life.*

# Slide-In and Drop-In Ranges



Shown in free-standing cutout without backguard kit—note gap behind cooktop

## Backguard kits – smooth-top ranges

Designed for slide-in models when replacing a free-standing range, this kit is used when the countertop is cut all the way to the wall.

**30" Electric CleanDesign Slide-in and Drop-in ranges** (Models: JS966/968, JSP56/57, JSP46/47, JD966/968 and JDP46/47)

**JXS39SS**—Stainless steel

**JXS36WW**—White

**JXS36CC**—Bisque

**JXS36BB**—Black



Installed with counter backsplash

Note: Endcap overlaps countertop backsplash.

Installed without counter backsplash

## Backguard kits – coil and gas ranges

Contains reversible end caps, screws and installation instructions for an easy custom built-in appearance.

**30" Electric coil Slide-in and Drop-in and gas Slide-in ranges** (Models: JSP34, JSP26, JSS26, JSS16, JGSP44 and JGSP23)

**JXS31**—White

**JXS32**—Brushed-chrome

**JXS33**—Almond

**JXS34**—Black

**JXS35**—Bisque

**27" Electric Drop-in ranges**

(Models: JMP31, JMP28 and JMS08)

**JX27RWH**—White

**JX27RBK**—Black

## Maintop rear filler strip kit

The strip kit fills in the gap at the rear of the range for a more flush custom appearance. Kit color should match color of range, not color of cooktop.

Note: Gas sealed burner models JGSP44 and JGSP23 are shipped with a "vented" rear filler trim kit.

**30" Electric CleanDesign Slide-in and Drop-in ranges** (Models: JS966/968, JSP56/57, JSP46/47, JD966/968 and JDP46/47)

**JXS66WW**—White\*\*\*

**JXS66CC**—Bisque\*\*\*

**JXS66BB**—Black\*\*\*

**30" Electric coil Slide-in and Drop-in ranges\*\*** (Models: JSP34, JSP26, JSS26, JSS16)

**JXS62BB**—Black

**JXS63WW**—White

**JXS64AA**—Almond

**JXS65CC**—Bisque

**JXS28**—Brushed-chrome

\*Shipped with range.

\*\*Kit contains three widths of filler strips, clips, screws and installation instructions.

\*\*\*Not required if countertop is cut as specified in installation instructions.

## End cap kit

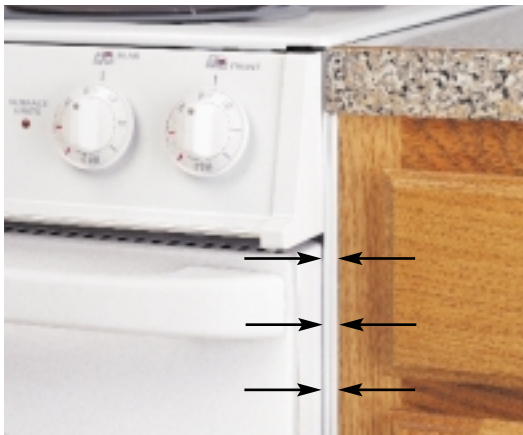
Used when installing slide-in range models into a countertop that has been previously notched for front end caps. The standard flush front end caps on the range can be replaced with the notched end caps in the kit. The kit contains right and left end caps and installation instructions.

**30" Electric coil Slide-in and gas Slide-in ranges** (Models: JSP34, JSP26, JSS26, JSS16, JGSP44 and JGSP23)

**JXS40**—Chrome

Range has been pulled away from countertop in photo to better illustrate end cap installation.





## Vertical side trim kit

- These side trim extensions are used to close the gaps between a slide-in range and adjacent base cabinet (up to 3/16" each side). Kit contains two side trim pieces and installation instructions.

### 30" Electric CleanDesign Slide-in ranges

(Models: JS966/968, JSP56/57 and JSP46/47)

**JXS86WW**—White

**JXS86CC**—Bisque

**JXS86BB**—Black

### 30" Electric coil slide-in and gas

**Slide-in ranges** (Models: JSP34, JSP26, JSS26, JSS16, JGSP44 and JGSP23)

**Pub. No. 3-A040**



## Body side kit

- These side panels are used when one side of the slide-in range is exposed. Kit contains one body side and installation instructions. For free-standing application, two kits are needed. Total installed range width would be 31-1/4" when two side panel kits are used.

### 30" Electric CleanDesign Slide-in ranges

(Models: JS966/968, JSP56/57 and JSP46/47)

**JXS76WW**—White

**JXS76CC**—Bisque

**JXS76BB**—Black



## Lower trim kit – slide-in ranges

- Color-matched toekick is designed to be used when the range needs to be raised to the highest position to accommodate thick countertop material such as tile or granite. Kit also includes extended leveling legs and instructions. Use kit when countertop height is 36-1/2" to 38" high.

### 30" Electric CleanDesign Slide-in ranges

(Models: JS966/968, JSP56/57 and JSP46/47)

**JXS56WW**—White

**JXS56CC**—Bisque

**JXS56BB**—Black

### 30" Electric coil Slide-in and gas

**Slide-in ranges** (Models: JSP34, JSP26, JSS26, JSS16, JGSP44 and JGSP23)

**JXS52BB**—Black

**JXS53WW**—White

**JXS55CC**—Bisque



## Lower trim kit – drop-in ranges (not shown)

- When a drop-in is installed in an existing cutout greater than 27-1/4" from the counter to the cabinet crossrail, a lower trim kit should be used to fill the gap at the bottom of the range. Kit dimensions 30" wide x 4" high.

### 30" Electric CleanDesign, Coil and Drop-in ranges

(Models: JD966/968, JDP46/47, JDP39, JDP36 and JDS26)

**JXS96WW**—White

**JXS96CC**—Bisque

**JXS96BB**—Black



# Cooktops

## Optional modules for electric Select-Top™ cooktop

■ Customize your cooktop to suit your taste and convenience.

**30" Dual modular and single modular** (Models: JP389 and JP385 are shipped without any modules)

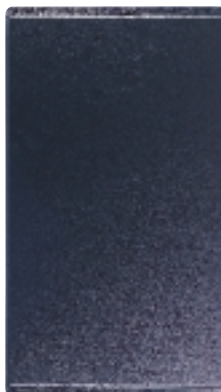
(JP380 – Grill cover only)



**Grill Module**  
**JXDL44LN**



**Griddle Module**  
**JXDD44R** (use with  
optional grill)



**Grill Cover**  
**JXDM3**–White  
**JXDM2**–Black  
**JXDM4**–Black (for  
JP380 patio grill only)



**Ribbon Module**  
**JXDR50VW**–White  
**JXDR50VB**–Black



**Coil Module**  
**JXDC44RWH**–White  
**JXDC43RBL**–Black

## Optional modules for gas modular cooktop

■ Choose optional modules that are tailored to your needs.

**30" Single modular** (Model: JGP389)



**Gas Grill Module**  
**JXGG89**



**Gas Griddle Module**  
**JXGL89** (use with  
optional grill)



**Gas Grill Cover**  
**JXGC89W**–White  
**JXGC89B**–Black



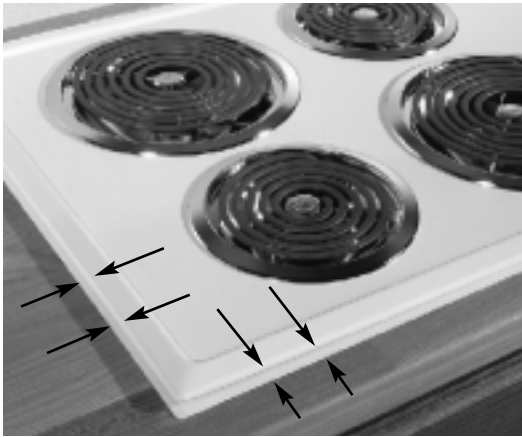
**Two-Burner Gas Module**  
**JXGB89W**–White  
**JXGB89B**–Black



## Universal Griddle

■ This non-stick, professional griddle fits all electric smooth top ranges, cooktops, electric bridge elements and gas ranges.

**ZX375**



## Cooktop filler trim kit

- When replacing older\* GE 30" electric cooktop models with a newer GE electric cooktop, use this one-piece trim to fill in oversize hole left by older cooktop. Kit contains one-piece trim and installation instructions.

### **30" Electric CleanDesign cooktop**

(Models: JP938, JP930, JP350, JP340 and JP326)

**JXTR31W**—True white

**JXTR31C**—True bisque

**JXTR31B**—Black (use with black glass cooktops with a white, bisque or black pattern)

\*Before 1991



## Flush mount trim kit

- For installation of a cooktop flush or recessed into the countertop. Kit contains template, instructions, reflective foil and color-matched sealant.

### **36" and 30" Electric CleanDesign cooktop**

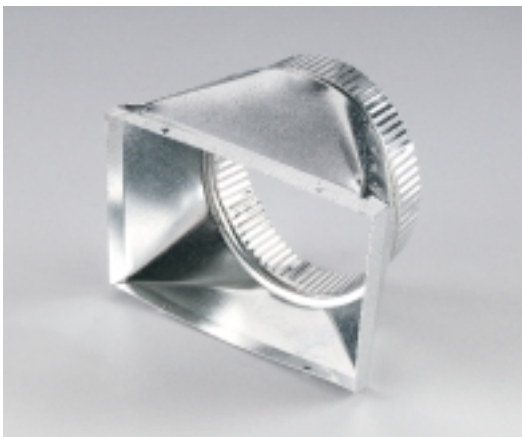
(Models: JP968, JP960, JP938, JP930, JP350 and JP340)

**JXFLMTW**—True white

**JXFLMCC**—True bisque

**JXFLMBB**—Black (use with black glass cooktops with a white, bisque or black pattern)

**Not for use with stainless models. Photo shows "flush" installation. When installed, no part of the kit is visible except the color-matched sealant.**



## Special offset adapter

- For rear wall venting installations on gas and electric downdraft cooktops when transitioning from a rectangular to a round duct.

### **30" Electric and gas downdraft cooktop**

(Models: JP989 and JGP989)

**JXRW89**



## Required venting kit

- Motor, blower and downdraft housing assembly required for JGP656 integrated downdraft gas cooktop with vent controls on the cooktop adjacent to the burner controls.

### **36" Integrated downdraft gas cooktop**

(Model: JGP656)

**JXBA56WW**—White

**JXBA56BB**—Black

# Ventilation



## Chimney cover – designer hoods

- Covers exposed duct work running from the hood to ceilings greater than 8'. Fits both 30" and 36" models.

### 30" and 36" designer hoods

(Models: JV966, JV965, JV936 and JV935)

**JCCHSS**—Stainless steel

**JCCHWW**—White

**JCCHCC**—Bisque

**JCHBB**—Black



## Commercial baffle filter kit – designer hoods

- Heavy-duty commercial style filters can be used in place of household filters shipped with the designer hood.

### 30" and 36" designer hoods

(Models: JV966, JV965, JV936 and JV935)

**JXBF36SS**—36"

**JXBF30SS**—30"



## Duct transition kit – designer hoods

- For designer hoods, 7" round duct to 3-1/4" x 10" rectangular duct transition for rear wall discharge.

### 30" and 36" designer hoods

(Models: JV966, JV965, JV936 and JV935)

**JXDW1**



## Optional damper accessory

- Round damper kit allows a high-performance hood to fit a standard 7" round duct.

### High-performance and performance hoods

(Models: JV666, JV665, JV636, JV635, JV566, JV536, JV565 and JV535)

**JXDA23**





## Optional damper accessory

- Allows a deluxe and standard hood to fit a standard 7" round duct.

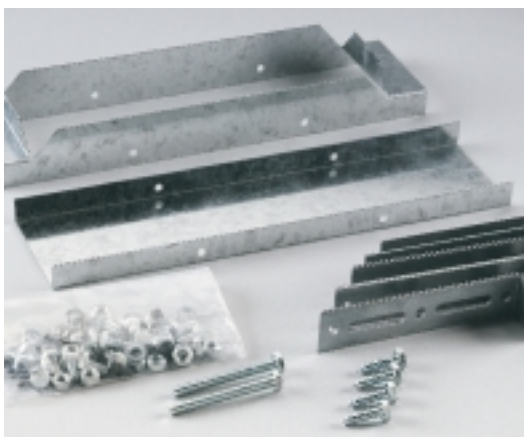
**Deluxe hoods** (Models: JV347 and JV327)  
**JXDA22**



## Outdoor remote installation kit – telescopic downdraft system

- Allows the blower motor to be mounted remotely to an outside wall with a protective weather cover. Blower motor is mounted inside the weather cover and the blower does not take up space inside kitchen cabinet. This ensures noise and vibration are not present inside the kitchen. Kit includes: Damper, junction box, blower mounting, weather cover and mounting hardware. For use with JVB67, JVB37 and JGP656.

**JXBC57**



## Indoor remote installation kit – telescopic downdraft system

- Allows the blower motor to be installed remotely indoors. For use with JVB67, JVB37 and JGP656 only.

**JXRB57**



## Cord kit – hoods

- Allows range hoods to be installed with a plug and receptacle instead of being “hard-wired”. This is ideal when the builder or homeowner wants to upgrade to an Over-the-Range (OTR) Spacemaker® microwave hood. By using this optional installation method and a separate 15 amp circuit, there is no need to have an electrician return to the home/job site when an OTR is installed.

**JXHC1**

# Microwave Oven Trim Kits



## Deluxe built-in trim kit: 2.1 and 1.8 cu. ft. models

- Allows the 1.8 countertop microwave oven to be installed in a wall or cabinet alone, or over a GE® 27" or 30" single electric wall oven as shown.

### 30" Deluxe trim kits

(JE1860/JE1840) (JE2160)

Stainless steel	<b>JX1830SB</b>	<b>JX2130SS</b>
White	<b>JX1830WB</b>	<b>JX2130WW</b>
Bisque	<b>JX1830CB</b>	<b>JX2130CC</b>
Black	<b>JX1830CB</b>	<b>JX2130CC</b>

### 27" Deluxe trim kits

(JE1860/JE1840) (JE2160)

<b>JX1827SB</b>	<b>JX2127SS</b>
<b>JX1827WB</b>	<b>JX2127WW</b>
<b>JX1827CB</b>	<b>JX2127CC</b>
<b>JX1827BB</b>	<b>JX2127BB</b>



## Deluxe built-in trim kit: 1.6 cu. ft. models

- Allows the 1.6 countertop microwave oven to be installed in a wall or cabinet alone, or over a GE 30" or 27" single electric wall oven as shown.

### 30" Deluxe trim kits

(Models: JE1660)

<b>JX1530MWW</b> —White
<b>JX1530MBW</b> —Black

### 27" Deluxe trim kits

(Models: JE1660)

<b>JX1527MWW</b> —White
<b>JX1527MBW</b> —Black



## Deluxe trim kit: 1.5 cu. ft. Profile™ models

- Allows the 1.5 countertop microwave oven to be installed in a wall or cabinet alone, or over a GE 30" or 27" single electric wall oven, or a convection wall oven for a complete convection cooking center.

### 30" Deluxe trim kits (Model: JE1590)

<b>JX1530CSC</b> —Stainless steel
<b>JX1530CWC</b> —White
<b>JX1530CCC</b> —Bisque
<b>JX1530CBC</b> —Black

### 27" Deluxe trim kits (Model: JE1590)

<b>JX1527CSC</b> —Stainless steel
<b>JX1527CWC</b> —White
<b>JX1527CCC</b> —Bisque
<b>JX1527CBC</b> —Black



## Built-in trim kit: 1.0 cu. ft. models

- For a custom built-in appearance, this kit allows the Spacemaker II™ microwave oven to be installed into a wall or cabinet alone.

### 27" Trim kits (Models: JEM31 and JEM25)

<b>JX827SS</b> —Stainless steel
<b>JX827WN</b> —White
<b>JX827CD</b> —Bisque
<b>JX827BN</b> —Black



## Hanging kit: .6, .7 and 1.0 cu. ft. models

- This hanging kit allows installation under a cabinet.

**Hanging kit** (Models: JE620, JE740, JE610, JEM25 and JEM31)

**Pub. No. 4-A019**



# Miscellaneous



## Wok holder

- Made of black porcelain cast iron, this accessory sits on the grate of the maximum output burner to hold a traditional round-bottom wok. Wok is *not* included.

(Models: JGP960, JGP930, JGP636, JGP336, JGSP44, JGB920, JGB910, J2B900, JGBP90, JGBP86, JGBP85, JGBP79, JGBP35 and JGBP30)

**JXWK**

(Models: JGP963, JGP962, JGP933 and JGP932)

**JXWK2**



## Accessory pan kit

- For use with 30" and 27" warming drawers. Set includes five commercial pans that are 4" deep. Each pan includes a stainless steel lid.

(Models: JTD910/915 and JKD910/915)

**JXPN1**

**3-A011**



## Demonstration cord kits (120 volt)

### Built-in wall ovens and drop-in ranges

- For use with 30", 27" and 24" single/double wall ovens and drop-in ranges with electronic controls. Provides power to the controls, convection fan, and lights, but will not energize heating elements. Kit contains one cord, wire nuts, electrical tape and instructions.

**Pub. No. 3-A011**

**3-A029**



### Free-standing and slide-in electric ranges

- For use with 30" free-standing electric and slide-in electric ranges with electronic controls. Provides power to the controls, convection fan, and lights, but will not energize heating elements. Kit contains one cord and instructions.

**Pub. No. 3-A029**

**3-A050**



### Electronic cooktops

- Provides power to all controls, but will not energize heating elements. Kit contains one cord, wire nuts, electrical tape and instructions.

For use with JP968 and JP938 only.

**Pub. No. 3-A050**

# Miscellaneous



## Gas range drip pans

- Optional accessories for standard burner and sealed burner gas ranges

(Models: JGBC20, JGBS20, JGBS17, JGBS07, JGBS04 and JGBS03)

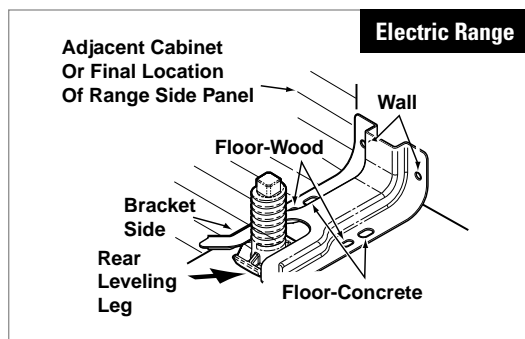
**WB35K10001**—Black  
**WB35K10002**—Chrome

(Model: JGBP24)

**WB34K10010**—Left Black  
**WB34K10020**—Right Black  
**WB34K10012**—Left Chrome  
**WB34K10040**—Right Chrome

(Model: JGBP28)

**WB32K10009**—Left Black  
**WB32K10001**—Right Black



## Anti-tip brackets

### Electric range

- For use with free-standing electric ranges.

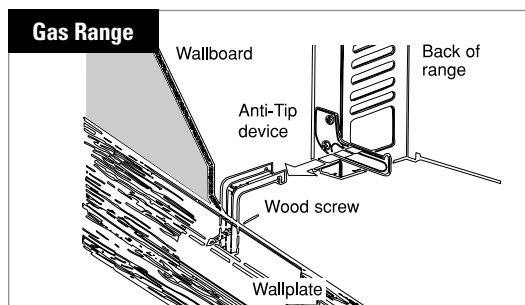
(Models: JBP95/90/82/80/69/68/66/64/61/60/48/35/30/26/24/21 and JBS27/26/07/05/03)

**Part No. 164D3799P002**

- For use with Hotpoint® free-standing electric ranges.

(Models: RB798/787/757/753/536/526/525 and RA524/520)

**Part No. WB02K10020**



### Gas range

- For use with free-standing gas ranges.

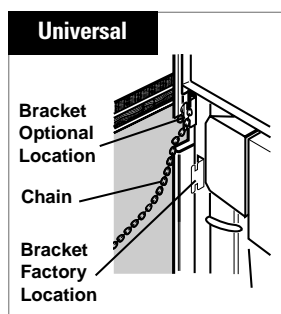
(Models: JGB920/910, J2B900 and JGBP90/86/85/79/35/30/28/26/24 and JGBS23/22/20/17/07/05/04/03 and JGBC23/22/20/17/07/03)

**Part No. 205C1714P001**

- For use with Hotpoint free-standing gas ranges.

(Models: RGB845/745/535/533/532/528/526/524/508 and RGA524/520)

**Part No. WB02K0020**



All GE ranges are equipped with an anti-tip device. The installation of this device is an important, required step in the installation of the range.

### Universal anti-tip kit

- If the kit packed with the range is lost or the installation location makes using that kit impossible, this kit can be used with any gas or electric free-standing range, or any gas or electric slide-in range.

**Part No. WB2X7909**

### **Slide-In Downdraft Range Accessories – For use with JSP69 only**

JXGR63B	Radiant module for slide-in downdraft range
JXGC53B	Coil module for slide-in downdraft range – Black
JXGC53W	Coil module for slide-in downdraft range – White
JXGL90	Griddle accessory for slide-in downdraft range
JXGG50	Grill module for slide-in downdraft range

### **Cooktop Accessories**

JXLP56	LP conversion kit for JGP656
JXCK89	Optional accessory kit for JP385 and JP389 downdraft cooktops only, includes junction box and conduit

### **Ventilation Accessories**

WB02X10710	Removable grease filter – 36" High-performance hoods – JV666C, JV665C
WB02X10706	Removable grease filter – 36" Performance hoods – JV566C, JV565C
WB02X10708	Removable charcoal filter – 36" Performance hoods – JV566C, JV565C
WB02X10713	Removable grease filter – 30" High-performance hoods – JV636C, JV635C
WB02X10709	Removable grease filter – 30" Performance hoods – JV536C, JV535C
WB02X10707	Removable charcoal filter – 30" Performance hoods – JV536C, JV535C
WB02X9381	Removable grease filter – 30" Standard/deluxe hoods – JV347X, JV327X, JV337X, JN327X
WB02X10700	Removable charcoal filter – 30" Standard/deluxe hoods – JV347X, JV327X, JV337X, JN327X

### **Miscellaneous Accessories**

ZXD30B	Wood panel kit allows for the installation of a custom wood panel on 30" warming drawers
ZXD27B	Wood panel kit allows for the installation of a custom wood panel on 27" warming drawers
WX10X300	CERAMA BRYTE® cleaning cream for all cooking products with ceramic glass
WX10X0302	CERAMA BRYTE cooktop scraper for all cooking products with ceramic glass
WB64X5027	CERAMA BRYTE cleaning cream and scraper for all cooking products with ceramic glass
WX10X350	CERAMA BRYTE cleaning pads for all cooking products with ceramic glass





## ***GE Appliances***

*General Electric Company  
Louisville, Kentucky 40225  
GEAppliances.com*

GE has a policy of continuous improvement of its products and reserves the right to change materials and specifications without notice.

© 2002 General Electric Company  
Pub. No. 3-X092 PC31538