

4.5 cu. ft. Ultra Large Capacity Top Load Washer with Impeller & TurboDrum™ Technology

- 4.5 cu. ft. Capacity
- SlamProof™ Lid
- True Balance® Anti-Vibration System
- Smart Rinse Jet Spray System
- NeveRust® Stainless Steel Drum



AVAILABLE COLORS



SUMMARY	
Type	Top Load Washer
Capacity	4.5 cu.ft
Matching Electric Dryer	DLE7010W
Color	White (W)

WASH PROGRAMS	
No. of Programs	8
Wash Programs	Normal, Heavy Duty, Deep Wash, Waterproof, Bedding, Delicates, Speed Wash, Tub Clean
No. of Options	9
Options	Soak, Extra Rinse, Signal, Delay Wash, Control Lock, Water Plus, Cold Wash, Rinse+Spin, Spin Only

WASH DETAILS	
No. of Wash/Rinse Temps	3
Wash/ Rinse Temps	Hot, Warm, Cold
No. of Spin Speed	3
Spin Speeds	High, Medium, Low
Water Levels	Load Sensing
No. of Soil Levels	3

APPERANCE	
Control & Display	Electronic Control Panel with LED Display
Touch Buttons	Yes
Dial-A-Cycle®	Yes

FABRIC CARE FEATURES	
TurboWash3D® Technology	No
TurboWash®	No
Steam Technology	No
Sanitary Cycle (Steam)	No
Allergiene® Cycle	No
Smart Rinse Jet Spray System	Yes
Cold Wash Option	Yes

CONVENIENCE FEATURES	
SlamProof™ Lid	Yes
True Balance® Anti-Vibration System	Yes
Smart Diagnosis	Yes
3-Tray Dispenser	Yes
LoadSense	Yes
Status Indicator(s)	Yes
End of Cycle Signal	Yes
Control Lock	Yes
Auto Suds Removal	Yes
Forced Drain System	Yes
Add Garment Indicator	Yes
Internal Water Heater	No
Leveling Legs	Yes

SMART FEATURES (ThinQ® TECHNOLOGY)	
Smart Diagnosis (v3.0)	Yes
NFC Tag On	No
Wi-Fi	No
ThinQ Care (Remote Start/Cycle Monitor)	No
Energy Monitoring	No

MOTOR	
Motor Type	Inverter Direct Drive Motor
Max RPM	800
Axis	Vertical

MATERIALS AND FINISHES	
NeveRust® Stainless Steel Drum	Yes
NeveRust® Stainless Steel Washplate	No
Cabinet	Painted Steel
All Available Colors	White (W)
Lid	White - Transparent Glass

ENERGY	
ENERGY STAR®Certified	Yes
IMEF	2.06
IWF	4.3

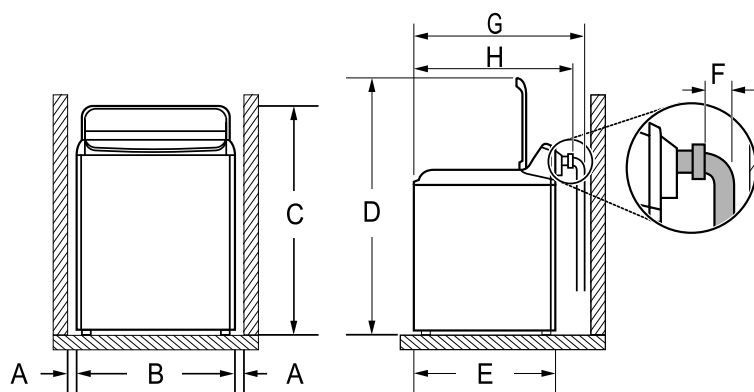
POWER SOURCE	
Ratings	CSA Listed
Electrical Requirements	120 V, 60 Hz, 5A
Plug	Included
Plug Type	3 Prong

DIMENSIONS	
Product (WxHxD)	27" x 44 1/2" x 28 3/8" (57 1/4" H with lid open)
Carton (WxHxD)	29 5/8" x 46 3/8" x 31 3/8"
Weight (Product)	124 lbs.
Weight (Carton)	143 lbs.

LIMITED WARRANTY	
Parts & Labor	1 Year
Drum	3 Years
Direct Drive Motor	10 Years

UPC CODES	
WT7010CW	048231350198

DIMENSION / CLEARANCES



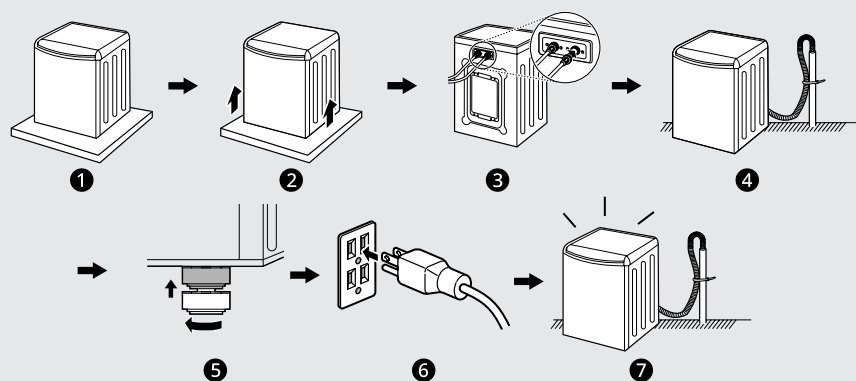
DIMENSIONS

A	1" (2.5cm)
B	27" (68.6cm)
C	44 1/2" (113cm)
D	57 1/4" (145.3cm)
E	26 3/4" (68cm)
F	3 1/2" (9cm)
G	32" (81.1cm)
H	28 3/8" (72.1cm)

Floor Installation

To ensure sufficient clearance for water inlet hoses, drain hose and airflow, allow minimum clearances of at least 1 inch (2.5 cm) at the sides and 4 inches (10 cm) behind the washer. Be sure to allow for wall, door, or floor moldings that may increase the required clearances. Minimum vertical space from floor to overhead shelves, cabinets, ceilings, etc., is 58 inches (147cm).

INSTALLATION OVERVIEW



- 1 Choosing the Proper Location
- 2 Unpacking and Removing Shipping Material
- 3 Connecting the Water Inlet Hoses
- 4 Connecting the Drain Hose
- 5 Leveling the Washer
- 6 Connecting to the Power Supply
- 7 Final Installation Check

CONNECTING THE WATER INLET HOSE

- Check the fittings and seals. Inspect the threaded fitting on each hose and make sure there is a rubber seal ❶ in place in both ends of each hose to prevent leaking.
- Connect the water inlet hoses to the hot and cold water faucets tightly by hand and then tighten another 2/3 turn with pliers.
- Connect the blue hose to the cold water faucet and the red hose to the hot water faucet.

• After the hoses are connected, turn on the water faucets and flush out any foreign substances such as dirt, sand, or sawdust. Foreign substances can damage washer inlets and lead to leakage.

• Let the water drain into a bucket, and check the water temperature to make sure you've connected the hoses to the correct faucets.

• Attach the inlet hoses to the back of the washer. Attach the hot water inlet hose to the hot water inlet on the back of the washer. Attach the cold water inlet hose to the cold water inlet on the back of the washer.

• Tighten the fittings securely. Turn on both faucets all the way and check for leaks at both ends of the hoses. • Connect the blue hose to the cold water faucet and the red hose to the hot water faucet.

