

WARNING

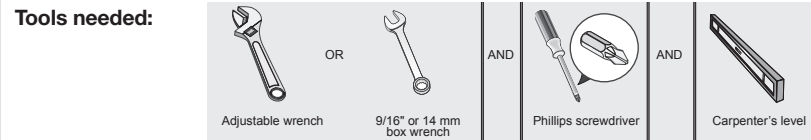
- Failure to disconnect from power source before stacking could result in personal injury or even death.
- Improper installation of dryer venting could result in personal injury or damage to property.
- To avoid back or other injury, have more than one person move or lift the washer or dryer.
- Do not stack a dryer on top of washer already installed on pedestal.

1 Materials and Tools Needed for Installation:

- Kit components:**
 A 2 Front brackets
 B 2 Rear brackets
- Screw Kit Components**
 C 14 #10 (16 x .500) screws

IMPORTANT

Total weight **IN** closed drawer or combination of **IN** and **ON TOP OF** open drawer should not exceed 65 lb. (29.5 kg).



Pedestal Bracket Kit: P/N 5304523385
* Included with pedestal

2 Prepare Appliance For Mounting

1. If washer or dryer is new and has not been installed yet, skip to step 4.
2. If dryer is already installed, disconnect dryer from electrical and gas connections and exhaust venting. On models with Steam Option, turn off cold water supply and disconnect water supply hose to dryer.
3. If washer is already installed, disconnect washer from electrical connection. Turn off hot and cold water supply and disconnect hot and cold water supply hoses from water supply outlets. Disconnect drain hose from drain pipe.
4. Protect floor and unit with cardboard or rug and carefully lay the appliance on its **LEFT** and **screw each leg completely into the base.**

NOTE

Due to higher center of gravity of appliance on pedestals, some side-to-side rocking is normal during operation. Vibration can be minimized by assuring appliance is installed properly, including being level and solid on all four (4) legs by following these directions.

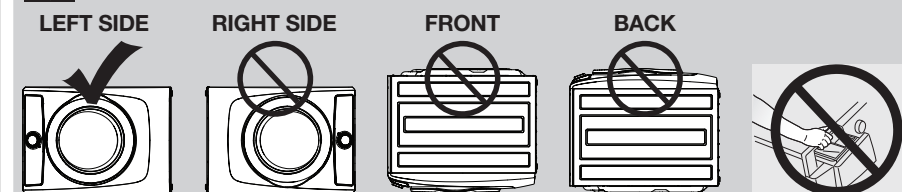
IMPORTANT

If feet are not completely screwed in, mounting holes in appliance will not align to mounting holes in brackets.

CAUTION

EXCESSIVE WEIGHT HAZARD
To avoid back or other injury, have more than one person move or lift the appliance.

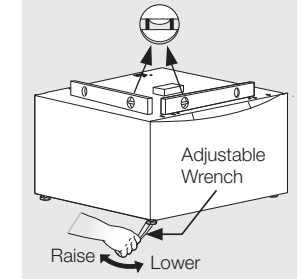
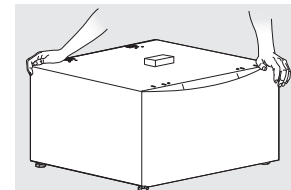
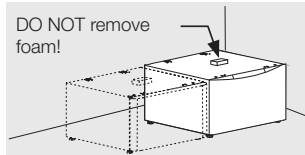
IMPORTANT



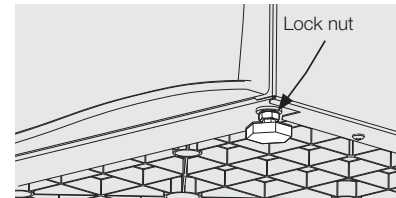
TURN ON TO LEFT SIDE ONLY. DO NOT use open dispenser drawer of washer or dispenser cavity as hand-hold location when tipping washer on its side. Serious damage could occur to your washer.

3 Prepare Pedestal Before Mounting

1. Locate pedestal to within a few inches of its final location.
2. Level the pedestal front-to-back and side-to-side by adjusting each leveling leg. **Keep leg extension to a minimum.**
3. Rock the pedestal from corner-to-corner to check for stability. Repeat leveling and rocking until all four (4) feet are sturdy on the floor and pedestal is level.



4. Without turning the rubber foot, lock each pedestal leg in place by tightening its lock nut tight against the pedestal base.



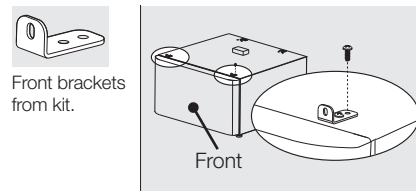
NOTE

Allow for approximately 5 in. (12.5 cm) behind the pedestal for clearance of back of washer or dryer to the wall. Allow an additional 3/4 in. (2 cm) for water inlet on Steam Model Dryers and additional space if venting dryer upward or downward.

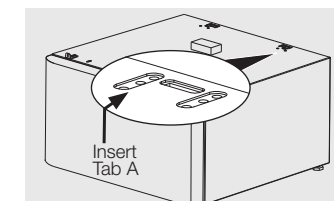
4 Attach Mounting Brackets

Attach front mounting brackets

Attach each front bracket to front two holes with 2 screws.



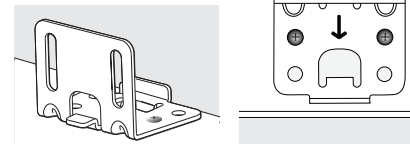
Attach the rear brackets to the area shown below, inserting tab A into the long center slot.



1. Determine your appliance type (washer or dryer).
2. Orient rear brackets for your particular model.
3. Attach each bracket with 2 screws through the holes that line up on pedestal.

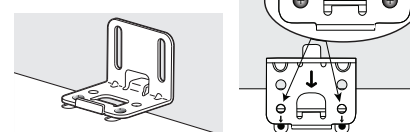
Washer:

Tab A into center slot with arrow pointing to back.



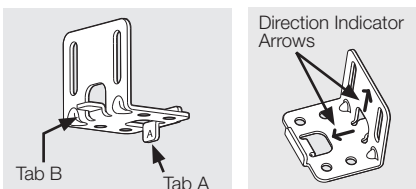
Dryer:

Tab A into center slot with arrow pointing to front.



Attach rear mounting brackets

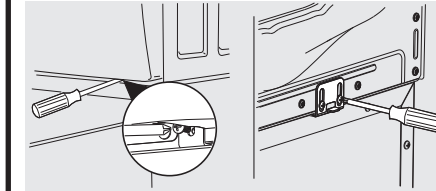
Each rear bracket has tabs marked "A" and "B" and 2 arrows indicating bracket direction when mounted on the pedestal.



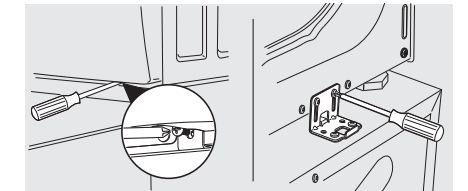
5 Attach Pedestal to Appliance

1. Turn pedestal on its **LEFT** side to match orientation to appliance.
2. Slide pedestal up to appliance and line up holes in mounting brackets with holes in appliance base.
3. Attach rear and front brackets to appliance base with supplied screws into aligning holes - one in each front bracket and two in each rear bracket.

Washer



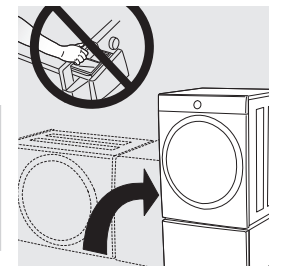
Dryer



4. Using more than one person, carefully return appliance and pedestal to upright position.
5. After returning appliance upright, loosen each mounting screw going into appliance base. Allow the appliance to settle in the brackets and retighten each mounting screw.

NOTE

There may be slight resistance BEFORE screw is completely seated. Make sure screw is completely tightened before running appliance. A loose connection can lead to vibration noise.



6 Installing or Re-installing Appliance

Washer on pedestal:

1. Slide washer/pedestal into place.
2. Check for levelness and rock all four (4) legs again. Repeat until level and solid.
3. Refer to Washer Installation Instructions for complete details on installing water, drain, or electrical.

Dryer on pedestal:

1. Slide dryer/pedestal into place.
2. Check for levelness and rock all four (4) legs again. Repeat until level and solid.
3. Refer to Dryer Installation Instructions for complete details on installing electrical, gas, or exhaust venting.

7 Warranty and Registration

Warranty

Your pedestal is covered by a two year limited warranty. For two years from your original date of purchase, Electrolux will repair or replace any parts of this pedestal that prove to be defective in materials or workmanship when such appliance is installed, used, and maintained in accordance with the provided instructions.

Exclusions

This warranty does not cover the following:

- Service calls which do not involve malfunction or defects in materials or workmanship, or for appliances not in ordinary household use or used other than in accordance with the provided instructions.
- Any Labor or in-home service costs.
- Damages to the finish of appliance or home incurred during transportation or installation, including but not limited to floors, cabinets, walls, etc.
- Damages caused by: services performed by unauthorized service companies; use of parts other than genuine Electrolux parts or parts obtained from persons other than authorized service companies; or external causes such as abuse, misuse, inadequate power supply, accidents, fires, or acts of God.

If You Need Service

Keep your receipt, delivery slip, or some other appropriate payment record to establish the warranty period should service be required. Service under this warranty must be obtained by contacting Electrolux at the addresses or phone numbers listed in your Use and Care manual.

This warranty only applies in the USA, Puerto Rico and Canada. In the USA and Puerto Rico, your appliance is warranted by Electrolux Major Appliances North America, a division of Electrolux Home Products, Inc. In Canada, your appliance is warranted by Electrolux Canada Corp. Electrolux authorizes no person to change or add to any obligations under this warranty. Obligations for service and parts under this warranty must be performed by Electrolux or an authorized service company. Product features or specifications as described or illustrated are subject to change without notice.

Product Record

In the space below, record the date of purchase and model number of the product.

Model No.: _____ Date of Purchase: _____

Save these instructions and your sales receipt for future reference.