



OWNER'S MANUAL

Portable Bluetooth Speaker

Please read this manual carefully before operating your set and retain it for future reference.

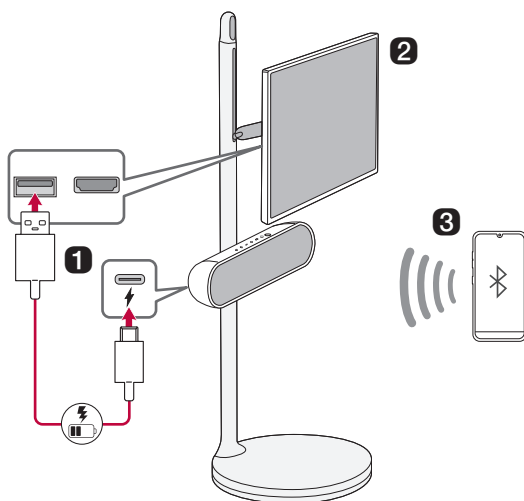
MODEL

XT7S

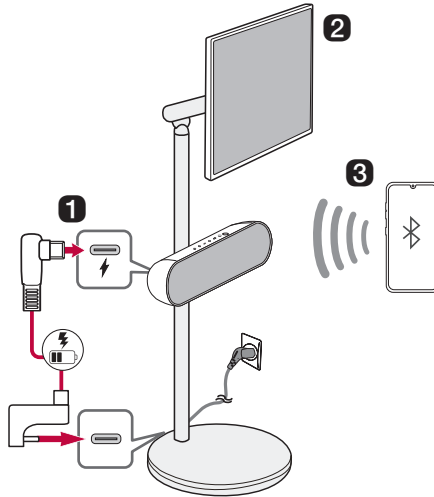
Portable Bluetooth Speaker Quick Guide

| Connecting and Using the Speaker

LG StanbyME (27ART10)



LG StanbyME 2 (27LX6T)



1 Charge the speaker before using it by opening the rear cover and connect the speaker to the USB port on the StanbyME by the USB cable.

ⓘ You can charge the speaker without the StanbyME by using your own AC adapter for charging.

- **LG StanbyME (27ART10)**

ⓘ The speaker can be charged while the StanbyME is on.

ⓘ If the speaker is connected to the StanbyME and powered by the battery, the usage time of the StanbyME may be shortened. For continuous use, connect the power to the StanbyME.


ⓘ When connecting the speaker to the StanbyME, position the StanbyME monitor horizontally.

- **LG StanbyME 2 (27LX6T)**


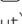


ⓘ To charge the speaker, you must connect the StanbyME 2 to a power source.

2 Connect the speaker to the StanbyME via Bluetooth (→ See “Connecting the StanbyME to the Speaker via Bluetooth” on page 22.)






• Connect automatically (Initial connection)

- 1 Turn on the StanbyME.
- 2 Press the **Power**  button on the speaker to turn it on.
- 3 The StanbyME finds and connects to this speaker so you can hear the StanbyME sound.

• Connect manually

- 1 Press the **Power**  button on the speaker to turn it on. **Bluetooth** LED blinks. If the LED is not blinking press **Bluetooth**  button.
- 2 Press  →  (Sound Out) on the StanbyME and select [Bluetooth device] or [Bluetooth device+Internal speaker] and then [Device list].
 - If you choose [Bluetooth device], find and select “LG XT7S(XX)” on the Connectable Devices list.
 - If you choose [Bluetooth device+Internal speaker], select [Connect One Speaker]. Then find and select “LG XT7S(XX)” on the Connectable Devices list.
- 3 Once the StanbyME is connected via **Bluetooth**, the **Bluetooth** LED will turn on and you can hear the StanbyME sound through the speaker.

3 Connect the speaker to a smartphone via Bluetooth (→ See “Connecting Smartphone to the Speaker via Bluetooth” on page 24.)

- 1 Turn off the StanbyME. Press the **Power**  button on the speaker to turn it on. **Bluetooth** LED blinks. If the LED is not blinking press **Bluetooth**  button.
- 2 Tap the **Settings**  button on the smartphone and select **Bluetooth**. Turn on the **Bluetooth** function. (Off  > On )
- 3 Find “LG XT7S(XX)” on the device list on the smartphone and connect to it. Once the smartphone is connected via **Bluetooth**, the **Bluetooth** LED will turn on.
- 4 On the smartphone, play a music of your choice.

4 Connecting the LG XBOOM App (→ See “Installing app” on page 29.)

- 1 Find the **LG XBOOM app** on the Google Play or App Store and install it on your smartphone.
- 2 Run the **LG XBOOM app** and use more features. (EQ, Lighting, Sleep Timer, Setting etc.)

Table of Contents

Portable Bluetooth Speaker Quick Guide

- 2 Connecting and Using the Speaker

Installation

- 6 Checking before installing with the StanbyME
- 7 Installation - LG StanbyME (27ART10)
- 11 Installation - LG StanbyME 2 (27LX6T)

Exploring the Product

- 15 Top
- 17 Back

Charge

- 18 Charging the Battery
- 21 Checking Battery Status

Connecting to Bluetooth

- 22 Connecting the StanbyME to the Speaker via Bluetooth
- 24 Connecting Smartphone to the Speaker via Bluetooth
- 27 Connecting Two Bluetooth Devices to the Speaker

Connecting to the LG XBOOM App

- 29 Installing app

Additional Functions

- 31 Setting Sound Effects
- 32 Using WOW Orchestra with LG StanbyME
- 32 Resetting the Speaker
- 33 Resetting Bluetooth
- 33 Using Auto Power Management
- 34 Using Auto power - on.
- 34 Voice feedback function

Safety Precautions

- 35 Safety and Regulatory
- 38 Prevention of product misuse

Before Reporting Product Malfunction

- 42 Troubleshooting

Appendix

- 44 Specifications
- 45 Registered Trademarks and Licenses
- 46 Handling the Product

Installation

Checking before installing with the StanbyME

You can install this speaker with the LG StanbyME.

Follow the instructions below when installing the speaker to the StanbyME.

Please check the following first.

- Please note the following when you install the speaker to the StanbyME. Product damage or injury may occur during the process.
 - Secure the speaker firmly to the StanbyME using the fixing screw so that it does not fall off.
 - Ensure it is out of the reach of children. Pulling or shaking the StanbyME installed with the speaker may cause it to fall.

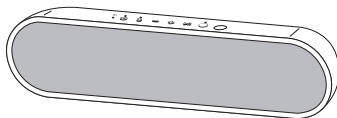
CAUTION

- Prevent children from hanging on the StanbyME and the speaker or climbing it.
 - Otherwise, the StanbyME installed with the speaker may fall over, causing injury or death.
 - Do not install the product in an unstable location, a location with vibration, or a location that does not support the product safely, such as on top of a shaky shelf or on a slope.
 - Otherwise, the product may fall or turn over, causing injury or product malfunction.
 - Put the product on a flat hard surface.
 - Otherwise, the product may fall over, causing injury.
 - Make sure that you do not damage the exterior of the products when moving or handling the StanbyME installed with the speaker.
 - If there is any dirt or fingerprint on the product exterior, only wipe the area with the dirt or fingerprint lightly.
 - Do not apply excessive force when removing the dirt. Excessive force may produce scratches or discoloration of the product exterior.
 - When assembling the speaker to the bracket, make sure that all screws are engaged to the end. (If not, the speaker may fall down after it was installed.) Do not tighten the screws with excessive force. Otherwise, the screws may become loose or fall out due to the wear and tear of the screwed parts.
-

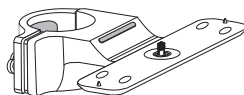
| Installation - LG StanbyME (27ART10)

Components for installing with the StanbyME

Speaker



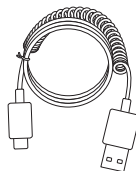
Cradle



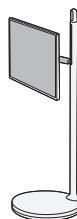
Cable holder (2 EA)



USB cable

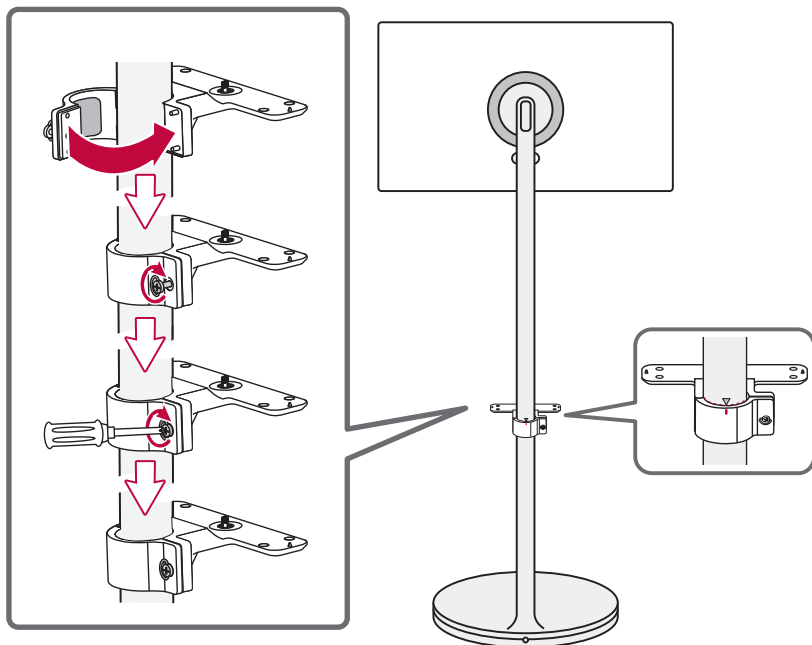


LG StanbyME (27ART10) (sold separately)

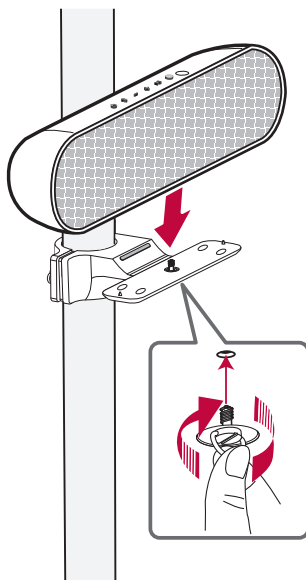


Affixing the Speaker to the StanbyME

- 1** When installing it, align the center dot on the cradle to the ▼ symbol on the StanbyME stand.




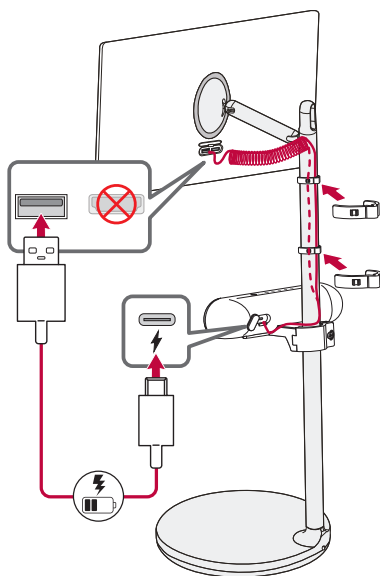
- 2** Put the speaker on the cradle and turn the screw under the cradle as if pushing it upward to secure the speaker.



⚠ CAUTION

Be careful not to get your hands caught or break your nails when assembling the screws.

- 3 Charge the battery to connect the speaker to StanbyME using the provided USB cable. Open the back cover of the speaker and then connect the USB (Type C) cable to the  (DC IN) port and connect the other end of the USB cable to the USB port of StanbyME. And use the cable holders to organize the cable.



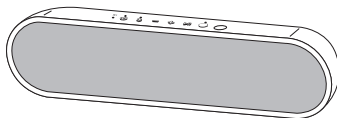
✓ **Note**

Be sure to use the provided USB cable to connect. Using a different cable may cause malfunction.

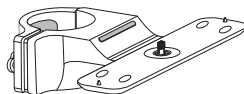
Installation - LG StanbyME 2 (27LX6T)

Components for installing with the StanbyME

Speaker



Cradle



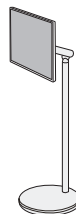
Cable holder (2 EA)



USB cable

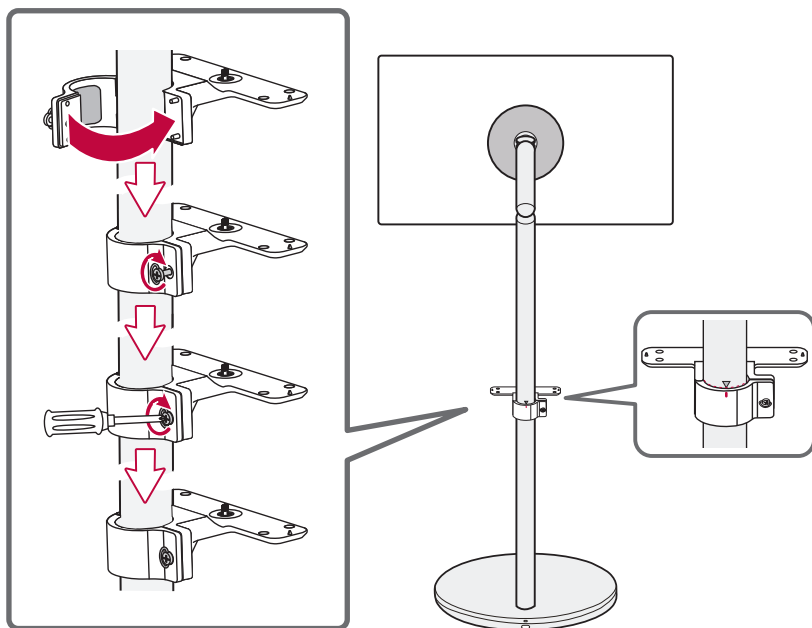


LG StanbyME 2 (27LX6T) (sold separately)

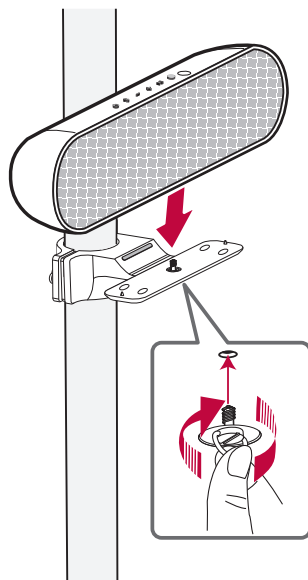


Affixing the Speaker to the StanbyME

- 1** When installing it, align the center dot on the cradle to the ▼ symbol on the StanbyME stand.



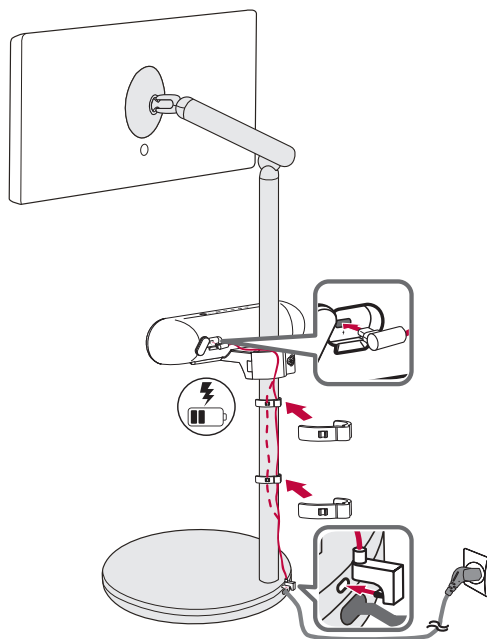
- 2** Put the speaker on the cradle and turn the screw under the cradle as if pushing it upward to secure the speaker.



⚠ CAUTION

Be careful not to get your hands caught or break your nails when assembling the screws.

- 3** Charge the battery to connect the speaker to StanbyME using the provided USB cable. Open the back cover of the speaker and then connect the USB (Type C) cable to the  (DC IN) port and connect the other end of the USB cable to the USB port of StanbyME. And use the cable holders to organize the cable.

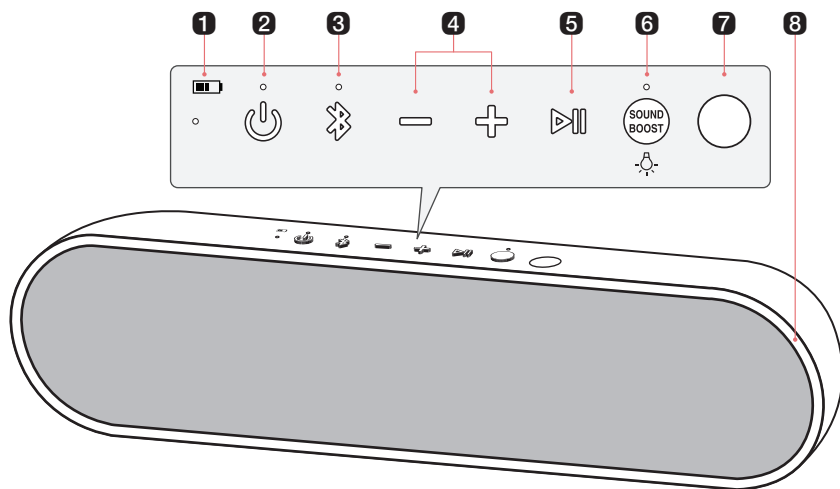


✓ Note

Be sure to use the provided USB cable to connect. Using a different cable may cause malfunction.


Exploring the Product

Top



1 Battery LED

Please check the battery charging level and battery status. (→ See “Checking Battery Status” on page 21.)

- Press and hold the **Power**  button for 2 seconds to check the battery level while the power or the speaker is on.

2 Power

Turns the speaker on or off.

Power LED

Indicates the power status.

3 Bluetooth

You can change the **Bluetooth** settings.

- Connecting an additional smartphone: Press the button. (→ See “Connecting Two Bluetooth Devices to the Speaker” on page 27.)
- Resetting **Bluetooth**: Press and hold the button for 7 seconds. (→ See “Resetting Bluetooth” on page 33.)

Bluetooth LED

Indicates the **Bluetooth** connection status.

-  : Blinks in white / Ready for **Bluetooth** device connection.
-  : Turns on in white / Connected to a **Bluetooth** device.

4 Volume

This adjusts the speaker volume.

5 Play/Pause

While **Bluetooth** is connected, press the button to operate the **Bluetooth** device.

- Play/Pause: Press the button.
- Moving to the next music: Press the button twice quickly.
- Moving to the previous music: Press the button three times quickly.

6 SOUND BOOST

Changes sound effect. (→ See "Setting Sound Effects" on page 31)

SOUND BOOST LED

You can check the selected sound effect.

Lighting

Press and hold the button to turn on or off the lighting.

7 IR transmitter

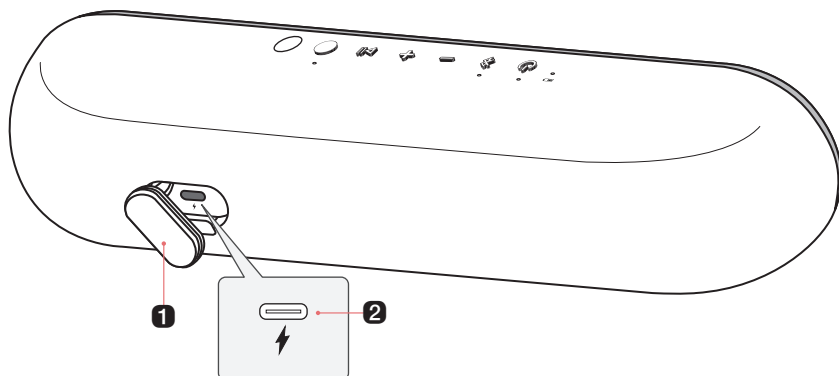
This is used when connecting the StanbyME and the speaker automatically.

Place the speaker with the IR transmitter facing the StanbyME. If the IR transmitter is covered, the connection may not be smooth.

8 Lighting LED

You can change the effect of Lighting and turn it on or off in the **LG XBOOM app**.

Back



1 Back Cover

Make sure to fully close the back cover after use.

- Ingress Protection: IPX5
 - Protected against low pressure jets of water from all directions.

2 (DC IN)

Plug in a USB (C-Type) cable to charge the speaker battery.

CAUTION

Be careful not to drop the speaker. Mechanical shock may cause deterioration of water-resistant performance.

Charge


| Charging the Battery

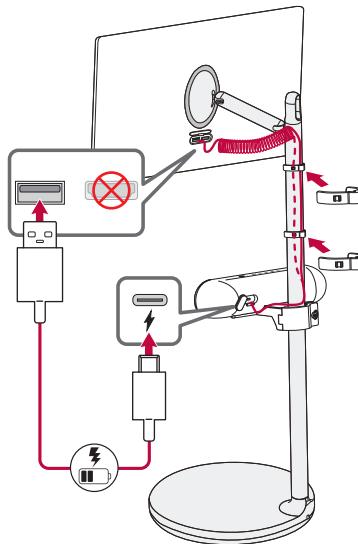
The speaker has a built-in battery. Make sure to charge the battery sufficiently before use.

✔ Note

- It takes about 4 hours to fully charge the speaker. The charging time may differ depending on the battery status or the speaker operation status.
 - Once the battery is fully charged, you can use the speaker for about 16 hours.
 - Operation time may vary depending on the battery or operation status.
-

Charging the speaker by connecting it to the StanbyME

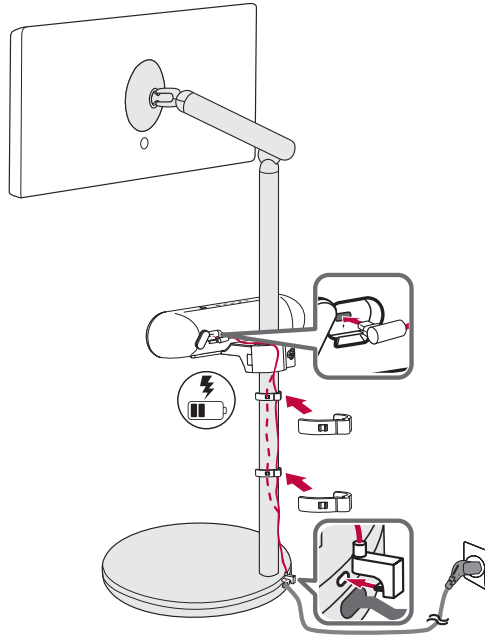
- 1 Open the back cover and connect the provided USB cable (C-type) to  **(DC IN)** port of the speaker.
- 2 Connect the other end of the USB cable to the USB port on the StanbyME.



✔ **Note**

• **LG StanbyME (27ART10)**

- If the speaker is connected to the StanbyME and powered by the battery, the usage time of the StanbyME may be shortened. For continuous use, connect the power to the StanbyME.
 - Even if you connect the speaker to the StanbyME's HDMI port by using an HDMI to USB cable, the speaker will not charge because the port is the HDMI input port.
-




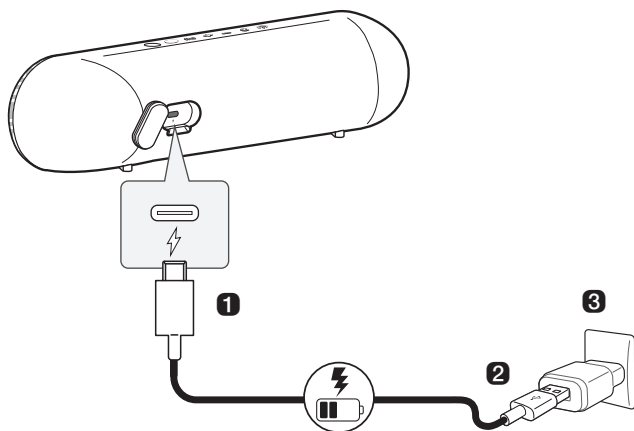
✔ **Note**

• **LG StanbyME 2 (27LX6T)**

- To charge the speaker, you must connect the StanbyME 2 to a power source.
-

Charging the speaker using an AC adapter

- 1 Open the back cover and connect the USB cable (C-type) to  (DC IN) port of the speaker.
- 2 Connect the other end of the USB cable to the AC adapter (not provided).
- 3 Plug the AC adapter into an AC outlet.





CAUTION

AC adapter is not supplied. It is recommended that you use the 5 V AC adapter approved by LG Electronics Inc. (more than 1.2 A) with this speaker because of danger of explosion. If you do not use the recommended adapter, charging is unavailable or charging time may differ.

Checking Battery Status

Charging Status


Once the battery charging starts, the battery LED indicates the charging status.




LED	LED Status / Battery Status
	It is green. / Charging is complete.
	It is red. / Charging is in progress.

✔ **Note**

- Playing tracks while charging may lengthen the charging time.
- When the speaker's battery is fully charged with the power off, the battery LED lights up green for 15 seconds and then off.

Use Status

When the product is turned on, the battery status is displayed on the battery LED for 3 seconds. When you turn on the speaker or press and hold the **Power**  button for 2 seconds, the battery LED is turned on for 3 seconds according to the battery status.

LED	LED Status / Battery Status
	Turns on in green. / The battery level is above 70 %.
	Turns on in amber. / The battery level is between 10~70 %.
	It blinks red continuously and you can hear a notification sound once. / The battery level is below 10 %, and the battery needs to be charged.

✔ **Note**

The battery status cannot be checked while charging.

Connecting to Bluetooth

Connecting the StanbyME to the Speaker via Bluetooth

You can enjoy optimized sound to connect the speaker to the StanbyME.

Please check the following first.

- The speaker's **Bluetooth** specifications are as follows:
 - **Bluetooth** version: 5.1
 - **Bluetooth** codec: SBC, AAC
- You need to update the StanbyME's firmware to the latest version before connecting the speaker to the StanbyME. Refer to the StanbyME to check the StanbyME's firmware.

Connect automatically (Initial connection)



If you turn on the speaker while the StanbyME is on, the StanbyME will search for the speaker and connect to it.

If the connection fails, follow the steps below to connect manually.

Connect manually

- 1** Press the **Power**  button on the speaker to turn it on. **Bluetooth** LED blinks.



- 2 Press  →  (Sound Out) on the StanbyME and select [Bluetooth device] or [Bluetooth device+Internal speaker] and then [Device list].
- If you choose [Bluetooth device], find and select "LG XT7S(XX)" on the Connectable Devices list.
 - If you choose [Bluetooth device+Internal speaker], select [Connect One Speaker]. Then find and select "LG XT7S(XX)" on the Connectable Devices list.
- 3 Once the StanbyME is connected via **Bluetooth**, the **Bluetooth** LED will turn on with the sound.



✓ **Note**

- The sound out is set to [Use Multiple Speakers - **Bluetooth** Device + Internal Speaker] when connecting the speaker and the StanbyME for the first time.
 - If you connect the speaker to the StanbyME after you set the sound effect to [Custom] on the **LG XBOOM app**, the sound effect will be changed to [SOUND BOOST] for optimizing the sound.
-

Connecting Smartphone to the Speaker via Bluetooth

You can play tracks or run a music app on a **Bluetooth** device and enjoy the sounds through the speaker.

Please check the following first.

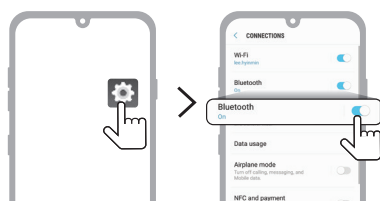
- The speaker's **Bluetooth** specifications are as follows:
 - **Bluetooth** version: 5.1
 - **Bluetooth** codec: SBC, AAC
- This product supports **Bluetooth** devices such as smartphones and laptops. How to connect the devices to the speaker may differ depending on device types and models. For information on how to connect the device, refer to the user manual of the external device to be connected.

Select the [**Bluetooth**] menu on the smartphone's **Settings** screen. The menu access method may differ depending on the smartphone manufacturer and model.

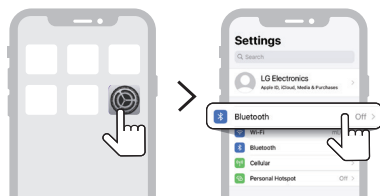
- 1 Turn off the StanbyME. Then press the **Power** (⏻) button on the speaker to turn it on. **Bluetooth** LED blinks.



- 2 Tap the **Setting** (⚙️ / ⚙️) button on your smartphone and select **Bluetooth**.



(Android Phone)



(iPhone)

3 Turn on the **Bluetooth** function. (Off  > On )

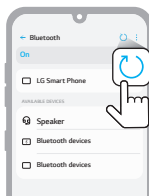
4 You will see a list of connectable devices on the smartphone screen. Find and tap "LG XT7S(XX)".



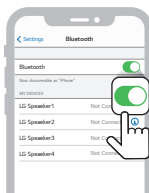
5 Once the speaker and the smartphone are connected via **Bluetooth**, **Bluetooth** LED will turn on with the sound.



6 If "LG XT7S(XX)" does not appear on the list, tap on the **Refresh**  icon on an Android phone or restart **Bluetooth** on an iPhone.

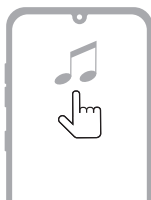


(Android Phone)



(iPhone)

- 7** Select and play a track on the smartphone.



✓ Note

- XX are the last two digits of the **Bluetooth** address. An example would be "LG XT7S(08)".
 - The closer the **Bluetooth** device is to the speaker, the better connection you will get.
 - If no **Bluetooth** device is connected to the speaker, the **Bluetooth** LED blink. Connect the device again.
 - Adjust the volume of the **Bluetooth** device to an appropriate level when using it.
 - When the product is charging, if you try to connect to the product via the **Bluetooth** device with a connection history, the product will automatically turn on and connect to the **Bluetooth** device. You can control this function in the **LG XBOOM app**. (→ See "Using Auto power - on." on page 34.)
 - When you turn on the speaker, even if the speaker is connected to the other device which is not to the StanbyME, the speaker will go into **Bluetooth** standby mode for 30 seconds so that you can easily connect it to the StanbyME.
-

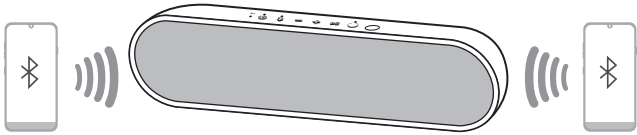
Connecting Two Bluetooth Devices to the Speaker

Pairing (Connecting) Multiple Phones

- 1 Connect the speaker and a smartphone first. (→ See "Connecting Smartphone to the Speaker via Bluetooth" on page 24.)
- 2 Press the **Bluetooth** button on the speaker. Then **Bluetooth** LED blinks with the sound. The speaker is changed to multi pairing mode.



- 3 Connect an additional smartphone to the speaker within 1 minute. (→ See "Connecting Smartphone to the Speaker via Bluetooth" on page 24.)



- 4 When two smartphones and the speaker are connected, the **Bluetooth** LED turns on.



✔ **Note**

- Up to two **Bluetooth** devices can be connected to the speaker at the same time. (two smartphones)
 - When two **Bluetooth** devices are connected at the same time, the speaker channels the sounds of only one of them. You need to stop the playback on the first device to play the sounds of the other one.
 - If you turn the speaker off and back on while two **Bluetooth** devices are connected, only the device connected later is automatically connected.
 - It is not recommended to play the speaker while the StanbyME and the smartphone are connected at the same time because it may occur audio delay or interruption depending on the connection environment.
 - You cannot connect two smartphones to the speaker while the StanbyME and a smartphone are connected. To connect two smartphones disconnect the StanbyME from the speaker.
-

Connecting to the LG XBOOM App

I Installing app

Use the various functions of the speaker on the **LG XBOOM app**.

To install the **LG XBOOM app**, scan the QR code with an app or install **LG XBOOM app** on the Google Play or App Store.

Please check the following first.

- The **LG XBOOM app** is available in the versions listed below.
 - Android OS: Version 6.0 or higher
 - iOS OS: Version 12.0 or higher
 - Minimum supported versions for each OS may change later.

Downloading with a QR code

- 1 Scan the QR code with a QR code scan app.
- 2 You will be directed to the page where you can download the **LG XBOOM app**. Tap the app to install it.



(Android Phone OS)



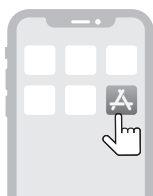
(iPhone OS)

Downloading in Google Play or App Store

- 1 Find the **LG XBOOM app** on the Google Play or App Store and install it on your smartphone.



(Android™ Phone)



(iPhone)


-
- 2 Connect the smartphone to the speaker via **Bluetooth**. (→ See "Connecting Smartphone to the Speaker via Bluetooth" on page 24.)
 - 3 Open the **LG XBOOM app** installed on the smartphone.
 - 4 Follow the instructions on the **LG XBOOM app**. Agree to the Terms of Service, notice windows, access settings, etc.
 - 5 Start using the various functions on the **LG XBOOM app**.

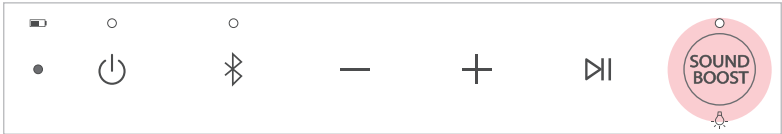
✓ Note



- The menu access method may differ depending on the smartphone manufacturer and OS.
 - Google, Android and Google Play are trademarks of Google LLC.
-

Additional Functions

| Setting Sound Effects

You can select a desired sound effect by using **SOUND BOOST**  button.





LED (● Off / ○ On)	Function / Description
	Standard / You can enjoy High-fidelity sound with balanced and natural.
	SOUND BOOST / You can enjoy the wide sound field and powerful sound.

- ✔ **Note**
- Because fine-tune sound to provide optimal high-quality sound, It might be a little difference between sound effect modes.
 - When the StanbyME is connected to the speaker, the StanbyME's sound effect is reflected on the speaker.

Using WOW Orchestra with LG StanbyME

The combination of the LG StanbyME speaker and StanbyME gives you the best listening experience to output sound simultaneously through both of them.

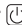

This function is automatically activated when the speaker is connected to the StanbyME and you can choose it on the sound out menu on the StanbyME:  →  → [Sound] → [Sound out] → [Use Multiple Speakers].

✓ Note


- It operates according to the audio codec supported by the StanbyME.
- The messages displayed on the StanbyME may differ depending on the model.
- Refer to the StanbyME's instruction manual for more details on settings.

Resetting the Speaker

You can reset the speaker when it operates improperly.


- 1 Press and hold the **Power**  and **SOUND BOOST**  buttons on the speaker for 7 seconds simultaneously. Then the speaker will turn off automatically.



- 2 Turn on by pressing the **Power**  button.

Resetting Bluetooth

Resetting **Bluetooth** initializes all the **Bluetooth** and speaker connections as well as the user settings.





- 1** Press and hold the **Bluetooth**  button on the speaker for 7 seconds. **Power** LED and **Bluetooth** LED will blink four times.




- 2** Connect to the speaker via **Bluetooth**. (→ See “Connecting the StanbyME to the Speaker via Bluetooth”, “Connecting Smartphone to the Speaker via Bluetooth” on page 22, 24.)

Using Auto Power Management

If there is no input signal or button operation, the speaker turns off automatically after 15 minutes. The Auto Power Management function can be enable or disable as shown below.

Function	How to Use
Enable	Press and hold Power  and Volume  buttons for 2 seconds simultaneously. <ul style="list-style-type: none">The Power LED will blink five times with beep sound.
Disable	Press and hold Power  and Volume  buttons for 2 seconds simultaneously. <ul style="list-style-type: none">The Power LED will blink five times with beep sound.

✓ Note



- You can enable or disable this function on the **LG XBOOM app**.
- If this function is disabled, the speaker turns off only when the **Power**  button is pressed or the battery is discharged.
- This function may not work depending on the status of the connected StanbyME (such as Home menu).

| Using Auto power - on.

You can easily use the speaker with your **Bluetooth** device.

Please check the following first.

- The speaker has a history of **Bluetooth** connection with the **Bluetooth** device.
- The speaker is charging and the power is off.

- 1 Tap the **Setting** button on your **Bluetooth** device and select **Bluetooth**.
- 2 Turn on the **Bluetooth** function. (Off  > On )
- 3 You will see a list of connectable devices on the **Bluetooth** device screen. Find and tap "LG XT7S(XX)".
- 4 The speaker power is turned on automatically. Then the **Bluetooth** device and the speaker are connected automatically.

✓ Note

- You can turn this function on and off with the **LG XBOOM app** only.
 - If there is a **Bluetooth** connection history between the StanbyME and speaker, the speaker will also turn on when the StanbyME is turned on.
 - While the speaker and StanbyME are connected via **Bluetooth**, the speaker will also turn off when the StanbyME is turned off.
-

| Voice feedback function

When you select a function or sound, the current status of the product is guided by voice. (English voice only.)

You can turn this function on and off with the **LG XBOOM app** only.

Safety Precautions

| Safety and Regulatory



CAUTION: TO REDUCE THE RISK OF ELECTRIC SHOCK DO NOT REMOVE COVER (OR BACK). NO USER-SERVICEABLE PARTS INSIDE. REFER SERVICING TO QUALIFIED SERVICE PERSONNEL.



This lightning flash with arrowhead symbol within an equilateral triangle is intended to alert the user to the presence of uninsulated dangerous voltage within the product's enclosure that may be of sufficient magnitude to constitute a risk of electric shock to persons.



The exclamation point within an equilateral triangle is intended to alert the user to the presence of important operating and maintenance (servicing) instructions in the literature accompanying the product.

WARNING:

- TO PREVENT FIRE OR ELECTRIC SHOCK HAZARD, DO NOT EXPOSE THIS PRODUCT TO RAIN OR MOISTURE.
- Do not install this equipment in a confined space such as a book case or similar unit.

CAUTION:

- Do not use high voltage products around this product. (ex. Electrical swatter) This product may malfunction due to electrical shock.
- No naked flame sources, such as lighted candles, should be placed on the apparatus.
- Do not block any ventilation openings. Install in accordance with the manufacturer's instructions. Slots and openings in the cabinet are provided for ventilation and to ensure reliable operation of the product and to protect it from over heating. The openings should never be blocked by placing the product on a bed, sofa, rug or other similar surface. This product shall not be placed in a built-in installation such as a bookcase or rack unless proper ventilation is provided or the manufacturer's instruction has been adhered to.
- The apparatus should not be exposed to water (dripping or splashing) and no objects filled with liquids, such as vases, should be placed on the apparatus.
- For safety marking information including product identification and supply ratings, please refer to the main label on the bottom or the other surface of the product.

CAUTION concerning the Power Cord

Install this apparatus in a location where the power plug can be easily unplugged and plugged in. If there is a fire or problem with this apparatus, unplug it quickly.

Check the specification page of this owner's manual to be certain of the current requirements.

Do not overload wall outlets. Overloaded wall outlets, loose or damaged wall outlets, extension cords, frayed power cords, or damaged or cracked wire insulation are dangerous. Any of these conditions could result in electric shock or fire. Periodically examine the cord of your device, and if its appearance indicates damage or deterioration, unplug it, discontinue use of the device, and have the cord replaced with an exact replacement part by an authorized service center.

Protect the power cord from physical or mechanical abuse, such as being twisted, kinked, pinched, closed in a door, or walked upon. Pay particular attention to plugs, wall outlets, and the point where the cord exits the device.

CAUTION when using this product in environments of low humidity

- It may cause static electricity in environments of low humidity.
- To prevent static electricity, it is recommended to touch metal objects before using this product.

For models using a battery

This device is equipped with a portable battery or accumulator.

CAUTION: Risk of fire or explosion if the battery is replaced by an incorrect type.

For models using a built-in battery

Do not store or transport at pressures lower than 11.6 kPa (0.116 bar) and at above 15,000 m (9.32 miles) altitude.

- Replacement of a battery with an incorrect type that can defeat a safeguard (for example, in the case of some lithium battery types);
- Disposal of a battery into fire or a hot oven, or mechanically crushing or cutting of a battery, that can result in an explosion;
- Leaving a battery in an extremely high temperature surrounding environment that can result in an explosion or the leakage of flammable liquid or gas;
- A battery subjected to extremely low air pressure that may result in an explosion or the leakage of flammable liquid or gas.

Symbols

~ : Alternating current (AC).

— : Direct current (DC).

⊞ : This is a class II equipment.

⏻ : Standby power state.

⏻ : The power is turned on.

⚡ : Danger voltage.

Prevention of product misuse

To prevent misuse of the product, please be sure to check the contents below.

Precautions for installing the product

- Do not install the product in an unstable or vibrating place, such as on a shaking shelf or inclined surface. Install the product on a firm and level surface.
 - Otherwise, the product may fall or tip over and cause injury.
 - If you install the product on an unstable surface, the product may not work properly.
- If you install the product on a piece of furniture or shelf, make sure that the bottom front of the product does not protrude. Always use a piece of furniture or shelf that fits the product size.
 - Otherwise, the product may lose its balance and fall, causing injury or product damage.
- Install the product in a safe place. Otherwise, a child may bump into an edge of the product and get injured.
- Install the product in a place free from electromagnetic interference for proper operation.
- If you install the product in a place that does not meet the general use conditions, an unexpected quality problem may arise. So, make sure that you contact the service center first before installing the product in such a place.
- Do not keep the product in a place where the temperature is too high (above 35 °C (95 °F)) or too low (below 5 °C (41 °F)) or a place with too much humidity.
- Avoid places exposed to direct sunlight or heat, e.g., near a heater. Do not use or keep flammable sprays or substances near the product.
 - Otherwise, there is a risk of explosion or fire.
- Do not install the product in a place with too much moisture, dust or soot.
 - Otherwise, it may cause a fire or electric shock.
- Do not install the product in a narrow space, such as inside a bookshelf, that does not ventilate well. Do not cover the product with a table cover or curtain.
 - Otherwise, it may increase the product temperature, causing a breakdown or fire.
- Connect the power plug of the product to a power outlet that is easily accessible.
 - When a fire or other problem occurs in the product, you must be able to remove the power plug quickly.
- Do not connect multiple products to one power outlet at the same time.
 - Otherwise, it may cause overheating, resulting in a fire.

Precautions for using the product

- Do not lift or move the product while it is operating.
 - Otherwise, it may cause a breakdown.
- When moving the product, pull out the power cord and all cables connected to the product.
 - Otherwise, it may cause a fire or electric shock.
- Stop using the product immediately if you notice smoke or a strange odor. In this case, turn off the power immediately, disconnect the power plug, and contact the service center.
 - Using the product in this state may result in a fire or electric shock.
- Do not insert metal objects such as coins and hairpins or flammable objects such as paper and matchsticks into the product. Make sure that you tell any children not to do so.
 - Otherwise, it may cause a breakdown.
- If a foreign substance is inserted into the product, disconnect the power plug and contact the service center.
- Do not put a heavy object on top of the product.
 - Otherwise, it may tip over or fall, causing injury.
- Make sure that a child does not hang on the product or get on it.
 - Otherwise, the product may tip over or fall, causing injury. Make sure that you tell any children not to do so.
- Remove the power plug during thunderstorms.
 - Otherwise, it may cause a fire.
- Do not place vessels with liquid, such as a vase, pot, cosmetics, or medicine, on top of the product.
 - Otherwise, it may result in a fire, electric shock, or injury due to its fall, etc.
- Make sure that you connect the power plug firmly. Do not use voltage other than the rated voltage indicated on the product.
 - An insecure connection may result in a fire.
- Do not insert a conductor, such as chopsticks, into the groove on the other side of the product while the power plug is connected to an outlet. Do not touch the power plug immediately after unplugging it from the outlet.
 - Otherwise, it may cause electric shock.
- Hold the power plug with dry hands.
 - Otherwise, it may cause electric shock.
- Do not move or push the product while holding a product cable such as a power cord.
 - The cable may get damaged and cause a breakdown or result in a fire or electric shock.
- When removing a cable plugged into the product, make sure that you hold the connector at the end of the cable. Do not hold the cable line.
 - Otherwise, it may result in an injury or the product may fall and cause a breakdown.
- Do not keep the product in a place exposed to heat, e.g., near a heater.
 - Otherwise, it may cause a fire or malfunction.

- Do not disassemble, repair, or modify the product.
 - Otherwise, it may cause a breakdown, resulting in a fire, electric shock, or injury.
- Keep plastic wraps out of reach of toddlers.
 - Otherwise, toddlers may choke on the plastic wraps.
- Do not drop an object on the product or make an impact on it. Keep the product away from places with severe vibrations or magnets.
- Do not damage, modify, bend, twist, or heat a power cord.
 - Otherwise, it can damage the power cord, resulting in a fire or electric shock.
- When you are not using the product for a prolonged period, such as when you are away from home, unplug the power cord from the power outlet.
 - If dust accumulates, it can cause heat, resulting in electric shock or fire due to a short circuit.
- Do not dispose of waste batteries together with regular waste. Dispose of them separately.
 - Otherwise, there is a risk of explosion or fire.
- Do not use high voltage products around this product. (ex. Electrical swatter)
 - This product may malfunction due to electrical shock.
- Do not touch the power plug immediately after unplugging it from the outlet.
 - Otherwise, it may cause electric shock.
- Connect the power plug to a grounded outlet or extension cord. (This does not apply to products without a ground.)
 - Otherwise, it may cause a breakdown or electric shock due to a short circuit.
- In the case of a product with a vent, keeping the product turned on for a prolonged period can result in the vent getting hot. Do not touch the vent when it is hot. The heat is not a fault of the product and does not cause any malfunction. So, you may use the product without worry.
- Do not damage the power cable, AC adapter, or power plug. Do not place a heavy object on top of the power cable or AC adapter.
 - Otherwise, it may cause a fire or electric shock.
- If dust, dirt, etc. is found on the power plug pins, an AC adapter, or a power outlet, wipe it completely.
 - Otherwise, it may cause a fire.
- In the case of a product with a power cord or AC adapter, use only genuine power cords and AC adapters provided by LG Electronics.
 - Otherwise, it may cause a fire or electric shock.
- If you are using headphones or earphones, do not turn on the volume too loudly or use them for a prolonged period. [This only applies to models that support headphones or earphones]
 - Otherwise, it may negatively affect your hearing ability.
- The software of this product can be updated with the **LG XBOOM app**. Do not turn off the power of the product while updating the software. Once the update is complete, the product power turns off automatically.
 - If you turn off the power of the product while the software is being updated, it may cause a product malfunction.

The following only applies to models with a remote control

- Do not let children use the remote control. Keep the remote control out of reach of toddlers.
- Do not let children put the remote control in their mouth. Make sure that children don't swallow the remote control cover or a battery. If a child swallowed one, consult a physician immediately.
- Beware that children may step on the remote control cover and get injured.
- Remove obstacles between the product and the remote control for the smooth operation of the remote control.

The following only applies to models that use optical discs

- Do not insert your hand into a disc drive or pull it out forcefully.
- Make sure that children do not insert their hands into the disc drive.

The following only applies to models that able to watch video

- Refrain from watching a 3D video if you didn't have enough sleep or after drinking alcohol.
 - Some 3D videos may surprise or excite people.
- If any of the following symptoms occur while watching a video, stop watching it immediately and take a rest.
 - If any of the symptoms continue, consult a physician. Vertigo, burning sensation of eyes or face, unconscious motion, spasm, clouded consciousness, confusion, disorientation, nausea.
- You may suffer a symptom such as a seizure when you watch a certain image in a video or game or a video with a certain pattern or flashing lights. If you or any of your relatives have a history of epilepsy or seizures, consult a physician before watching.
- When you watch a 3D video, remove objects that are fragile or can cause injury from your surroundings.
 - If you mistake a 3D video as real or move your body with surprise, you or your nearby relatives may get injured or objects near you may get damaged.

Precautions for cleaning the product

- Do not spray water directly onto the product when cleaning it.
 - Otherwise, it may cause a fire or electric shock.
- When cleaning the product, make sure that you pull out the power cord first and wipe the surface of the product lightly with a dry cloth. Do not use chemicals or detergents when cleaning the product. They may deteriorate the product surface or peel off the paint from the product (benzene, alcohol, etc.).

Before Reporting Product Malfunction

Troubleshooting



If you experience the following issues while using the product, please perform several checks, as they may not be malfunctions.

Symptom	Cause and Solution
Power is not supplied.	<ul style="list-style-type: none">• The battery is discharged. Recharge the battery.• Connect the speaker to the charging adapter.
There is no sound or the sound is distorted.	<ul style="list-style-type: none">• The volume of the speaker or the smart device may be set to the minimum. Adjust the volume on the speaker or the smart device appropriately.• Turning on the volume to the maximum on the external device may result in distorted sounds. Lower the volume on the external device.
The StanbyME connection failed.	<ul style="list-style-type: none">• Turn off the StanbyME and on again.• Check the StanbyME sound out setting. Make sure that [Use Wireless Speaker] was selected, and then "LG XT7S(XX)" was connected.
Bluetooth connection failed.	<ul style="list-style-type: none">• Turn off the Bluetooth setting and on again on the Bluetooth device.• Check if the Bluetooth setting is enabled.• Make sure that there is no obstacle between the speaker and the Bluetooth device.• Bluetooth pairing may fail depending on the Bluetooth device type and the surrounding environment.

The device does not operate normally.


- Battery discharge may cause the **Bluetooth** information to be deleted. If the speaker's power supply is blocked, previous settings may not be saved.
- Use this product in a place where the temperature and humidity are not too high or low. If the problem continues, contact LG Electronics' Customer Service Center.
- **Power** LED and **Bluetooth** LED blink when the speaker malfunction occurs and the speaker does not operate normally. Turn the power off and then on again.
- If a problem occurs while charging the battery of the product, the battery LED is off or alternates between red and amber and charging stops. Unplug the adapter from the outlet.
- Charging the product with a multi-charging cable (3 in 1, 5 in 1, etc.) may damage the product. Charge the product with the provided USB (Type C to A) cable.

The above solutions do not work.

- Press and hold the **Power**  and **SOUND BOOST**  buttons on the speaker for 7 seconds simultaneously. (→ See "Resetting the Speaker" on page 32.)
-

Appendix

| Specifications

General	
Power Supply	5 V  1.2 A (AC adapter) Built-in rechargeable battery
Power consumption	Refer to the main label.
Dimensions (W x H x D)	Approx. 326.0 mm x 78.0 mm x 87.0 mm (12.8 inch x 3.1 inch x 3.4 inch)
Temperature	5 °C - 35 °C (41 °F to 95 °F)
Humidity	5 % - 80 % RH
Ingress Protection	IPX5

Battery	
Battery capacity	3900 mAh
Operating time	Up to 16 hours 16 hours battery life is based on internal testing using 50 % volume and no lighting. Other conditional factors may affect battery life.
Charging time	4 hours or lower Charging time may vary depending on the battery or operation status.

- Actual features, functionality, and other product specifications may differ and are subject to change without notice.

| Registered Trademarks and Licenses

All trademarks and trade names are the property of their respective owners.



The **Bluetooth**® word mark and logos are registered trademarks owned by the **Bluetooth** SIG, Inc. and any use of such marks by LG Electronics is under license.

Other trademarks and trade names are those of their respective owners.



“Made for iPhone,” and “Made for iPod” mean that an electronic accessory has been designed to connect specifically to iPhone, or iPod, respectively, and has been certified by the developer to meet Apple performance standards. Apple is not responsible for the operation of this device or its compliance with safety and regulatory standards. Please note that the use of this accessory with iPhone or iPod may affect wireless performance.

The system is compatible with the latest iOS. Depending on your iPhone/iPod software version, you may not control your iPhone/iPod from the unit.

| Handling the Product

When shipping the Product

Please save the original shipping carton and packing materials. If you need to ship the product, for maximum protection, re-pack the product as it was originally packed at the factory.

Keeping the exterior surfaces clean

- Do not use volatile liquids such as insecticide spray near the product.
- Wiping with strong pressure may damage the surface.
- Do not leave rubber or plastic products in contact with the product for a long period of time.

Cleaning the product

To clean the product, use a soft, dry cloth. If the surfaces are extremely dirty, use a soft cloth lightly moistened with a mild detergent solution. Do not use strong solvents such as alcohol, benzene, or thinner, as these might damage the surface of the product.

