



OWNER'S MANUAL

MEDICAL MONITOR

Please read this manual carefully before operating your set and retain it for future reference.

24HR513C

www.lg.com

Copyright © 2023 LG Electronics Inc. All Rights Reserved.

CONTENTS

ON CLEANING3

LICENSE4

**OPEN SOURCE SOFTWARE NOTICE
INFORMATION4**

ASSEMBLY AND PREPARING5

USING THE MONITOR.....23

USER SETTINGS26

TROUBLESHOOTING37

PRODUCT SPECIFICATIONS39

**CYBER SECURITY MANAGEMENT
SERVICE.....47**

LIMITED WARRANTY (USA)48

LIMITED WARRANTY (CANADA).....50

Please note that this information is for proper use and safety of the equipment. The following symbols may indicate a hazardous situation in which, if not heeded, may result in serious injury or even death to the user or others, or damage to the equipment.

WARNING

- Indicates warning and safety instructions. If not adhered to, it could result in death or serious injury to the user or others.

CAUTION

- Indicates a hazardous situation which, if not heeded, may result in minor or moderate injury to the user or others, or damage to the equipment.

For users in the United States

- United State federal law restricts this equipment to be used by or on the order of a physician.

Indications for Use

- This Medical Monitor is indicated for use in displaying radiological images for review, analysis, and diagnosis by trained medical practitioners. The display is not intended for mammography.

Cybersecurity warnings and responsibilities

- Firmware update should be performed through LG Electronics or its distributor.
- If LG Electronics or its distributor instructs to update the firmware, update it immediately.

ON CLEANING

Recommended Cleaning Chemicals

- Isopropanol 70 %
- Ethanol 70 %
- 0.9 % NaCl solution
- Biospot 500 ppm

How to Use Cleaner

- Prior to cleaning, turn off the monitor and remove the power cable.
- Slightly dampen a soft non-abrasive cloth with a recommended cleaner, then lightly rub the screen with no more than 1 N of force.
- The cleaner could cause serious damage if it leaks inside the monitor while cleaning.
- Do not use benzene, thinner, acids or alkaline cleaners or other such solvents.
- Visually inspect the product for any contamination after cleaning. If contamination remains, repeat the cleaning process.
- If discoloration/cracks appear after cleaning, discontinue use and contact the manufacturer.
- Ensure lighting is adequate during the cleaning process.

NOTE

- LCD Panel cleaning method (Remove dust and finger print)
 - Rub gently by using soft cloth without cleaning chemicals.
 - Care must be taken when cleaning to avoid damage to the screen.

LICENSE

Each model has different licenses. Visit www.lg.com for more information on the license.



The terms HDMI, HDMI High-Definition Multimedia Interface, HDMI Trade Dress and the HDMI Logos are trademarks or registered trademarks of HDMI Licensing Administrator, Inc.



The SuperSpeed USB Trident logo is a registered trademark of USB Implementers Forum, Inc.

"DICOM® is the registered trademark of the National Electrical Manufacturers Association for its Standards publications relating to digital communications of medical information."

OPEN SOURCE SOFTWARE NOTICE INFORMATION

To obtain the source code that is contained in this product, under GPL, LGPL, MPL, and other open source licenses that have the obligation to disclose source code, and to access all referred license terms, copyright notices and other relevant documents, please visit <https://opensource.lge.com>.

LG Electronics will also provide open source code to you on CD-ROM for a charge covering the cost of performing such distribution (such as the cost of media, shipping, and handling) upon email request to opensource@lge.com. This offer is valid to anyone in receipt of this information for a period of three years after our last shipment of this product.

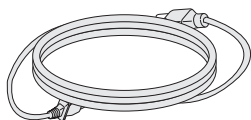
ASSEMBLY AND PREPARING

Product Composition

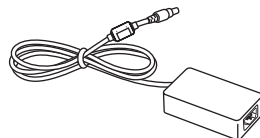
Please check whether all the components are included in the box before using the product. If there are any missing components, contact the retailer where you purchased the product. Note that the product and related components may look different from those shown here.



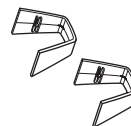
Owner's Manual/Regulatory Manual/
Cards



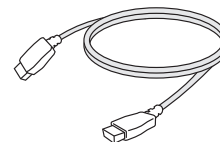
Power Cord



AC/DC Adaptor



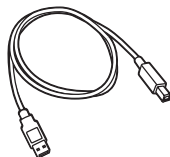
Cable Holder



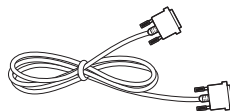
HDMI cable



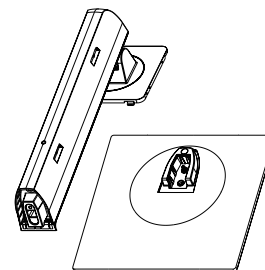
DisplayPort Cable



USB 3.0 Cable



DVI-D Cable



Stand Body/Stand Base

CAUTION

- Always use genuine LG components to ensure safety and product performance.
- The product warranty will not cover damage or injury caused by the use of unauthorized components.
- It is recommend to use the supplied components.
- If you use generic cables not certified by LG, the screen may not display or there may be image noises.
- Only use components listed below that meet the listed standard. Unauthorized components may cause damage to and malfunction of the product.

Component	Standard
HDMI Cable	Support HDMI 2.0 version, UL, Impedance 100 ohm
DisplayPort Cable	Support DisplayPort 1.2 Version, UL, Impedance 100 ohm
USB 3.0 Cable	Support USB 3.0, UL
DVI-D Cable	UL, Impedance 100 ohm
Power Cord	US – Approved Medical grade regulation Others – Approved country safety regulation

- The AC/DC adaptors and etc. except the upper components need to be used only supplied by manufacturer.

NOTE

- The components may look different from those illustrated here.
- Without prior notice, all product information and specifications contained in this manual are subject to change to improve the performance of the product.
- To purchase optional accessories, visit an electronics store or an online shopping site, or contact the retailer from which you purchased the product.
- The power cord provided may differ depending upon the region.

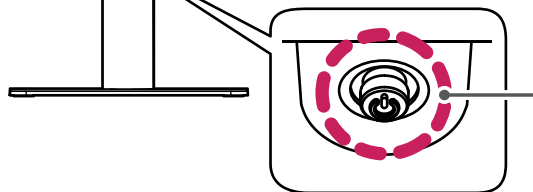
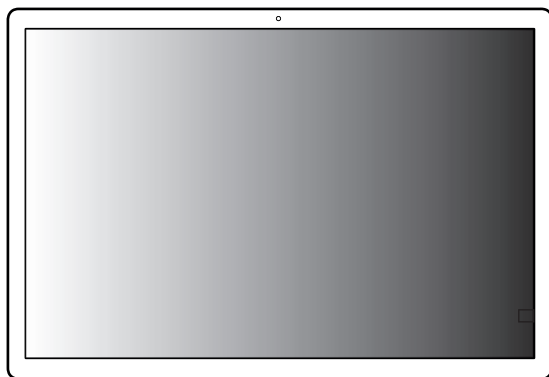
Supported Software

Drivers and Software	Installation Priority
LG Calibration Studio Medical	Recommended
On Screen Control	Optional
Dual Controller	Optional

- LG Calibration Studio Medical calibrate the color output of the monitor using Hardware Calibration. The program supports USB communication, so connect your PC and monitor using a USB cable and launch the LG Calibration Studio Medical program.
- Required and Recommended: You can download and install the latest version from the LGE website (www.lg.com).
- Optional: You can download and install the latest version from the LGE website (www.lg.com).

Product and Button Description

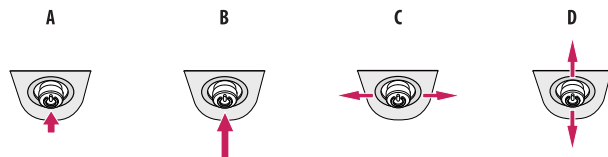
Front



- Joystick Button
- Power LED
 - On Mode: Light up
 - Sleep Mode(Standby Mode): Blinking
 - Off Mode: Off

How to Use the Joystick Button

You can easily control the functions of the monitor by pressing the joystick button or moving it left/right/up/down with your finger.



A (Power on): Press the joystick button once with your finger to turn on the monitor.

B (Power off): Press and hold the joystick button once more than 5 seconds with your finger to turn off the monitor.

C: Not functional

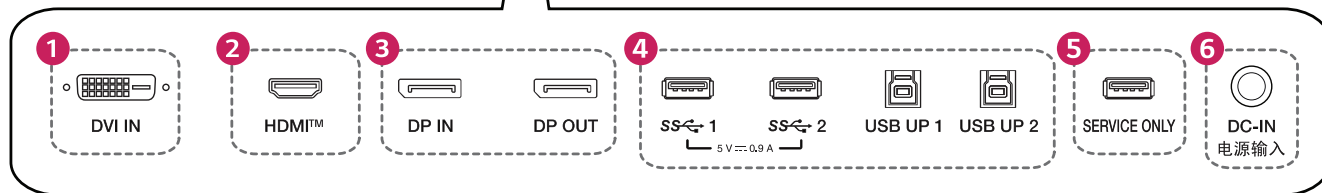
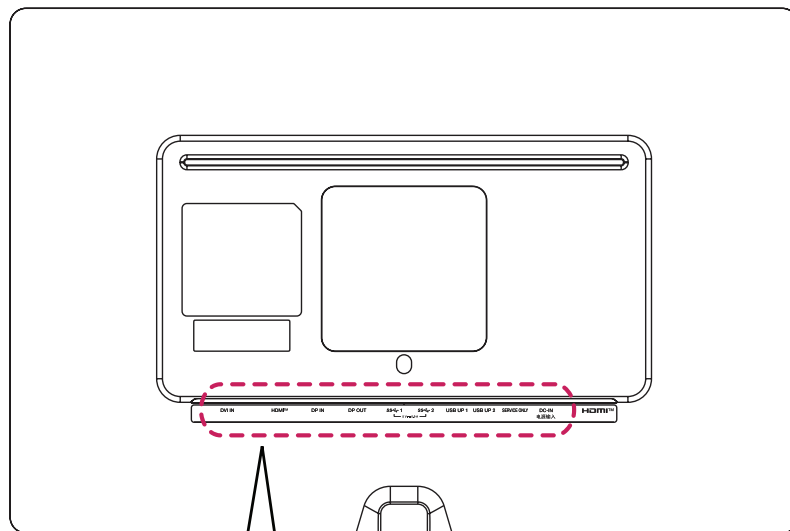
D (Show Information/Input Change): Move the joystick button up once with your finger to show information on the current input. Move the joystick button down twice with your finger to change input when multiple inputs are connected.

! NOTE

- The joystick button is located at the bottom of the monitor.

Connectors

Back



1 DVI IN

- Input digital video signal.

2 HDMI IN

- Input digital video signal.
- Using a DVI to HDMI / DisplayPort to HDMI cable may cause compatibility issues.
- Use a certified cable that displays the HDMI logo. The screen may not appear or a connection error could occur if a non-certified cable is used.
- Recommended HDMI cable types
 - High speed HDMI[®]/TM cable
 - High speed HDMI[®]/TM Ethernet cable

3 DP IN, DP OUT

- Receives or transmits digital video signals.
- There may be no video output depending on the DisplayPort version of your PC.
- A cable with DisplayPort 1.2 specifications is recommended when using a Mini DisplayPort to DisplayPort cable.

4 USB IN 1/2 (SS) 5 V 0.9 A, USB UP 1/2

- Used for HW Calibrator (Optional Accessory) connection.
- Connect peripheral device to the USB input port.
- A keyboard, mouse, or USB storage device can be connected.
- To use USB 2.0, connect the A-B type USB 2.0/USB 3.0 cable to the PC.

**CAUTION**

Cautions when using a USB storage device.

- A USB storage device which has a built-in automatic recognition program or uses its own driver might not be recognisable.
- Some USB storage devices may not be supported or may not work properly.
- It is recommended to use a USB hub or hard disk drive with power supplied. (If the power supplied is not enough, the USB device may not be detected properly.)

5 SERVICE ONLY

- This USB port is used only for service.

6 DC-IN

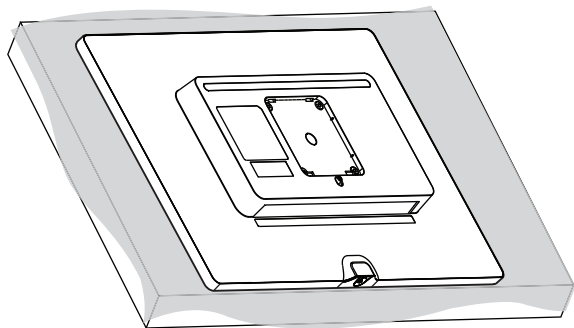
- Connect an AC/DC adapter.
- The output of the enclosed adaptor is 19 V.

! NOTE

- This monitor supports the *Plug and Play feature.
- * Plug and Play: A feature that allows you to add a device to your computer without the need for physical device configuration or user intervention.

Assembling the Stand base

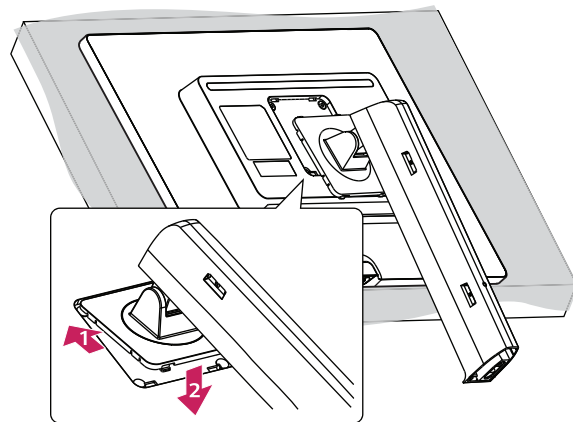
1



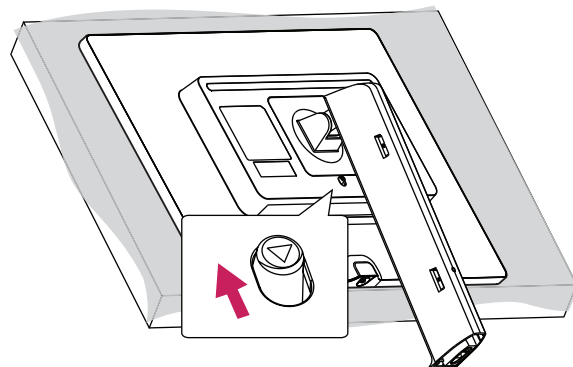
⚠ CAUTION

- To protect the screen from scratches, cover the surface with a soft cloth.

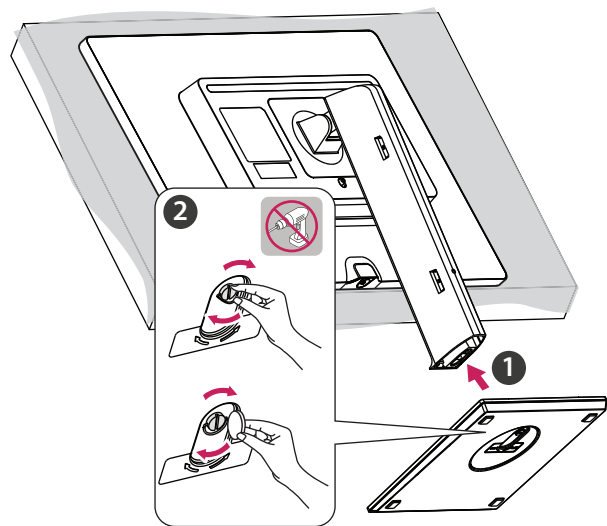
2



3

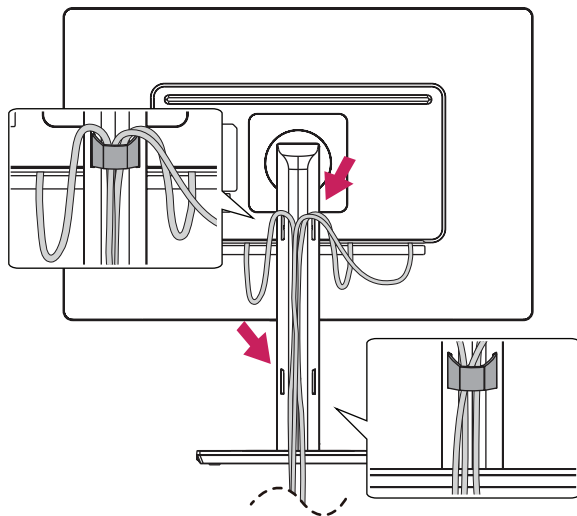


4



5



**⚠ CAUTION**

- Illustrations in this document represent typical procedures, so they may look different from the actual product.
- Do not apply foreign substances (oils, lubricants, etc.) to the screw parts when assembling the product. (Doing so may damage the product.)
- Applying excessive force when tightening screws may cause damage to the monitor. Damage caused in this way will not be covered by the product warranty.
- Do not carry the monitor upside down by just holding the base. This may cause the monitor to fall off the stand and could result in personal injury.
- When lifting or moving the monitor, do not touch the monitor screen. The force applied to the monitor screen may cause damage to it.

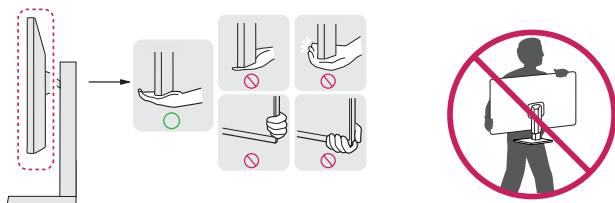
! NOTE

- You can disassemble the stand in the reverse order of the assembly.

Moving and Lifting the Monitor

When moving or lifting the monitor, follow these instructions to prevent the monitor from being scratched or damaged and to ensure safe transportation, regardless of its shape or size.

- Place the monitor in the original box or packing material before attempting to move it.
- Before moving or lifting the monitor, disconnect the power cord and all other cables.
- Hold the bottom and side of the monitor frame firmly. Do not hold the panel itself.
- When holding the monitor, the screen should face away from you to prevent it from being scratched.
- When transporting the monitor, do not expose the monitor to shock or excessive vibration.
- When moving the monitor, keep it upright and never turn the monitor on its side or tilt it sideways.

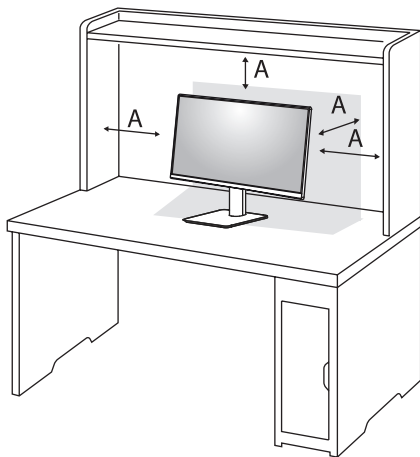


⚠ CAUTION

- Avoid touching the monitor screen as much as possible.
 - This may result in damage to the screen or some of the pixels used to create images.
- If you use the monitor panel without the stand base, its joystick button may cause the monitor to become unstable and fall, resulting in damage to the monitor or human injury. In addition, this may cause the joystick button to malfunction.

Installing on a Table

- Lift the monitor and place it on the table in an upright position. Place the monitor at least 100 mm (3.9 inches) away from the wall to ensure sufficient ventilation.

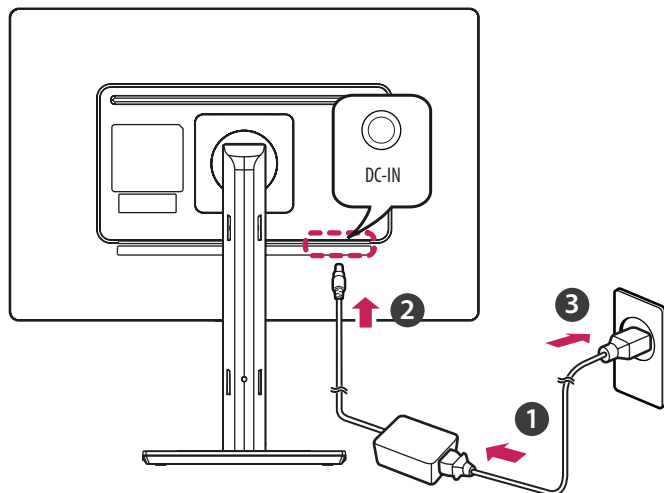


A: 100 mm (3.9 inches)

CAUTION

- Unplug the power cord before moving or installing the monitor. There is risk of electric shock.
- Make sure to use the power cord that is provided in the product package and connect it to a grounded power outlet.
- If you need another power cord, please contact your local dealer or the nearest retail store.

Precautions for Connecting the Power Cord

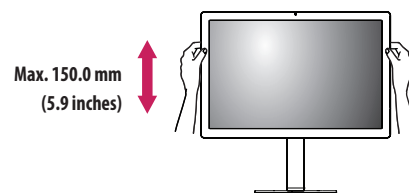


⚠ CAUTION

- Make sure to use the power cord that is provided in the product package. Connect the cord to a grounded power outlet.
- If you need another power cord, please contact your local dealer or the nearest retail store.

Adjusting the Stand Height

- 1 Place the monitor mounted on the stand base in an upright position.
- 2 Handle the monitor with both hands for safety.



⚠ WARNING

- When adjusting the screen height, do not place your hand on the stand body to avoid injury to your fingers.

Adjusting the Angle

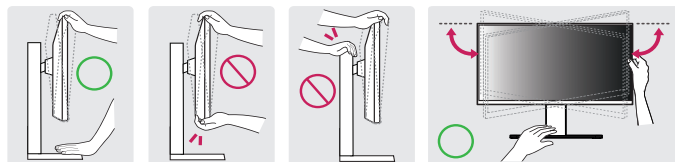
1 Place the monitor mounted on the stand base in an upright position.

2 Adjust the angle of the screen.

The angle of the screen can be adjusted forward or backward from -5° to 25° for a comfortable viewing experience. And you can also adjust the angle of the screen by 45 degrees to the left or to the right.

WARNING

- To avoid injury to the fingers when adjusting the screen, do not hold the lower part of the monitor's frame as illustrated below.
- Be careful not to touch or press the screen area when adjusting the angle of the monitor.

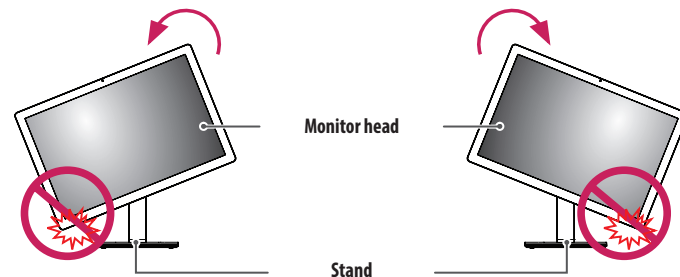


Pivot Feature

The pivot feature allows the monitor to rotate 90° clockwise or -90° counter-clockwise.

NOTE

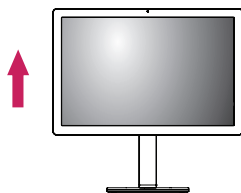
- [Screen Rotation] feature of the display is supported.
- If you select [Screen Rotation] manually, Go to [Input] > [Screen Rotation] function to set the item.



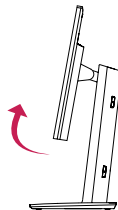
WARNING

- To avoid scratching the stand base, do not use excessive force or speed when rotating the monitor using the pivot feature, and make sure that the stand does not make contact with the monitor.
- To avoid injury to your fingers, do not put them between the screen and the stand base when turning the monitor's screen.
- Take care when rotating the monitor if the cable is connected.

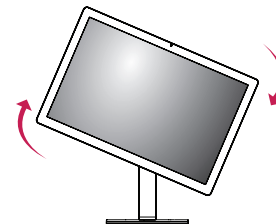
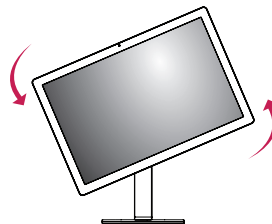
- 1 Raise the monitor up to the maximum height.



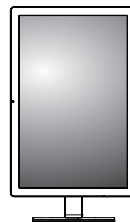
- 2 Adjust the angle of the monitor in the direction of the arrow as shown in the figure.



- 3 Rotate the monitor clockwise or counter-clockwise as shown in the figure.



- 4 Complete the installation by rotating the monitor 90° or -90° as shown in the figure.

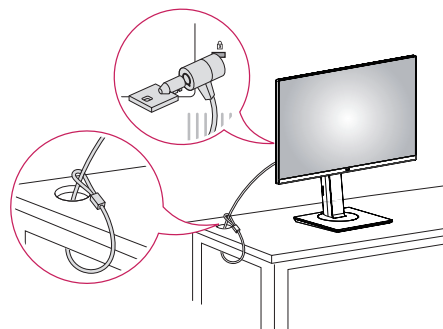


! NOTE

- The screen can be rotated easily using the screen pivot shortcut key provided with your Windows operating system. Note that some Windows versions and some graphics card drivers may use different settings for the screen pivot key or may not support the pivot key at all.
- Windows operating system screen pivot shortcut key.
 - 0°: Ctrl + Alt + keyboard up key (↑)
 - 90°: Ctrl + Alt + keyboard left key (←)
 - 180°: Ctrl + Alt + keyboard down key (↓)
 - 270°: Ctrl + Alt + keyboard right key (→)

Using the Kensington Lock

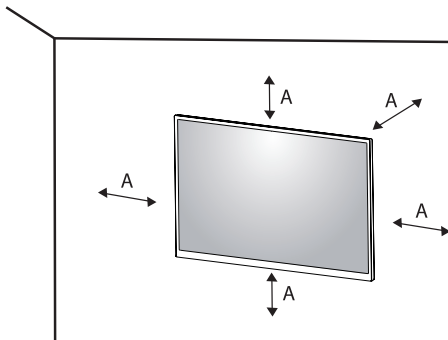
For more information on installation and usage, refer to the Kensington lock owner's manual or visit the website at <http://www.kensington.com>.

**! NOTE**

- The Kensington Lock is optional. You can obtain optional accessories from most electronics stores.

Installing on the Wall

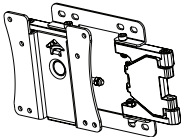
This monitor meets the specifications for the wall mount plate or other compatible devices. Install the monitor at least 100 mm (3.9 inches) away from the wall on each side of the monitor to ensure sufficient ventilation. Detailed installation instructions can be obtained from your local dealer. Please refer to the manual to install and set up a tilting wall mounting bracket.



A: 100 mm (3.9 inches)

Installing the Wall Mount Plate

This monitor meets the specifications for the wall mount plate or other compatible devices. To install the monitor to a wall, attach a wall mount plate (optional) to the back of the monitor. Make sure that the wall mount plate (optional) is securely fixed to the monitor and to the wall.

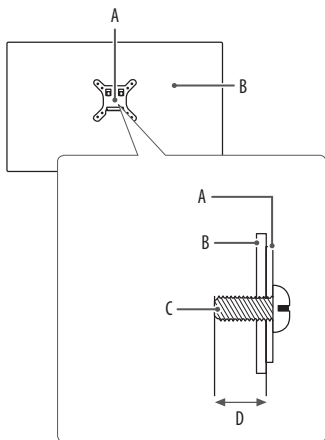
Wall Mount	100 mm x 100 mm (3.9 inches x 3.9 inches)
Standard screw	M4 x L10
Required screws	4
Wall Mount Plate (Optional)	LSW149 

NOTE

- A non-VESA standard screw may damage the product and cause the monitor to fall. LG Electronics is not liable for any accidents relating to the use of non-standard screws.
- The wall mount kit includes the installation guide and all necessary parts.
- The wall mounting bracket is optional. You can obtain optional accessories from your local dealer.
- The length of the screw may differ for each wall mounting bracket. If you use screws longer than the standard length, it may damage the inside of the product.
- For more information, please refer to the user manual for the wall mounting bracket.
- Be careful not to apply too much force while mounting the wall mount plate as it may cause damage to the screen.
- Remove the stand before installing the monitor on a wall mount by performing the stand attachment in reverse.

CAUTION

- Disconnect the power cord first. Then move or install the monitor. There is risk of electric shock.
- Installing the monitor on the ceiling or on a slanted wall may result in the monitor falling off, which could lead to injury. Use an authorized LG wall mount and contact the local dealer or qualified personnel.
- To prevent injury, this apparatus must be securely attached to the wall in accordance with the installation instructions.
- Applying excessive force when tightening screws may damage the monitor. Such damage is not covered by the product warranty.
- Use the wall mounting bracket and screws that confirm to VESA standards. Damage caused by the use or misuse of inappropriate components is not covered by the product warranty.
- When measured from the back of the monitor, the length of each installed screw must be 8 mm (0.3 inches) or less.



- A: Wall Mount Plate
 B: Back of the Monitor
 C: Standard screw
 D: Max. 8 mm (0.3 inches)

USING THE MONITOR

- Illustrations in this manual may differ from the actual product.
- Press the joystick button, go to [Menu] → [Input], and then select the input option.

⚠ CAUTION

- Do not press the screen for a prolonged time. This may cause image distortion.
- Do not display a still image on the screen for a prolonged time. This may cause image retention. Use a PC screensaver if possible.
- When connecting the power cord to the outlet, use a grounded (3-hole) power strip or a grounded power outlet.
- The monitor may flicker when turned on in an area where the temperature is low. This is normal.
- Sometimes red, green, or blue spots may appear on the screen. This is normal.
- Make sure to use the supplied cable of the product. Otherwise, this may cause the device to malfunction.

Connecting to a PC

- This monitor supports the *Plug and Play feature.
- * Plug and Play: A feature that allows you to add a device to your computer without having to reconfigure anything or install any manual drivers.

HDMI Connection

Transmits digital video and audio signals from your PC to the monitor.

Connect the PC and the monitor with the HDMI cable as shown in the following illustrations.



! NOTE

- Connecting your PC to the monitor using the HDMI cable may cause device compatibility issues.
- Using a DVI to HDMI / DP (DisplayPort) to HDMI cable may cause compatibility issues.
- Use a certified cable with the HDMI logo attached. If you do not use a certified HDMI cable, the screen may not display or a connection error may occur.
- Recommended HDMI cable types
 - High Speed HDMI[®]/™ cable
 - High Speed HDMI[®]/™ cable with Ethernet

DVI-D Connection

Transmits the digital video signal from your PC to the Monitor set.

Connect the PC and the monitor with the DVI-D cable as shown in the following illustrations.

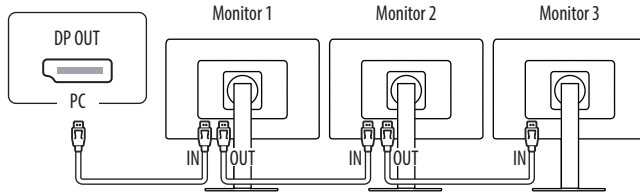


! NOTE

- This monitor supports only DVI single Link.

DisplayPort Connection

Transmits digital video and audio signals from your PC to the monitor.



CAUTION

- When using multiple monitors connected, it is recommended to use an LG monitor. In other models, this function may not work.
 - The recommended LG monitor model names are as follows.
Monitor 1, 2, 3: 24HR513C
- You can connect up to 3 monitors.

NOTE

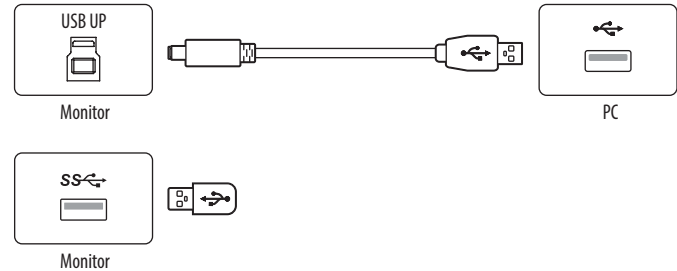
- There may be no video or audio output depending on the DisplayPort version of the PC.
- If you are using a Mini DisplayPort output graphics card, use a Mini DisplayPort to DisplayPort cable or gender that supports DisplayPort1.2. (Sold separately)

Connecting Peripherals

USB Device connection

The USB port on the product functions as a USB hub.

Peripheral devices connected to the USB IN port can be controlled from the PC.



NOTE

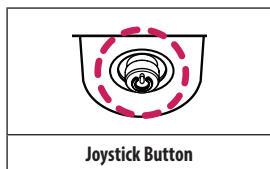
- It is recommended you install all Windows Updates to keep your Windows up-to-date before connecting to the product for use.
- Peripheral devices are sold separately.
- A keyboard, mouse, or USB device can be connected to the USB port.

USER SETTINGS

! NOTE

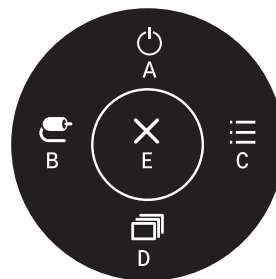
- Your monitor's OSD (On Screen Display) may differ slightly from that shown in this manual.

Activating the Main Menu



- 1 Press the joystick button on the bottom of the monitor.
- 2 Move the joystick up/down and left/right to set the options.
- 3 Press the joystick button once more to exit the main menu.

Main Menu Features



Main Menu	Description
A: [Power Off]	Turns off the monitor.
B: [Input]	Sets input mode.
C: [Menu]	Configures the screen settings.
D: [Picture Mode]	Sets the Picture mode.
E: [Exit]	Exits the main menu.

Menu Settings

- 1 To view the OSD menu, press the joystick button at the bottom of the monitor and then enter the [Menu].
- 2 Move the joystick up/down and left/right to set the options.
- 3 To return to the upper menu or set other menu items, move the joystick to ◀ or pressing (⏻) it.
- 4 If you want to exit the OSD menu, move the joystick to ◀ until you exit.



[Quick Settings]



[Input]




[Picture]



[General]

[Quick Settings]

[Menu] > [Quick Settings]	Description
[Brightness]	Adjusts the contrast and brightness of the screen.
[Contrast]	
[Color Temp]	Set color temperature. ([Custom], [6500K], [7500K], [9300K], [Manual])
[User Preset]	<p>User Preset allows the user to save or load up to 10 picture quality settings for multiple connected devices in each preset.</p> <p> NOTE</p> <ul style="list-style-type: none"> You can use User Preset to import or save items in [Picture Adjust] and [Color Adjust] of the [Picture] menu.

[Input]

[Menu] > [Input]	Description	
[Input List]	Selects the input mode.	
[Aspect Ratio]	Adjusts the aspect ratio of the screen.	
	[Full Wide]	Displays the video in widescreen, regardless of the video signal input.
	[Original]	Displays video according to the aspect ratio of the video signal input.
	[Just Scan]	The aspect ratio is not adjusted from the original.
	<div><div><div>!</div><div>NOTE</div></div><div><div></div><div>The display may look the same for [Full Wide], [Original] and [Just Scan] options at the recommended resolution.</div></div></div>	
[Screen Rotation]	Adjusts the screen image rotation. ([Auto], [Portrait -90°], [Landscape], [Portrait +90°])	


[Picture]

! NOTE

- The [Picture Mode] that can be set depends on the Input signal.


[Menu] > [Picture]		Description
[Picture Mode]	[Custom]	Allows the user to adjust each element.
	[Mono]	Mono (black and white) color mode.
	[Pathology]	Turn on pathology mode. Image clarity and accuracy as if you were looking at a microscope.
	[Text]	Optimizes the screen for text documents. You can brighten the screen in the OSD menu.
	[DICOM]	A mode that optimizes the screen settings so you can view images for medical use.
	[DICOM(Custom)]	<div><div>!</div><div>NOTE</div><div><ul style="list-style-type: none">Adjusts the brightness of screen in [DICOM(Custom)] mode.</div></div>
	[Calibration 1]	Adjusts to the calibrated screen.
	[Calibration 2]	
<div><div>!</div><div>NOTE</div><div><ul style="list-style-type: none">If the [Picture Mode] is changed in the DP (DisplayPort) input, the screen may flicker or the resolution of your PC screen may be affected.[Calibration 1] / [Calibration 2]: Installation of LG Calibration Studio Medical will enable this menu.</div></div>		

[Menu] > [Picture]	Description	
[Picture Adjust]	[Brightness]	<p>Adjusts the brightness of the screen.</p> <p>! NOTE</p> <ul style="list-style-type: none"> Press the ▼ button to toggle between [Turn on 'Brightness Stabilization']/[Turn off 'Brightness Stabilization']. When [Brightness Stabilization] is [On], the [Brightness] adjustment function is deactivated. When [Brightness Stabilization] is [On], [SMART ENERGY SAVING] and [DFC] functions are deactivated. When [Picture Mode] is set as [DICOM], or [Gamma] is set as [DICOM Gamma Curve] Setting, the [Brightness] adjustment function is deactivated. When [Picture Mode] is set as [DICOM(Custom)], the [Brightness] adjustment function is activated.
	[Auto Brightness]	Optimizes the brightness automatically for surrounding illuminance.
	[Contrast]	Adjusts the color contrast of the screen.
	[Sharpness]	Adjusts the sharpness of the screen.
	[Brightness Stabilization]	Maintains the brightness configured of the screen.
		[On] Automatically adjusts brightness.
		[Off] Deactivates the applicable function and the user can adjust the brightness.
	[SUPER RESOLUTION+]	[High] Optimizes the screen for crystal clear images.
		[Middle] Optimizes the screen for comfortable viewing, with images at the middle level between the low and high modes.
		[Low] Optimizes the screen for smooth and natural images.
		[Off] Displays in the most common setting. Disables [SUPER RESOLUTION+].
		<p>! NOTE</p> <ul style="list-style-type: none"> Because this is a function to increase the sharpness of low resolution pictures, it is not recommended to use the function for normal text or for desktop icons. Doing so may result in unnecessarily high sharpness.


[Menu] > [Picture]	Description	
[Picture Adjust]	[Black Level]	Sets the offset* level (for HDMI only). * Offset: as a reference for a video signal, this is the darkest color the monitor can display.
		[High] Keeps the current contrast ratio of the screen.
		[Low] Lowers the black levels and raises the white levels from the current contrast ratio of the screen.
	[DFC]	[On] Automatically adjusts brightness depending on the screen.
		[Off] Deactivates the [DFC] function.
	[Response Time]	Sets a response time for displayed pictures based on the movement of the picture on the screen. For a normal environment, it is recommended that you use [Fast]. When there is a lot of motion, it is recommended that you use [Faster]. Setting to [Faster] may cause image sticking.
		[Faster] Sets the response time to [Faster].
		[Fast] Sets the response time to [Fast].
		[Normal] Sets the response time to [Normal].
		[Off] Does not use the response time improvement feature.
	[Black Stabilizer]	You can control the black contrast to have better visibility in dark scenes. Increasing the [Black Stabilizer] value brightens the low gray level area on the screen. (You can easily distinguish objects on dark screens.) Reducing the [Black Stabilizer] value darkens the low gray level area and increases the dynamic contrast on the screen.
	[Uniformity]	Adjusts the uniformity of screen brightness.
		<div data-bbox="555 743 641 777">  NOTE </div> <ul style="list-style-type: none"> Enabling [Uniformity] may reduce the overall brightness of the image.

[Menu] > [Picture]		Description	
[Color Adjust]	[Gamma]	Set gamma value. ([Gamma 1.8], [Gamma 2.0], [Gamma 2.2], [Gamma 2.4], [Gamma 2.6], [DICOM Gamma Curve]) Higher gamma settings mean a darker image is displayed or vice versa.	
	[Color Temp]	Set color temperature.	
		[Custom]	The user can customize the red, green and blue color.
		[6500K]	Sets the picture color to the color temperature of a reddish 6500K.
		[7500K]	Sets the picture color to the color temperatures of 7500K, setting to a color between red and blue.
		[9300K]	Sets the picture color to the color temperature of a bluish 9300K.
		[Manual]	Adjusts the color temperature in 500K increments. (Note that 9300K is supported rather than 9500K.)
	[Red]/[Green]/[Blue]	You can customize the picture color using [Red], [Green], and [Blue] colors.	
	[Six Color]	Meets the user requirements for colors by adjusting the hue and saturation of the six colors (red, green, blue, cyan, magenta, and yellow) and then saving the settings.	
		Hue	Adjusts the tone of the screen colors.
		Saturation	Adjusts the saturation of the screen colors. The lower the value, the less saturated and brighter the colors become. The higher the value, the more saturated and darker the colors become.
[Picture Reset]	[Do you want to reset your picture settings?]	[No]	Cancel the select.
		[Yes]	Returns color to the default settings.

[General]

[Menu] > [General]	Description	
[Language]	Sets the menu screen to the desired language.	
[FOCUS VIEW]	Installation of On Screen Control and proceeding [FOCUS VIEW] will set max brightness of screen.	
[USB Upstream]	Select the USB Upstream cable connection port to use the USB Hub of the monitor.	
[SMART ENERGY SAVING]	Conserve energy by using luminance compensation algorithm.	
	[High]	Saves energy using the high-efficiency [SMART ENERGY SAVING] feature.
	[Low]	Saves energy using the low-efficiency [SMART ENERGY SAVING] feature.
	[Off]	Disables the feature.
	 NOTE <ul style="list-style-type: none"> The value of energy saving data may differ depending on panel and panel suppliers. If you select the option of [SMART ENERGY SAVING] is [High] or [Low], monitor luminance become higher or lower depend on source. 	
[Power LED]	When the Power LED function is turned on, it operates as follows: <ul style="list-style-type: none"> - On Mode: Light up - Sleep Mode(Standby Mode): Blinking - Off Mode: Off 	

[Menu] > [General]	Description	
[User Preset]	<p>User Preset allows the user to save or load up to 10 picture quality settings for multiple connected devices in each preset.</p> <p>! NOTE</p> <ul style="list-style-type: none"> You can use User Preset to import or save items in [Picture Adjust] and [Color Adjust] of the [Picture] menu. 	
	[User Name]	<p>Allows the user to change and register a user name (User 1 ~ User 10) as the user wants. The user can enter a user name to be registered by using the screen keyboard.</p>
	[Load User Settings]	<p>Allows the user to change the picture quality settings by loading the User Preset settings.</p>
	[Save User Settings]	<p>Saves the current picture quality settings in the corresponding User Preset.</p>
	[Default User Settings]	<p>Loads the initial basic picture settings.</p>
	[User Preset Reset]	<p>Initializes User Preset settings. Initializes the existing user name and user settings to be restored to factory settings.</p>

[Menu] > [General]	Description	
[Screen Off]	You can select system behavior in standby mode to only turn off screen.	
	[On]	Sets only turn off screen in sleep mode.
	[Off]	Sets system sleep and turn off screen in sleep mode.
[Input Compatibility Version]	You can set each input to match the supported version of the connected device.	
[OSD Lock]	<p>This feature disables the configuration and adjustment of menus.</p> <p> NOTE</p> <ul style="list-style-type: none"> All features are disabled except [Brightness]/[Contrast] in [Quick Settings], [Input List]/[Aspect Ratio]/[Screen Rotation] in [Input], and [OSD Lock]/[Information] in [General]. 	
[Information]	The following display information will be shown; Total Power On Time, Resolution.	
[Reset to Initial Settings]	Returns to the default settings.	

TROUBLESHOOTING

Nothing is displayed on the screen

- Is the monitor's power cord plugged in?
 - Check if the power cord is correctly plugged into the power outlet.
- Is the power LED on?
 - Check the power cable connection and press the power button.
- Is the power on and the power LED displaying white?
 - Check that the connected input is enabled ([Menu] > [Input]).
- Is the [No Signal] message being displayed?
 - This is displayed when the signal cable between the PC and the monitor is missing or disconnected. Check the cable and reconnect it.
- Is the [Out of Range] message being displayed?
 - This occurs when signals transferred from the PC (graphics card) are out of the horizontal or vertical frequency range of the monitor. Please see the <PRODUCT SPECIFICATIONS> section of this manual to set the appropriate frequency.

Screen display is unstable and shaky. / Images displayed on the monitor leave shadow trails.

- Did you select the appropriate resolution?
 - Not setting the graphics card to the recommended (optimal) resolution may result in blurred text, a dimmed screen, a truncated display area or misalignment of the display.
 - The setting methods may be different depending on the computer or operating system, and some resolutions may not be available depending on the performance of the graphics card. If this is the case, contact the manufacturer of the computer or graphics card for assistance.

The screen retains an image.

- Does image sticking occur even when the monitor is turned off?
 - Displaying a still image for a prolonged time may cause damage to the screen, resulting in the retention of the image.
 - To extend the lifetime of the monitor, use a screensaver.

The display color is abnormal.

- Does the display appear discolored (16 colors)?
 - Set the number of colors to 24 bit (true colors) or higher. (The settings may differ depending on the operating system (OS) you use.)
- Does the display color appear unstable or monochrome?
 - Check if the signal cable is connected properly. Reconnect the cable or reinsert the PC's graphics card.
- Are there spots on the screen?
 - When using the monitor, pixilated spots (red, green, blue, white or black) may appear on the screen. This is normal for an LCD screen. It is not an error, nor is it related to the monitor's performance.

Some features are disabled.

- Are some functions not available when you press the Menu button?
 - The OSD is locked. Disable [OSD Lock] in [General].

PRODUCT SPECIFICATIONS

In order to improve the product, specifications may change without notice.
 The symbol ~ means alternating current, and the symbol — means direct current.

LCD Screen	Type	TFT (Thin Film Transistor) LCD (Liquid Crystal Display) Screen
	Pixel Pitch	0.27 mm x 0.27 mm
Resolution	Max Resolution	1920 x 1200 @ 60 Hz ([Screen Rotation]:[Landscape])
		1200 x 1920 @ 60 Hz ([Screen Rotation]:[Portrait -90°], [Portrait +90°])
	Recommended Resolution	1920 x 1200 @ 60 Hz ([Screen Rotation]:[Landscape])
		1200 x 1920 @ 60 Hz ([Screen Rotation]:[Portrait -90°], [Portrait +90°])
Video Signal	Horizontal Frequency	30 kHz ~ 83 kHz ([Screen Rotation]:[Landscape])
		30 kHz ~ 120 kHz ([Screen Rotation]:[Portrait -90°], [Portrait +90°])
	Vertical Frequency	56 Hz ~ 61 Hz
Input Connector	DVI IN, HDMI IN, DP IN, USB IN 1/2 (SS ) 5 V — 0.9 A, USB UP 1/2, SERVICE ONLY, DC-IN	
Output Connector	DP OUT	
Power Sources	Power Rating	19 V — 3.42 A
	Power Consumption	MAX. 65 W* Sleep Mode (Standby Mode): ≤ 0.5 W Off Mode: ≤ 0.3 W
AC-DC Adaptor	Manufacturer: Asian Power Devices Inc. (APD) Model: DA-65J19 Input: 100-240 V ~ 50-60 Hz, 1.5-0.7 A Output: 19 V — 3.42 A Classification by protection type against Electric Shock: Class I equipment	

Environmental Conditions	Operating Conditions	Temperature	0 °C to 40 °C (32 °F to 104 °F)
		Humidity	0 % to 80 %
		Pressure	700 hPa to 1060 hPa
	Storage / Transport Conditions	Temperature	-20 °C to 60 °C (-4 °F to 140 °F)
		Humidity	0 % to 85 %
		Pressure	500 hPa to 1060 hPa

Monitor Size		
Dimensions (Width x Height x Depth)	With Stand	574.2 x 559.4 x 248.2 (mm) 22.6 x 22.0 x 9.7 (inches)
	Without Stand	574.2 x 382.4 x 59.3 (mm) 22.6 x 15.0 x 2.3 (inches)
Weight	With Stand	7.1 (kg) 15.6 (lbs)
	Without Stand	4.35 (kg) 9.5 (lbs)

Medical Specifications	Classification by protection type against Electric Shock	Class I equipment
	Mode of operation	Continuous Operation
	Environment of Use	This equipment is not suitable for use in the presence of flammable anesthetic or oxygen.

* The Operating Mode of Power Consumption is measured with LGE test standard. (Full White pattern, Maximum resolution)

* The Power Consumption level can be different by operating condition and monitor setting.

Support Mode (Preset Mode - PC)

DisplayPort/ DVI-D/ HDMI ([Screen Rotation]:[Landscape])

Resolution	Horizontal Frequency (kHz)	Vertical Frequency (Hz)	Polarity (H/V)	Remarks
640 x 480	31.469	59.94	-/-	
800 x 600	37.879	60.317	+/+	
1024 x 768	48.363	60	-/-	
1152 x 864	54.347	60.05	+/+	
1280 x 720	45.00	60.00	+/+	
1280 x 800	49.702	59.81	-/+	
1280 x 1024	63.981	60.02	+/+	
1440 x 900	55.935	59.887	-/+	
1600 x 1200	74.7	60	-/+	
1680 x 1050	65.290	59.954	-/+	
1920 x 1080	67.5	60	+/+	
1920 x 1200	74.04	59.95	+/-	Recommended timing

DisplayPort/ DVI-D/ HDMI ([Screen Rotation]:[Portrait -90°], [Portrait +90°])

Resolution	Horizontal Frequency (kHz)	Vertical Frequency (Hz)	Polarity (H/V)	Remarks
640 x 480	31.469	59.94	-/-	
800 x 600	37.879	60.317	+/+	
1024 x 768	48.363	60	-/-	
1152 x 864	54.347	60.05	+/+	
1280 x 720	45.00	60.00	+/+	
1280 x 800	49.702	59.81	-/+	
1280 x 1024	63.981	60.02	+/+	
1440 x 900	55.935	59.887	-/+	
1600 x 1200	74.7	60	-/+	
1680 x 1050	65.290	59.954	-/+	
1920 x 1080	67.5	60	+/+	
1200 x 1920	118.382	59.940	+/-	Recommended timing

Support Mode (Video)

Vertical dimensions	Vertical Frequency (Hz)	HDMI	DisplayPort
480p	59.94/60	○	○
576p	50	○	○
720p	50	○	○
720p	59.94/60	○	○
1080p	50	○	○
1080p	59.94/60	○	○

Supported Graphic Card List

Vendor	Graphic Card
NVIDIA	Quadro P/T Series
	Quadro RTX/RTX-A Series
AMD	Radeon Pro WX x100 Series
Intel	Iris Series

Principle of operation

This product is a medical image monitor with built-in converter (main controller) which outputs the image of medical device. When you connect the monitor to medical device, it displays medical image.

Qualified service personnel

All services except for the Quality Control Procedure must be performed by qualified service personnel. For the Quality control procedure, please refer to the 'Quality control procedure section'.

Quality control procedure

- Quality control tests can be performed with LG Calibration Studio Medical.
- LG Calibration Studio Medical performs calibration, QA test, conformance test and maintains consistency to all medical workstations.
- The use of the quality control software enables healthcare professionals to maintain international standards of quality in terms of their displays performance.
- The display quality of monitors is affected by the quality level of input signals and the degradation of the product. It is recommended that daily checkups and periodical constancy test be performed to comply with medical standards/guidelines according to your application. Use of the LG Calibration Studio Medical monitor quality control software enables you to perform high-level total quality control that meets medical standards/guidelines.
- It takes about 30 minutes for the performance of electrical parts to stabilize. Please wait 30 minutes or more after the monitor power has been turned on or the monitor has recovered from the power saving mode, and then adjust the monitor.
- Periodically perform constancy tests. Calibrate if necessary. For details, refer to the User Manuals for the LG Calibration Studio Medical monitor quality control software.

Calibration procedure

LG Calibration Studio Medical

First select the "Calibration" button on the left bar to enter the calibration tap.

In this page, you can select a sensor and set Lmax, Lmin, color temperature and ambient light level.

After you customized the calibration settings, place the sensor on the display and start the calibration process by pressing the "Execute" button.

Make sure no ambient light reaches the sensor. After calibration is finished a report will pop up on the screen with the calibration results.

Maintenance schedule

LG Calibration Studio Medical

User can schedule multiple tasks with specific type, start date, time and period.

Even if the LG Calibration Studio Medical is not running, it reminds the schedule at the specified date and time.

Performance specifications

We perform the physical laboratory test according to the 'Display Devices for Diagnostic Radiology – Guidance for Industry and Food and Drug Administration Staff' like below and we set the acceptance criteria for the physical laboratory test, the product was all passed according to the criteria.

Test detail

- 1 Spatial resolution
 - Measurements of the transfer of information from the image data to the luminance fields at different spatial frequencies of interest typically done by reporting the modulation transfer function.
- 2 Pixel defects
 - Measurements (count, types (e.g., sub-pixel or entire pixel), always-on, always-off), and locations (map) of pixel defects.
- 3 Artifacts
 - Evaluate for image artifacts such as ghosting and/or image sticking from displaying a fixed test pattern for a period of time.
- 4 Temporal response
 - Measurements of the temporal behavior of the display in responding to changes in image values from frame to frame.
- 5 Luminance (achievable and recommended)
 - Measurements of the luminance that the device outputs as used in the application under recommended conditions and the achievable values if the device is set to expand the range to the limit.
- 6 Conformance to a grayscale-to-luminance function (e.g., DICOM GSDF)
 - Measurements of the mapping between image values and the luminance output following a target model response for 256 or more levels.
- 7 Color tracking
 - Chromaticity at different luminance levels of gray shades, including the white point, as indicated by the color coordinates in an appropriate units system

CYBER SECURITY MANAGEMENT SERVICE

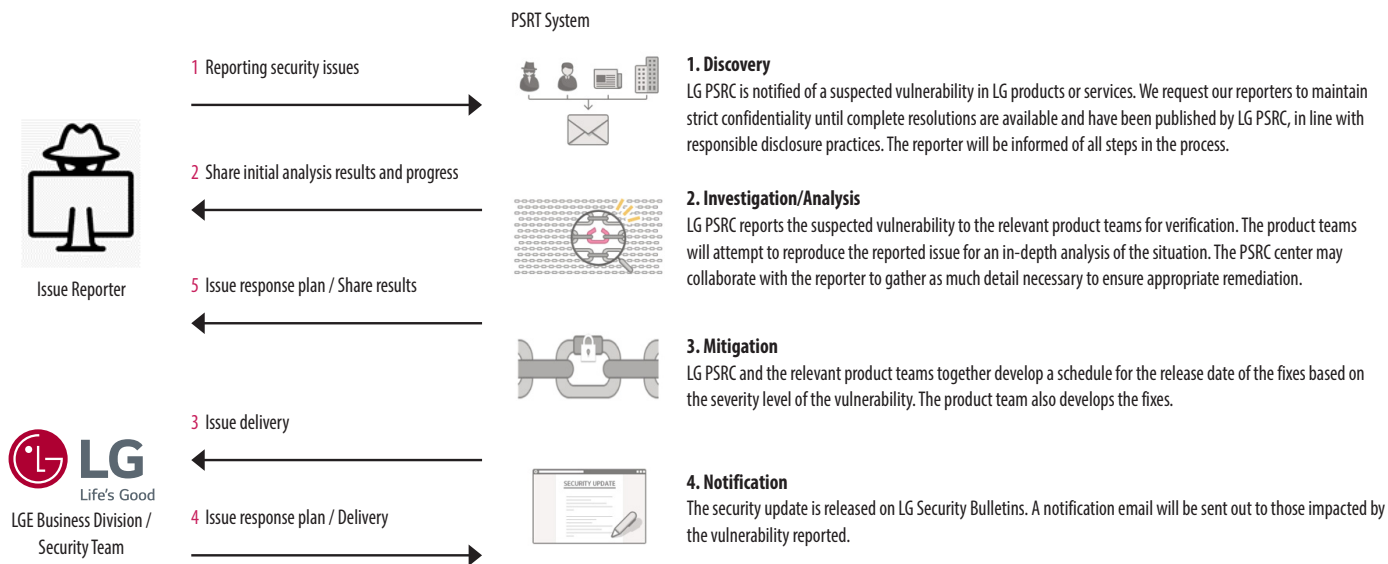
LGE operates an internal process for various cyber security-related issues that occur in the actual use environment.

The purpose of the process operation is to carry out plans, countermeasures, and response activities to respond to security issues when security issues such as security vulnerabilities in our products and product integration systems occur.

For initial application, use the PSRT official email account.

- PSRT email: product.security@lge.com

A typical response process is as follows:



- After the issue has been improved, if it is necessary to update the program, such as releasing a new installation file or applying some patch files, it is officially distributed through the head office sales/SE personnel along with the application guide to the person in charge of the corporation or the issue site.
- After end of support of product life, security patch can be offered for cyber security incidents prevention.

LIMITED WARRANTY (USA)

THE PRODUCT'S FULL LIMITED WARRANTY TERMS AND CONDITIONS ARE AVAILABLE AT <https://www.lg.com/us> AND/OR YOUR WARRANTY.

ARBITRATION NOTICE: THIS LIMITED WARRANTY CONTAINS AN ARBITRATION PROVISION THAT REQUIRES YOU AND LG ELECTRONICS ("LG") TO RESOLVE DISPUTES BY BINDING ARBITRATION INSTEAD OF IN COURT, UNLESS YOU CHOOSE TO OPT OUT. IN ARBITRATION, CLASS ACTIONS AND JURY TRIALS ARE NOT PERMITTED. PLEASE SEE THE SECTION TITLED "PROCEDURE FOR RESOLVING DISPUTES" BELOW.

PROCEDURE FOR RESOLVING DISPUTES:

ALL DISPUTES BETWEEN YOU AND LG ARISING OUT OF OR RELATING IN ANY WAY TO THIS LIMITED WARRANTY OR THE PRODUCT SHALL BE RESOLVED EXCLUSIVELY THROUGH BINDING ARBITRATION, AND NOT IN A COURT OF GENERAL JURISDICTION. BINDING ARBITRATION MEANS THAT YOU AND LG ARE EACH WAIVING THE RIGHT TO A JURY TRIAL AND TO BRING OR PARTICIPATE IN A CLASS ACTION.

Definitions. For the purposes of this section, references to "LG" mean LG Electronics U.S.A., Inc., its parents, subsidiaries and affiliates, and each of their officers, directors, employees, agents, beneficiaries, predecessors in interest, successors, assigns and suppliers; references to "dispute" or "claim" shall include any dispute, claim or controversy of any kind whatsoever (whether based in contract, tort, statute, regulation, ordinance, fraud, misrepresentation or any other legal or equitable theory) arising out of or relating in any way to the sale, condition or performance of the product or this Limited Warranty.

Notice of Dispute. In the event you intend to commence an arbitration proceeding, you must first notify LG in writing at least 30 days in advance of initiating the arbitration by sending a letter to LG at LG Electronics, USA, Inc. Attn: Legal Department- Arbitration 111 Sylvan Avenue, Englewood Cliffs, NJ 07632. You and LG agree to engage in good faith discussions in an attempt to amicably resolve your claim. The notice must provide your name, address, and telephone number; identify the product that is the subject of the claim; and describe the nature of the claim and the relief being sought. If you and LG are unable to resolve the dispute within 30 days, either party may proceed to file a claim for arbitration.

Agreement to Binding Arbitration and Class Action Waiver. Upon failure to resolve the dispute during the 30 day period after sending written notice to LG, you and LG agree to resolve any claims between us only by binding arbitration on an individual basis, unless you opt out as provided below. Any dispute between you and LG shall not be combined or consolidated with a dispute involving any other person's or entity's product or claim. More specifically, without limitation of the foregoing, any dispute between you and LG shall not under any circumstances proceed as part of a class or representative action. Instead of arbitration, either party may bring an individual action in small claims court, but that small claims court action may not be brought on a class or representative basis.

Arbitration Rules and Procedures. To begin arbitration of a claim, either you or LG must make a written demand for arbitration. The arbitration will be administered by the American Arbitration Association ("AAA") and will be conducted before a single arbitrator under the AAA's Consumer Arbitration Rules that are in effect at the time the arbitration is initiated (referred to as the "AAA Rules") and under the procedures set forth in this section. The AAA Rules are available online at www.adr.org/consumer. Send a copy of your written demand for arbitration, as well as a copy of this provision, to the AAA in the manner described in the AAA Rules. You must also send a copy of your written demand to LG at LG Electronics, USA, Inc. Attn: Legal Department- Arbitration 111 Sylvan Avenue, Englewood Cliffs, NJ 07632. If there is a conflict between the AAA Rules and the rules set forth in this section, the rules set forth in this section will govern. This arbitration provision is governed by the Federal Arbitration Act. Judgment may be entered on the arbitrator's award in any court of competent jurisdiction. All issues are for the arbitrator to decide, except that issues relating to the scope and enforceability of the arbitration provision and to the arbitrability of the dispute are for the court to decide. The arbitrator is bound by the terms of this provision.

Governing Law. The law of the state of your residence shall govern this Limited Warranty and any disputes between us except to the extent that such law is preempted by or inconsistent with applicable federal law.

Fees/Costs. You do not need to pay any fee to begin an arbitration. Upon receipt of your written demand for arbitration, LG will promptly pay all arbitration filing fees to the AAA unless you seek more than \$25,000 in damages, in which case the payment of these fees will be governed by the AAA Rules. Except as otherwise provided for herein, LG will pay all AAA filing, administration and arbitrator fees for any arbitration initiated in accordance with the AAA Rules and this arbitration provision. If you prevail in the arbitration, LG will pay your attorneys' fees and expenses as long as they are reasonable, by considering factors including, but not limited to, the purchase amount and claim amount. Notwithstanding the foregoing, if applicable law allows for an award of reasonable attorneys' fees and expenses, an arbitrator can award them to the same extent that a court would. If the arbitrator finds either the substance of your claim or the relief sought in the demand is frivolous or brought for an improper purpose (as measured by the standards set forth in Federal Rule of Civil Procedure 11(b)), then the payment of all arbitration fees will be governed by the AAA Rules. In such a situation, you agree to reimburse LG for all monies previously disbursed by it that are otherwise your obligation to pay under the AAA Rules. Except as otherwise provided for, LG waives any rights it may have to seek attorneys' fees and expenses from you if LG prevails in the arbitration.

Hearings and Location. If your claim is for \$25,000 or less, you may choose to have the arbitration conducted solely on the basis of (1) documents submitted to the arbitrator, (2) through a telephonic hearing, or (3) by an in-person hearing as established by the AAA Rules. If your claim exceeds \$25,000, the right to a hearing will be determined by the AAA Rules. Any in-person arbitration hearings will be held at a location within the federal judicial district in which you reside unless we both agree to another location or we agree to a telephonic arbitration.

Opt Out. You may opt out of this dispute resolution procedure. If you opt out, neither you nor LG can require the other to participate in an arbitration proceeding. To opt out, you must send notice to LG no later than 30 calendar days from the date of the first consumer purchaser's purchase of the product by either: (i) sending an e-mail to optout@lge.com, with the subject line: "Arbitration Opt Out" or (ii) calling 1-800-980-2973. You must include in the opt out e-mail or provide by telephone: (a) your name and address; (b) the date on which the product was purchased; (c) the product model name or model number; and (d) the serial number (the serial number can be found (i) on the product; or (ii) online by accessing <https://www.lg.com/us/support> and clicking on "How do I find my model number?").

You may only opt out of the dispute resolution procedure in the manner described above (that is, by e-mail or telephone); no other form of notice will be effective to opt out of this dispute resolution procedure.

Opting out of this dispute resolution procedure will not affect the coverage of the Limited Warranty in any way, and you will continue to enjoy the full benefits of the Limited Warranty. If you keep this product and do not opt out, then you accept all terms and conditions of the arbitration provision described above.

LIMITED WARRANTY (CANADA)

THE PRODUCT'S FULL LIMITED WARRANTY TERMS AND CONDITIONS ARE AVAILABLE AT https://www.lg.com/ca_en/ AND/OR YOUR WARRANTY.

ARBITRATION NOTICE: THIS LIMITED WARRANTY CONTAINS AN ARBITRATION PROVISION THAT REQUIRES YOU AND LG TO RESOLVE DISPUTES BY BINDING ARBITRATION INSTEAD OF IN COURT, UNLESS THE LAWS OF YOUR PROVINCE OR TERRITORY DO NOT PERMIT THAT, OR, IN OTHER JURISDICTIONS, IF YOU CHOOSE TO OPT OUT. FOR FURTHER CLARITY, THIS ARBITRATION PROVISION IS NOT APPLICABLE TO CONSUMERS RESIDING IN ONTARIO AND QUÉBEC. IN ARBITRATION, CLASS ACTIONS AND JURY TRIALS ARE NOT PERMITTED. PLEASE SEE THE SECTION TITLED "PROCEDURE FOR RESOLVING DISPUTES" BELOW.

- **DISCLAIMER:**

IF YOU ARE A CONSUMER SUBJECT TO QUÉBEC AND ONTARIO'S CONSUMER PROTECTION ACT, THE EXCLUSION OF WARRANTIES CONTAINED IN THIS SECTION DO NOT EXCLUDE OR LIMIT THE RIGHTS AND REMEDIES THAT YOU MAY HAVE UNDER SUCH ACT, INCLUDING THE RIGHT TO MAKE A CLAIM UNDER ANY OF THE STATUTORY WARRANTIES PROVIDED THEREUNDER.

PROCEDURE FOR RESOLVING DISPUTES:

EXCEPT WHERE PROHIBITED AT LAW (INCLUDING WITH RESPECT TO QUÉBEC AND ONTARIO CONSUMERS), ALL DISPUTES BETWEEN YOU AND LG ARISING OUT OF OR RELATING IN ANY WAY TO THIS LIMITED WARRANTY OR THE PRODUCT SHALL BE RESOLVED EXCLUSIVELY THROUGH BINDING ARBITRATION, AND NOT IN A COURT OF GENERAL JURISDICTION. EXCEPT WHERE PROHIBITED AT LAW (INCLUDING WITH RESPECT TO QUÉBEC AND ONTARIO CONSUMERS), YOU AND LG BOTH IRREVOCABLY AGREE TO WAIVE THE RIGHT TO A JURY TRIAL AND TO BRING OR PARTICIPATE IN A CLASS ACTION.

Definitions. For the purposes of this section, references to "LG" mean LG Electronics Canada, Inc., its parents, subsidiaries and affiliates, and each of their officers, directors, employees, agents, beneficiaries, predecessors in interest, successors, assigns and suppliers; references to "dispute" or "claim" shall include any dispute, claim or controversy of any kind whatsoever (whether based in contract, tort, statute, regulation, ordinance, fraud, misrepresentation or any other legal or equitable theory) arising out of or relating in any way to the sale, condition or performance of the product or this Limited Warranty.

Notice of Dispute. In the event you intend to commence an arbitration proceeding, you must first notify LG in writing at least 30 days in advance of initiating the arbitration by sending a letter to LGECI Legal Team at 20 Norelco Drive, North York, Ontario, Canada M9L 2X6 (the "Notice of Dispute"). You and LG agree to engage in good faith discussions in an attempt to amicably resolve your claim. The notice must provide your name, address, and telephone number; identify the product that is the subject of the claim; and describe the nature of the claim and the relief being sought. If you and LG are unable to resolve the dispute within 30 days of LG's receipt of the Notice of Dispute, the dispute shall be resolved by binding arbitration in accordance with the procedure set out herein. You and LG both agree that, during the arbitration proceeding, the terms (including any amount) of any settlement offer made by either you or LG will not be disclosed to the arbitrator until the arbitrator determines the dispute.

Agreement to Binding Arbitration and Class Action Waiver. Upon failure to resolve the dispute during the 30 day period after LG's receipt of the Notice of Dispute, you and LG agree to resolve any claims between you and LG only by binding arbitration on an individual basis, unless you opt out as provided below, or you reside in a jurisdiction that prevents full application of this clause in the circumstances of the claims at issue (in which case if you are a consumer, this clause will only apply if you expressly agree to the arbitration). To the extent permitted by applicable law, any dispute between you and LG shall not be combined or consolidated with a dispute involving any other person's or entity's product or claim. More specifically, without limitation of the foregoing, except to the extent such a prohibition is not permitted at law, any dispute between you and LG shall not under any circumstances proceed as part of a class or representative action. Instead of arbitration, either party may bring an individual action in small claims court, but that small claims court action may not be brought on a class or representative basis except to the extent this prohibition is not permitted at law in your province or territory of jurisdiction as it relates to the claims at issue between you and LG. This does not apply to consumers in Ontario and Québec. In accordance with provincial legislation, the consumer and LG may agree to resolve the dispute using any procedure available, including commencing the action before the competent courts of those provinces.

Arbitration Rules and Procedures. To begin arbitration of a claim, either you or LG must make a written demand for arbitration. The arbitration will be private and confidential, and conducted on a simplified and expedited basis before a single arbitrator chosen by the parties under the provincial or territorial commercial arbitration law and rules of the province or territory of your residence. You must also send a copy of your written demand to LG at LG Electronics, Canada, Inc., Attn: Legal Department- Arbitration, 20 Norelco Drive, North York, Ontario M9L 2X6. This arbitration provision is governed by your applicable provincial or territorial commercial arbitration legislation. For consumers in Ontario and Québec, the applicable arbitration legislation only applies if consumers agree to submit the dispute to arbitration. Judgment may be entered on the arbitrator's award in any court of competent jurisdiction. All issues are for the arbitrator to decide, except that, issues relating to the scope and enforceability of the arbitration provision and to the arbitrability of the dispute are for the court to decide. The arbitrator is bound by the terms of this provision.

Governing Law. The law of the province or territory of your purchase shall govern this Limited Warranty and any disputes between you and LG except to the extent that such law is preempted by or inconsistent with applicable federal or provincial/territorial law. Should arbitration not be permitted for any claim, action, dispute or controversy between you and LG, you and LG attorn to the exclusive jurisdiction of the courts of the province or territory of your purchase for the resolution of the claim, action, dispute or controversy between you and LG.

Fees/Costs. You do not need to pay any fee to begin an arbitration. Upon receipt of your written demand for arbitration, LG will promptly pay all arbitration filing fees unless you seek more than \$25,000 in damages, in which case the payment of these fees will be governed by the applicable arbitration rules. Except as otherwise provided for herein, LG will pay all filing, administration and arbitrator fees for any arbitration initiated in accordance with the applicable arbitration rules and this arbitration provision. If you prevail in the arbitration, LG will pay your attorneys' fees and expenses as long as they are reasonable, by considering factors including, but not limited to, the purchase amount and claim amount. Notwithstanding the foregoing, if applicable law allows for an award of reasonable attorneys' fees and expenses, an arbitrator can award them to the same extent that a court would. If the arbitrator finds either the substance of your claim or the relief sought in the demand is frivolous or brought for an improper purpose (as measured by the applicable laws), then the payment of all arbitration fees will be governed by the applicable arbitration rules. In such a situation, you agree to reimburse LG for all monies previously disbursed by it that are otherwise your obligation to pay under the applicable arbitration rules. Except as otherwise provided for, LG waives any rights it may have to seek attorneys' fees and expenses from you if LG prevails in the arbitration.

Hearings and Location. If your claim is for \$25,000 or less, you may choose to have the arbitration conducted solely (1) on the basis of documents submitted to the arbitrator, (2) through a telephonic hearing, or (3) by an in-person hearing as established by the applicable arbitration rules. If your claim exceeds \$25,000, the right to a hearing will be determined by the applicable arbitration rules. Any in-person arbitration hearings will be held at the nearest, most mutually-convenient arbitration location available within the province or territory in which you reside unless you and LG both agree to another location or agree to a telephonic arbitration.

Severability and Waiver. If any portion of this Limited Warranty (including these arbitration procedures) is unenforceable, the remaining provisions will continue in full force and effect to the maximum extent permitted by applicable law. Should LG fail to enforce strict performance of any provision of this Limited Warranty (including these arbitration procedures), it does not mean that LG intends to waive or has waived any provision or part of this Limited Warranty.

Opt Out. The arbitration provision requires you and LG to resolve disputes by binding arbitration instead of court, unless the laws of your province or territory do not permit that, or, in other jurisdictions, if you choose to opt out. The arbitration provision does not apply to consumers in Ontario and Québec.

For individuals that fall within the binding arbitration provisions, you may opt out of this dispute resolution procedure. If you opt out, neither you nor LG can require the other to participate in an arbitration proceeding. To opt out, you must send notice to LG no later than 30 calendar days from the date of the first consumer purchaser's purchase of the product by either (i) sending an e-mail to optout@lge.com, with the subject line: "Arbitration Opt Out;" or (ii) calling 1-800-980-2973. You must include in the opt out e-mail or provide by telephone: (a) your name and address; (b) the date on which the product was purchased; (c) the product model name or model number; and (d) the serial number (the serial number can be found (i) on the product; or (ii) online by accessing https://www.lg.com/ca_en/findmodel_serial/).

In the event that you "Opt Out", the law of the province or territory of your residence shall govern this Limited Warranty and any disputes between you and LG except to the extent that such law is preempted by or inconsistent with applicable federal or provincial/territorial law. Should arbitration not be permitted for any claim, action, dispute or controversy between you and LG, you and LG agree to attorn to the exclusive jurisdiction of the courts of the province or territory of your residence for the resolution of the claim, action, dispute or controversy between you and LG.

You may only opt out of the dispute resolution procedure in the manner described above (that is, by e-mail or telephone); no other form of notice will be effective to opt out of this dispute resolution procedure. Opting out of this dispute resolution procedure will not affect the coverage of the Limited Warranty in any way, and you will continue to enjoy the full benefits of the Limited Warranty. If you keep this product and do not opt out, then you accept all terms and conditions of the arbitration provision described above.

Conflict of Terms. In the event of a conflict or inconsistency between the terms of this Limited Warranty and the End User License Agreement ("EULA") in regards to dispute resolution, the terms of this Limited Warranty shall control and govern the rights and obligations of the parties and shall take precedence over the EULA.



The model and serial number of the product are located on the back and on one side of the product.
Record them below in case you ever need service.

Model

Serial No.

Supplier's Declaration of Conformity

Trade Name	LG
Responsible Party	LG Electronics USA, Inc.
Address	111 Sylvan Avenue, North Building, Englewood Cliffs, NJ 07632
E-mail	lg.environmental@lge.com

WARNING: This equipment is compliant with Class A of CISPR 32. In a residential environment this equipment may cause radio interference.