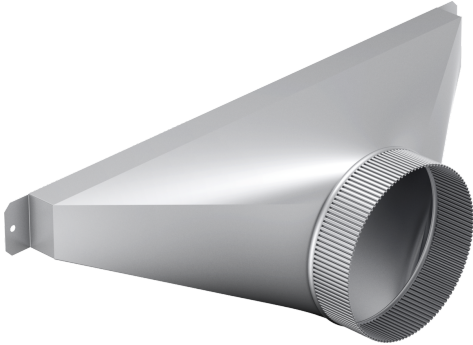


**installation accessory**  
**HDDSTRAN6**



**6" Round Transition Enable Ducting To Be  
At Sides Or Rear Of Downdraft For  
Flexible Configurations To Maximize Your  
Kitchen Design**

- Customize The Direction Of Duct Discharge To Be Left, Right, Or Rear
- Rectangular 1-7/8" x 19" Transition To 6" Round
- Ability To Use With Ducting Or Elbows With 6" Round Duct Connection
- Some Blower Positions May Need Deeper Cabinets. See Installation Guide
- Ability To Use With DHG6105NUC Inline or DHG6023RUC Remote Blowers



## installation accessory HDDSTRAN6

### **6" Round Transition Enable Ducting To Be At Sides Or Rear Of Downdraft For Flexible Configurations To Maximize Your Kitchen Design**

---

#### **Design**

- Customize The Direction Of Duct Discharge To Be Left, Right, Or Rear
- Rectangular 1-7/8" x 19" Transition To 6" Round
- Ability To Use With Ducting Or Elbows With 6" Round Duct Connection
- Some Blower Positions May Need Deeper Cabinets. See Installation Guide

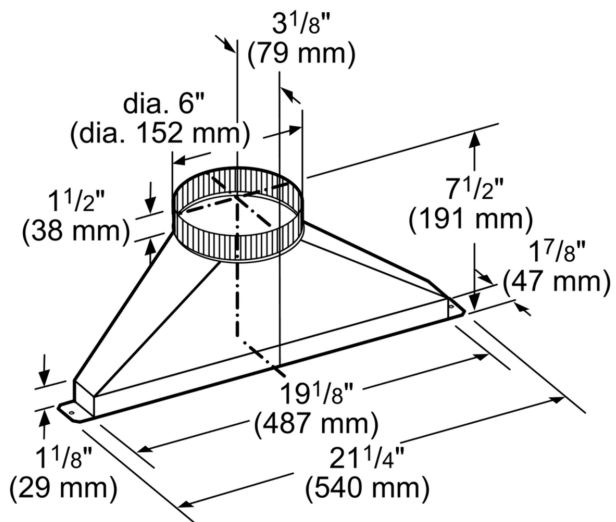
#### **Performance**

- Ability To Use With DHG6105NUC Inline or DHG6023RUC Remote Blowers

## installation accessory

### HDDSTRAN6

---



measurements in inches (mm)