

FISHER & PAYKEL

DATA SHEET Induction Cooktop, 36", Minimal Style

Model no:

CI365DTB4

(refer page 2 for metric measurements)

Product Dimensions	in
Ⓐ Overall height of cooktop	3 3/8"
Ⓑ Overall width of cooktop	35 3/8"
Ⓒ Overall depth of cooktop	20 7/8"
Ⓓ Height of cooktop glass	1/4"
Ⓔ Height of chassis including conduit junction	3 1/8"
Ⓕ Width of chassis	33 3/4"
Ⓖ Depth of chassis	19 1/16"
Ⓗ Distance from side edges of cooktop to chassis	13/16"
Ⓘ Distance from front edge of cooktop to chassis	1/2"
Ⓛ Distance from back edge of cooktop to chassis	1 5/16"
Ⓚ Distance from rear of cooktop to center of conduit junction	1 3/8"
Ⓜ Distance from right of cooktop to center of conduit junction	1 3/16"

Product Clearances	in
Minimum clearance from side edges of cutout to nearest combustible surface	1 3/16"
Minimum clearance from rear edge of cutout to nearest combustible surface	1 3/8"
Minimum clearance from counter top to top of any appliances, companion product or obstruction below cooktop*	3 3/8"
Minimum clearance from glass surface to:	
- overhead cabinet centered above the cooktop (unprotected)	30"
- overhead cabinet centered above the cooktop (protected)	24"
- rangehood	25 5/8"
Minimum clearance from glass surface to overhead cabinet not directly above cooktop	17 3/4"
Minimum ventilation gap between bottom of counter and top of cabinetry fronts (not shown)	3/16"

*Clearance for proud installation of the cooktop. For flush install the height of the cooktop glass needs to be added to the clearance.

NOTE: The oven installed below the cooktop MUST have a cooling fan. It is important that the induction cooktop receives adequate air supply. For ventilation requirements please refer to the installation manual.

Cutout Dimensions	in
Overall width of cutout**	34 1/4"
Overall depth of cutout***	19 7/16"

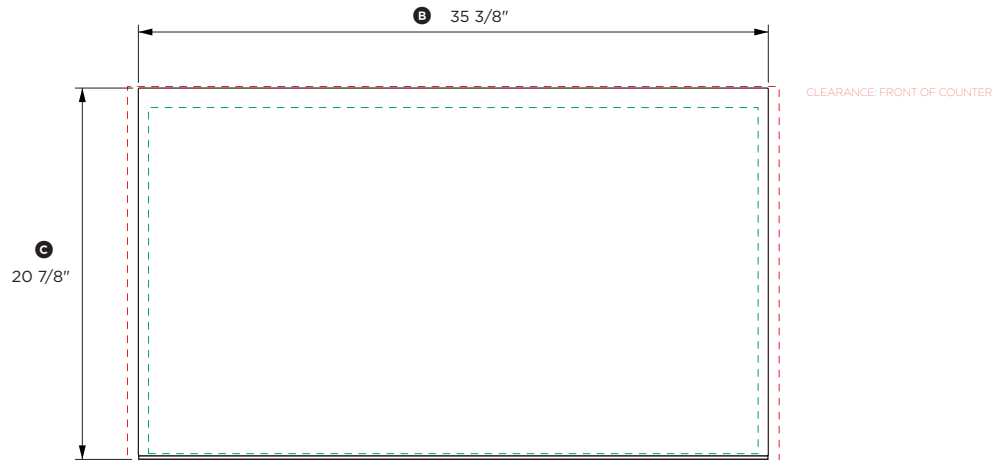
**NOTE: Cutout position is centered to the cooktop width

***NOTE: Cutout is offset 3/8" from the front of the cooktop

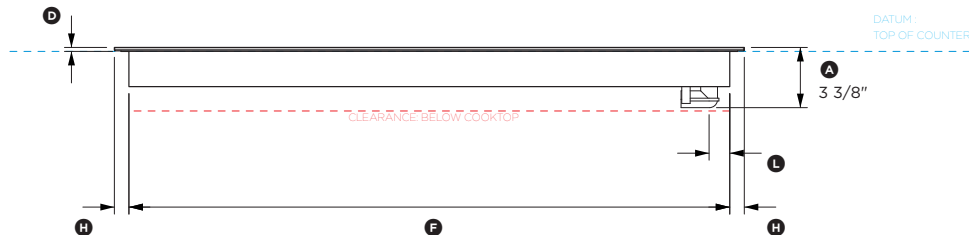
INDICATES CUTOUT -----
INDICATES CABINETRY / PRODUCT DATUM -----
INDICATES CABINETRY CLEARANCES - - - - -

DATE: 08.12.2021

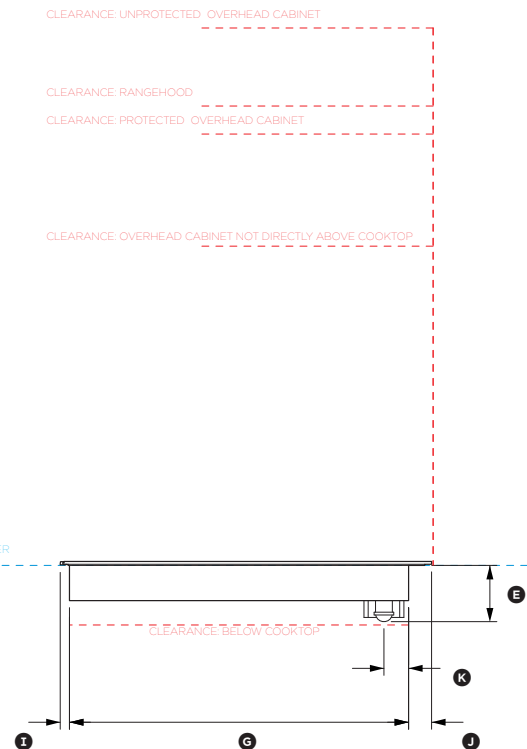
IMPORTANT NOTE: Throughout this guide, dimensions may vary by ±2mm (1/16"). Please read the installation manual for detailed information on installing the product. For full installation instructions & specifications visit fisherpaykel.com



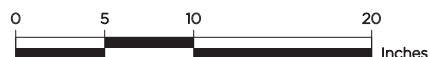
PLAN VIEW



FRONT VIEW



PROFILE VIEW



FISHER & PAYKEL

DATA SHEET Induction Cooktop, 36", Minimal Style

Model no:

C1365DTB4

(refer page 1 for imperial measurements)

Product Dimensions	mm
Ⓐ Overall height of cooktop	86
Ⓑ Overall width of cooktop	899
Ⓒ Overall depth of cooktop	530
Ⓓ Height of cooktop glass	6
Ⓔ Height of chassis including conduit junction	80
Ⓕ Width of chassis	858
Ⓖ Depth of chassis	484
Ⓜ Distance from side edges of cooktop to chassis	21
Ⓨ Distance from front edge of cooktop to chassis	13
Ⓩ Distance from back edge of cooktop to chassis	33
ⓧ Distance from rear of cooktop to center of conduit junction	35
Ⓛ Distance from right of cooktop to center of conduit junction	30

Product Clearances	mm
Minimum clearance from side edges of cutout to nearest combustible surface	30
Minimum clearance from rear edge of cutout to nearest combustible surface	35
Minimum clearance from counter top to top of any appliances, companion product or obstruction below cooktop*	85
Minimum clearance from glass surface to:	
- overhead cabinet centered above the cooktop (unprotected)	762
- overhead cabinet centered above the cooktop (protected)	610
- rangehood	650
Minimum clearance from glass surface to overhead cabinet not directly above cooktop	450
Minimum ventilation gap between bottom of counter and top of cabinetry fronts (not shown)	4

*Clearance for proud installation of the cooktop. For flush install the height of the cooktop glass needs to be added to the clearance.

NOTE: The oven installed below the cooktop MUST have a cooling fan. It is important that the induction cooktop receives adequate air supply. For ventilation requirements please refer to the installation manual.

Cutout Dimensions	mm
Overall width of cutout**	870
Overall depth of cutout***	494

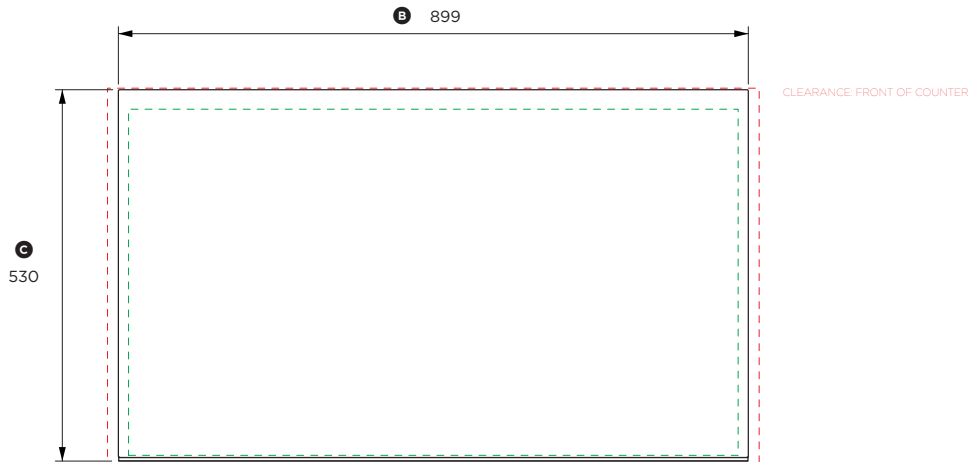
**NOTE: Cutout position is centered to the cooktop width

***NOTE: Cutout is offset 9mm from the front of the cooktop

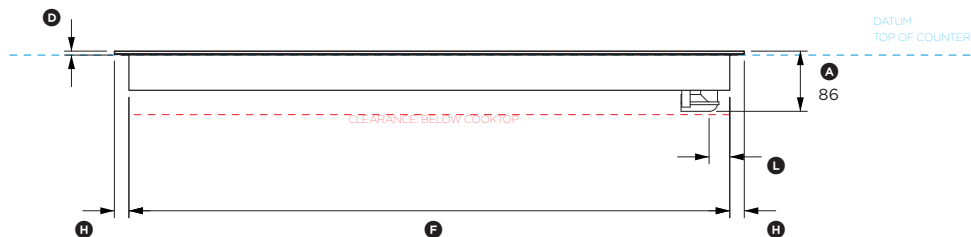
INDICATES CUTOUT -----
INDICATES CABINETRY / PRODUCT DATUM -----
INDICATES CABINETRY CLEARANCES - - - - -

DATE: 08.12.2021

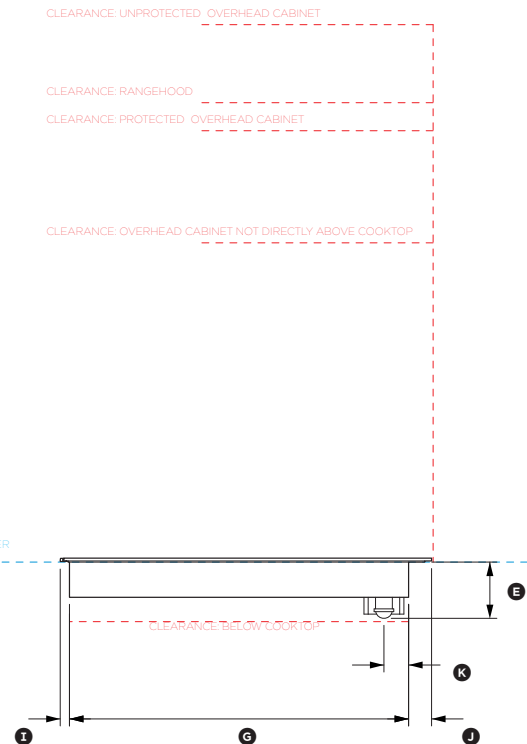
IMPORTANT NOTE: Throughout this guide, dimensions may vary by $\pm 2\text{mm}$ (1/16"). Please read the installation manual for detailed information on installing the product. For full installation instructions & specifications visit fisherpaykel.com



PLAN VIEW



FRONT VIEW



PROFILE VIEW

