

# 27HK510S-W IPS FHD Surgical Monitor

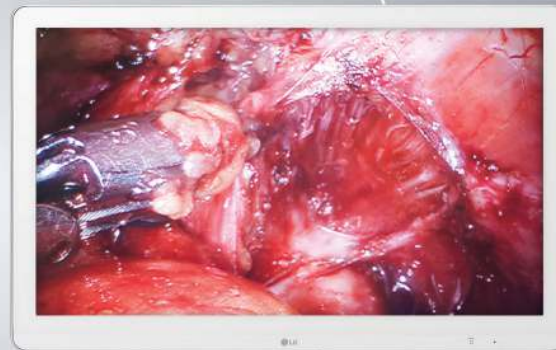


## ▶ 27HK510S-W

FDA Class 2  
27" Class (27.0" Diagonal)

### A DISPLAY OPTIMIZED FOR OPERATING ROOM

The superior detailed picture quality of the Full HD LG surgical monitor meets operating room needs with its 27-inch IPS display. This monitor enables detailed observation and allows multiple imaging applications to be displayed at once.



Images on screen are simulated



## FEATURES

### IPS & 99% OF SRGB

- The Full HD IPS monitor not only enables detailed observation of previously hard-to-see regions but also displays multiple imaging applications. In particular, the LG surgical monitor provides brightness and sRGB of 99% to ensure accurate color reproduction in the surgery room.

### DICOM PICTURE MODE & BRIGHTNESS STABILIZATION

- This display has a dedicated DICOM picture mode and brightness stabilization to address concerns of the National Electrical Manufacturers Association (NEMA) and the American College of Radiology (ACR) to facilitate quality medical imaging during surgical procedures.

### DYNAMIC SYNC MODE\*

- Since during an operation, a display takes a lot of heavy information from many other devices those tracking the real-time condition of the patient, therefore visual distracting caused.

\*Dynamic Sync Mode is only available to 60Hz input source.

### ANTI-REFLECTION & OPTICAL BONDING GLASS

- Optically bonded glass significantly reduces internal reflection between the cover glass and the LCD to enhance accuracy. Improved anti-reflection ability enables displays to look brighter and sharper for the highest image quality.

### DUST & WATER RESISTANT

- The LG's multi-coated IP35-rated glass is highly durable and protects the panel during surgical procedures.

## SPECIFICATIONS

Designed Specifically for the Operating Room

UL Medical Grade Listed

FDA Class 2

TAA Compliant

Native Display Resolution 1920 x 1080

Contrast Ratio 1000:1

14ms (Typ.) Response Time

Six Axis Control

Brightness Stabilization

VESA™ Compliant Wall Mountable

3-Year Limited Warranty Parts/Labor/Backlight

# 27HK510S-W

## IPS FHD Surgical Monitor

▶ 27HK510S-W

27" Class (27.0" Diagonal)



PANEL	MODEL	27HK510S-W
	Size (Inch / cm)	27"
	Panel Type	IPS
	Color Gamut (CIE1931) (Typ.)	sRGB 99%
	Color Depth (Number of Colors)	1.07 B (10bit)
	Pixel pitch (mm)	0.1554mm x 0.1554mm
	Aspect Ratio	16:9
	Resolution	1920x1080
	Brightness (Typ.)	1000cd/m <sup>2</sup>
	Contrast Ratio (Original) (DFC)	1000:1
	Response Time_Typ. (on/off) (GTG)	14ms (Typ) 5ms (High)
	Viewing Angle (CR≥10)	178/178
	Surface Treatment	With Air-Gap Bonding Glass (1.3T, 8H, Anti-Reflection, Anti-Finger)
SIGNAL INPUT	D-Sub	x1 (Includes 'Sync' signal)
	DVI-D	x2
	Composite	x1 (BNC)
	S-Video	x1
	Component	Share 'D-sub' port
	SDI	x1 (3G-SDI)
	HDMI	x1 (2.0)
	USB	USB 1 up/1 down (for HW calibration)
	Remote	RS-232C / RJ45
	Others	Equipotential Plug
	[ Jack Location ]	Rear
SIGNAL OUTPUT	DVI-D	x1
	SDI	x1 (3G-SDI)
	[ Jack Location ]	Rear
ELECTRICAL	Power Input Type	Adapter
	Power Input	100-240Vac, 50/60Hz
	Power Consumption: DC Off (Max)	0.3W
	H-Frequency (DVI-D)	30-83kHz
	V-Frequency (DVI-D)	56-61Hz
	H-Frequency (HDMI)	30-135kHz
	V-Frequency (HDMI)	56-61Hz
	Resolution	1920 x 1080
RESOLUTION	Digital (DVI-D)	1920 x 1080
	Digital (HDMI)	1920 x 1080
	DVI-D	1920 x 1080
	SDI	1920 x 1080
OSD	Country	Worldwide
	Number of Languages	17
CONTROL KEY	Key Number (Power Key Included)	10
	Key Type	Dome Tact
	Indicator LED Color (On mode)	Green
	Key LED Color	White (5/10/20sec, Always)
	[ Key Location ]	Front
	Picture Mode	Custom / Mono / sRGB / BT.709 / DICOM / Calibration1 / Calibration2
SPECIAL FEATURES	ORIGINAL RATIO	Yes
	PIP	Yes
	PBP	Yes
	SIX Axis Control	Yes
	Super Resolution+	Yes
	Gamma	Gamma 1.8, Gamma 2.0, Gamma 2.2, Gamma 2.4, Gamma 2.6, DICOM Gamma curve
	Color Temperature	6500K / 8500K / 9300K, Manual (5000K - 10000K)
	DICOM Mode	Yes (K <sub>D</sub> ≤ 10%)
	Factory Calibration	Yes (Delta E < 2, Gamma 1.8 ~ 2.6 / DICOM curve)

SPECIAL FEATURES	MODEL	27HK510S-W
	H/W Calibration (True Color Pro)	Yes (Calibration 1-2 Mode)
	Dynamic Sync Mode (Thru Mode)	Yes
	Flicker safe	Yes
	Brightness Stabilization	Yes
	Uniformity Compensation	Yes
	Black Stabilizer	Yes
	RS232	Yes
	DDC/CI	Yes
	HDCP	Yes (1.4)
	Key Lock	Yes
	Plug & Play	Yes
	Response Time Control	Yes
	Smart Energy saving	Yes
	DPM (auto Screen Off)	Yes
	Mechanical Switch	Yes
	User Preset	Yes
	Auto Resolution -> Dual EDID	Yes
	Color Calibrated	Yes
	Flicker safe	Yes
	Mechanical Switch	Yes
	Six Axis Control	Yes
	Smart Energy Saving	Yes
	Super Resolution+	Yes
	True Color Pro	Yes
	Anti-Microbial	Yes
MECHANICAL	Color - Front	White
	Color - Back	White
	Stand Included	No
	Dimensions	25.7" x 16.2" x 2.3"
	Packed Dimensions	29.3" x 19.5" x 6.0"
	Wall Mount size (mm)	200x100 / 100x100
	Weight	17.0 lbs
	Packed Weight	24.5 lbs
STANDARDS	FDA	FDA Class II (510K)
	CE MDD	CE MDD Class I REGISTRATION
	CMDR	Health Canada Class I REGISTRATION
	IEC	IEC60601-1
	cUL	ANSI/AAMI ES 60601-1 CSA CAN/CSA-C22.2 NO. 60601-1
	EN	EN60601-1
	CISPR	IEC60601-1-2
	EN	EN60601-1-2
	IEC	IEC60950-1
	CISPR	IEC60601-1-2
	FCC	FCC part 15 Class A
	ICES	ICES-003
	KC	KC
	EN	CCE
	Ingress Protection (Dust/Water-proof)	Front : IP35 / Back : IP32
	Impact Protection (Vandal-proof)	IK06
	HDMI	Yes
	RoHS	Yes
	REACH	Yes
	WEEE	Yes
ACCESSORIES	Power Cord	Yes with Adapter
	D-Sub	Yes
	DVI-D	Yes
	HDMI	Yes
	Manual	Yes
	Factory Calibration Report	Yes
	Graphic Card Guide	Yes
	CD-ROM	Yes - User Manual, Driver (Monitor, Calibrator), True Color Pro, Dual Control, On Screen Control 2.0
OTHER	UPC	7 19192 62421 4
	Warranty	3-Year Limited Warranty (Parts/Labor/Backlight)

<http://www.lg.com/us/business/commercial-display>  
<http://www.twitter.com/LGCommDisplays>  
<http://www.facebook.com/LGcommercialdisplays>  
<http://www.linkedin.com/company/lg-commercial-displays-usa>  
<http://www.youtube.com/lgcommercialdisplayusa>  
 800-897-8726 | IT Sales

LG Electronics U.S.A., Inc.  
 HE B2B Division  
 2000 Millbrook Drive  
 Lincolnshire, IL 60069

Customer Service: 888.865.3026  
[www.LG.com/us/commercial/display-support](http://www.LG.com/us/commercial/display-support)

Contact your LG Regional Sales Representative:  
 Sales Contact: 800.897.8726  
 E-mail: [info@LGSolutions.com](mailto:info@LGSolutions.com)

SPEC\_27HK510S-W\_011941\_PR

All screen images are simulated. Dimensions and weights are approximate. Design, specifications, and features subject to change without notice.

© Copyright 2019 LG Electronics USA, Inc. All rights reserved. LG and the LG logo are registered trademarks of LG Corp.

In Plane Switching is a trademark of LG Display Co., LTD. VESA is a trademark of Video Electronics Standards Association. HDMI, the HDMI logo and High-Definition Multimedia Interface are trademarks or registered trademarks of HDMI Licensing LLC. All other product and brand names are trademarks or registered trademarks of their respective companies.

