

LG SIGNATURE

OLED TV Usage and Management

Model : OLED97M3PUA

ENGLISH

Please read this manual carefully before operating your set and retain it for future reference.

www.lg.com

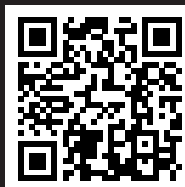
Printed in Korea

Copyright © 2023 LG Electronics Inc.

All Rights Reserved.



* M F L 7 1 9 4 6 3 5 8 2 3 0 6 R E V 0 2 *



Important Safety Instruction

- Read these instructions.
- Keep these instructions.
- Heed all warnings.
- Follow all instructions.
- Do not use this apparatus near water.
- Clean only with dry cloth.
- Do not block any ventilation openings. Install in accordance with the manufacturer's instructions.
- Do not install near any heat sources such as radiators, heat registers, stoves, or other apparatus (including amplifiers) that produce heat.
- Do not defeat the safety purpose of the polarized or grounding-type plug. A polarized plug has two blades with one wider than the other. A grounding type plug has two blades and a third grounding prong. The wide blade or the third prong are provided for your safety. If the provided plug does not fit into your outlet, consult an electrician for replacement of the obsolete outlet.
- Protect the power cord from being walked on or pinched particularly at plugs, convenience receptacles, and the point where they exit from the apparatus.
- Only use attachments/accessories specified by the manufacturer.
- Use only with the cart, stand, tripod, bracket, or table specified by the manufacturer, or sold with the apparatus. When a cart is used, use caution when moving the cart/apparatus combination to avoid injury from tip-over.



- Unplug this apparatus during lightning storms or when unused for long periods of time.
- Refer all servicing to qualified service personnel. Servicing is required when the apparatus has been damaged in any way, such as power-supply cord or plug is damaged, liquid has been spilled or objects have fallen into the apparatus, the apparatus has been exposed to rain or moisture, does not operate normally, or has been dropped.

By using this product, you agree that all disputes between you and LG arising out of or relating in any way to this product (including but not limited to warranty disputes) shall be resolved exclusively through binding arbitration on an individual basis. The terms of the arbitration agreement (including details on the procedure for resolving disputes) is available at www.lg.com/us/arbitration (USA) or www.lg.com/ca_en/arbitration (Canada).

Warning! Safety instructions



CAUTION : TO REDUCE THE RISK OF ELECTRIC SHOCK, DO NOT REMOVE COVER (OR BACK). NO USER-SERVICEABLE PARTS INSIDE. REFER TO QUALIFIED SERVICE PERSONNEL.

 This symbol is intended to alert the user to the presence of uninsulated “dangerous voltage” within the product’s enclosure that may be of sufficient magnitude to constitute a risk of electric shock to persons.

 This symbol is intended to alert the user to the presence of important operating and maintenance (servicing) instructions in the literature accompanying this apparatus.

WARNING : TO REDUCE THE RISK OF FIRE AND ELECTRIC SHOCK, DO NOT EXPOSE THIS PRODUCT TO RAIN OR MOISTURE.

- TO PREVENT THE SPREAD OF FIRE, KEEP CANDLES OR OTHER ITEMS WITH OPEN FLAMES AWAY FROM THIS PRODUCT AT ALL TIMES.
- **Do not place the product and/or remote control in the following environments:**
 - Keep the product away from direct sunlight.
 - An area with high humidity such as a bathroom.
 - Near any heat source such as stoves and other devices that produce heat.
 - Near kitchen counters or humidifiers where they can easily be exposed to steam or oil.
 - An area exposed to rain or wind.
 - Do not expose to dripping or splashing and do not place objects filled with liquids, such as vases, cups, etc. on or over the apparatus (e.g., on shelves above the unit).
 - Near flammable objects such as gasoline or candles, or expose the product to direct air conditioning.
 - Do not install in excessively dusty places.
 - On unsecured or high furniture, such as shelves or bookshelves.Otherwise, this may result in fire, electric shock, combustion/explosion, malfunction or product deformation.
- **Ventilation**
 - Install your product where there is proper ventilation. Do not install in a confined space such as a bookcase.
 - Do not install the product on a carpet or cushion.
 - Do not block or cover the product with cloth or other materials while unit is plugged in.
- Take care not to touch the ventilation openings. When watching the product for a long period, the ventilation openings may become hot.
- Keep a distance of at least 10 cm (3.9 inches) away from other objects so that the vents of the Zero Connect Box are not blocked.
 - An increase in the internal temperature of the product may result in fire and product failure.
- Protect the power cord from physical or mechanical abuse, such as being twisted, kinked, pinched, closed in a door, or walked upon. Pay particular attention to plugs, wall outlets, and the point where the cord exits the device.
- Do not move the product whilst the Power cord is plugged in.
- Do not use a damaged or loosely fitting power cord.
- Be sure to grasp the plug when unplugging the power cord. Do not pull on the power cord to unplug the product.
- Do not connect too many devices to the same AC power outlet as this could result in fire or electric shock.
- **Disconnecting the Device from the Main Power**
 - The power plug is the disconnecting device. In case of an emergency, the power plug must remain readily accessible.
- Do not let your children climb or cling onto the product. Otherwise, the product may fall over, which may cause serious injury.
- **Outdoor Antenna Grounding** (Can differ by country):
 - If an outdoor antenna is installed, follow the precautions below.

An outdoor antenna system should not be located in the vicinity of overhead power lines or other electric light or power circuits, or where it can come in contact with such power lines or circuits as death or serious injury can occur.

Be sure the antenna system is grounded to provide some protection against voltage surges and built-up static charges.

Section 810 of the National Electrical Code (NEC) in the U.S.A. provides information with respect to proper grounding of the mast and supporting structure, grounding of the lead-in wire to an antenna discharge unit, size of grounding conductors, location of antenna discharge unit, connection to grounding electrodes and requirements for the grounding electrode.

Antenna grounding according to the National Electrical Code, ANSI/NFPA 70

- Never touch this apparatus or antenna during a lightning storm. You may be electrocuted.
- Make sure the power cord is connected securely to the product and wall socket if not secured damage to the Plug and socket may occur and in extreme cases a fire may break out.
- Do not insert metallic or inflammable objects into the product. If a foreign object is dropped into the product, unplug the power cord and contact the customer service.
- Do not touch the end of the power cord while it is plugged in. You may be electrocuted.
- **If any of the following occur, unplug the product immediately and contact your local customer service.**
 - The product has been damaged.
 - If water or another substance enters the product (like an AC adapter, power cord, or product).
 - If you smell smoke or other odors coming from the product.
 - When lightning storms or when unused for long periods of time.

Even the product is turned off by remote control or button, AC power source is connected to the unit if not unplugged in.
- Do not use high voltage electrical equipment near the product (e.g., a bug zapper). This may result in product malfunction.
- Do not attempt to modify this product in any way without written authorization from LG Electronics. Accidental fire or electric shock can occur. Contact your local customer service for service or repair. Unauthorized modification could void the user's authority to operate this product.
- Use only an authorized attachments / accessories approved by LG Electronics. Otherwise, this may result in fire, electric shock, malfunction, or product damage.
- Never disassemble the AC adapter or power cord. This may result in fire or electric shock.
- Handle the adapter carefully to avoid dropping or striking it. Do not subject the adaptor to external shock. An impact could damage the adapter.
- To reduce the risk of fire or electrical shock, do not touch the product with wet hands. If the power cord prongs are wet or covered with dust, dry the power plug completely or wipe dust off.
- **Batteries**
 - Store the accessories (battery, etc.) in a safe location out of the reach of children.
 - Do not short circuit, disassemble, or allow the batteries to overheat. Do not dispose of batteries in a fire. Batteries should not be exposed to excessive heat.
 - Caution: Use the correct batteries for the product. Risk of fire or explosion if the battery is replaced by an incorrect type.
- **Moving**
 - When moving, make sure the product is turned off, unplugged, and all cables have been removed. It may take 2 or more people to carry larger products. Do not press or put stress on the front panel of the product. Otherwise, this may result in product damage, fire hazard or injury.
- Keep the packing anti-moisture material or vinyl packing out of the reach of children.
- Do not allow an impact shock, any objects to fall into the product, and do not drop anything onto the screen.
- Do not press strongly upon the panel with a hand or a sharp object such as a nail, pencil, or pen, or make a scratch on it. It may cause damage to screen.
- Do not hold the product screen, scratch the surface with a metal object, or apply impact to it.
 - The screen may break, resulting in personal injury or malfunction of the product.
- Do not push or kick the product.
- Do not place heavy objects on top of the product.
- Be careful if you have pets
- **Cleaning**
 - When cleaning, unplug the power cord and wipe gently with a soft/dry cloth. Do not spray water or other liquids directly on the product. Do not clean your product with chemicals including glass cleaner, any type of air freshener, insecticide, lubricants, wax (car, industrial), abrasive, thinner, benzene, alcohol etc., which can damage the product and/or its panel. Otherwise, this may result in electric shock or product damage.

Note

Reading the User Guide

The user guide consists of a 'Quick User Guide,' enclosed with your TV purchase, and an 'Electronic User Guide,' stored as a programme on the TV.

Quick User Guide

Contains safety precautions that must be complied with when using the TV, component installation methods, and external device connection methods.

- You can also download or view the Quick User Guide on digital devices such as PCs and mobile phones. Search for the model name in the user guide search bar on the LG Electronics website.
- If you lose or damage the Quick User Guide, call the LG Electronics Customer Center to request a replacement.

Electronic User Guide

To learn how to use various product features, press the remote control **Q.Settings button** (⚙️) and see the Electronic User Guide stored on the TV.

⚙️ → [⚙️] → [Support] → [User Guide]

- LG Electronics is not responsible for any damage to the product or injuries caused by using non-genuine LG products.
- TV components are subject to change without prior notice for performance upgrades. The model name or design may also be changed according to the circumstances or policies of the manufacturer.
- Images shown in this manual may differ from the actual product.

Optional Extras

Magic Remote Control: A Magic remote control with smart features such as voice recognition and motion control

Stand (SR-M3DT97): A stand for placing the TV screen vertically on the floor

Wall mount: A wall mount for fixing the TV screen to the wall

External device connection cable: Cables for connecting external devices such as antennas to the TV

- To make separate purchases, contact the LG Electronics Customer Service Center.

Before reading this manual

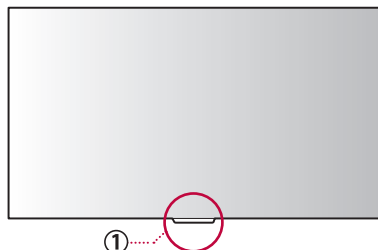
Understanding 60 GHz wireless

- Wireless TVs use 60 GHz radio waves to transmit high-quality video and audio wirelessly.
- The high bandwidth of 60 GHz frequencies is advantageous for large data transmission and has strong linearity but is greatly affected by obstacles.
- For the best TV viewing experience, the transmitting and receiving antennas should face each other, and there should be no obstacles in the transmission path.
- Transmission errors caused by obstacles are not malfunctions. Use the TV after properly installing it according to the recommended installation method.
- This product satisfies the standards for protecting the human body against electromagnetic waves*. (* Meets IEC 62311 standards)

Installing and Using

Examining the Appearance and Component Names of the Wireless TV (TV Screen + Zero Connect Box)

TV Screen



① Wireless signal receiver & Power button

This part receives the video and audio signals sent by the Zero Connect Box. The power button is used to turn the TV screen on, switch to Always Ready mode, and pair with the Zero Connect Box.

② Sliding button

The transmission direction of the Zero Connect Box antenna can be adjusted within a range of 0 to 50° up or down.

③ Dial

The wireless signal transmitter of the Zero Connect Box can be adjusted within a 90° range left or right.

④ Top LED

- Indicates the strength and status of the wireless signal.
- Blue (good), Green (normal), Yellow (weak), Red blinking (disconnected)

⑤ Wireless signal transmitter

The part with the antenna that transmits video and audio to the TV screen. The antenna's transmission direction can be adjusted up, down, left, or right using the sliding button and the dial.

⑥ Front LED

Indicates the power or operation status of the Zero Connect Box.

⑦ Voice recognition unit

The part that recognizes the user's voice. It may not function properly if this part is blocked or if commands are given from the side or back of the Zero Connect Box.

⑧ External connection terminal

You can connect the Zero Connect Box's power cord and external video/audio devices such as external antennas and set-top boxes.

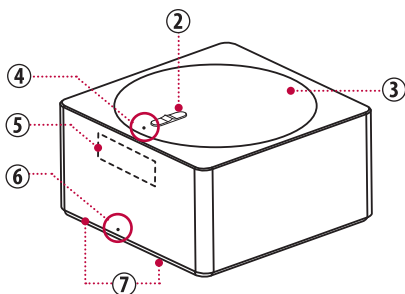
⑨ Pairing button

The product comes pre-paired, but if the normal screen does not appear, you need to pair it again.

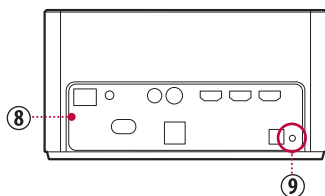
- To re-pair, press the pairing button on the back of the Zero Connect Box for 5 seconds. The top LED flashes white.
- If you press and hold the power button on the TV Screen for 5 seconds, the standby indicator of the screen's power unit flashes white. Once pairing is complete, the top LED on the Zero Connect Box changes to a color indicating signal strength.
- If pairing is not resumed within one minute, it will be cancelled and must be initiated again.

Zero Connect Box (WM23EA)

It is a device that wirelessly transmits video and audio signals to the TV screen by connecting an external antenna or set-top box.



Front and top views



Rear view

Installing the TV Screen

Installing as a stand

This method involves setting up the TV screen upright on the floor using a stand.

- Ensure a minimum distance of 30 cm (11.8 inches) between the TV screen and the ceiling, side walls, and the stand and the rear wall when installing.

Note

- If you pull the TV screen forward, it may fall and lead to damage or injury; therefore, ensure that it is secured to the wall.
- Install the screws on the back of the TV screen and the fixing hooks on the wall at the same level to prevent tilting. Then, use a sturdy strap to tie and secure the screws and fixing hook together. (Fixing hooks, screws, and straps are sold separately.)

Warning

- Do not apply foreign substances (oils, lubricants, etc.) to the screw parts when assembling the product. Doing so may cause damage to the product.
- Ensure that all screws provided are used when assembling the stand, and check that they are tightened fully. Incorrect assembly may cause the TV to tilt or fall, resulting in damage.
- Tightening the screws with excessive force may cause them to come off due to abrasion of the screw joint.

Caution

- Since the TV screen is heavy, at least two people should lift it vertically when unpacking or moving it.
- Do not move while holding the cable holder or cable organization band. Doing so may damage parts or the TV screen, or may cause injury. (Depending upon model)
- Do not forcibly tilt the TV screen. Doing so may cause it to fall and result in damage or injury.
- Take care to avoid getting your hands or fingers caught in the stand and injuring yourself.

Installing as a wall mount

This method involves installing the TV screen horizontally on the wall using a wall mount. Refer to the wall-mounting bracket guide provided separately for detailed information.

- To install the support, ensure that the wall is made of a material that can endure the weight of the TV Screen, such as concrete, natural stone, or masonry brick.
- Leave sufficient space around the product so that the ventilation vents of the TV screen are not blocked.

Note

- In the case of adhesive wall mounts, the TV screen may not adhere to the wall, depending upon the condition of the wall.
- LG wall mount products are recommended. If you use a wall mount not provided by LG, ensure that it provides sufficient distance from the wall.
- When using a fixed wall mount, connect the cables before installing the TV screen.
- You can organize the TV screen power cord using the dedicated cable management.

Caution

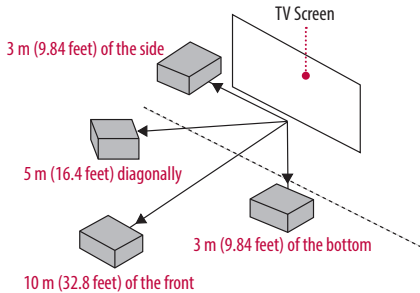
- When installing the TV screen, ensure that you wear work gloves. Installing with unprotected hands may result in injury.
- If you installed your TV screen with an adhesive wall mount, ensure that it is used only when adhered to the wall. The TV screen may wobble or tilt, causing damage.
- Do not install the wall mount in a place where it may come into contact with oil or oil vapour. Doing so may damage the TV screen.

Installing Zero Connect Box

1. Choosing the Installation Location

The Zero Connect Box can be installed in front, beside, below, or behind the TV screen. Follow the user guide for proper installation.

- Do not place obstacles between the TV Screen and Zero Connect Box. Doing so may interfere with wireless signal transmission and voice recognition functions.
- Install the Zero Connect Box lower than the wireless signal receiver of the TV screen.
- The transmission range of the Zero Connect Box varies depending upon the direction in which it faces the TV screen. Refer to the figure below and install it within the appropriate distance.



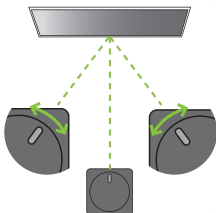
Note

- Do not install two wireless TVs or Zero Connect Boxes in the same room. They may interfere with one another.
- Do not place electronic devices or objects on top of the Zero Connect Box. Doing so may cause interference in transmission, resulting in screen display failure.
- When using a sound bar, ensure that it does not obstruct the wireless signal receiver of the TV screen.

2. Adjusting the Reception Direction (Left/Right & Up/Down)

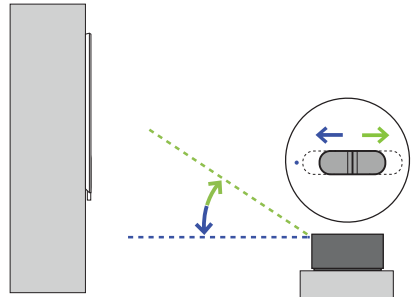
Dial

If the front LED of the Zero Connect Box is not facing the TV screen wireless signal receiver, you can adjust the wireless signal transmission direction of the Zero Connect Box from 0° to 90° left and right by turning the dial.



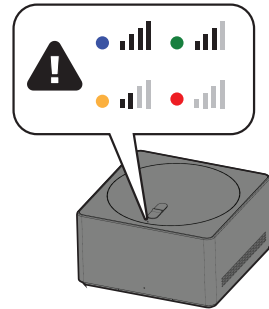
Sliding button

If the wireless signal transmission direction of the Zero Connect Box is not toward the wireless signal receiver of the TV screen, you can adjust the wireless signal transmission direction from 0° to 50° up and down by adjusting the sliding button.



3. Checking Wireless Signal Strength

After completing the basic placement and settings, turn on the TV and check the signal strength through the color of the top LED of the Zero Connect Box. The colors are blue (good), green (moderate), yellow (weak), and red (disconnected).



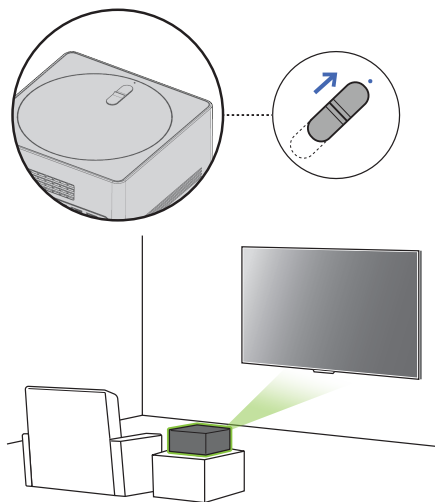
Note

- If the top LED turns red, check for obstacles in the transmission path and ensure that the product is installed properly in the correct location.
- If the top LED is yellow or green, use the dial and sliding button to verify that the reception direction of the Zero Connect Box is correctly set.
- The screen may not display after cleaning or moving the product as the installation environment may have changed. Check the color of the top LED of the Zero Connect Box and adjust accordingly.

Recommended installation methods

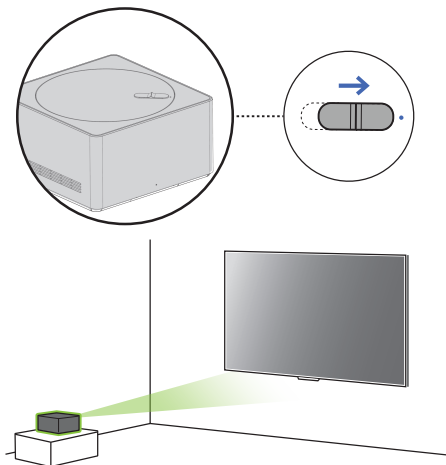
When Installing in a Straight Line in Front of the TV Screen

1. Before turning on the TV, ensure that the front LED of the Zero Connect Box is facing the **wireless signal receiver of the TV screen**.
2. If the front LED is not facing the wireless signal receiver of the TV screen, turn the dial on the top of the Zero Connect Box left or right to adjust the direction of the sliding button to face the wireless signal receiver.
3. Adjust the sliding button on the Zero Connect Box **towards the top LED**.
 - Once the dial and sliding button adjustments are completed, the signal transmission and reception path should be in the green direction shown in the figure.
4. After turning on the TV, check if the top LED color of the Zero Connect Box is blue.
 - If the LED is not blue, adjust the dial and sliding button further to optimize the signal condition.
 - Ensure that there are no obstacles in the antenna transmission path.
 - Install the Zero Connect Box within 10 m (32.80 feet) of the TV screen. (provided that there are no obstacles in the way.)
 - The signal transmission angle of the Zero Connect Box is 45° left and right. If your TV screen is outside 45°, please refer to the diagonal or side mounting method.



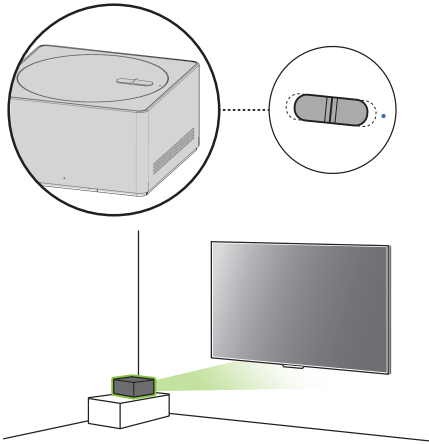
When Installing Diagonally in Front of the TV Screen

1. Before turning on the TV, ensure that the front LED of the Zero Connect Box is facing the **wireless signal receiver of the TV screen**.
2. If the front LED is not facing the wireless signal receiver of the TV screen, turn the dial on the top of the Zero Connect Box left or right to adjust the direction of the sliding button to face the wireless signal receiver.
3. Adjust the sliding button on the Zero Connect Box **towards the top LED**.
 - Once the dial and sliding button adjustments are completed, the signal transmission and reception path should be in the green direction shown in the figure.
4. After turning on the TV, check if the top LED color of the Zero Connect Box is blue.
 - If the LED is not blue, adjust the dial and sliding button further to optimize the signal condition.
 - Ensure that there are no obstacles in the antenna transmission path.
 - Install the Zero Connect Box within 5 m (16.40 feet) of the TV screen. (provided that there are no obstacles in the way.)



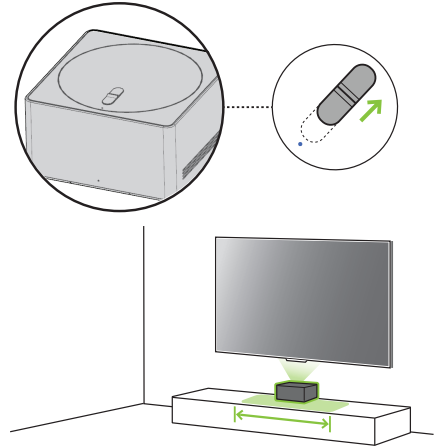
When Installing Beside the TV Screen

1. Before turning on the TV, ensure that the front LED of the Zero Connect Box is facing the **wireless signal receiver of the TV screen**.
2. If the front LED is not facing the wireless signal receiver of the TV screen, turn the dial on the top of the Zero Connect Box left or right to adjust the direction of the sliding button to face the wireless signal receiver.
 - If the front LED of the Zero Connect Box faces the viewing direction, turn the dial left or right until it is at a 90° angle.
3. Adjust the sliding button on the Zero Connect Box to the **Center**.
 - Once the dial and sliding button adjustments are completed, the signal transmission and reception path should be in the green direction shown in the figure.
4. After turning on the TV, check if the top LED color of the Zero Connect Box is blue.
 - If the LED is not blue, adjust the dial and sliding button further to optimize the signal condition.
 - Ensure that there are no obstacles in the antenna transmission path.
 - Install the Zero Connect Box within 3 m (9.84 feet) of the TV screen. (provided that there are no obstacles in the way.)
 - When using a floor stand, adjust the position so that the stand does not cover the wireless transmitter of the Zero Connect Box.



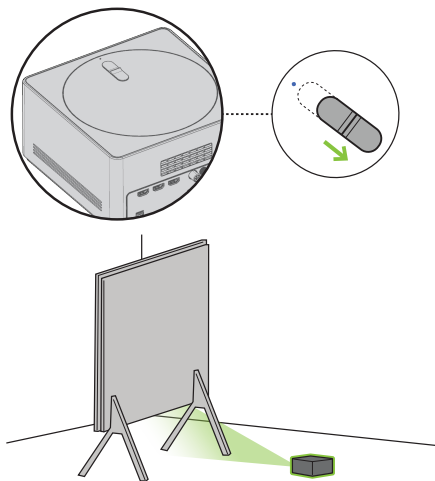
When Installing Below the TV Screen

1. Before turning on the TV, ensure that the front LED of the Zero Connect Box is aimed at **the viewer facing the TV screen**.
2. Turn the dial on the top of the Zero Connect Box left or right to adjust the direction of the sliding button towards the viewer.
3. Adjust the sliding button on the Zero Connect Box in the **opposite direction of the top LED**.
 - Once the dial and sliding button adjustments are completed, the signal transmission and reception path should be in the green direction shown in the figure.
4. After turning on the TV, check if the top LED color of the Zero Connect Box is blue.
 - If the LED is not blue, adjust the dial and sliding button further to optimize the signal condition.
 - Ensure that there are no obstacles in the antenna transmission path.
 - Install the Zero Connect Box within 3 m (9.84 feet) of the TV screen. (provided that there are no obstacles in the way.)
 - When installing the Zero Connect Box at the bottom of the TV screen, please do so within the area indicated in the figure.



When Installing Behind the TV Screen

1. Place the Zero Connect Box lower than **the wireless receiver of the TV screen**.
2. Before turning on the TV, ensure that the front LED of the Zero Connect Box is facing the wireless signal receiver of the TV screen.
3. If the front LED is not facing the wireless signal receiver of the TV screen, turn the dial on the top of the Zero Connect Box left or right to adjust the direction of the sliding button to face the wireless signal receiver.
4. Adjust the sliding button on the Zero Connect Box in the **opposite direction of the top LED**.
 - Once the dial and sliding button adjustments are completed, the signal transmission and reception path should be in the green direction shown in the figure.
5. After turning on the TV, check if the top LED color of the Zero Connect Box is blue.
 - If the LED is not blue, adjust the dial and sliding button further to optimize the signal condition.
 - Ensure that there are no obstacles in the antenna transmission path.
 - Install the Zero Connect Box within 1 m (3.28 feet) of the TV screen. (provided that there are no obstacles in the way.)
 - Position the Zero Connect Box between the legs of the floor stand so it is not obstructed.



Connecting External Terminals

You can connect external devices such as cables, HDMI, and set-top boxes to the TV. Press the **Input button** (Ⓜ) on the remote control, select [Home Hub], and find the device you wish to connect from the menu displayed on the screen.

- When used with an external device using a 60 GHz frequency, the screen may fail to display due to mutual interference.
- Set the appropriate resolution and frequency for the connected device. Failure to do so may cause straining of the eyes.
- The detailed installation method may vary depending upon the TV model.
- The TV may be capable of operating without a set-top-box from a multichannel video programming distributor (MVPD).

Installing Antenna/Cable

- Insert the coaxial cable that transmits audio/video signals into the antenna/cable input terminal on the back of the Zero Connect Box.
- Be careful not to bend the copper wire when connecting the coaxial cable.
- Use a signal amplifier if the signal is weak.
- When using one antenna for two or more TVs, use a signal splitter.

Note

- Do not apply oil or lubricant to the screws used during installation. Doing so may cause the TV to malfunction.
-

HDMI

- Use an HDMI certified cable (less than 3 m (9.84 feet)) with the HDMI logo (high-Speed HDMI[®]/TM cable).
- Turn off the power of the TV and all connected devices, and unplug them from the socket before connecting the HDMI cable.
- Connecting a device that supports the HDMI Ultra HD Deep color feature to the TV will provide a clearer image. If you connect a device that does not support this feature and enable the feature, it may not work properly. If problems arise, change the settings.

Note

- HDMI audio support formats may vary depending upon the TV model.
 - HDMI devices should have bezels less than 10 mm (0.39 inches) thick and 18 mm (0.7 inches) width.
-

USB / USB Hub

If the USB hub connected to the TV does not recognize USB devices, connect the USB directly to the TV terminal.

Note

- If the shapes of the TV terminal and the USB device do not match, use an extension cable that supports USB 2.0.
 - USB devices should have bezels less than 10 mm (0.39 inches) thick and 18 mm (0.7 inches) width.
-

IR Blaster

This is an infrared transmitter that allows smoother control of devices such as set-top boxes, Blu-ray players, DVD players, sound bars, and gaming consoles.

- If the Zero Connect Box is installed in a location other than the bottom of the TV, external devices may not be controlled smoothly with the TV remote control; therefore, connecting an IR blaster is recommended.
- Controlling the IR blaster requires an integrated remote control setting.
- Secure both ends of the IR blaster to the front (receiver) of the external device remote control using the tape provided.
- In order to control external devices through "Room to Room Share" and "Hands-free Voice Control", an IR blaster connection is required.

Wired LAN

- When connecting to a wired LAN, use a CAT 7 cable with high-speed Internet transmission. (Only when **LAN** port is provided.)
- TV audio can be transmitted to the sound bar (external audio device). When transmitting via wired methods (optical digital, HDMI ARC), connect to the rear external terminal of the Zero Connect Box, and when transmitting wirelessly (LG soundbar supporting the WOWCAST feature), use the WOWCAST feature. (Depending upon country)

Remote RS-232C setup


To obtain the RS-232C external control setup information, please visit www.lg.com. Download and read the manual, (Depending upon model).

Caution

- Do not drop the product or let it fall over when connecting external devices. Otherwise, this may result in injury or damage to the product.
- When connecting external devices such as video game consoles, make sure the connecting cables are long enough. Otherwise, the product may fall over, which may cause injury or damage the product.


Using the TV

Using the power button

Press the **power button** () located on the bottom of the TV briefly to turn the screen on and hold it to turn off all functions and the screen.

- Only use the power button when the TV screen and the Zero Connect Box are connected.
- The shape and location of the power button may vary depending upon the TV model.
- When you turn on the power for the first time after purchasing the product, it may take about 1 minute for the screen to turn on due to initialization.

Using hands-free voice control

- To use hands-free voice control, ensure that the front LED of the Zero Connect Box is facing the user, and turn the dial left or right so that the sliding button points towards the wireless receiver of the TV screen.
- Press the remote control **Q.Settings button** () to turn on hands-free voice control. The feature settings path may vary depending upon the TV model.

 → [] → [General] → [AI Service] → [Voice Recognition Settings] → [Hands-free Voice Control]

Managing

Protecting the OLED TV Screen

- Unlike general LED/LCD TVs, OLED TVs can display perfect black and produce clear images without light blurring.
- Due to the characteristics of OLED materials that provide high-resolution display, image retention may occur or persist, leaving an afterimage on the screen.
- Image retention is a common phenomenon in all OLED panels. Using the recommended viewing mode can minimize image retention.
- Avoid displaying images that are likely to cause image retention, and follow the recommendations.

Images that are likely to cause image retention

- Screen with black areas on one or more sides on the top, bottom, left or right
- Images whose aspect ratio is 4:3 or 21:9.
- Screens with images fixed for a long time, such as channel numbers, broadcast station logos, game console icons, or set-top box menus
- Other static screens or screens that repeat the same scene

Recommendations for Minimizing Image Retention

- When watching TV for extended periods, press the remote control **Q.Settings button** (⚙️) and configure the screen as follows.
 1. ⚙️ → [⊙] → [Picture] → [Select Mode] → [Auto Power Save]
 2. [Advanced Settings] → [Brightness] → [OLED Pixel Brightness] → Adjusting to Low
 3. ⚙️ → [⊙] → [General] → [OLED Care] → [OLED Panel Care] → [Adjust Logo Brightness] → [High]
- If there are black areas on one or more of the top, bottom, left, or right sides of the screen, press the remote control **Q.Settings button** (⚙️) to remove the black areas before watching.
- ⚙️ → [⊙] → [Picture] → [Aspect Ratio] → [User Selection] → [Vertical Zoom] or [4-Way Zoom]
- Turn off the menu for setting up external devices such as set-top boxes so that it is not displayed on the screen for a prolonged period.

Running Pixel Cleaning


OLED TVs are equipped with a pixel cleaning feature that detects screen conditions on its own to prevent retention.

- Pixel cleaning automatically calculates the optimal execution time based on cumulative viewing time and runs automatically when you turn off the TV.
- Horizontal lines may appear at the top and bottom of the screen during pixel cleaning.
- The pixel cleaning feature works when the TV is connected to the power cord and main power.
- Pixel cleaning can also be run manually by pressing the remote control **Q.Settings button** (⚙️).
- ⚙️ → [⊙] → [General] → [OLED Care] → [OLED Panel Care] → [Pixel Cleaning]


Note

- OLED TVs automatically lower screen brightness when a fixed image is received for an extended period and restore brightness once the fixed image is gone.
 - This is one of the features of the TV for minimizing image retention and is not a malfunction.
-

Troubleshooting

- If you notice any of the problems below while using the product, please check again. It may not be a fault.
- Before contacting the LG Electronics Service Center, press the  button on the remote control three times in TV/HDMI input mode to check the product model name and serial number. You will be able to receive faster assistance.

Power and Screen

The product does not turn on.	<p>» Is the power cord plugged in properly? Check if the power cord is plugged properly into the product and socket.</p> <p>» Is there a problem with the socket? Plug the power plug of another device into the socket where the product was plugged in to check if the socket is functioning properly.</p>
The product turns off suddenly.	<p>» Is the sleep timer set?  → [⊙] → [General] → [System] → [Time & Timer] → [Timers] → Set [Sleep Timer] / [Power Off Time] to [Off] / [Off].</p> <p>» Check if the external devices are working together. Stop using the external devices you are using together and check if the TV is working normally.</p> <p>» Did the auto-off feature work? This product is equipped with an auto-off function that automatically turns off the power if the remote control is not used for 15 minutes without an input signal.</p>
Dots on the screen.	<p>» Do you see white dots, bright dots, dark dots, or flickering dots on the screen? This product is an advanced product containing millions of pixels. You may see flickering dots of about 1/1,000,000 (1 PPM). These are not considered product defects or malfunctions.</p> <ul style="list-style-type: none"> • White Dots: dots that appear bright, • Bright Dots: dots that appear brighter than normal image • Dark Dots: dots which part of a letter or an object is invisible or blurry • Flickering Dots: Dots that flicker

Zero Connect Box Connection

A power connection image appears on the screen.	<p>» Is the Zero Connect Box connected properly? Ensure that the Zero Connect Box power cord is plugged firmly into the socket.</p>
A Zero Connect Box connection image appears on the screen.	<p>» Are there any objects interfering with the wireless signal transmission? Clear any objects between the TV screen and the Zero Connect Box.</p> <p>» Is the wireless signal from the Zero Connect Box properly oriented? Adjust the dial and sliding box on top of the Zero Connect Box according to the recommended installation method for each location of the Zero Connect Box.</p>

Hands-free Voice Control

Voice recognition is not working well.

» **Is the Hands-free Voice Control feature turned on?**

 →  → [General] → [AI Service] → [Voice Recognition Settings] → Set [Use Hands-free Voice Control] to On. (Depending upon model)

» **Is the front of the Zero Connect Box facing the user?**

Install the Zero Connect Box with its front facing the user, and rotate the dial left and right to adjust the direction of the sliding button towards the wireless signal receiver of the TV screen.

Motion Detection

In Always Ready mode, the motion sensor activates unnecessarily or fails to activate.

(Depending upon model)

» **Is the motion sensor clean?**

The motion sensor is located at the bottom center of the TV screen and may not function properly if covered with foreign substances. Wipe it clean with a soft cloth.


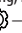
» **Is the surrounding area too bright or too dark?**

Maintain a suitable brightness level in the area where the product is installed.

» **Is there an object interfering with the motion sensor detection?**

Clear any objects in front of the TV screen.

» **Is the motion sensor too sensitive or insensitive?**

The motion sensor can activate when detecting changes in lighting, movements of pets, robot vacuum cleaners, and other objects as they are recognized as motions.  →  → [General] → [Always Ready] → Select [Enable the function], turn off the screen, and then stop using the motion sensor or adjust its sensitivity in [Always Ready Settings].

Noise

There is noise coming from the product.

» **Do you hear a "ticking" sound?**

This is the sound of the plastic deforming due to temperature and humidity. It is a common phenomenon in plastic products like furniture and cars; therefore, it is not a cause for concern.

» **Is the noise related to electricity?**

The sound is caused by the high-speed switching circuit that supplies current to the product, and it does not affect the functionality of the product.

» **Do you hear the fan noise from the Zero Connect Box?**

This is a normal sound created to dissipate heat generated inside the product.

* LG Electronics manages product production with strict standards, and noise below a certain level is not considered a product defect or malfunction.

Magic Remote Control

The remote control is not working.

» **Is there a connection problem with the product?**

Press and hold the  button and  button in the middle of the Magic remote control simultaneously for more than 5 seconds to re-register.

» **Are there any objects interfering with the wireless signal transmission?**

Clear any objects between the TV screen and the remote control.

» **Are the batteries inserted correctly?**

Ensure that the  side and  side of the battery are in the correct position. Replace both batteries with new ones when they run out.

Other

If any of the following issues occur, turn off the product, unplug the power plug from the socket and contact the LG Electronics Service Center for inspection. Do not repair the product yourself.

- If the product fails to display images or produce sound, even when the power is turned on
- If the product continues to display images or produce sound, even when the power is turned off
- If there is smoke or a burning smell coming from the product
- If water or a foreign substance gets into the product
- If the screen image appears to be cut off
- If the product makes repetitive sounds, such as a "buzzing" or "cracking" noise
- If there is any other problem or malfunction with the product

Product information

Broadcasting Specifications (Depending upon country)	Television system	ATSC, ATSC3.0 (Only USA), NTSC-M, 64 & 256 QAM
	Channel coverage (Band)	VHF 2-13, UHF 14-69, DTV 2-69, CATV 1-135, CADTV 1-135
	External antenna impedance	75 Ω
Environment Condition	Operating Temperature / Operating Humidity	0 °C to 40 °C (32 °F to 104 °F) / Less than 80 %
	Storage Temperature / Storage Humidity	-20 °C to 60 °C (-4 °F to 140 °F) / Less than 85 %
Conditions for Wall Mount Installation	Tilt Angle	0° - 15° (This specification applies only to products with an adjustable wall mount angle.)
Wireless Reception Conditions	Distance	3 - 10 m (9.84 -32.80 feet) (Only under conditions with no obstacles)
Power requirement		AC 120 V~ 50/60 Hz

Product specifications may be changed without prior notice due to upgrade of product functions.

Estimated yearly energy consumption indicated on the FTC label is measured in accordance with the Test Procedures for Television Sets (USA only).

The actual energy consumption depends on the usage environment (The content watched, TV settings, etc.).

- For information of the power supply and power consumption, refer to the label attached to the product.
 - The typical power consumption is measured in accordance with IEC 62087 or each country's energy regulations.
 - * On some models, the label is inside the external device connection terminal cover.
 - * Depending upon the model or country, the typical power consumption may not be on label.

Open Source Software Notice Information

To obtain the source code that is contained in this product, under GPL, LGPL, MPL, and other open source licenses that have the obligation to disclose source code, and to access all referred license terms, copyright notices and other relevant documents please visit <https://opensource.lge.com>.

LG Electronics will also provide open source code to you on CD-ROM for a charge covering the cost of performing such distribution (such as the cost of media, shipping, and handling) upon email request to opensource@lge.com.

This offer is valid to anyone in receipt of this information for a period of three years after our last shipment of this product.

Licenses



QUICKSET[®]

(Magic Remote supported models only)



Wireless module(LGSBWAX12)Specifications

Wireless LAN (IEEE 802.11a/b/g/n/ac/ax)

Frequency range	Output Power (Max.)
2,400 to 2,472 MHz	17 dBm
5,150 to 5,725 MHz	15 dBm
5,725 to 5,850 MHz	15 dBm
5,945 to 7,125 MHz	11 dBm

Bluetooth

Frequency range	Output Power (Max.)
2,400 to 2,483.5 MHz	9 dBm

As band channels can vary per country, the user cannot change or adjust the operating frequency. This product is configured for the regional frequency table.

For consideration of the user, this device should be installed and operated with a minimum distance of 20 cm (7.8 inches) between the device and the body.

- 1) FCC regulations restrict the operation of this device to indoor use only.
- 2) Operation prohibited on oil platforms, cars, trains, boats, and aircraft, except that operation of this device is permitted in large aircraft while flying above 10,000 feet.

FCC ID: BEJLGSBWAX12 / IC: 2703H-LGSBWAX12

This product contains a Type Approved Module by Jamaica : SMA - LGSBWAX12

Wireless module(LGSRFT1)Specifications

Frequency range	Output Power (Max.)
57.24 to 65.88 GHz	39 dBm

As band channels can vary per country, the user cannot change or adjust the operating frequency. This product is configured for the regional frequency table.

For consideration of the user, this device should be installed and operated with a minimum distance of 20 cm (7.8 inches) between the device and the body.

FCC ID : BEJLGSRFT1 / IC : 2703H-LGSRFT1

Wireless module(LGSRFR1)Specifications

Frequency range	Output Power (Max.)
57.24 to 65.88 GHz	37 dBm

As band channels can vary per country, the user cannot change or adjust the operating frequency. This product is configured for the regional frequency table.

For consideration of the user, this device should be installed and operated with a minimum distance of 20 cm (7.8 inches) between the device and the body.

FCC ID : BEJLGSRFR1 / IC : 2703H-LGSRFR1

Wireless module(LGSBT12)Specifications

Bluetooth

Frequency range	Output Power (Max.)
2,400 to 2,483.5 MHz	7.5 dBm

FCC ID: BEJLGSBT12 / IC: 2703H-LGSBT12

- * The actual frequency and maximum output power of the wireless TV may vary depending upon the standards specific to each country.

Regulatory

FCC NOTICE

(For USA)

This equipment has been tested and found to comply with the limits for a Class B digital device, pursuant to Part 15 of the FCC Rules. These limits are designed to provide reasonable protection against harmful interference in a residential installation. This equipment generates, uses, and can radiate radio frequency energy and, if not installed and used in accordance with the instructions, may cause harmful interference to radio communications. However, there is no guarantee that interference will not occur in a particular installation. If this equipment does cause harmful interference to radio or television reception, which can be determined by turning the equipment off and on, the user is encouraged to try to correct the interference by one or more of the following measures:

- Reorient or relocate the receiving antenna.
- Increase the separation between the equipment and the receiver.
- Connect the equipment to an outlet on a circuit different from that to which the receiver is connected.
- Consult the dealer or an experienced radio/TV technician for help.

This device complies with part 15 of the FCC Rules. Operation is subject to the following two conditions: (1) this device may not cause harmful interference and (2) this device must accept any interference received, including interference that may cause undesired operation. Any changes or modifications in construction of this device which are not expressly approved by the party responsible for compliance could void the user's authority to operate the equipment. and For indoor use only, use outdoors or in other modes not covered by this manual may violate the FCC regulation and violate the user authority to use the product.

FCC Radio Frequency Interference Requirements (for UNII devices)

(For USA)

High power radars are allocated as primary users of the 5.25 to 5.35 GHz and 5.65 to 5.85 GHz bands. These radar stations can cause interference with and/or damage this device. This device cannot be co-located with any other transmitter.

FCC RF Radiation Exposure Statement

(For USA)

(For having wireless function (WLAN, Bluetooth,...))

This equipment complies with FCC radiation exposure limits set forth for an uncontrolled environment. This transmitter must not be co-located or operating in conjunction with any other antenna or transmitter. This equipment should be installed and operated with minimum distance 20 cm (7.8 inches) between the antenna and your body. Users must follow the specific operating instructions for satisfying RF exposure compliance.

Industry Canada Statement

(For Canada)

(For having wireless function (WLAN, Bluetooth,...))

This device contains licence-exempt transmitter(s)/receiver(s) that comply with Innovation, Science and Economic Development Canada's licence-exempt RSS(s). Operation is subject to the following two conditions:

- (1) This device may not cause interference.
- (2) This device must accept any interference, including interference that may cause undesired operation of the device.

IC Radiation Exposure Statement

(For Canada)

(For having wireless function (WLAN, Bluetooth,...))

This equipment complies with IC radiation exposure limits set forth for an uncontrolled environment. This equipment should be installed and operated with minimum distance 20 cm (7.8 inches) between the antenna & your body.

NOTE: THE MANUFACTURER IS NOT RESPONSIBLE FOR ANY RADIO OR TV INTERFERENCE CAUSED BY UNAUTHORIZED MODIFICATIONS TO THIS EQUIPMENT. SUCH MODIFICATIONS COULD VOID THE USER'S AUTHORITY TO OPERATE THE EQUIPMENT.

RSS-247 Requirement

(For Canada)

(For product having the wireless function using 5 GHz frequency bands)

- (1) The device for operation in the band 5150–5250 MHz is only for indoor use to reduce the potential for harmful interference to co-channel mobile satellite systems;
- (2) For devices with detachable antenna(s), the maximum antenna gain permitted for devices in the bands 5250-5350 MHz and 5470-5725 MHz shall be such that the equipment still complies with the e.i.r.p. limit;
- (3) For devices with detachable antenna(s), the maximum antenna gain permitted for devices in the band 5725-5850 MHz shall be such that the equipment still complies with the e.i.r.p. limits as appropriate; and
- (4) (For devices operating in the band 5250-5350 MHz having an e.i.r.p. greater than 200 mW) Antenna type(s), antenna models(s), and worst-case tilt angle(s) necessary to remain compliant with the e.i.r.p. elevation mask requirement set forth in section 6.2.2.3 of RSS-247 shall be clearly indicated.

Users should also be advised that high-power radars are allocated as primary users (i.e. priority users) of the bands 5250-5350 MHz and 5650-5850 MHz and that these radars could cause interference and/or damage to LE-LAN devices.

NOTE TO CABLE/TV INSTALLER

(For USA and Canada)

This reminder is provided to call the CATV system installer's attention to Article 820-40 of the National Electric Code (U.S.A.). The code provides guidelines for proper grounding and, in particular, specifies that the cable ground shall be connected to the grounding system of the building, as close to the point of the cable entry as practical.

WARNING! (STABILITY HAZARD)

A television set may fall, causing serious personal injury or death. Many injuries, particularly to children, can be avoided by taking simple precautions such as:

- ALWAYS use cabinets or stands or mounting methods recommended by the manufacturer of the television set.
- ALWAYS use furniture that can safely support the television set.
- ALWAYS ensure the television set is not overhanging the edge of the supporting furniture.
- ALWAYS educate children about the dangers of climbing on furniture to reach the television set or its controls.
- ALWAYS route cords and cables connected to your television so they cannot be tripped over, pulled or grabbed.
- NEVER place a television set in an unstable location.
- NEVER place the television set on tall furniture (for example, cupboards or bookcases) without anchoring both the furniture and the television set to a suitable support.
- NEVER place the television set on cloth or other materials that may be located between the television set and supporting furniture.
- NEVER place items that might tempt children to climb, such as toys and remote controls, on the top of the television or furniture on which the television is placed.

If the existing television set is going to be retained and relocated, the same considerations as above should be applied.

Symbols

	Refers to alternating current (AC).		Refers to stand-by.
	Refers to direct current (DC).		Refers to "ON" (power).
	Refers to class II equipment.		Refers to dangerous voltage.

LG Take-back & Recycling Policy

(For USA)

LG Electronics offers a customized e-waste take-back & recycling service that meets local needs and requirements in the countries where e-waste regulations are in place, and also provides product take-back & recycling service voluntarily in some regions. LG Electronics evaluates products' recyclability at the design step selectively, with the goal of improving recyclability where practicable. Through these activities, LG Electronics seeks to contribute to conserving natural resources and protecting the environment. For more information, please visit our global site at <https://www.lg.com/recycling>

LG SIGNATURE

Supplier's Declaration of Conformity

Trade Name	LG
Responsible Party	LG Electronics USA, Inc.
Address	111 Sylvan Avenue, North Building, Englewood Cliffs, NJ 07632
E-mail	lg.environmental@lge.com

The model and serial number of the product are located on the back and on one side of the product. Record them below in case you ever need service.

Model _____

Serial No. _____

LG Customer Information Center

For inquiries or comments, visit www.lg.com or call;

1-800-984-6306	USA
1-888-542-2623	CANADA

Register your product Online!

www.lg.com