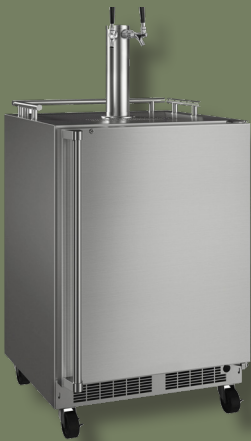


MOKR224

24" MOBILE BEVERAGE DISPENSER

MARVEL OUTDOOR COLLECTION



MAIN FEATURES

- 5.7 cu ft. capacity
- Stores up to 1 half barrel, 1 quarter barrel, 1 slim quarter barrel, 2 slim 1/6 barrels, or 2 cornelius kegs (cornelius ball-lock fitting not included)
- Beer & Beverage Dispensers are designed to work with CO2 for beer, cider, seltzer, soda and more
- Wine & Beverage Dispensers use nitrogen to dispense wine or other non-carbonated draft beverages
- CO2 or Nitrogen tank included
- Lo-Boy coupler makes it easier to store, tap and swap out tall U.S. type D barrels
- Includes 2 stow-on-board stainless steel shelves to store bottles and cans
- 4 casters included for mobility
- Secure gas tank storage area and drain basin
- Dynamic Cooling Technology delivers temperature stability
- Integrated drain system keeps spillage under control
- Double-insulated tower reduces foam during pour
- Digital controls allow you to select a temperature from 34°F to 60°F
- Door ajar and high/low temperature alerts
- Arctic white LED theater-style lighting
- Door lock provides added security
- Reversible door allows for right or left swing
- Designed for outdoor use

WARRANTY

- 1-year parts and labor warranty and 5-year sealed system parts warranty (see complete warranty for details)

FINISH OPTIONS



DOOR STYLE	MODEL NUMBER
Solid Stainless Steel (Single Beer & Beverage Tap)	MOKR224-SSA1A
Solid Stainless Steel (Twin Beer & Beverage Tap)	MOKR224-SSB1A
Solid Stainless Steel (Single Wine & Beverage Tap)	MOKR224-SSC1A
Solid Stainless Steel (Twin Wine & Beverage Tap)	MOKR224-SSD1A

BEER & BEVERAGE TAP



Single Tap      Twin Tap

WINE & BEVERAGE TAP



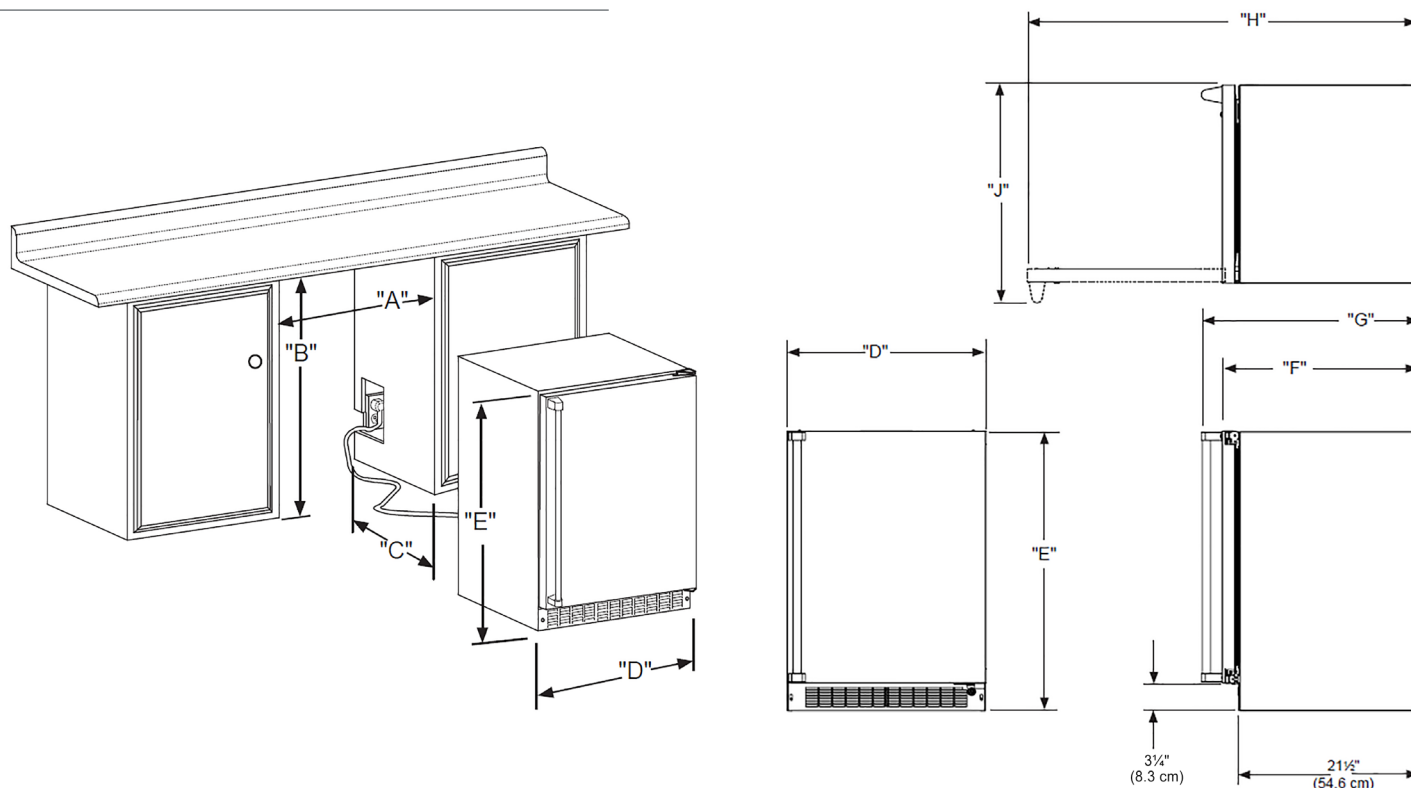
Single Tap      Twin Tap



MOKR224

## 24" MOBILE BEVERAGE DISPENSER

## DIMENSIONAL DRAWINGS



## ROUGH IN DIMENSIONS\*

"A"	"B"	"C"
24"	34" to 35"	24"
(61 cm)	(86.4 cm to 88.9 cm)	(61 cm)

## CABINET DIMENSIONS\*

"D"	"E"	"F"	"G"	"H"	"J"
23-7/8"	33-3/4" to 34-3/4"	23-3/4"	26-1/4"	46-3/8"	26-3/8"
(60.7 cm)	(84.5 cm to 87 cm)	(60.3 cm)	(66.2 cm)	(117.8 cm)	(67 cm)

## PRODUCT SPECIFICATIONS

<b>Capacity</b>	5.7 cu. ft.
<b>Cord Length</b>	6 f.t
<b>Electrical Requirements</b>	115V / 60 Hz / 15A
<b>ENERGY STAR</b>	No
<b>Refrigerant Type</b>	R600a
<b>Sabbath Mode</b>	Yes
<b>Shipping Dimensions</b>	28" W x 31" D x 37" H
<b>Shipping Weight</b>	160-179.5 lbs
<b>Temperature Range</b>	34°F to 60°F

For comprehensive installation instructions, please visit [marvelrefrigeration.com](http://marvelrefrigeration.com) to access the owner's guide. All specifications are subject to change without notice.

