

NAPOLEON

BUILT-IN GRILLS AND COMPONENTS

CREATE A 5-STAR MEAL WITHOUT LEAVING HOME.



YOUR INDOOR KITCHEN WILL WONDER WHERE YOU'VE BEEN. DON'T WORRY, WE WON'T TELL.



Napoleon takes the art of grilling to a higher level. Every feature, every material, is engineered to give the ultimate performance - so you can create unforgettable meals and memorable moments. And just like you, we're not some rookie behind the grill. Napoleon is a family-owned company with over 20 passionate years of grill-making experience. Every great meal starts with the best ingredients. Start yours with the best grill out there: Napoleon.



TABLE OF CONTENTS

Choose your Grill:

Prestige PRO™ and Prestige®	4 - 7
700 & 500 Series	8 - 11
Built-In Burners	12 - 13

Building Your Outdoor Kitchen:

Built-In Components	14 - 15
Oasis™ Modular Islands - <i>Choosing Your Configuration</i>	16 - 17
Oasis™ Modular Island Components	18
Oasis™ Modular Island - <i>Installation and Specifications</i>	19

Cooking with your Oasis™ / Built-In:

Essential Accessories	20 - 21
Specifications	22 - 23



PRESTIGE PRO™ BUILT-INS

PRESTIGE PRO™ Series Built-In Grills feature stainless steel construction and chrome accents for durable luxury.



Proudly Made In
Fièrement fabriqué au
CANADA



NAPOLÉON

Proximity light included on PRO models only

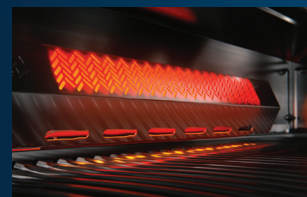




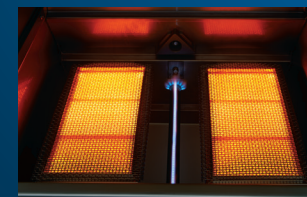
LED Spectrum **NIGHT LIGHT**
Control Knobs with **SafetyGlow**
The control knobs with
SafetyGlow turn to red when a
burner is in use



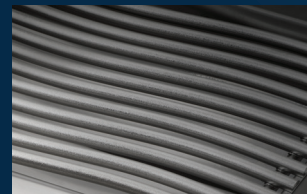
Instant **JETFIRE** Ignition
Easy to use ignition system
shoots a jet flame to light each
gas burner individually for quick
start-ups



Rear **Infrared**
Rotisserie Burner
Is perfect for creating meals
with the included rotisserie kit
and four forks



Infrared **SIZZLE ZONE**
Bottom Burners
(BIPRO825RBI)
Produce intense heat for even
searing and perfect grill marks



9.5 mm Stainless Steel
Iconic WAVE Cooking Grids
Contour design and construction
ensures consistent cooking



Dual-Level **Stainless Steel**
Sear Plates
The dual-level set up creates
even heat distribution and
protects the burners



Integrated **Wood**
Chip Smoker Tray
The smoker tray pulls out and is lit
with a dedicated gas tube burner
(BIPRO825RBI & BIPRO665RB)



Interior Grill Lights
Interior halogen lights illuminate
the cooking surface for
night-time grilling

PRESTIGE PRO™ AND PRESTIGE™ GRILLS



PRESTIGE PRO™ 825

BIPR0825RBI

Available in Propane BIPR0825RBIPSS-3 and Natural Gas BIPR0825RBINSS-3

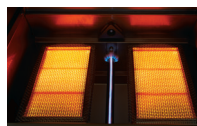
106,000 BTU's
 4 Stainless Steel Main Burners
 2 Infrared Bottom Burners
 1 Infrared Rear Burner
 1 Stainless Steel Smoker Tray Burner
 1 Stainless Steel Warming Burner
 Total Cooking Area: 1245 in² (8140 cm²)

Cart model available



Integrated **Wood Chip Smoker** Tray

The smoker tray pulls out and is lit with a dedicated gas tube burner



Infrared **SIZZLE ZONE** Bottom Burners

Produce intense heat for even searing and perfect grill marks



Rear **Infrared Rotisserie** Burner

Is perfect for creating meals with the included rotisserie kit and four forks



PRESTIGE PRO™ 665

BIPR0665RB

Available in Propane BIPR0665RBPSS-3 and Natural Gas BIPR0665RBNSS-3

86,000 BTU's
 5 Stainless Steel Main Burners
 1 Infrared Rear Burner
 1 Stainless Steel Smoker Tray Burner
 Total Cooking Area: 1000 in² (6510 cm²)

Cart model available



Integrated **Wood Chip Smoker** Tray

The smoker tray pulls out and is lit with a dedicated gas tube burner



Rear **Infrared Rotisserie** Burner

Is perfect for creating meals with the included rotisserie kit and four forks



PRESTIGE™ PRO 500

BIPR0500RB

Available in Propane BIPR0500RBPSS-3 and Natural Gas BIPR0500RBNSS-3

66,000 BTU's

4 Stainless Steel Main Burners

1 Infrared Rear Burner

Total Cooking Area: 760 in² (4880 cm²)

Cart model available



Rear **Infrared Rotisserie** Burner

Is perfect for creating meals with the included rotisserie kit and four forks



PRESTIGE® 500

BIP500RB

Available in Propane BIP500RBPSS-3 and Natural Gas BIP500RBNSS-3

66,000 BTU's

4 Stainless Steel Main Burners

1 Infrared Rear Burner

Total Cooking Area: 760 in² (4880 cm²)

Cart model available



Rear **Infrared Rotisserie** Burner

Is perfect for creating meals with the included rotisserie kit and two forks

700 & 500 SERIES

BIG44, BIG38, BIG32 & BI32

Made with 304 grade stainless steel and featuring seamless installation, the hub of your outdoor kitchen is as tough as it is beautiful. Stylish longevity, unparalleled performance.

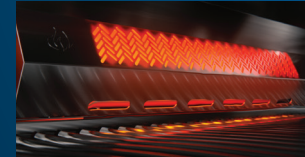




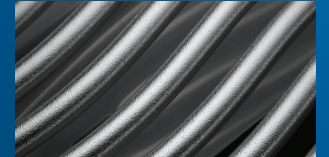
NIGHT LIGHT Control Knobs with **SafetyGlow**
The control knobs with **SafetyGlow** turn red when a burner is in use (700 Series Only)



Instant JETFIRE Ignition
Easy to use ignition system shoots a jet flame to light each gas burner individually for quick start-ups



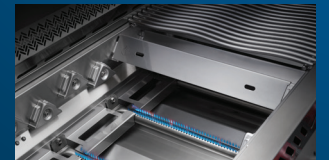
Rear Infrared Rotisserie Burner Commercial quality rotisserie kit and forks utilizing the rear infrared burner (700 Series Only)



9.5mm Shot Blasted Stainless Steel Iconic WAVE Cooking Grids
Contour design and construction ensures consistent cooking (7.5mm on 500 Series)



Dual Position Warming Racks
provide added space for warming, toasting or baking
(Two included on BIG44)



Dual-Level Stainless Steel Sear Plates
The multi-level set up creates even heat distribution and protects the burners (700 Series only)



Temperature Gauge With Smoke and Sear Range
Accurately measures the temperature of your grill for optimal temperature control



304 Stainless Steel
Construction with brushed stainless steel trim for seamless design



Trimless Design for Seamless Installation Built-in trim for better tolerance with cut-outs and no modifications to create a trimless design



Integrated Rotisserie Kit Storage On-hand for easy access for convenient rotisserie cooking

700 & 500 SERIES GRILLS



BUILT-IN 700 SERIES 44" BIG44RB

Available in Propane BIG44RBPSS and Natural Gas BIG44RBNSS

108,000 BTU's
6 Stainless Steel Main Burners
2 Infrared Rear Burners
Two Dual Position warming racks
Total Cooking Area: 1100 in² (7090 cm²)



Rear **Infrared Rotisserie** Burner

Is perfect for creating meals with the included rotisserie kit and four forks



BUILT-IN 700 SERIES 38" BIG38RB

Available in Propane BIG38RBPSS and Natural Gas BIG38RBNSS

78,000 BTU's
5 Stainless Steel Main Burners
1 Infrared Rear Burner
Total Cooking Area: 945 in² (6095cm²)



Rear **Infrared Rotisserie** Burner

Is perfect for creating meals with the included rotisserie kit and two forks



BUILT-IN 700 SERIES 32"

BIG32RB

Available in Propane BIG32RBPSS and Natural Gas BIG32RBNSS

60,000 BTU's
 4 Stainless Steel Main Burners
 1 Infrared Rear Burner
 Total Cooking Area: 785 in² (3385 cm²)



Rear **Infrared Rotisserie** Burner

Is perfect for creating meals with the included rotisserie kit and two forks



BUILT-IN 500 SERIES 32"

BI32

Available in Propane BI32PSS and Natural Gas BI32NSS

48,000 BTU's
 4 Stainless Steel Main Burners
 7.5 mm Stainless Steel Iconic WAVE™ Cooking Grids
 Total Cooking Area: 785 in² (3385 cm²)

BUILT-IN BURNERS



BUILT-IN 700 SERIES 18" DUAL INFRARED BURNER

BIB18IR

Available in Propane BIB18IRPSS
and Natural Gas BIB18IRNSS

30,000 BTU's
Infrared **SIZZLE ZONE™**
Cooking Area: 17.5" x 18"
Stainless Steel Protective Cover
9.5 mm Shot-blasted Stainless Steel
Iconic WAVE™ cooking grids



BUILT-IN 700 SERIES 18" POWER BURNER

BIB18PB

Available in Propane BIB18PBPS
and Natural Gas BIB18PBNSS

60,000 BTU's
Inner ring burner: 25,000 BTU's
Outer ring burner: 35,000 BTU's
Dual Ring Range Burner for
two-setting heat control
Cooking Area: 17.5" x 18"
Stainless Steel Protective Cover
9.5 mm Stainless Steel Rod cooking
grid and features removable center
ring for wok cooking



BUILT-IN 700 SERIES 18" DUAL RANGE BURNER

BIB18RT

Available in Propane BIB18RTPSS
and Natural Gas BIB18RTNSS

30,000 BTU's
Dual Range Burners
Cooking Area: 17.5" x 18"
Stainless Steel Protective Cover
9.5 mm Shot-blasted Stainless
Steel **Iconic WAVE™** cooking grids



BUILT-IN 700 SERIES 12" INLINE DUAL RANGE BURNER

BIB12RT

Available in Propane BIB12RTPSS
and Natural Gas BIB12RTNSS

30,000 BTU's
Inline Dual Range Burners
Cooking Area: 11.5" x 18"
Stainless Steel Protective Cover
9.5 mm Shot-blasted Stainless Steel
Iconic WAVE™ cooking grids

FINDING THE PERFECT STEAK.

When buying a large steak, choose one that has a uniform thickness of about 1½". Buy a top quality cut that is well marbled to ensure tenderness. The better the quality of beef, the tastier your steak will be. For a quick sauce, jazz up store-bought BBQ sauce by adding chopped chillies, a little Worcestershire sauce, a splash of vinegar, some chopped fresh onions or garlic, or get creative.





BUILT-IN 700 SERIES 10" SINGLE INFRARED DROP-IN BURNER

BIB10IR

Available in Propane BIB10IRPSS
and Natural Gas BIB10IRNSS

10,000 BTU's
Infrared **SIZZLE ZONE™**
Cooking Area: 9" x 10.5"
Stainless Steel Protective Cover
7.5 mm Shot-blasted Stainless Steel
Iconic WAVE™ cooking grids



BUILT-IN 700 SERIES 10" SINGLE RANGE DROP-IN BURNER

BIB10RT

Available in Propane BIB10RTPSS
and Natural Gas BIB10RTNSS

10,000 BTU's
Single Range Burner
Cooking Area: 9" x 10.5"
Stainless Steel Protective Cover
7.5 mm Shot-blasted Stainless Steel
Iconic WAVE™ cooking grids



BUILT-IN 500 SERIES 12" INLINE DUAL RANGE BURNER

BI12RT

Available in Propane BI12RTPSS
and Natural Gas BI12RTNSS

30,000 BTU's
Dual Inline Range Burners
Cooking Area: 11.75" x 18"
Stainless Steel Protective Cover
7.5 mm Shot-blasted Stainless Steel
Iconic WAVE™ cooking grids



BUILT-IN 500 SERIES 10" SINGLE RANGE BURNER

BI10RT

Available in Propane BI10RTPSS
and Natural Gas BI10RTNSS

10,000 BTU's
Single Range Burner
Cooking Area: 9" x 10.5"
Stainless Steel Protective Cover
7.5 mm Shot-blasted Stainless Steel
Iconic WAVE™ cooking grids

NOTE: To provide power to the 700 Series Burner NIGHT LIGHT™ control knobs N370-1091-SER - Power Supply Kit is required when a Built-in 700 Series burner is installed without connecting to a Built-in 700 Series Grill. N750-0087 - 3ft Extension Wire is required if a Built-in 700 Series burner is installed beyond 3ft of a Built-in 700 Series Grill.

BUILT-IN COMPONENTS



42" X 24" SINGLE DOOR & TRIPLE DRAWER
BI-4224-1D3DR



42" X 24" SINGLE DOOR & DOUBLE DRAWER
BI-4224-1D2DR



42" X 24" SINGLE DOOR & WASTE BIN DRAWER AND PAPER TOWEL HOLDER
BI-4224-1D1W



36" X 24" SINGLE DOOR & TRIPLE DRAWER
BI-3624-1D3DR



36" X 24" SINGLE DOOR & DOUBLE DRAWER
BI-3624-1D2DR



36" X 24" SINGLE DOOR & WASTE BIN DRAWER AND PAPER TOWEL HOLDER
BI-3624-1D1W



18" X 24" DOUBLE DRAWER
BI-1824-2DR



18" X 24" TRIPLE DRAWER
BI-1824-3DR



18" X 24" WASTE BIN DRAWER AND PAPER TOWEL HOLDER
BI-1824-1W



18" X 16" DOUBLE DRAWER
BI-1816-2DR



18" X 24" REVERSIBLE SINGLE DOOR
BI-1824-1DR



42" X 8" SINGLE DRAWER
BI-4208-1DR



18" X 8" SINGLE DRAWER
BI-1808-1DR



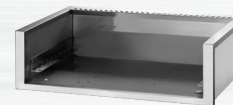
42" X 16" DOUBLE DOOR
DESIGNED FOR:
BUILT-IN 44" GRILL (BIG44RB)
BI-4216-2D



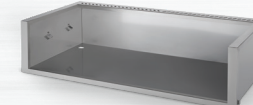
36" X 16" SMALL DOUBLE DOOR
BI-3616-2D



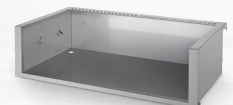
30" X 16" DOUBLE DOOR
DESIGNED FOR:
BUILT-IN 32" GRILL (BIG32RB)
BI-3016-2D



33" ZERO CLEARANCE LINER
DESIGNED FOR: PRESTIGE/PRO 500 SERIES
BI-3323-ZCL



44" ZERO CLEARANCE LINER
DESIGNED FOR:
BUILT-IN 44" GRILL (BIG44RB)
BI-4823-ZCL



38" ZERO CLEARANCE LINER
DESIGNED FOR:
BUILT-IN 38" GRILL (BIG38RB)
BI-4223-ZCL

Stainless steel construction
Integrated hangers for balanced installation
Used for more versatile installation in a wide range of materials and finishes

ZERO CLEARANCE LINERS

Expand design horizons with zero clearance liners allowing for more finishing material options on your custom outdoor kitchen. Each is constructed of 304 grade stainless steel and feature integrated balancing brackets.





42" X 16" SINGLE DOOR & DOUBLE DRAWER

DESIGNED FOR:
BUILT-IN 44" GRILL (BIG44RB)
BI-4216-1D2DR



36" X 16" SINGLE DOOR & DOUBLE DRAWER CABINET

DESIGNED FOR:
BUILT-IN 38" GRILL (BIG38RB)
BI-3616-1D2DR



36" X 24" DOUBLE DOOR

BI-3624-2D



30" X 24" DOUBLE DOOR

BI-3024-2D



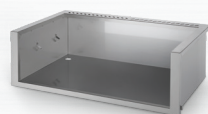
18" X 24" SINGLE DOOR

BI-1824-1D



18" X 16" SINGLE DRAWER

BI-1816-1DR



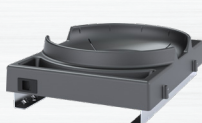
32" ZERO CLEARANCE LINER

DESIGNED FOR: BUILT-IN 32" GRILL
(BIG32RB / BI32)
BI-3623-ZCL



18" ZERO CLEARANCE LINER

DESIGNED FOR: BUILT-IN 18" BURNERS
(BIB18IR | BIB18RT | BIB18PB)
BI-2423-ZCL



SLIDE-OUT PROPANE TANK KIT

BI-TSK



BEVERAGE CENTER

BI-2418-BEV

Napoleon has a vast offering of Built-in components to customize your grill island.

Many options of door and drawer components, propane tank slider kits and zero clearance liners. The sleek stainless steel components complement any design.

- » Soft-closing cabinet doors and drawers
- » Seamless trim around all components provides flawless finish
- » Versatile solutions for endless design opportunities
- » Anodized aluminum handles



BI-4224-1D1W shown: 42" x 24" large door & waste bin drawer and paper towel holder with Napoleon stamp detail inside components

OASIS™ MODULAR ISLANDS

Choosing your configuration possibilities

1

Select your Grill

Choose from Napoleon's line of grills ranging in sizes and features. Feed a crowd of up to 52 people with the Prestige PRO™ 825 boasting a wide range of cooking methods from rotisserie grilling, smoking, and infrared grilling. If you're looking for something more economical, try the Built-in PRO™ 500 Grill with four main burners and a cooking area that feeds up to 31 people.



2

Select your Shape with Cabinets

Napoleon makes it easy with four configuration package options; the 100, 200, 300, and 400. You just have to select the desired cabinets starting with the under grill cabinet for your selected grill, and then the remaining cabinets. The 100 and 200 packages consist of 3 cabinets each, the 300 and 400 consist of 5 cabinets each. Remember that configuration possibilities are endless so you can add as many cabinets as needed to complete the outdoor oasis of your dreams.



3

Select your Top

To complete your outdoor oasis, you will need a finishing countertop. Consider stylish yet durable materials like granite or other stone that will hold up to harsh outdoor elements. Napoleon does not provide countertops so refer to your local authorized Napoleon dealer for assistance and inspiration.



Please use manual to properly assemble your built-in grill. Refer to the main manual for operating, cleaning, and maintenance instructions. This grill is designed for non-combustible enclosures only, and must be installed and serviced by a qualified installer to local codes. Drawings for reference only. Minimum 6" clearance required between grill and other appliance. Specifications subject to change without notice.

* Additional clearance may be required for openings. See owners manual

LATE NIGHT ENTERTAINING

Being the biggest fans of BBQ, Napoleon feels you should always be able to enjoy your favorite grilled meal and we have developed technology that makes every meal better and more easily prepared. You can entertain into the late hours with features such as interior grill lights and NIGHT LIGHT™ control knobs that illuminate for easy grilling and food preparation. Wishing you many unforgettable meals – grilled to perfection.

**THE NAPOLEON OASIS™
MODULAR ISLAND SERIES
HAVE BEEN DEVELOPED WITH
VERSATILITY IN MIND.**



100



200



300

PERSONALIZE YOUR OUTDOOR LIVING SPACE WITH THE LUXURIOUS OASIS™ MODULAR ISLANDS

Choose the modules that fit your lifestyle and your budget. The cabinets can be assembled in virtually any combination to suit your individual needs. All cabinets are 35 ½" tall and 24" deep with 4 leveling feet for easy adjustment on any surface. The OASIS™ OUTDOOR MODULAR ISLAND series can be assembled against any non-combustible wall of your home or as a standalone island.



400

OASIS™ MODULAR ISLAND COMPONENTS



**UNDER GRILL CABINET FOR:
BIPRO825RBI**
IM-UGC825-CN



**UNDER GRILL CABINET FOR
BIPRO665RB**
IM-UGC665-CN



**UNDER GRILL CABINET FOR
BIPRO500RB & BIP500RB**
IM-UGC500-CN



**UNDER GRILL CABINET
FOR BIG32 & BI32**
IM-UGC32-CN



**UNDER GRILL CABINET
FOR BIG38RB**
IM-UGC38-CN



**UNDER GRILL CABINET
FOR BIG44RB**
IM-UGC44-CN



**UNDER GRILL CABINET
FOR BIB18IR, BIB18RT
& BIB18PB**
IM-UGC18-CN



**THREE DRAWER
CABINET**
IM-3DC-CN



TWO DRAWER CABINET
IM-2DC-CN



**WASTE DRAWER WITH
PAPER TOWEL HOLDER**
IM-WDC-CN



**PROPANE TANK OR
UNIVERSAL CABINETS**
IM-UTC-CN (SHOWN), IM-UDC-CN
LEFT OR RIGHT OPENING



**OUTDOOR RATED STAINLESS
STEEL FRIDGE**
NFR0550USS



**OASIS™ 45° LARGE
TRANSITION PIECE**
IM-45LT-CN DESIGNED FOR:
BIPRO665, BIPRO825 AND 18" BURNERS



WALL SPACER
IM-WSF-CN



CABINET TRANSITIONS
IM-45T-CN = 45°
*MUST USE IM-45LT-CN FOR BIPRO665,
BIPRO825 AND 18" BURNERS*



CABINET END PANEL
IM-CEP-CN



FRIDGE END PANEL
IM-FEP-CN

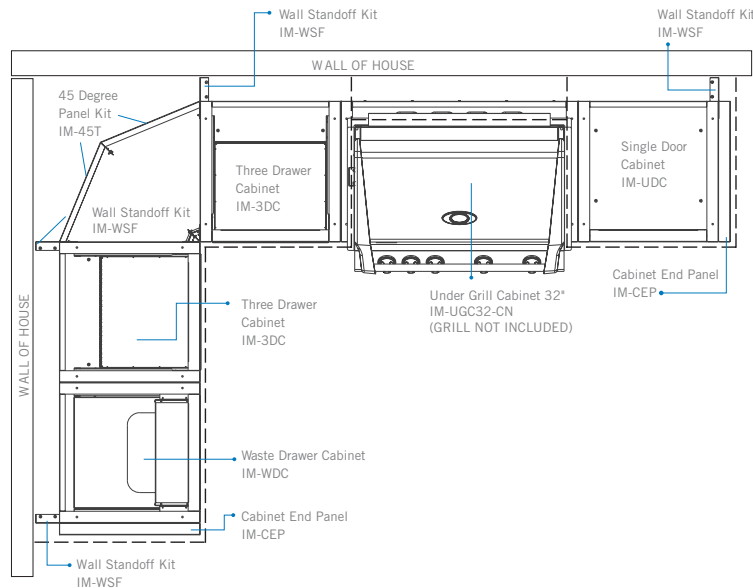


FRIDGE MID PANEL
IM-FMP-CN



The countertop* material must be non-combustible if a grill is to be installed into it. They can be ordered in advance by drawing out the floor plan of how the cabinets will be situated and adding up the width measurements, allowing 1-2" of countertop overhang. Most countertop manufacturers are willing to come and take measurements after assembly of the cabinets is complete to ensure a perfect fit. For best results the countertop thickness should be between ¾" to 1 ½" thick. The built-in grill comes with stainless steel brackets and hardware that allow the unit to rest on the countertop above the corresponding island cabinet for that unit. Granite is an excellent choice of countertop materials. Decorative countertops made of ceramic tile set on top of cement tiling board can be selected to match your surrounding backyard furniture color. *Countertops must be ordered and supplied locally by the homeowner.

PLAN YOUR OASIS™



NIGHTLIGHT®
Control Knobs
with SafetyGlow

304 Stainless Steel
Construction

TRIMLESS DESIGN
FOR SEAMLESS INSTALLATION

Integrated
Rotisserie
Kit Storage

THE MOST VERSATILE COOKING STYLES AVAILABLE



DIRECT COOKING VS. INDIRECT COOKING

Direct Cooking This method of cooking places the food right above the lit burners "GRILLING" style. The direct heat from the flame quickly cooks the outside of the food, which is perfect for searing steaks, other meats and vegetables. Keeping the lid down reduces the cooking time and cooks through to the center faster than with the lid up. Anything that is less than two inches in thickness should be cooked by direct grilling. These are foods that generally cook quickly and benefit from the fast cooking of a hot grill. Front to back burners were designed for precise heat control, allowing for independent use of each cooking zone.

Rotisserie Cooking uses a rod to slowly rotate the food while it is roasted. This method allows the food to self-baste, as drippings hold to the surface by the rotating motion, sealing in the juices while browning the outside. Use the rotisserie method of cooking for large cuts of meat like roasts, poultry or legs of lamb. There are so many advantages to rotisserie cooking at it requires much less attention than other cooking methods, and meats are generally juicier, self-basted and slow roasted. The rear rotisserie burner is a nice feature because it automatically sets you up for direct, even heating.

Indirect Cooking Indirect grilling is similar to baking. The food is placed above the unlit burner instead of directly over the flame. This can be achieved by only igniting some of the burners — light one side on high and cook the food on the other. The food will cook more evenly as it is not exposed to direct heat from the burners. This is an excellent way to cook tough cuts of meat, like brisket and ribs, that require long, slow cooking at a low or moderate heat. Indirect grilling allows you to work over a more moderate temperature (275° to 350°) and makes it easy to introduce a smoker pipe for extra flavor. For chicken, game, turkey, roasts, ham, vegetables, bread or combinations, the indirect cooking method gives great results every time. There is little need to turn the food. You can place the food directly on the grids or in a cooking pan.

Infrared Bottom Burner Cooking Do you want to make the perfect steak? The intense 1800° heat instantly sears the meat, locking in the juices. Larger cuts of meat may be moved to the side of the grill to continue cooking.

Smoking Place wet wood chips into the smoker tube and place over the left burner, then turn the burner on. Place your meat over the right burner, but do not turn on that burner. You are using the indirect cooking method. Smoke the meat for several hours under a closed lid. To achieve maximum flavor, fresh wood chips may be added several times during the cooking process.

Charcoal Cooking Unique to Napoleon! Optional charcoal trays give you the freedom to switch from gas to charcoal with relative ease. With charcoal you can utilize indirect cooking as well as direct cooking.

ESSENTIAL ACCESSORIES

New accessories and compatible products designed for the New Built-in 700 & 500 Series

GRILL COVERS



**BIPRO825RBI
GRILL COVER**

(BIPRO825RBI)
61826



**BIPRO665RB
GRILL COVER**

(BIPRO665RB)
61666



**BIP500RB &
BIPRO500RB
GRILL COVER**

(BIPRO500RB & BIP500RB)
61501



**BUILT-IN 44"
GRILL COVER**

(BIG44RB)
61842



**BUILT-IN 38"
GRILL COVER**

(BIG38RB)
61836



**BUILT-IN 32"
GRILL COVER**

(BIG32RB & BI32)
61830

BURNER COVERS



**BUILT IN SIDE BURNER
COVER FOR 10"**

(BIB10IR, BIB10RT & BI10RT)
61810



**BUILT IN SIDE BURNER
COVER FOR 12"**

(BIB12IR, BIB12RT & BI12RT)
61812



**BUILT IN SIDE BURNER
COVER FOR 18"**

(BIB18PB, BIB18IR & BIB18RT)
61818



**ADD-ON ROTISSERIE KIT WITH 2PC ROTISSERIE
FORKS AND COMMERCIAL QUALITY MOTOR**

DESIGNED FOR: BUILT-IN 44" GRILL (BIG44RB)
69851



COMPATIBLE ACCESSORIES

✓ Outdoor cooking accessories that fit all Built-In Series Grills



CAST IRON CHARCOAL AND SMOKER TRAY
67732



GRILL LIGHT
70049



ROTISSERIE RACK
64005



STAINLESS STEEL SMOKER BOX
67013



ROTISSERIE SHISH-KEBAB SKEWER SET
64008



ROTISSERIE GRILL BASKET
64000



Visit napoleon.com to see Napoleon's complete line of grilling accessories.

SPECIFICATIONS

DOORS, DRAWERS & ACCESSORIES (opening size for installation)	Part Number	Width in. (cm)	Depth in. (cm)	Height in. (cm)
18" x 8" Single Drawer	BI-1808-1DR	18 ¾ (47)	22 ¾ (58)	8 ¾ (22)
18" x 16" Single Drawer	BI-1816-1DR	18 ¾ (47)	22 ¾ (58)	16 ¾ (43)
18" x 16" Double Drawer	BI-1816-2DR	18 ¾ (47)	22 ¾ (58)	16 ¾ (43)
18" x 24" Reversible Single Door	BI-1824-1D	18 ¾ (47)	3 (8)	24 ¾ (63)
18" x 24" Waste Bin Drawer	BI-1824-1W	18 ¾ (47)	22 ¾ (58)	24 ¾ (63)
18" x 24" Double Drawer	BI-1824-2DR	18 ¾ (47)	22 ¾ (58)	24 ¾ (63)
18" x 24" Triple Drawer	BI-1824-3DR	18 ¾ (47)	22 ¾ (58)	24 ¾ (63)
Beverage Center	BI-2418-BEV	24" (61)	18 (46)	10 ½ (27)
30" x 24" Double Door	BI-3024-2D	30 ½ (77)	3 (8)	24 ¾ (63)
36" x 16" Double Door	BI-3616-2D	36 ½ (93)	3 (8)	16 ¾ (43)
30" x 16" Double Door	BI-3016-2D	30 1/2 (78)	3 (8)	16 3/4 (43)
36" x 16" Single Door & Double Drawer	BI-3616-1D2DR	36 1/2(93)	22 3/4 (58)	16 3/4 (43)
36" x 24" Door & Waste Bin Combo	BI-3624-1D1W	36 ½ (93)	22 ¾ (58)	24 ¾ (63)
36" x 24" Door & Double Drawer Combo	BI-3624-1D2DR	36 ½ (93)	22 ¾ (58)	24 ¾ (63)
36" x 24" Door & Triple Drawer Combo	BI-3624-1D3DR	36 ½ (93)	22 ¾ (58)	24 ¾ (63)
36" x 24 Double Door	BI-3624-2D	36 ½ (93)	3 (8)	24 ¾ (63)
42" x 8" Single Drawer	BI-4208-1DR	42 ½ (108)	22 ¾ (58)	8 ¾ (22)
42" x 16" Double Door	BI-4216-2D	42 1/2 (108)	3 (8)	16 3/4 (43)
42" X 16" Single Door & Double Drawer	BI-4216-1D2DR	42 1/2 (108)	22 3/4 (58)	16 3/4 (43)
42" x 24" Door & Waste Bin Combo	BI-4224-1D1W	42 ½ (108)	22 ¾ (58)	24 ¾ (63)
42" x 24" Door & Double Drawer Combo	BI-4224-1D2DR	42 ½ (108)	22 ¾ (58)	24 ¾ (63)
42" x 24" Door & Triple Drawer Combo	BI-4224-1D3DR	42 ½ (108)	22 ¾ (58)	24 ¾ (63)
33" x 23" Zero Clearance Liner	BI-3323-ZCL	32 7/8 (83.5)	22 9/16 (57)	9 1/16 (23)
46" Zero Clearance Liner	BI-4823-ZCL	46 (117)	21 3/8 (54)	10 3/8 (26)
40" Zero Clearance Liner	BI-4223-ZCL	40 (101)	21 3/8 (54)	10 3/8 (26)
34" Zero Clearance Liner	BI-3623-ZCL	34 (86)	21 3/8 (54)	10 3/8 (26)
22" Zero Clearance Liner	BI-2423-ZCL	22 (56)	21 3/8 (54)	10 3/8 (26)
Slide Out Propane Tank Kit	BI-TSK	15 (38)	20 (51)	24 (61)
OASIS® MODULAR COMPONENTS	Part Number	Width in. (cm)	Depth in. (cm)	Height in. (cm)
Under Grill Cabinet - 825 series	IM-UGC825-CN	55 (139)	24 (61)	35 ½ (90)
Under Grill Cabinet - 665 series	IM-UGC665-CN	40 ½ (103)	24 (61)	35 ½ (90)
Under Grill Cabinet - 500 series	IM-UGC500-CN	34 ¾ (88)	24 (61)	35 ½ (90)
Under Grill Cabinet - 700 Series BIG 44RB	IM-UGC44-CN	46 ¾ (114)	24 (61)	35 ½ (90)
Under Grill Cabinet - 700 Series BIG38RB	IM-UGC38-CN	40 ¾ (104)	24 (61)	35 ½ (90)
Under Grill Cabinet - 500 Series BIG32RB / BIG32	IM-UCG32-CN	34.75 (88)	24 (61)	35 ½ (90)
Under Grill Cabinet BIB18RT / BIB18IR / BIB18PB	IM-UGC18-CN	24 (61)	24 (61)	35 1/2 (90)

S = Standard O = Optional ° Rear burner * All lid openings require a minimum of 5" clearance behind the unit. Refer to owners manual for individual models. - Dimensions subject to change. Refer to manual for accurate dimensions.

Important: Always refer to manual for individual models. Dimensions shown here are rounded for approximation - Dimensions subject to change. Refer to manual for accurate dimensions. Refer to manual for end panels and transition kits not shown here.

OASIS™ MODULAR COMPONENTS				Part Number	Width in. (cm)	Depth in. (cm)	Height in. (cm)		
Propane Tank Cabinet - universal door				IM-UTC-CN	24 (61)	24 (61)	35 ½ (90)		
Universal Door Cabinet				IM-UDC-CN	24 (61)	24 (61)	35 ½ (90)		
Outdoor Rated Fridge				NFR055OUSS	24 (61)	26 (66)	34 (86)		
Three Drawer Cabinet				IM-3DC-CN	24 (61)	24 (61)	35 ½ (90)		
Two Drawer Cabinet				IM-2DC-CN	24 (61)	24 (61)	35 ½ (90)		
Waste Drawer with Paper Towel Holder				IM-WDC-CN	24 (61)	24 (61)	35 ½ (90)		
Wall Spacer				IM-WSF-CN	1 ½ (4)	4 (10)	35 (89)		
GRILL SPECIFICATIONS		BIPR0825RBI	BIPR0665RB	BIPR0500RB	BIP500RB	BIG44RB	BIG38RB	BIG32RB	BI32
LIFT EASE™ ROLL TOP STAINLESS STEEL LID		S	S	S	S	S	S	S	S
Double walled stainless steel lid		S	S	S	S	S	S	S	S
ACCU-PROBE™ temperature gauge		S	S	S	S	S	S	S	S
Total cooking surface (sq. in.)*		1245	1000	760	760	1100	945	785	785
Electronic ignition		S°	S°	S°	S°	S°	S°	S°	-
JETFIRE™ ignition		S	S	S	S	S	S	S	S
Infrared ceramic bottom burners		S	0	0	0	0	0	0	0
Stainless steel bottom burners		S	S	S	S	S	S	S	S
Infrared rear rotisserie burner		S	S	S	S	S	S	S	N/A
Integrated wood chip smoker tray		S	S	N/A	N/A	N/A	N/A	N/A	N/A
7.5mm Stainless steel Iconic WAVE™ cooking grids		N/A	N/A	N/A	N/A	N/A	N/A	N/A	S
9.5mm Stainless steel 9.5 mm Iconic WAVE™ cooking grids		S	S	S	S	S	S	S	N/A
Shot-blasted finish on cooking grids		N/A	N/A	N/A	N/A	S	S	S	S
LED SPECTRUM / NIGHT LIGHT™ control knobs		S	S	S	S	S	S	S	N/A
SafetyGlow		S	S	S	S	S	S	S	N/A
Interior lights		S	S	S	N/A	N/A	N/A	N/A	N/A
Removable drip pan		S	S	S	S	S	S	S	S
Warming rack		S	S	S	S	S	S	S	S
Dual Position Warming Rack		N/A	N/A	N/A	N/A	S	S	S	S
President's Limited Lifetime Bumper to Bumper Warranty		S	S	S	S	S	S	S	S
Built-in Trim with 2" Cut-out Tolerance		N/A	N/A	N/A	N/A	S	S	S	S
Interconnected Lighting Knobs (controls lights from each grill and burner)		N/A	N/A	N/A	N/A	S	S	S	S
Convertible Valves		N/A	N/A	N/A	N/A	S	S	S	S
DIMENSIONS (opening size for installation)									
Total width in inches (cm)		52 3/8 (133)	38 (97)	30 ¾ (78)	30 ¾ (78)	42-44 (107 - 111)	36-38 (92-96)	30-32 (77 - 81)	30-32 (77 - 81)
Total depth in inches (cm)		20 5/8 (52)	20 5/8 (52)	20 5/8 (52)	20 5/8 (52)	19 3/8 - 19 3/4 (49.2 - 50.2)	19 3/8 - 19 3/4 (49.2 - 50.2)	19 3/8 - 19 3/4 (49.2 - 50.2)	19 3/8 - 19 3/4 (49.2 - 50.2)
Total height in inches (cm)		8 7/8 (23)	8 7/8 (23)	8 7/8 (23)	8 7/8 (23)	10 1/4 (26)	10 1/4 (26)	10 1/4 (26)	10 1/4 (26)

NAPOLEON

CELEBRATING OVER 40 YEARS OF HOME COMFORT PRODUCTS



napoleon.com

24 Napoleon Road, Barrie, Ontario, Canada L4M 0G8
103 Miller Drive, Crittenden, Kentucky, USA 41030
7200 Trans Canada Highway, Montreal, Quebec, Canada H4T 1A3

PHONE: 1-888-721-8324

Approved by Intertek Testing Services to standards in the USA and Canada: ANSI Z21.58 / CSA 1.6 - Outdoor Cooking Gas Appliances. All specifications and designs are subject to change without prior notice due to ongoing product improvements. Consult your owner's manual for complete installation and operating instructions and check all local and national Building Codes and Regulations. Not all features available on all models. Napoleon is a registered trademark of Wolf Steel Group Inc. Images and colors may not be exactly as shown.

Authorized Dealer



Printed in Canada
ADBRN2-BIGG (ADBRBI)
11/2021