

QUICK START GUIDE

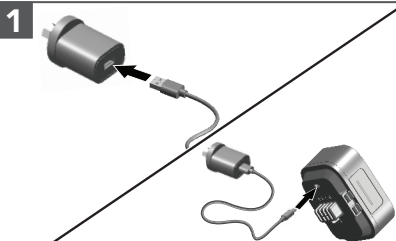
CORDLESS CITRUS JUICER



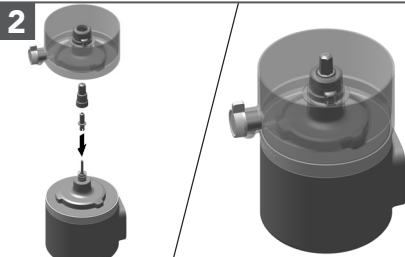
Please refer to your “Owner’s Manual” and/or Online
“Product Guide” for detailed instructions.

KitchenAid

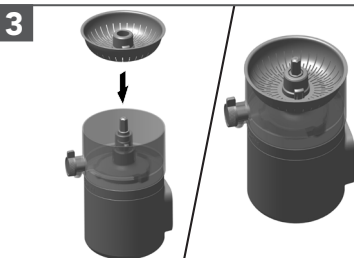
©2024 All rights reserved.



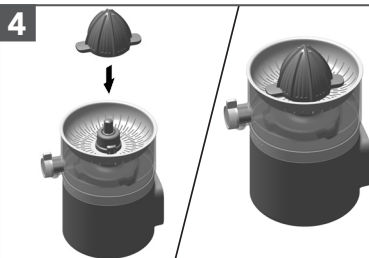
Charge the Battery until it's full, using the USB Cable, and a USB Adapter, or using the Docking Station (sold separately) and clean all parts of the Citrus Juicer.



Insert the Shaft Cover over the shaft until it clicks. Then place the Reservoir into slots on the Juicer Base.

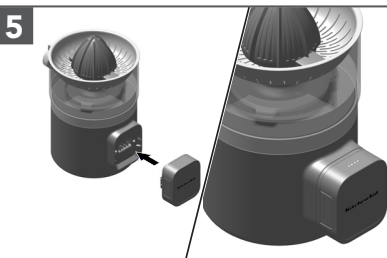


Place and align the Sieve hub in the Reservoir until it's seated properly.

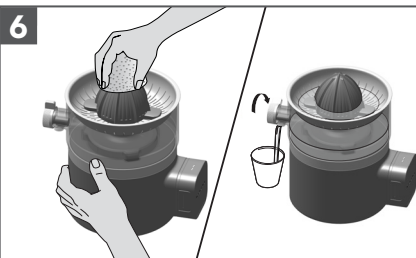


Place the Reamer on the top of the Sieve.

NOTE: Before operating, keep the lever knob closed to collect the juice in the Reservoir, or open the knob to collect the juice in a separate container.



Insert the Battery into the Battery slot located at the back of the appliance, make sure it is aligned. The LED will light and display the Battery status for five seconds, then turn off.



To operate, press the citrus fruit half down on the Reamer. Firmly hold it against the spinning Reamer and move the fruit in all directions to extract the juice. Lift fruit and press down again to reverse the Reamer direction. If knob is closed, rotate counterclockwise to transfer juice to a collection container.