



ALBV15PNR



32" x 14.75" x 23.63" (H x W x D)

15" wide built-in undercounter ADA compliant beverage cooler for home or commercial use, with a panel-ready door frame, glass door, and digital controls

Highlights:

Less than 32" high for an easy fit under lower ADA compliant counters

Panel-ready door trim lets you blend the unit into your own cabinetry

Just under 15" wide for an easy fit, with a flush back design to save space

Product Features:

15" Wide Undercounter Beverage Center	Built-in or freestanding glass door refrigerator sized to fit in ADA compliant spaces
ADA compliant	Sized at 32" high for use under lower ADA compliant counters
Panel-ready door trim	European style articulating door hinge and bracket kit allow easy installation of custom door trim panels to match adjacent cabinetry; recommended panel dimensions: 3/4" thickness at 28 1/4" H x 14 5/8" W with a 3 1/4" H x 3 1/4" W inner frame
Built-in capable	Make the best use of space by installing your appliance under the counter
Commercially approved	ETL-S listed to NSF-7 Standards for use in commercial establishments
Glass door with stainless steel trim	Provides a full display of stored contents with a heat-safe double tempered design
Factory installed lock	Keyed lock for a secure interior, with two keys included
Digital thermostat	Electronic controls for precise temperature management.
Digital display	Temperature readout can be shown in Celsius or Fahrenheit



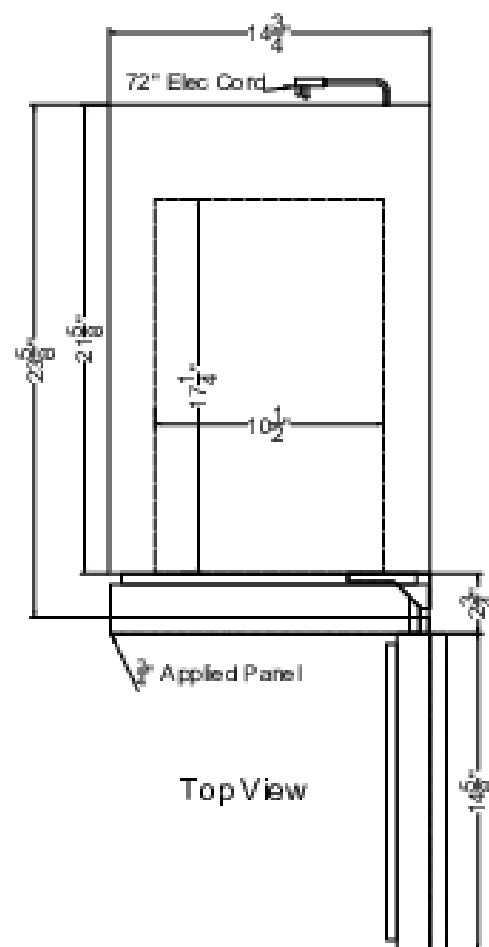
ALBV15PNR Specifications:

Overview	
Nominal Height	32.0" (81 cm)
Height of Cabinet	32.0" (81 cm)
Nominal Width	15.0" (38 cm)
Width	14.75" (37 cm)
Nominal Depth	24.0" (61 cm)
Depth	23.63" (60 cm)
Depth with door at 90°	39.0" (99 cm)
Capacity	2.3 cu.ft. (65 L)
Defrost Type	Automatic
Door	Glass/Panel-Ready Frame
Cabinet	Black
US Electrical Safety	ETL
Canadian Electrical Safety	ETL-C
Sanitation	ETL-S
Energy Usage/Year	270.0kWh/year
Amps	1.0
Voltage/Frequency	115 V AC/60 Hz
Weight	68.0 lbs. (31 kg)
Parts & Labor Warranty	1 Year
Compressor Warranty	5 Years
UPC	761101082899
Refrigerator Features	
Door Swing	RHD
Reversible	Yes
Shelf Type	Glass
Shelf Qty	3
Adjustable Shelves	Yes
Thermostat Type	Digital
Fan Type	Interior and Exterior
Refrigerant Type	R600a
Refrigerant Amount	0.78oz.
High Side PSI	270.0
Low Side PSI	105.0
Level Legs Qty	4
Interior Light	Yes

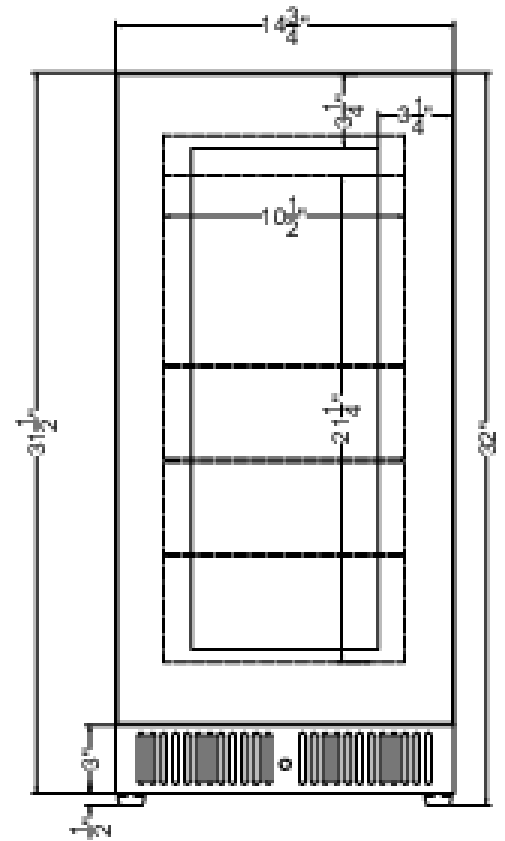
Temperature Range 36 - 43°F

Sound Level 33 dB

Dimensions	
Interior Height	21.25" (54 cm)
Interior Width	10.5" (27 cm)
Interior Depth	17.25" (44 cm)
Compressor Step Height	3.5" (9 cm)
Compressor Step Width	10.5" (27 cm)
Compressor Step Depth	5.0" (13 cm)



Top View



Front View