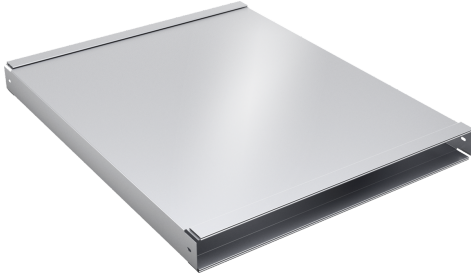


800 Series, Flat duct HDD2RECTD



2' Rectangular Duct Can Be Used As A Slim Extension To Exhaust Through A Cabinet or Wall While Maximizing Cabinet Storage Space

- Slim Rectangular Duct That Is 2 ft Long X 1-7/8 in Deep x 19 in Wide
- Can Be Attached to HDDSTRAN8 Or HDDSTRAN6 Transitions
- Durable Galvanized Steel Construction



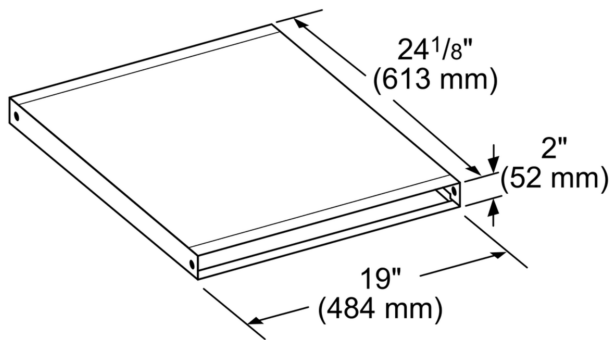
800 Series, Flat duct HDD2RECTD

**2' Rectangular Duct Can Be Used As A
Slim Extension To Exhaust Through A
Cabinet or Wall While Maximizing Cabinet
Storage Space**

Design

- Slim Rectangular Duct That Is 2 ft Long X 1-7/8 in Deep x 19 in Wide
- Can Be Attached to HDDSTRAN8 Or HDDSTRAN6 Transitions
- Durable Galvanized Steel Construction

800 Series, Flat duct HDD2RECTD



measurements in inches (mm)