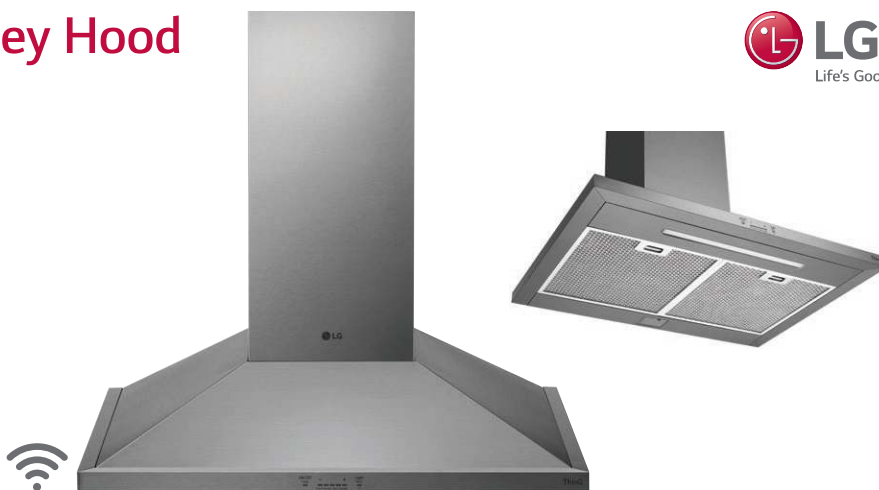


36" Wall Mount Chimney Hood

- Powerful 600 CFM Blower
- 5" Low-Profile Body
- Accommodates Ceilings up to 9' 6"
- 5-Speed IR Touch Controls
- Dual Level LED Lighting
- 2 Decorative Mesh Filters
- RoHS Compliant
- LG ThinQ® Technology (Wi-Fi)



COLOR AVAILABILITY

- HCED3615S – Stainless Steel
- HCED3615D – Black Stainless Steel

FEATURES

| | |
|---------------------|------------------------------------|
| Controls | IR Touch |
| Auto Delay-Off | Yes |
| Lighting | 9W LED Light Strip |
| Dual-Level Lighting | Yes |
| Filters | 2 Decorative Mesh, Dishwasher-Safe |
| Wi-Fi Capabilities | No |
| RoHS Compliant | Yes |

BLOWER & DUCTING

| | |
|--------------------------|---|
| Speed Levels | 5 |
| CFM (min-max) | 200-600 |
| Sones (min-max) | 1-6 |
| Vertical Internal Blower | 6" Round |
| Venting Options | Roof, Wall, Room/Recirculating (Kit Required) |

SMART FEATURES

| | |
|------------------------------|---|
| Wi-Fi Enabled | Yes |
| ThinQ® | Yes |
| Proactive Customer Care | No |
| Voice Control (Alexa/Google) | No |
| SmartDiagnosis™ | No |
| Remote Monitoring | Yes (On/Off, Control CFM, Lights, Status) |

APPEARANCE / MATERIALS / FINISHES

| | |
|---|-----|
| Fingerprint & Smudge Resistant Exterior | No |
| Low Profile Body | Yes |

TECHNICAL SPECS

| | |
|------------------------|-----------------------|
| Required Power Supply | 120V, 60Hz |
| Connected Load | 4 Amp |
| Minimum Circuit Rating | 15 Amp |
| Power / Plug Type | 3-Wire Cable Required |

INCLUDED ACCESSORIES

Telescoping Duct Cover

OPTIONAL ACCESSORIES

| | |
|---|---|
| Recirculation Kit for Room Venting | ZRC-01AN (Order from store.zephyronline.com) |
| Duct Cover Extension for Ceiling Heights that are between 9 ft. 10 in. and 12 ft. | Z1C-00AN (Order from store.zephyronline.com) |

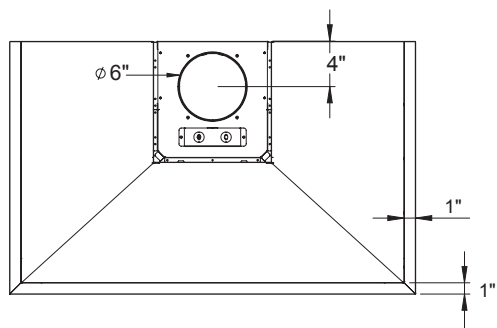
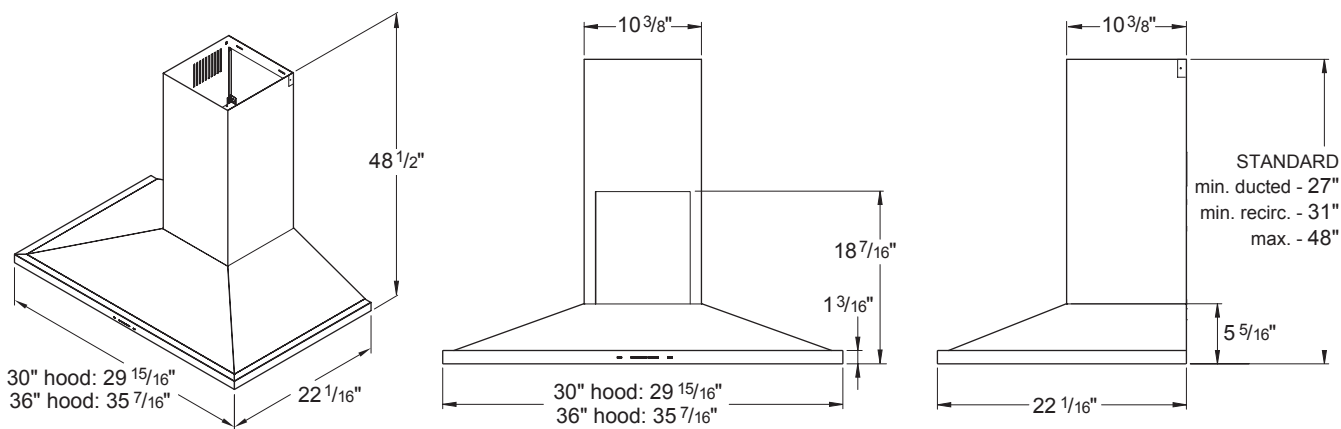
DIMENSIONS / CLEARANCES / WEIGHT

| | |
|---------------------------------------|--------------------------------------|
| Product Dimensions (W x H x D) | 35 7/16" x 27" to 48 1/2" x 22 1/16" |
| Minimum Distance from Cooking Surface | 26" – 34" |
| Carton Dimensions (W x H x D) | 39 1/2" x 27 3/8" x 26 5/8" |
| Approx. Weight (Product / Carton) | 37 lbs. / 55 lbs. |

LIMITED WARRANTY

| | |
|-----------------|--------|
| Parts and Labor | 1 Year |
|-----------------|--------|

DIMENSIONS / CLEARANCES

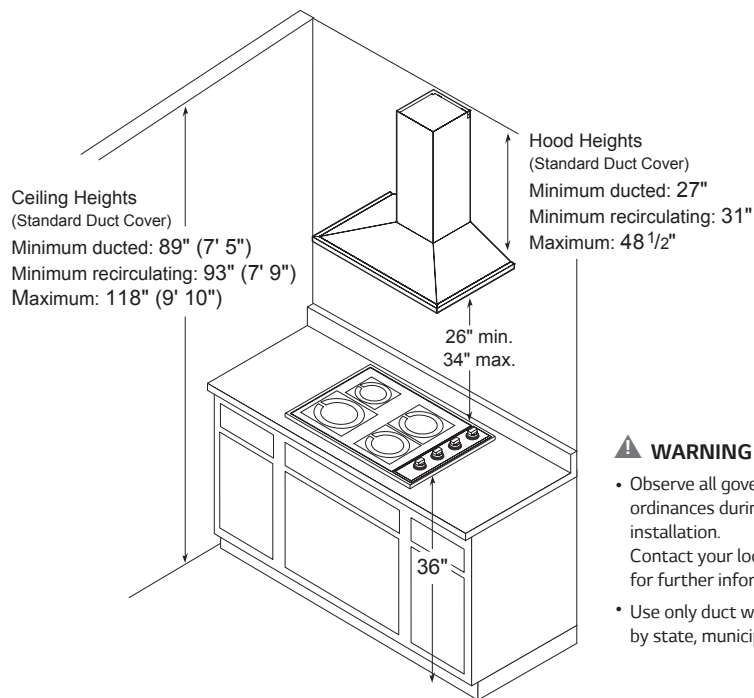


Tolerances: +1/16", -0 (1.6 mm, -0), unless otherwise stated.

INSTALLATION NOTES

- The exhaust duct(s) and electrical wiring can be connected from either the top or the back of the hood.

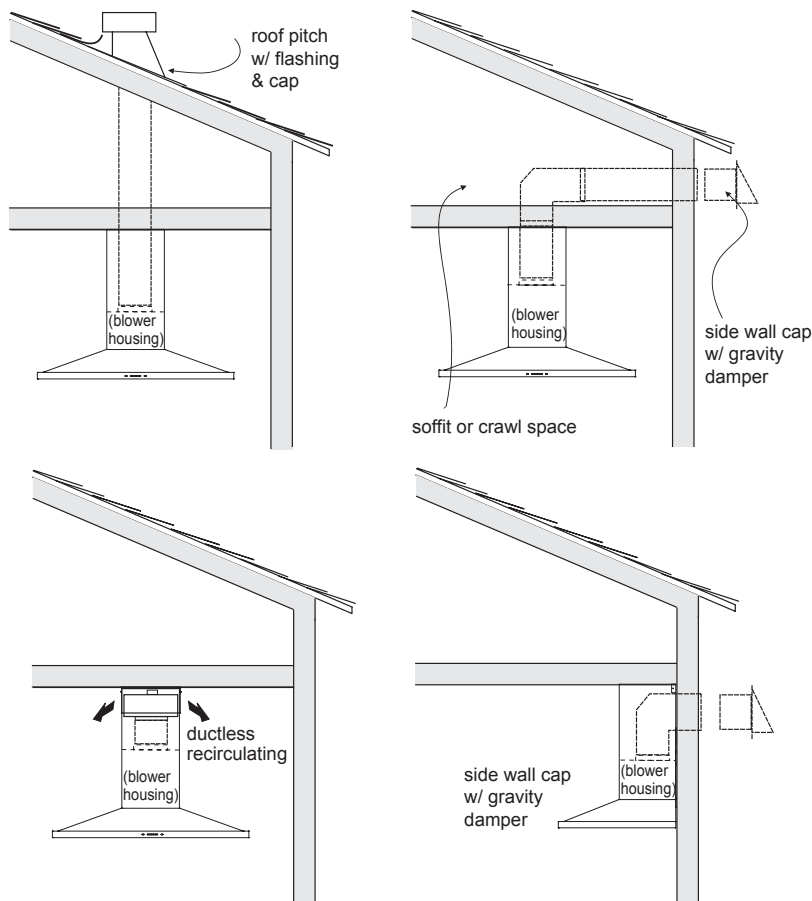
INSTALLATION CLEARANCES



WARNING

- Observe all governing codes and ordinances during planning and installation.
Contact your local building department for further information.
- Use only duct work deemed acceptable by state, municipal and local codes.

DUCTING OPTIONS



INSTALLATION NOTES

- A minimum of 6" round duct must be used to maintain maximum air flow efficiency.
- Always use rigid metal ducts only. Flexible ducts could restrict air flow by up to 50%.
- ALWAYS, when possible, reduce the number of transitions and turns. If long duct run is required, increase duct size from 6" to 7" or 8".
- If turns or transitions are required, install as far away from hood duct output and as far apart as possible.
- Minimum mount height between range top to hood bottom should be no less than 26".
- Maximum mount height should be no higher than 34".
- It is important to install the hood at the proper mounting height. Mounting the hood too low could result in heat damage and fire hazard. Mounting the hood too high will make it hard to reach and reduce its performance and efficiency.
- If available, also refer to the range manufacturer's height clearance requirements and recommended hood mounting height above range.

⚠ WARNING Fire Hazard

- NEVER exhaust air or terminate duct work into spaces between walls, crawl spaces, ceiling, attics or garages.
- All exhaust must be ducted to the outside.
- Use metal ductwork only.
- Fasten all connections with sheet metal screws and tape all joints with certified Silver Tape or Duct Tape.