

# Quick Start Manual



 **Speed Queen.**

# Welcome

Welcome to the Speed Queen® family. Thank you for your support of our truly commercial quality products. Our washers and dryers are expertly engineered to deliver commercial performance, tested to ensure ultimate durability and built with American Pride. For more than 110 years, Speed Queen consumer laundry products have been manufactured in Ripon, Wisconsin, a place where pride of workmanship is not just alive, but thriving and embodied by each individual who designs, tests, assembles or in some way touches a Speed Queen product. A special thing happens when that pride is combined with the highest quality commercial materials and components...it leads to the ultimate reliability...reliability measured in decades, not years. That's legendary Speed Queen Quality.

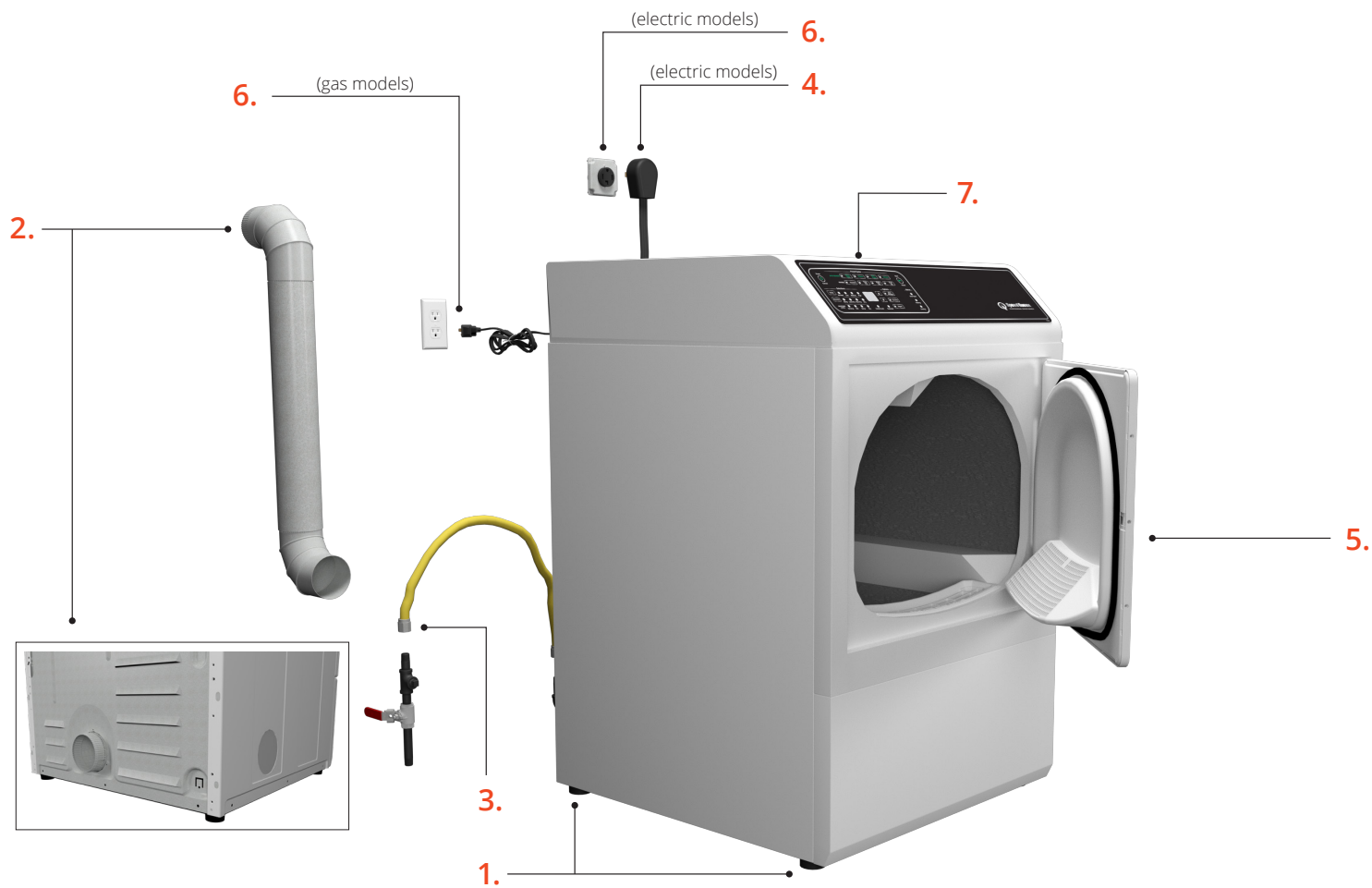
## Installation

### Parts included:



Three (3) Screws  
(Electric Models)

1. Position and level the dryer.
  - Recommended rear clearance minimum is 2 in (51 mm) for utility connections and 6 in (152 mm) when venting through rear of unit
2. Connect exhaust system.
  - Dryer must be exhausted to the outdoors
  - Use 4 in (102 mm) rigid duct
  - Maximum straight duct length = 65 ft (19.8 m). Each elbow deduct 10 ft (3 m)
  - Sufficient make-up air must be supplied. The free area of any opening for outside air must be at least 40 in<sup>2</sup> (25806 mm<sup>2</sup>) per unit
3. Gas models – connect gas supply pipe. Gas service to a gas dryer must conform with the local codes and ordinances.  
*Refer to installation instructions, which can be found at [speedqueendoc.net](http://speedqueendoc.net)*
  - Tighten all connections securely but do not overtighten to avoid breaking or bending the gas valve bracket.Turn on gas and check all pipe connections (internal and external) for gas leaks by applying a non-corrosive leak detection fluid to the fittings. If bubbles are present then a leak is likely.  
Retighten connections and recheck for leaks.
4. Electric models – connect electrical cord with three-wire or four-wire plug.  
*Refer to installation instructions, which can be found at [speedqueendoc.net](http://speedqueendoc.net)*
5. Wipe out inside of dryer.
6. Plug in the dryer.
7. Start dryer and check that dryer is heating.



# Cycle Information

## Electronic Control Dryers

The following cycle descriptions will help determine which cycle to choose depending on the type of laundry being dried. The cycle settings may be modified using the Selections and Options.

### Auto-Sensing

The Auto-Sensing drying cycle operation is determined by the type of cycle selected as well as the moisture sensing system, which can be set by changing the Dryness setting. Auto-Sensing cycles are Energy Saver cycles that help prevent over-drying. When a wet load is put into the dryer it takes a certain amount of time to reach the desired dryness level. The time will vary with load size, type of fabric, amount of moisture in the load, air flow and the laundry room environment. The estimated time will be shown in the digital display.

#### Heavy Duty

Dry heavy items such as blankets on this cycle.

#### Regular

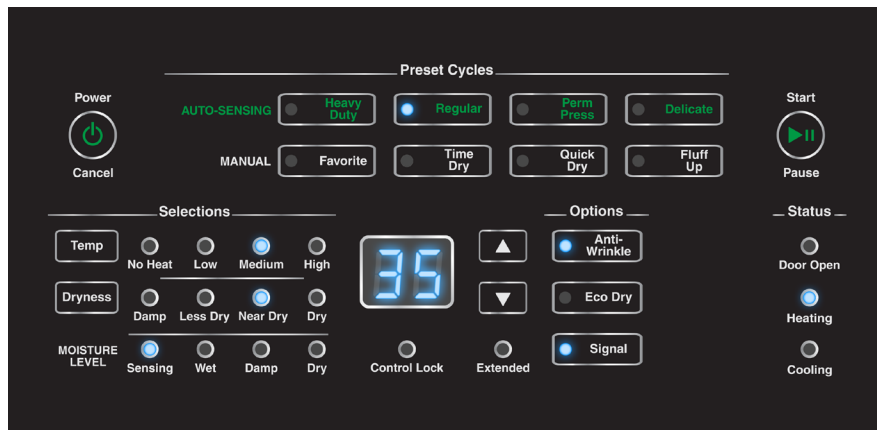
Use for sturdy items like play or work clothes.

#### Perm Press

Use for permanent press items and synthetics.

#### Delicate

Dry delicate items on this cycle.



*Note: The time shown before starting the cycle is estimated by averaging the last 5 cycles run on the selected cycle/dryness combination.*

## The Favorite Cycle

The Favorite keypad allows the user to save nine different cycles, selections and options for later use.

1. Press the Favorite keypad. The control will display the settings for the first Favorite cycle. The display will switch between F1 and the cycle time for the selected cycle.
2. Press the keypads for the desired settings.
3. Press the Favorite keypad to save the settings.
4. The next Favorite cycle, F2, will be displayed. Access saved Favorite cycles by pressing Favorite keypad and then the up and down arrow keypads.

## Manual

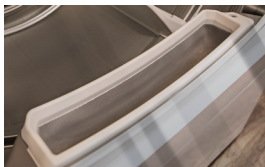
There are three manual cycles: Time Dry, Quick Dry and Fluff Up. These cycles will run for the set number of minutes shown on the digital display. The cycle time can be increased or decreased using the up and down arrow keypads. The time and temperature selection may be adjusted manually at any time before or during the cycle.

# Operating

1. Prepare laundry



2. Clean lint filter by wiping lint out of screen area  
(If using lint guard, remove first)



3. Load dryer half full with laundry



4. Close door



5. Turn on dryer by pressing power/cancel

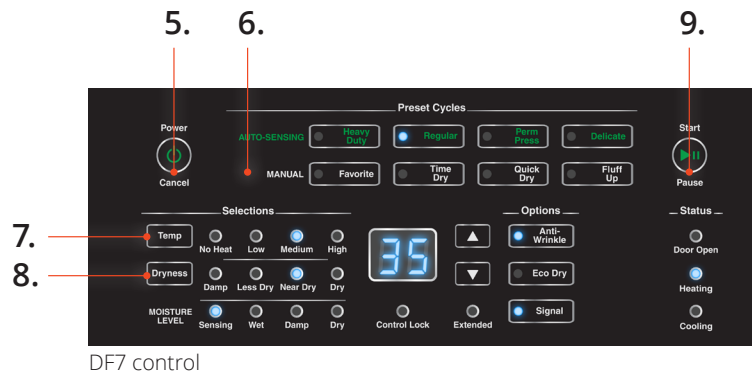
7. Set temperature

9. Press start

6. Set cycle

8. Set dryness level

10. Remove laundry from dryer once cycle has ended



# Register

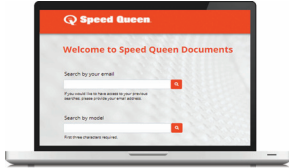
1. Register your product at [www.speedqueen.com](http://www.speedqueen.com) to take full advantage of the limited warranty.



3, 5 & 7 Year Warranties, depending on your model.  
Covers all parts and in-home labor.

**Note:** This unit includes a limited warranty. Refer to [Speedqueendoc.net](http://Speedqueendoc.net) to download the full warranty bond.

2. Download full documentation and view installation and operating videos for an immersive experience at [Speedqueendoc.net](http://Speedqueendoc.net) or scan the QR code below.



3. If you wish to receive printed documents at no cost, please complete the order form online at [speedqueen.com/request-printed-documents/](http://speedqueen.com/request-printed-documents/) or email your request to [technicalcommunications@alliancels.com](mailto:technicalcommunications@alliancels.com).

If you don't have internet access, complete the attached order form and return by mail to the address on the form.

## Order Form for Printed Documentation

As an alternative to mailing this card, and for faster delivery of your manuals, place your order online at [speedqueen.com/request-printed-documents/](http://speedqueen.com/request-printed-documents/).

- ☐ Please send me a printed Installation Manual, User's Guide, and Warranty Bond.
- ☐ I understand this card does not register my product. I must go to [www.speedqueen.com](http://www.speedqueen.com) to register.

Model No. \_\_\_\_\_

Serial No. \_\_\_\_\_

Name \_\_\_\_\_

Address \_\_\_\_\_ City \_\_\_\_\_ State \_\_\_\_\_

Zip Code \_\_\_\_\_ Phone No. \_\_\_\_\_

Email Address \_\_\_\_\_

Processing of manuals begins upon receipt of order. Allow 1-2 weeks for delivery.



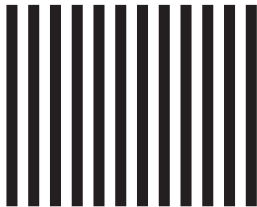


Part No. D517569R2  
December 2020

© Published by permission of the copyright owner – DO NOT COPY or TRANSMIT  
Speed Queen by Alliance Laundry Systems



NO POSTAGE  
NECESSARY IF  
MAILED IN THE  
UNITED STATES



**BUSINESS REPLY MAIL**

FIRST CLASS MAIL PERMIT NO. 489 RIPON, WI

POSTAGE WILL BE PAID BY ADDRESSEE

**SPEED QUEEN**  
TECHNICAL DOCUMENTATION  
SHEPARD STREET  
P O BOX 990  
RIPON WI 54971-9967

