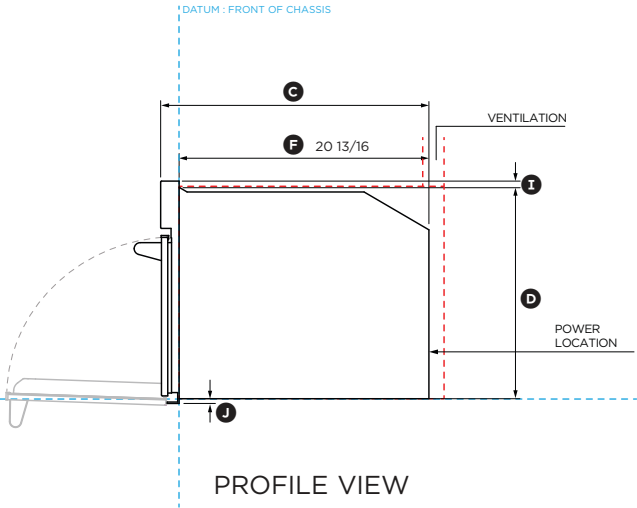
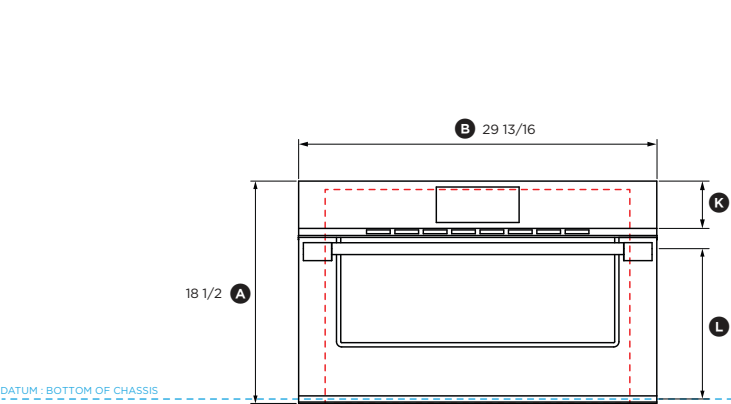
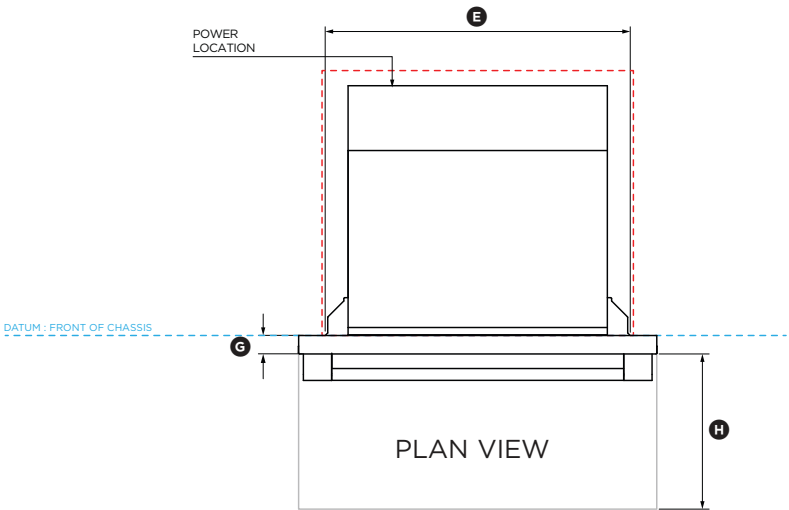


FISHER & PAYKEL

DATA SHEET

Steam Oven



Model no:
OS30NPX1
(refer page 2 for metric measurements)

Product Dimensions	inch
Ⓐ Overall height of product	18 1/2
Ⓔ Overall width of product	29 13/16
Ⓒ Overall depth of product (excluding handle)	22 5/16
Ⓓ Height of chassis	17 9/16
Ⓘ Width of chassis	25 7/16
Ⓣ Depth of chassis	20 13/16
Ⓖ Depth of oven front frame and control panel (excludes handle)	1 9/16
Ⓢ Depth of oven door when fully open (measured from front of control panel)	12 1/8
Ⓛ Height from top of control panel to top of chassis	9/16
Ⓤ Height from bottom of chassis to bottom of lower trim	7/16
Ⓚ Height of control panel	3 15/16
Ⓜ Height from bottom of chassis to centreline of handle	12 7/8

Minimum Clearances	inch
Minimum inside height of cavity from base of chassis*	17 3/4
Minimum cavity width	25 3/8
Minimum inside cavity depth from front of chassis**	22 1/16
Rear ventilation depth***	2
Rear ventilation width***	22 1/16

*A spacer may be required in the base of the cavity. For more information on clearances, refer to installation guide.

**Flush Installation possible. Depending on cabinet panel thickness a rebate around front frame might be required, refer to installation guide.

***Rear ventilation totalling 43.4in² is required. The air vent must be located at the rear of cabinet, it can be positioned at the base, sides, back or top of the cavity.

INDICATES CABINETRY / PRODUCT DATUM -----
INDICATES CABINETRY CLEARANCES -----

DATE: 10.10.2023

IMPORTANT NOTE: Throughout this guide, dimensions may vary by $\pm 2\text{mm}$ (1/16"). Please read the installation guide for detailed information on installing the product. For full installation instructions & specifications visit fisherpaykel.com



FISHER & PAYKEL

DATA SHEET Steam Oven

Model no:

OS30NPX1

(refer page 1 for imperial measurements)

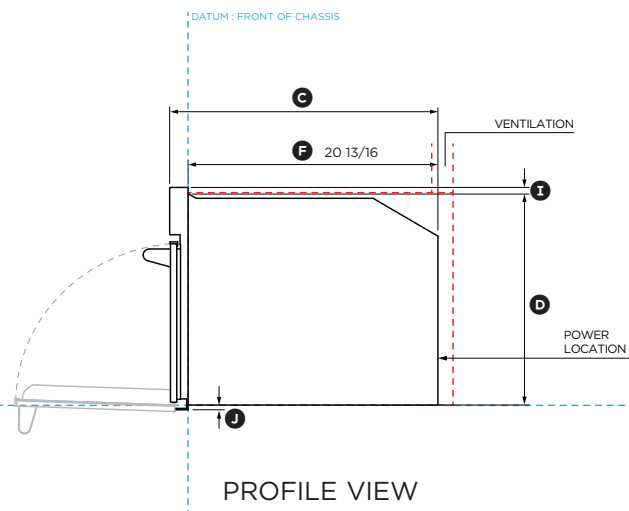
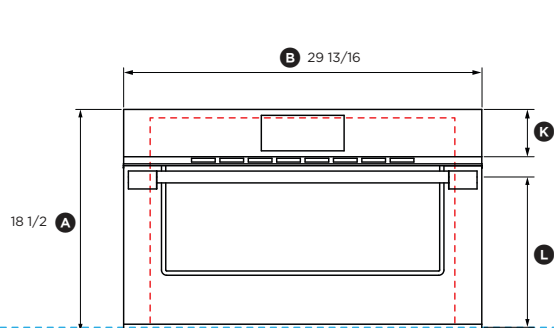
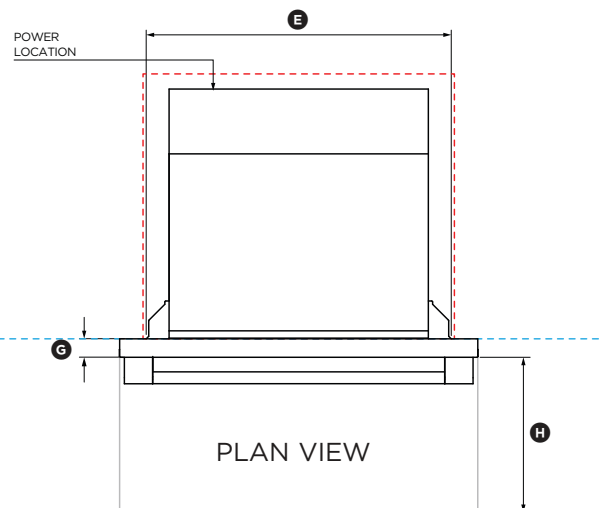
Product Dimensions	mm
① Overall height of product	470
② Overall width of product	757
③ Overall depth of product (excluding handle)	567
④ Height of chassis	446
⑤ Width of chassis	645
⑥ Depth of chassis	528
⑦ Depth of oven front frame and control panel (excludes handle)	39
⑧ Depth of oven door when fully open (measured from front of control panel)	308
⑨ Height from top of control panel to top of chassis	14
⑩ Height from bottom of chassis to bottom of lower trim	10
⑪ Height of control panel	100
⑫ Height from bottom of chassis to centreline of handle	327

Minimum Clearances	mm
Minimum inside height of cavity from base of chassis*	450
Minimum cavity width	645
Minimum inside cavity depth from front of chassis**	560
Rear ventilation depth***	50
Rear ventilation width***	560

*A spacer may be required in the base of the cavity. For more information on clearances, refer to installation guide.

**Flush Installation possible. Depending on cabinet panel thickness a rebate around front frame may be required, refer to installation guide.

***Rear ventilation totalling 280cm² is required. The air vent must be located at the rear of cabinet, it can be positioned at the base, sides, back or top of the cavity.



FRONT VIEW

PROFILE VIEW



INDICATES CABINETRY / PRODUCT DATUM -----
INDICATES CABINETRY CLEARANCES -----

DATE: 10.10.2023

IMPORTANT NOTE: Throughout this guide, dimensions may vary by ± 2 mm (1/16"). Please read the installation guide for detailed information on installing the product. For full installation instructions & specifications visit fisherpaykel.com