

# GE PROFILE™ APPLIANCES

---

*Dramatic style and innovation.*



*Profile™*

*We bring good things to life.*

*GE Profile™ appliances, featuring  
the GE Profile Stainless Portfolio.*

It's no secret why, year after year, GE is named  
as America's #1 preferred appliance brand\*.

That's because we continue to craft high-performance  
appliances that assure your home provides what your  
lifestyle demands. Distinguished by dramatic style  
and innovation, GE Profile appliances  
deliver both aesthetic and practical rewards.

Among the highlights is the GE Profile  
Stainless Portfolio, a collection that elevates  
kitchen appliances to functional works  
of art. Whether it's our CustomStyle™  
refrigerator or contoured dishwasher, each  
piece integrates beautifully into

any decor. The possibilities are endless!

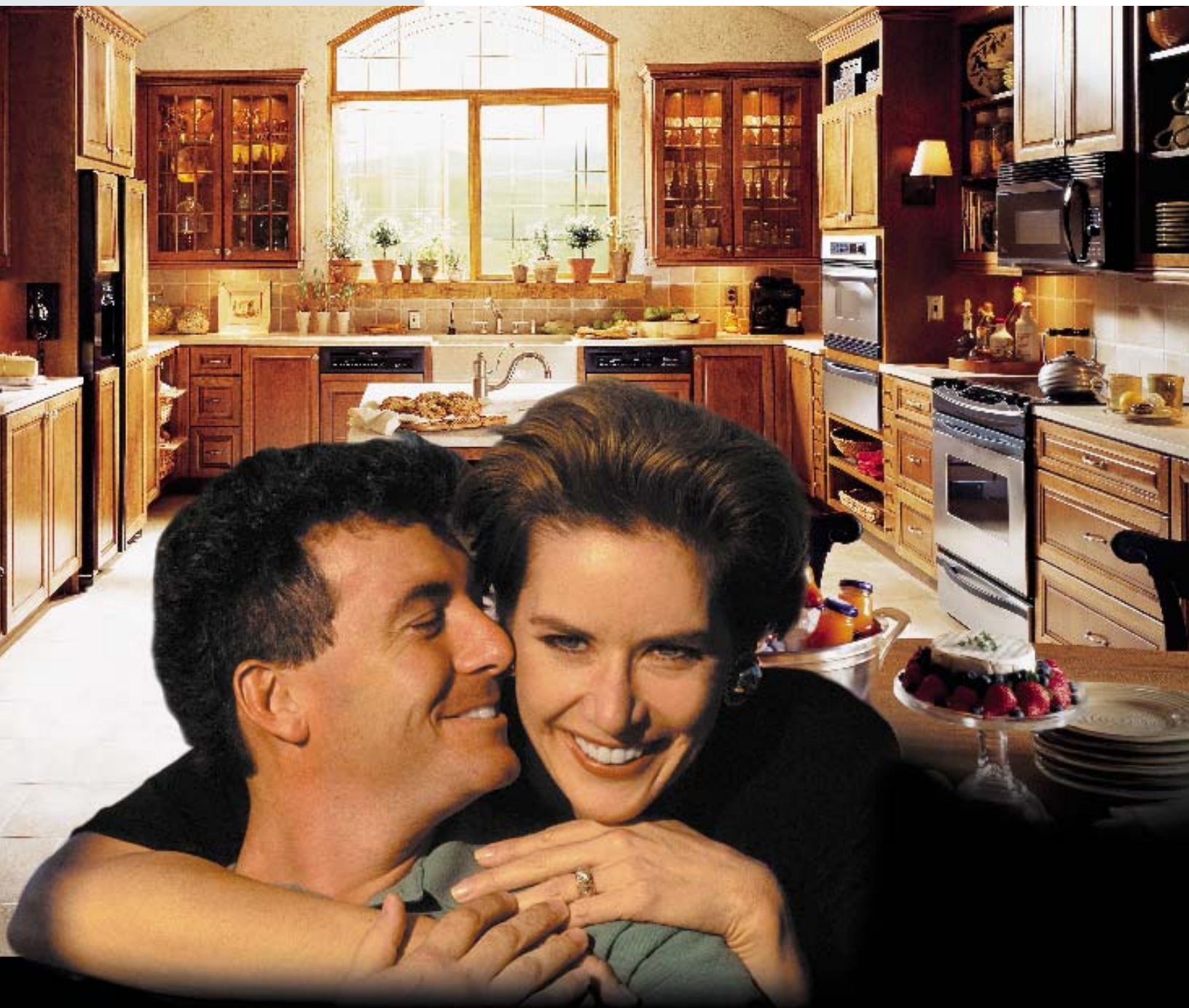


\*GE is the appliance brand most often mentioned among  
the brands rated as offering the best products and services  
in America. Source: Louis Harris Poll, 2000.









*Dramatic style and innovation to transform your lifestyle.*

The kitchen is becoming the new family room, the most entertaining room in the house, and now it needs to do more than ever. Through a multitude of innovative features and impressive styling enhancements, GE Profile™ appliances will help transform your lifestyle into a world of convenience with a touch of warmth and inviting appeal.

You'll find a Profile appliance to complement every design trend, from CustomStyle™ for the elegant built-in look to seamless high-tech cooktops for expanded cooking flexibility. GE appliances help make every kitchen more beautiful and versatile.

# Table of Contents

Product	Feature Page	Specifications
Side-By-Side Refrigerators	8-13	92
CustomStyle™ Side-By-Side Refrigerators	14-17	93
Top-Freezer Refrigerators	18-19	94
CustomStyle™ Top-Freezer Refrigerators	20-22	95
Bottom-Freezer Refrigerators	23	96
Advantium™ Ovens	24-29	96-97
Advantium™ 120 Oven	30-31	97
Built-In Cooking Products	32-51	98-102
Free-Standing Cooking Products	52-70	103-106
Hoods and Venting Options	71-73	107-108
Microwave Ovens	74-81	109-112
Dishwashers	82-85	113
Clothes Care	86-91	114-115



## *GE puts everything at your fingertips!*

Welcome to the GE Profile Product Guide. The following pages will help you choose from among the many great appliance choices available from GE.

This product guide has been designed to provide quick and easy reference to GE's top of the line products.

It includes product information and specifications on select models. For the complete line of appliances or specific model information not covered in this guide, visit our Web site at [GEAppliances.com](http://GEAppliances.com), contact your local authorized GE dealer, or call the GE Answer Center®, toll-free, 800.626.2000.



*Innovative, award-winning products that are GE's Fastest, Biggest and Quietest.*



### *GE Profile Arctica™ Refrigerator*

GE has invested hundreds of millions of dollars to make 2001 refrigerators more innovative and appealing than ever. The result is Arctica, The Ultimate in Refrigeration.™

Exclusive CustomCool™ technology chills, thaws and preserves! Our exclusive ClimateKeeper™ temperature management system makes Arctica the perfect haven for fresh foods. And the Arctica refrigerator's clean contours and lines convey a look of utmost sophistication.

From the fresh technology to the fresh style, Arctica gives you exactly what you want.



### *GE Profile Advantium™ Oven*

The latest in GE speedcooking innovation, the award-winning Advantium oven harnesses the energy of light to deliver great-tasting foods in minutes. It bakes, broils, browns, roasts and even grills, with no preheating. And there's a new Advantium in town. The versatile, easy-to-install Advantium 120 oven is now available.





### *GE Profile Spacemaker® Microwave Oven*

Our award-winning microwave ovens have been redesigned with improved built-in vents and cooktop lighting to provide optimal cooking performance and convenience. For kitchens with a 36" cooktop, GE offers an upgraded 36" model as the perfect complement.

### *GE Profile™ Range*

Nothing combines convenient versatility, elegant design and outstanding performance like the full line of GE Profile ranges. From an array of installation options, capacity sizes and colors, including stainless steel, GE Profile offers a miraculous style that complements any kitchen décor. Plus, with impressive and user-friendly features like the TrueTemp™ system and "true" convection cooking, GE Profile ranges are ingeniously designed for everyone from the gourmet chef to the occasional cook.



### *GE Profile™ Dishwashers*

Curved design is the wave of the future, and GE is leading the way. This year, GE will roll out the industry's first contoured door dishwasher, along with an exclusive full-wrap stainless steel model. Innovatively styled inside and out, these new dishwashers appeal to discriminating tastes with a towerless wash system, Tall-Over-Tall™ capacity, an ExtraClean™ sensor and advanced sound engineering.



### *GE Profile Wizard™ Washer and Dryer*

Designed for easy operation, our intelligent washer and dryer system has touchpad controls and a powerful memory. The Wizard remembers the last load washed, and it continually adapts to a range of variables to assure a highly accurate wash every time. It's "simply brilliant."

*"The Ultimate in Refrigeration."*™

*GE*  
GE Profile Arctica™ refrigerators bring a breath of  
fresh air to your kitchen and your life. This new line

performs on demand with innovative cooling

capabilities. It impresses with its sophisticated,

dramatic design. And it offers tremendous

flexibility through a user-friendly

storage system. What's behind this

breakthrough? GE has engineered

new refrigerators to meet energy and

environmental requirements for

2001 and 2003. We've invested hundreds of

millions of dollars to make Arctica

the ultimate in refrigeration.

**CustomCool™ technology**

Exclusive CustomCool technology gives you the ability to chill and thaw much faster than ever before possible. It also lets you select just-right temperatures for a variety of fresh foods.



**ClimateKeeper™ system**

Exclusive ClimateKeeper system helps preserve refrigerator contents by providing consistent cooling.



**Contoured style**

Arctica's clean contours and lines are perfectly compatible with any kitchen setting.



**Optimal accessibility**

The interior is thoughtfully designed to offer exceptional convenience and flexibility.







Refrigeration

Cooking Products

Microwave Ovens

Dishwashers

Clothes Care

*GE Profile Arctica refrigerators offer exclusive cooling capabilities, dramatic styling and flexible features.*

## GE Profile Arctica™ Side-By-Side Refrigerators

*Specialized settings let consumers customize cooling for a variety of foods.*

GE Profile Arctica™ side-by-side refrigerators include a number of high-performance capabilities. Perhaps the most notable is our exclusive CustomCool™ technology. A fresh take on cooling, this bottom-bin feature offers three settings for different lifestyle needs:

**ExpressChill™** setting chills foods and beverages in minutes, not hours.

**ExpressThaw™** setting thaws meats and other freezer items in hours, not days.

**SelectTemp™** setting allows consumers to select just-right temperatures for specific foods.

Using these specialized settings, consumers are able to avoid the last-minute rush and simply relax. Whether the occasion calls for impromptu hors d'oeuvres for 20 or filet mignon for two, CustomCool takes care of everything.



**It chills!**



**It thaws!**



**It preserves!**



*CustomCool express settings speed up thawing and chilling, and a variable temperature setting assists in food preservation.*





### Easy access

Slide 'n Store™ freezer baskets extend fully, making foods accessible. Wire mesh design allows air to circulate.



### Consistent temperature

Our exclusive ClimateKeeper™ system makes Arctica the perfect haven for fresh foods.



### Brilliant lighting

The revolutionary tri-level lighting system brightens the fresh food compartment with up to 200 watts of light.



### Tall dispenser

The LightTouch! dispenser fills tall orders, accommodating everything from blenders to pitchers.

## GE Profile Arctica™ Side-By-Side Models: 29 to 25 cu. ft.

**These models include** • Contoured doors • ClimateKeeper™ system • Electronic touch temperature controls • Digital temperature display • CustomCool™ technology • FrostGuard™ technology • SmartWater™ Plus filtration system • Beverage rack • Quick Ice™ feature • Water filter indicator light • LightTouch!™ tall dispenser with child lock and door alarm • Premium quiet design • Integrated shelf support system • QuickSpace™ shelf • Two slide-out, spill-proof glass shelves • ClearLook™ adjustable door bins • Gallon door storage • Slide 'n Store™ full-extension freezer baskets • Wire slide-out freezer basket • Tilt-out wire freezer door bins • Contoured Profile handles • Tri-level lighting • NeverClean™ condenser

**Note: bold = feature upgrade from previous model**

**ONLY GE HAS IT!**



CustomCool Technology chills food and beverages in minutes not hours, thaws frozen food in hours not days and allows you to select just-right temperatures for fruits and vegetables.

**ONLY GE HAS IT!**



ClimateKeeper System combines an air tower, electronic sensors and electronic touch controls to keep temperatures consistent and help preserve refrigerator contents.



Slide 'n Store Freezer Baskets extend fully, making foods accessible. Wire mesh design allows air to circulate.



Refreshment Center provides easy access to frequently used items.



Not all features available on all models.  
For additional features, specifications and color availability, refer to page 92.

### GE Profile™ Dispenser models

#### **PSS29NHM**

• 28.7 cu. ft. capacity • Refreshment center

**PSS27NHM** (not shown)

• 26.8 cu. ft. capacity

**PSS27SHM** (not shown)

• 26.8 cu. ft. capacity • **Stainless steel model with black handles and black dispenser**

### GE Profile™ Dispenser models

#### **PSS29NGM**

• 28.6 cu. ft. capacity

**PSS27NGM** (not shown)

• 26.6 cu. ft. capacity

**PSS25NGM** (not shown)

• 25.3 cu. ft. capacity



As an ENERGY STAR® partner, GE has determined that this product meets the ENERGY STAR® guidelines for energy efficiency.

(Model PSS25NGM)



**These models include** • Contoured doors • ClimateKeeper™ system • Electronic touch temperature controls • FrostGuard™ technology • SmartWater™ Plus filtration system • Beverage rack • Quick Ice™ feature • Water filter indicator light • LightTouch! tall dispenser with child lock and door alarm • Premium quiet design • Integrated shelf support system • QuickSpace™ shelf • ClearLook™ adjustable door bins • Gallon door storage • Two slide-out, spill-proof glass shelves • Wire slide-out freezer baskets • Contoured Profile handles

• NeverClean™ condenser

**Note: bold = feature upgrade from previous model**



Quick Ice feature provides ice up to 40 percent faster than normal settings for parties and social gatherings.



Taller LightTouch! Dispenser fills sport bottles, pitchers, even blenders! Delivers chilled filtered water, crushed or cubed ice.



Premium Quiet Design—GE's best noise reduction system.

**ONLY GE HAS IT!**



FrostGuard Technology reduces freezer burn.



### GE Profile™

#### Dispenser models

##### **PSS27SGM**

• 26.6 cu. ft. capacity • Stainless steel  
• CustomCool™ technology • Digital temperature display • Slide 'n Store™ full-extension freezer baskets • Tri-level lighting

##### **PSS25SGM** (not shown)

• 25.3 cu. ft. capacity • Stainless steel



As an ENERGY STAR® partner, GE has determined that this product meets the ENERGY STAR® guidelines for energy efficiency.

(Model PSS25SGM)



### GE Profile™

#### Dispenser models

##### **PSS29MGM**

• 28.7 cu. ft. capacity • Dual-level lighting

##### **PSS27MGM** (not shown)

• 26.7 cu. ft. capacity

##### **PSS25MGM** (not shown)

• 25.4 cu. ft. capacity



As an ENERGY STAR® partner, GE has determined that this product meets the ENERGY STAR® guidelines for energy efficiency.

(Model PSS25MGM)

# GE Profile Arctica CustomStyle™ Side-By-Side Refrigerators

## Trimless and installed trim models



### GE Profile™ Trimless Model PSC23NGMWW

#### Trimless models:

#### Installation made easy, simply slide in.

Trimless CustomStyle units install by simply sliding into—way into—the space between cabinets. Because they align with counters, CustomStyle refrigerators instantly look built-in. And there's nothing to attach or custom build. Available in stainless steel, white, bisque and black. Trimless models shown on pages 16 and 17.

### Side-By-Side Refrigerators

*Others extend up to 33" from wall*



*GE CustomStyle extends 26" from wall*



### GE Profile™ Installed Trim Model PSI23MGMBB

#### Installed trim models:

#### Another way to customize.

Whether you're building a brand-new kitchen or planning for a renovation, GE opens a world of design possibilities. CustomStyle refrigerators accept a variety of door panels: stainless steel, as well as acrylic panels in white, bisque or black from GE. You also have the option of making or installing your own custom wood panels. The choices are simple. Installed trim models shown on page 17.

Because they install nearly flush with the cabinets, these refrigerators save floor space.

They don't stick out into the kitchen!

*Shown with custom wood panels.*



## GE Profile Arctica CustomStyle™ Side-By-Side trim and panel options

### Installed Trim Models

#### Optional door panels are another way to customize.

When you choose GE CustomStyle refrigerators with installed trim, the choices of design are practically endless. Order stainless steel panels or acrylic panels in white, bisque or black from GE, or make and install your own custom wood panels to accent the cabinetry in your kitchen.

#### Panels available:

Model PSI23MCM is available with white, bisque, black or your own custom wood panel options.

Models PSI23MGM and PSI23NGM are available with stainless steel, white, bisque, black or your own custom wood panel options.

### Dispenser Models



#### PSI23NGMBB

Shown with optional black acrylic panels. SmartWater™ Plus filtration system, LightTouch! dispenser.



#### PSI23NGMBB

Shown with custom wood panels. SmartWater Plus filtration system, LightTouch! dispenser.



#### PSI23MGMWW

Shown with optional white acrylic panels. SmartWater Plus filtration system, LightTouch! dispenser.



#### PSI23MGMCC

Shown with custom wood panels. SmartWater Plus filtration system, LightTouch! dispenser.



#### PSI23NGMCC

Shown with optional bisque acrylic panels. SmartWater Plus filtration system, LightTouch! dispenser.

### Non-Dispenser Models



#### PSI23MCMBB

Shown with optional black acrylic panels. Non-dispenser.



#### PSI23MCMWW

Shown with optional white acrylic panels. Non-dispenser.



**Optional collar trim is available for all models listed here.** The optional collar trim is just another way GE lets you integrate our CustomStyle refrigerators into your kitchen decor. Available in stainless steel, white, bisque and black, this trim frames the refrigerator facade, creating the finished look of a built-in, custom kitchen. Collar trim: TRMBISSS, TRMBISWW, TRMBISCC, TRMBISBB.

## GE Profile Arctica CustomStyle™ Side-By-Side Models: 23 cu. ft.

**These models include** • ClimateKeeper™ system • Electronic touch temperature controls • FrostGuard™ technology • SmartWater™ Plus filtration system • Beverage rack • Quick Ice™ feature • Water filter indicator light • LightTouch!™ tall dispenser with child lock and door alarm • Premium quiet design • Integrated shelf support system • Two slide-out, spill-proof glass shelves • QuickSpace™ shelf • ClearLook™ adjustable door bins • Gallon door storage • Wire slide-out freezer baskets • Tilt-out wire freezer door bins • Contoured Profile handles • NeverClean™ condenser

**Note: bold = feature upgrade from previous model**

**ONLY GE HAS IT!**



ClimateKeeper™ System combines an air tower, electronic sensors and electronic touch controls to keep temperatures consistent and help preserve refrigerator contents.

**ONLY GE HAS IT!**



The ExpressThaw™ Setting in the exclusive CustomCool Bin thaws meats and other freezer items in hours, not days!

**ONLY GE HAS IT!**



SmartWater Plus Filtration System provides clean, better-tasting water and ice through the LightTouch!™ dispenser.



Premium Quiet Design—GE's best noise reduction system.



### GE Profile™

*Trimless dispenser models*

#### **PSC23SHM**

• 22.7 cu. ft. capacity • **Stainless steel** • **Refreshment center** • Digital temperature display • CustomCool™ technology • Slide 'n Store™ full-extension freezer baskets • Tri-level lighting • Trimless rounded doors

#### **PSC23NHM** (not shown)

• 22.7 cu. ft. capacity



### GE Profile™

*Trimless dispenser models*

#### **PSC23NGM**

• 22.6 cu. ft. capacity • Digital temperature display • CustomCool technology • Slide 'n Store™ full-extension freezer baskets • Tri-level lighting

#### **PSC23SGM** (not shown)

• 22.6 cu. ft. capacity • **Stainless steel** • Trimless rounded doors, **black contoured Profile™ handles and black dispenser**



### GE Profile™

*Trimless dispenser model*

#### **PSC23MGM**

• 22.7 cu. ft. capacity • Dual-level lighting

Not all features available on all models.

For additional features, specifications and color availability, refer to page 93.



**GE Profile™***Installed trim dispenser model***PSI23NGM**

- 22.6 cu. ft. capacity • Digital temperature display • CustomCool™ technology • Slide 'n Store™ full-extension freezer baskets • Tri-level lighting
- Squared doors

*Trimless dispenser model***PSI23SGM** (not shown)

- 22.6 cu. ft. capacity • **Stainless steel** • **Digital temperature display** • CustomCool technology
- **Slide 'n Store full-extension freezer baskets** • **Tri-level lighting** • Squared doors, full-length handles with stainless steel appearance and black dispenser

**GE Profile™***Trimless non-dispenser model***PSI23SCM**

- 22.7 cu. ft. capacity • **Stainless steel**
- Squared doors, **full-length handles with stainless steel appearance**

*Installed trim non-dispenser model***PSI23MCM** (not shown)

- 22.7 cu. ft. capacity • Squared doors, full-length color-matched handles

**GE Profile™***Installed trim dispenser model***PSI23MGM**

- 22.7 cu. ft. capacity • Squared doors, full-length color-matched handles
- Dual-level lighting

**Your SmartWater™ Replacement Filter** (GWF) can be ordered through the GE Answer Center® (1.800.626.2000), Customer Service Parts Center (1.800.626.2002) or through your Authorized GE Dealer.

**Water Filter Warranty:**  
Limited 30 days parts only warranty.

System Tested and Certified by NSF International against ANSI/NSF Standards 42 & 53 for:

Standard No. 42 Aesthetic Effects:  
Chemical Unit  
Taste and Odor Reduction  
Chlorine Reduction, Class I  
Mechanical Filtration Unit  
Particulate Reduction, Class I

Standard No. 53 Health Effects:  
Chemical Reduction Unit  
Lead Reduction  
Mechanical Filtration Unit  
Turbidity Reduction  
Cyst Reduction

**SmartWater™ models only**



# GE Profile Arctica™ Top-Freezer Refrigerators

## Top Performance.

Elegant, curvaceous design graces Arctica top-freezer refrigerators, which are distinguished by radius doors and rounded storage bins.

Arctica's performance is even more dramatic. The innovative ClimateKeeper™ system adapts to levels of activity and location, keeping the temperature on an even keel.

Arctica top-freezers not only provide precise temperature management, but they also offer optimal ease and accessibility.

Adjustable storage bins put all contents within convenient reach, while the dual fresh food lighting system and freezer dome light let you fully satisfy your midnight cravings.



*Stunningly styled inside and out, the GE Profile Arctica top-freezer refrigerators give you a brand-new way to enhance your kitchen.*



**ONLY GE HAS IT!**

### Rapid recovery

Exclusive ClimateKeeper system quickly recovers from such variables as frequent door openings and changes in external temperature.



**ONLY GE HAS IT!**

### Freezer innovation

Exclusive FrostGuard™ technology reduces freezer burn.



## GE Profile Arctica™ Top-Freezer Models: 25 to 22 cu. ft.

**These models include** • ClimateKeeper™ system • FrostGuard™ technology • Premium quiet design • ShelfSaver™ rack • Lift-off, slide-out, spill-proof glass shelves, three adjustable/split • Two adjustable humidity vegetable/fruit crispers • Adjustable temperature deli pan • Pivot-out pan removal system • One full-width, fixed tall bottle door bin • ClearLook™ adjustable gallon door bins • Equipped for optional electronic icemaker • Spill-proof freezer floor • Tilt-out locking freezer door bin • Improved upfront lighting • NeverClean™ condenser

**Note: bold = feature upgrade from previous model**



Convenient Upfront Electronic Touch Temperature Controls are extremely accurate, easy to see and easy to set.



Pivot-Out Pan Removal System makes cleaning crispers easier than ever.



Locking Tilt-Out Freezer Bin conveniently tilts forward for easy access to items stored inside.



New Seamless Spill-Proof Freezer Floor Design makes freezer cleanup simple!



### GE Profile™ Non-dispenser models

**PTS25SBM** (not shown)  
• 24.6 cu. ft. capacity • **Stainless steel**

**PTS22LBM**  
• 21.7 cu. ft. capacity

**PTS25LBM** (not shown)  
• 24.6 cu. ft. capacity

**PTS22SBM** (not shown)  
• 21.7 cu. ft. capacity • **Stainless steel**

# GE Profile CustomStyle™ Top-Freezer Refrigerators

*Trimless and installed trim models*



## GE Profile™ Trimless Model PTC22SBMBS

### Trimless models:

#### Installation made easy, simply slide in.

Trimless CustomStyle units install by simply sliding into—way into—the space between cabinets. Because they align with counters, CustomStyle refrigerators instantly look built-in. And there's nothing to attach or custom build. Available in stainless steel, white, bisque and black.

Trimless models shown on page 22.



## GE Profile™ Installed Trim Model PTI22SFMBS

### Installed trim models:

#### Another way to customize.

Whether you're building a brand-new kitchen or planning for a renovation, GE opens a world of design possibilities. CustomStyle refrigerators accept a variety of door panels: Stainless steel, as well as acrylic panels in white or black. The choices are simple.

Installed trim models shown on page 22.

## Top-Freezer Refrigerators

*Others extend  
up to 31" from wall*



31"

*GE CustomStyle  
extends 26"  
from wall*



26"

*saves  
nearly 5"*

Because they install nearly flush with the cabinets, these refrigerators save floor space. They don't stick out into the kitchen!



## GE Profile CustomStyle™ Top-Freezer trim and panel options

### Installed Trim Models

**Optional door panels are another way to customize.**

When you choose GE CustomStyle refrigerators with installed trim, the choices of design are practically endless. Order stainless steel panels or acrylic panels in white or black from GE, or make and install your own custom wood panels to accent the cabinetry in your kitchen.

#### Panels available:

Models PTI22MBM and PTI22MFM are available with stainless steel, white, black or your own custom wood panel options.

### Dispenser Models



**PTI22MFMWW**  
Shown with optional white acrylic panels. SmartWater™ Plus filtration system, LightTouch! dispenser.



**PTI22MFMBB**  
Shown with optional stainless steel panels. SmartWater Plus filtration system, LightTouch! dispenser.



**PTI22MFMBB**  
Shown with custom wood panels. SmartWater Plus filtration system, LightTouch! dispenser.



**PTI22SFMBB**  
Shown with installed stainless steel panels. SmartWater Plus filtration system, LightTouch! dispenser.

### Non-Dispenser Models



**PTI22MBMBB**  
Shown with optional black acrylic panels. Non-dispenser.



**PTI22MBMBB**  
Shown with optional stainless steel panels. Non-dispenser.



**PTI22MBMBB**  
Shown with custom wood panels. Non-dispenser.



**Optional collar trim is available for all models listed here.**

The optional collar trim is just another way GE lets you integrate our CustomStyle refrigerators into your kitchen decor. Available in stainless steel, white and black, this trim frames the refrigerator facade, creating the finished look of a built-in, custom kitchen. Collar trim: TRMBISSS, TRMBISWW, TRMBISBB.

## GE Profile CustomStyle™ Top-Freezer Models: 22 cu. ft.

**These models include** • Upfront illuminated temperature controls • Beverage rack • Adjustable slide-out, spill-proof glass shelves • Adjustable humidity vegetable/fruit crispers • Slide-out, spill-proof crisper cover • ClearLook™ gallon door bins • Quick Store™ bin • Adjustable temperature meat pan • Adjustable dairy compartment • Upfront fresh food lighting

**Note: bold = feature upgrade from previous model**



SmartWater™ Filtration System provides clean, better-tasting water and ice through the LightTouch! dispenser.



QuickSpace™ Shelf slides back to store tall items.



ClearLook™ Adjustable Door Bins store gallon containers with ease.



LightTouch! Dispenser delivers cubes, crushed ice and chilled water.



### GE Profile™

#### Trimless dispenser models

##### **PTC22SFM**

• 21.7 cu. ft. capacity • **Stainless steel**  
• LightTouch! dispenser delivers cubes, crushed ice and chilled water • SmartWater™ filtration system • Trimless rounded doors, black Profile™ handles and black dispenser

##### **PTC22MFM** (not shown)

• 21.7 cu. ft. capacity

#### Trimless non-dispenser models

##### **PTC22SBM** (not shown)

• 21.9 cu. ft. capacity • **Stainless steel**  
• **Trimless rounded doors, black Profile™ handles**

##### **PTC22MBM** (not shown)

• 21.9 cu. ft. capacity



As an ENERGY STAR® partner, GE has determined that this product meets the ENERGY STAR® guidelines for energy efficiency.

(Models PTC22SFM and PTC22MFM)



### GE Profile™

#### Installed trim dispenser models

##### **PTI22SFM**

• 21.7 cu. ft. capacity • **Stainless steel**  
• **Factory-installed stainless steel panels, trim, full-length handles and black dispenser**  
• LightTouch! dispenser delivers cubes, crushed ice and chilled water • SmartWater™ filtration system

##### **PTI22MFM** (not shown)

• 21.7 cu. ft. capacity

#### Installed trim non-dispenser model

##### **PTI22MBM** (not shown)

• 21.9 cu. ft. capacity



As an ENERGY STAR® partner, GE has determined that this product meets the ENERGY STAR® guidelines for energy efficiency.

(Models PTI22SFM and PTI22MFM)

Not all features available on all models.  
For additional features, specifications and color availability, refer to page 95.



## GE Profile™ Bottom-Freezer Models: 18 cu. ft.



Modular Fresh Food Gallon Door Storage provides maximum storage flexibility.



Spill-Proof Shelves help contain spills for ease of cleaning.



ShelfSaver™ Rack provides a new space for odd shapes and sizes.



Brita Filtered Water Door Module holds up to seven liters of water.



### GE Profile™ Bottom-Freezer Drawer Models

#### PDS18SBM

- 18.1 cu. ft. capacity • **Stainless steel** • **Brita® water door module**
- **ShelfSaver™ rack** • Four adjustable split, spill-proof glass shelves (two slide-out) • **One full-width, two split Slide 'n Store™ freezer baskets** • Adjustable humidity vegetable/fruit crispers • Snack pan
- Modular gallon door bins • Deluxe quiet design • Equipped for optional automatic icemaker

#### PDS18LBM (not shown)

- 18.1 cu. ft. capacity

Not all features available on all models.  
For additional features, specifications and color availability, refer to page 96.

*Technology for discriminating  
tastes and demanding schedules.*



At today's busy speed of life, putting

healthy, home-cooked meals on

the table can be a real challenge.

The solution is **Advantium™**

Speedcook technology, a revolutionary

cooking process that uses light

to deliver fast, flavorful results.

This award-winning light technology

is now available in the Advantium oven

and the new **Advantium 120** oven.

Both offer a change of cooking

pace, bringing tremendous

convenience to your kitchen.

#### **Speed performance**

Imagine the luxury of preparing a salmon steak in less time than it takes to set the table. Or the convenience of 16 stuffed mushrooms cooked in five minutes with the press of a button. This is the extraordinary capability of the Advantium ovens' Speedcook technology.



#### **Great-tasting food**

Advantium ovens cook amazingly fast, with great-tasting results. Foods not only cook faster with light, but they also retain their natural juices, moisture and flavor.



#### **Versatility**

Advantium ovens let you prepare oven-quality meals you never dreamed of cooking during the week. They bake, broil, brown, roast and grill, with no preheating.



#### **Installation flexibility**

The Advantium wall oven can be installed by itself, over a traditional wall oven or over a warming drawer. The Advantium above-the-cooktop ovens can be conveniently located over a counter, range or cooktop.







## GE Profile Advantium™ Ovens

*Great-tasting food up to eight times faster!\**

Providing the technology you need when time is of the essence, the Advantium oven proves that faster is better.

The Advantium oven harnesses the energy of light to deliver great-tasting food in mere minutes. Its revolutionary Speedcook technology bakes, broils, browns, roasts and even grills food, with no preheating!

Serve mouth-watering filet mignon in six minutes, spicy barbecued ribs in 18 minutes or broccoli casserole in 16 minutes.

The possibilities are almost endless!

\*Compared to a conventional oven.

*Favorite foods cook in minutes.*

*Compare the Advantium oven to a conventional oven.*

Food	Advantium Oven	Conventional Oven
Whole Chicken	20 minutes	119 minutes
Breaded Seafood Fillets	3-1/2 minutes	30 minutes
Crescent Rolls	4-1/2 minutes	18 minutes
Chocolate Chip Cookies	4 minutes	16 minutes
Baked Potatoes	10 minutes	83 minutes
Pepperoni Pizza	5-1/2 minutes	23-1/2 minutes







Speedcook technology harnesses the power of light to cook foods up to eight times faster than a conventional oven. And there's no preheating required.



The Advantium oven delivers great-tasting food, fast. Rolls are browned to golden perfection in 4-1/2 minutes. And filet mignon is moist and flavorful within six minutes.



The revolutionary Advantium oven comes preprogrammed with more than 100 of your favorite dishes. With the easy-to-use controls, just select your dish, press START and get ready to eat.



Cooking at home costs less—less than restaurant food, less than gourmet carryout. And with no preheating and shorter cook times, the Advantium oven saves time.

## *GE Profile Advantium™ Wall Ovens*

***These models include*** • More than 100 preprogrammed menu items • 200-dish cookbook • Cooking conversion guide with tips • Microwave with sensor • Four cooking trays: three for speedcooking, one for microwave mode • Family-size, easy-to-clean stainless steel interior • Complete cooking reminder • Child lockout • Custom recipe saver



*GE Profile™*  
*Wall Oven*  
**SCB2001CSS** Stainless steel



*GE Profile™*  
*Wall Oven*  
**SCB2000CCC** Bisque  
**SCB2000CWW** White on white (not shown)  
**SCB2000CBB** Black on black (not shown)



# GE Profile Advantium™ Above-the-Cooktop Ovens

- These models include** • More than 100 preprogrammed menu items • 200-dish cookbook • Cooking conversion guide with tips • Microwave mode • Four cooking trays: three for speedcooking, one for microwave mode • Family-size, easy-to-clean stainless steel interior • Complete cooking reminder • Child lockout • Custom recipe saver • Full-view cooktop lighting



**GE Profile™**  
*Above-the-Cooktop Oven*  
**SCA2000BBB** Black on black



**GE Profile™**  
*Above-the-Cooktop Oven*  
**SCA2000BWW** White on white  
**SCA2001BSS** Stainless steel (not shown)  
**SCA2000BCC** Bisque (not shown)

Not all features available on all models.  
For additional features, specifications  
and color availability, refer to page 97.

Refrigeration

Advantium Cooking

Microwave Ovens

Dishwashers

Clothes Care

# *The New GE Profile Advantium™ 120 Oven*

*Great-tasting food up to four times faster!\**

Introducing the latest in GE Speedcook innovation: the GE Profile Advantium 120 oven. Unlike conventional ovens that take their own sweet time, the Advantium 120 cooks with light to deliver great-tasting meals in minutes. Combining speed and versatility, the new Advantium 120 oven helps you rediscover the joy of cooking!

This new oven offers revolutionary Speedcook technology, along with traditional oven, microwave and warming capabilities. It cooks up everything from pizza to peach cobbler—fast!

\*Compared to a conventional oven.

*Favorite foods cook in minutes.  
Compare the Advantium 120 oven to a conventional oven.*

Food	Advantium 120 Oven	Conventional Oven
Whole Chicken	40 minutes	119 minutes
Breaded Seafood Fillets	12 minutes	30 minutes
Crescent Rolls	10 minutes	18 minutes
Chocolate Chip Cookies	10 minutes	16 minutes
Baked Potatoes	11 minutes	83 minutes
Pepperoni Pizza	13 minutes	23-1/2 minutes



This flexible, above-the-cooktop configuration makes the most of your kitchen space and installs with ease. Just mount it over a counter, range or cooktop and plug it into any standard 120-volt power outlet.



The Advantium 120 oven offers a full range of cooking modes including Speedcook, traditional oven, microwave and warming.



## GE Profile Advantium™ 120 Above-the-Cooktop Ovens

**These models include** • Four cooking modes: Speedcook, traditional oven, microwave and warming • More than 100 preprogrammed menu items • 200-dish cookbook • Cooking conversion guide with tips • Sophisticated contoured design • Family-size, easy-to-clean stainless steel interior • Custom recipe saver • Complete cooking reminder • Child lockout • Full-view halogen cooktop lighting



**GE Profile™**  
**Above-the-Cooktop Oven**  
**SCA1001DSS** Stainless steel



**GE Profile™**  
**Above-the-Cooktop Oven**  
**SCA1000DWW** White on white  
**SCA1000DCC** Bisque (not shown)  
**SCA1000DBB** Black on Black (not shown)

Not all features available on all models.  
For additional features, specifications  
and color availability, refer to page 97.

Refrigeration

Advantium Cooking

Microwave Ovens

Dishwashers

Clothes Care

*GE provides cooking  
inspiration through innovation.*



GE helps you make the most of your meals, bringing  
**innovation** to every aspect of your cooking needs.

Our cooking products cater to your **flexibility**

requirements with a wide range of heat settings and

smooth, **easy-to-clean** surfaces. They also

make a high-performance contribution with

**advanced** cooking capabilities and

an array of **convenience** functions.

And when it comes to style, GE offers

a variety of **attractive** options.

Whether you choose black or stainless,

built-in or slide-in, you're sure to find the

perfect complement to your decor.

#### **Gas cooktops**

Our gas cooktops boast 15,000 BTUs of cooking power, delivering incredible cooking flexibility with a 12,000-BTU element for boiling and a 700-BTU element for simmering.



#### **Electric cooktops**

Our electric cooktop line gives you a vast array of versatile options.

Expandable heating elements, electronic controls and a warming zone are just a few of the many conveniences.



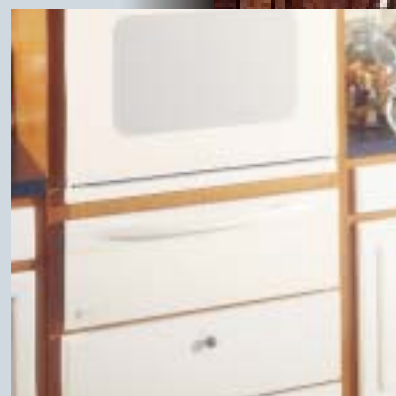
#### **Built-in wall ovens**

Built-in wall ovens make a dramatic design statement. Installed in a wall, under a counter or in a cabinet, these ovens integrate beautifully into any kitchen.



#### **Warming drawer**

GE's essential warming drawer helps you keep just-cooked foods warm while you're waiting for guests or preparing other dishes.



Refrigeration

Built-In Cooking Products

Microwave Ovens

Dishwashers

Clothes Care





## *GE Profile™ Built-In Single and Double Wall Ovens*

*GE Profile™ wall ovens perform beautifully in any kitchen.*

Innovatively styled inside and out, GE Profile wall ovens offer the utmost in cooking convenience and contemporary elegance.

These high-performance ovens are available in 30" and 27" widths. Both 30" and 27" ovens, double and single, deliver accurate, consistent heating and total temperature control with our exclusive TrueTemp™ technology. GE Profile wall ovens also offer "true European convection" capability, which allows infinite possibilities. Chewy gourmet cookies. Slow-roasted, seasoned beef. Crisp, fresh-baked bread. It's all possible with convection cooking.

The spacious interior and multiple baking racks provide added convenience. You can put the main course on one rack, side dishes on another and still have plenty of room for dessert! And the large viewing window and brilliant halogen lights help you keep tabs on everything.



*JTP56SD Double Oven*

*The versatile design works with every cooking style, every kitchen.*

GE Profile™ wall ovens give you everything you need to get cooking. Among the many convenient features is the proof setting, which allows dough to rise more quickly and efficiently.

Versatility extends to installation, as well. GE Profile wall ovens go wherever they're needed: in a wall, between cabinets or under a counter. All models fit into common cutouts, making it easy to replace an existing oven with an upgrade. And the flush installation appearance makes the most of your kitchen space.



## GE Profile™ Wall Ovens

*Convection capability gives you more ways to cook great food!*



1. Conventional Baking



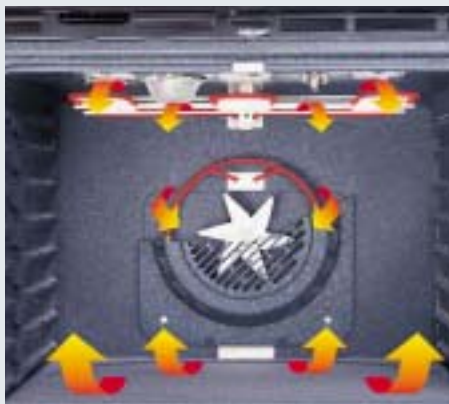
2. Conventional Broil  
(variable temp)



3. Convection Bake



4. Convection Roast



GE Profile wall ovens provide excellent convection heat capability. Roasts are beautifully browned, yet tender and juicy inside. Cookies are baked to golden perfection. And meats are broiled to your liking.

All models deliver “true European convection” cooking by means of a third dual-loop heating element located in the back wall. A fan evenly circulates air throughout the oven cavity. This process delivers uniform, savory results. Convection cooking also saves time and allows you to cook at lower temperatures.

*GE Profile™ wall ovens are remarkably easy to clean.*



Our CleanDesign wall ovens are distinguished by a smooth, elegant surface that blends almost seamlessly with surrounding cabinetry. But the real beauty of these ovens is their sleek styling, which makes cleanup simple. There are no endcaps on the control panels or handles, nor are there any rims or gaps that can catch grease and dirt. And, of course, the oven itself is self-cleaning.



*And you get superb results with minimal effort.*



*GE's SmartSet Electronic controls are simple to understand and operate. Just read and touch.*



Setting the time and temperature is easy. For example, if you want to bake at 350°, you press 3...5...0... then press Start.



Centigrade or Fahrenheit, it's your choice.



GE touch pads are extremely user-friendly. Increase or decrease temperature or time with a touch of the finger.



GE's SmartLogic controls constantly monitor oven temperatures, automatically making necessary adjustments. If you wish to manually switch from conventional to convection, all you have to do is press a button.



**Seven-rack baking.  
A GE Exclusive!**

Cook more at once! Now it's possible to fit even more baking dishes and cookie sheets with GE's exclusive Seven-Rack Baking.

## GE Profile™ Built-In Double Ovens: 30" and 27" Electric

**These models include** • The largest\* capacity wall oven in America! • Flush appearance installation • TrueTemp™ System • SmartSet Electronic Controls • Certified Sabbath mode • CleanDesign oven interior • Integrated designer handles • Control lock capability • Big ClearView™ windows • Upfront halogen interior oven lights • Variable broil

**Convection Upper Oven:** • Convection Bake • Convection Roast • Roasting rack • Proofing option • Three heavy-duty oven racks • Automatic meat thermometer

**Thermal Lower Oven:** • Two heavy-duty oven racks



True European Convection ovens provide even cooking and superior baking results.



**ONLY GE HAS IT!**

Cook more at once! Now it's possible to fit even more baking dishes and cookie sheets with GE's exclusive Seven-Rack Baking.



The ideal environment for proofing dough. Simply set for Proof and dough will rise to perfection.

### Convection Upper/Self-Clean Lower



#### GE Profile™ 30" Built-In Double Oven

**JTP56SD** Stainless steel  
• Fits most 30" cabinets • Extra-large 4.2 cu. ft. self-cleaning ovens with Delay Clean option • Eight-pass bake element

#### Convection Upper Oven

• Exclusive seven embossed rack positions

#### Thermal Lower Oven

• Six embossed rack positions

### Convection Upper/Self-Clean Lower



#### GE Profile™ 30" Built-In Double Oven

**JTP56CD** Bisque  
**JTP56WD** White on white (not shown)  
**JTP56BD** Black on black (not shown)

Not all features available on all models.  
For additional features, specifications and color availability, refer to page 98.

\*Among leading manufacturers' brands, excluding JTP56 and JTP18.

### Convection Upper/Self-Clean Lower



#### GE Profile™

##### 27" Built-In Double Oven

**JKP56SD** Stainless steel

- Fits most 27" cabinets • Extra-large 3.9 cu. ft. self-cleaning ovens with Delay Clean option • Six-pass bake element

**JKP56WD** White on white (not shown)

**JKP56CD** Bisque (not shown)

**JKP56BD** Black on black (not shown)

### GE Profile™ Built-In Microwave/Single Oven: 30" Electric

#### Microwave Upper/Convection Lower



#### GE Profile™

##### 30" Built-In Double Oven

**JTP95WD** White on white

##### Microwave Upper Oven

- 1.6 cu. ft. cavity • Sensor Cooking Controls for Auto Cook and Reheat • Auto Defrost • Turntable • 1000 watts

##### Convection Lower Oven

- Extra-large 4.2 cu. ft. self-cleaning oven with Delay Clean option • SmartSet Electronic Controls • CleanDesign oven interior • Integrated designer handle • Control lock capability • Big ClearView™ window • Variable broil • Convection Bake • Convection Roast • Roasting rack • Three oven racks • Exclusive seven embossed rack positions • Automatic meat thermometer

**JTP95BD** Black on black (not shown)



## GE Profile™ Built-In Single Ovens: 30" and 27" Electric

**These models include** • The largest\* capacity wall oven in America! • Flush appearance installation • TrueTemp™ System • SmartSet Electronic Controls • Certified Sabbath mode • CleanDesign oven interior • Integrated designer-style handle • Control lock capability • Big ClearView™ window • Convection Bake • Convection Roast • Roasting rack • Proofing option • Variable broil • Upfront halogen interior oven light • Three oven racks • Automatic meat thermometer



True European Convection ovens provide even cooking and superior baking results.



Cook more at once! Now it's possible to fit even more baking dishes and cookie sheets with GE's exclusive Seven-Rack Baking.



The ideal environment for proofing dough. Simply set for Proof and dough will rise to perfection.

### Installation Flexibility

Wall ovens can be installed in a wall or most cabinets, or undercounter installation with either a gas or electric cooktop above.

### Self-Clean Convection



### GE Profile™ 30" Built-In Single Oven

- JTP18WD** White on white
- Fits most 30" cabinets • Extra-large 4.2 cu. ft. self-cleaning oven with Delay Clean option
  - Eight-pass bake element • Exclusive seven embossed rack positions
- JTP18SD** Stainless steel (not shown)
- JTP18CD** Bisque (not shown)
- JTP18BD** Black on black (not shown)

### Self-Clean Convection



### GE Profile™ 27" Built-In Single Oven

- JKP18SD** Stainless steel
- Fits 27" cabinets • Extra-large 3.9 cu. ft. self-cleaning oven with Delay Clean option
  - Six-pass bake element
- JKP18WD** White on white (not shown)
- JKP18CD** Bisque (not shown)
- JKP18BD** Black on black (not shown)

Not all features available on all models. For additional features, specifications and color availability, refer to page 99.

\*Among leading manufacturers' brands, excluding JTP56 and JTP18.

# GE Profile™ Built-In Warming Drawers: 30" and 27" Electric

**These models include** • Flush appearance installation • Temperature control with Proof, Low, Medium and High settings • Crisp/Moist humidity control • ON/OFF switch • "ON" indicator light • One-half rack • Frameless drawer front • Integrated designer-style handle

• Removable stainless steel drawer pan • Five-piece commercial pan set (available at additional cost)



Half Rack provides even heat distribution and allows extra space to keep food warm and tasty before serving.



Warming Drawer keeps plates warm, ready and waiting to serve that special meal.



Hidden Temperature Control has Proof, Low, Medium and High settings for warming flexibility.



## GE Profile™ Built-In Warming Drawer

**JTD910SB** Stainless steel

• 30" width

**JKD910SB** Stainless steel (not shown)

• 27" width



## GE Profile™ Built-In Warming Drawer

**JTD910CB** Bisque

• 30" width

**JKD910CB** Bisque (not shown)

• 27" width



## GE Profile™ Built-In Warming Drawer

**JTD910BB** Black on black

• 30" width

**JTD910WB** White on white (not shown)

• 30" width

**JTD910AB** Almond on almond (not shown)

• 30" width

**JKD910WB** White on white (not shown)

• 27" width

**JKD910AB** Almond on almond (not shown)

• 27" width

**JKD910BB** Black on black (not shown)

• 27" width

Not all features available on all models.  
For additional features, specifications  
and color availability, refer to page 100.

Refrigeration

Built-In Cooking Products

Microwave Ovens

Dishwashers

Clothes Care

## *GE Profile™ Built-In Cooktops*

*GE caters to today's busy cooks with a wide variety of cooktop options.*



*GE cooktops make a dramatic difference in the kitchen, both in terms of appearance and performance.*

Distinguished by a continuous, smooth surface, these cooktops add immediate visual interest. High-tech features include an electronic sensor that automatically adjusts the size of the element to fit the pan, a sensor that indicates when an element is left on and a convenient warming option.



*Now you can enjoy the superior performance of gas, along with ease of cleaning.*

Thanks to GE innovation, serious cooks can make gas cooktops a prominent part of their kitchens without the usual worry about cleanability. High-output or simmer burners give you precise control over heat intensity, while the smooth, sealed surface beneath these burners lets you control spills and messes. A professional-style grid of continuous burner grates allows easy pot movement. And every model wipes clean, whether it's the deep, recessed cooktop or the gas-on-glass style.





*Electric cooktops offer an array of convenient extras.*

GE electric cooktops deliver an impressive lineup of design features and performance capabilities. Among these is the bridge element, which combines two elements to create an elongated cooking area. Models with electronic controls also feature a cooking timer and lockout option.



*Gas cooktops provide outstanding performance.*

When it comes to power, our gas cooktops go to extremes. The 15,000-BTU burner supplies the intense heat needed for sautéing and stir-frying. Gas cooktops also provide precise temperature control and consistent, gentle simmering.

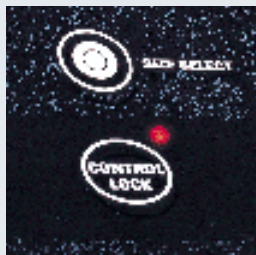
# GE Profile™ Built-In Cooktops: 36" Electric CleanDesign

**These models include** • Smooth, frameless ceramic-glass CleanDesign cooktop • Fingerprint- and scratch-resistant patterned glass cooktop • Five hot surface indicator lights • Flush mount installation capability (except Stainless steel models)

**Note: bold = feature upgrade from previous model**



Electronic controls are simple to understand and easy to operate. Just read and touch.



Helps protect your family's safety with control lockout capability.



A convenient kitchen timer lets you set a reminder at the appropriate cooking time, making precision cooking easy.



Pan presence sensor reminds you when an element is left on and automatically shuts it off when not in use.

Not all features available on all models. For additional features, specifications and color availability, refer to page 101.



## GE Profile™

### 36" Electronic Touch Control Cooktop

**JP968BC** Black on black

• **Electronic touch controls** • **Pan presence sensor** • **Pan size sensor** • **Control lockout** • **Kitchen timer** • Five ribbon heating elements: one 6", **one 7" with warmer**, one dual (6"/9") and two 7" with connecting bridge element

**JP968SC** Stainless steel (not shown)

**JP968WC** White on white (not shown)

**JP968CC** Bisque (not shown)



## GE Profile™

### 36" CleanDesign Electric Cooktop

**JP960TC** True white

• Five ribbon heating elements: one 6", one 7", one dual (6"/9") and two 7" with connecting bridge element



## GE Profile™

### 36" CleanDesign Electric Cooktop

**JP960KC** True Bisque

• Five ribbon heating elements: one 6", one 7", one dual (6"/9") and two 7" with connecting bridge element

Available September 2001



## GE Profile™

### 36" CleanDesign Electric Cooktop

**JP960SC** Stainless steel

• Five ribbon heating elements: one 6", one 7", one dual (6"/9") and two 7" with connecting bridge element

**JP960BC** Black on black (not shown)



# GE Profile™ Built-In Cooktops: 30" Electric CleanDesign

**These models include** • Smooth, frameless ceramic-glass CleanDesign cooktop • Fingerprint- and scratch-resistant patterned glass cooktop • Four hot surface indicator lights • Flush mount installation capability (except Stainless steel models)

**Note: bold = feature upgrade from previous model**



Energy-efficient pan size sensor selects a 6" or 9" element to match the pan you are using.



Flush Mount Installation creates a stunning visual effect.  
(Not available on stainless steel models)



Bridge Element for total cooking flexibility.



6"/9" Dual Element saves energy and provides more efficient cooking.



## GE Profile™

### 30" Electronic Touch Control Cooktop

**JP938BC** Black on black

• **Electronic touch controls** • **Pan presence sensor** • **Pan size sensor** • **Control lockout** • **Kitchen timer** • Four ribbon heating elements: **one 6" with warmer**, one dual (6"/9") and two 7" with connecting bridge element

**JP938SC** Stainless steel (not shown)

**JP938WC** White on white (not shown)

**JP938CC** Bisque (not shown)



## GE Profile™

### 30" CleanDesign Electric Cooktop

**JP930SC** Stainless steel

• Four ribbon heating elements: one 6", one dual (6"/9") and **two 7" with connecting bridge element**

**JP930TC** True white (not shown)

**JP930KC** True Bisque (not shown)

Available September 2001

**JP930CC** Bisque (not shown)

**JP930BC** Black on black (not shown)



## GE Profile™

### 30" CleanDesign Electric Cooktop

**JP350TC** True white

• Four ribbon heating elements: one dual (6"/9"), two 8" and one 6"  
Available September 2001

**JP350SC** Stainless steel (not shown)

**JP350WC** White on white (not shown)

**JP350KC** True Bisque (not shown)

**JP350AC** Almond on almond (not shown)

**JP350BC** Black on black (not shown)

Not all features available on all models.  
For additional features, specifications  
and color availability, refer to page 101.



## *GE Profile™ Built-In Cooktops: 30" Electric Downdraft*

***These models include*** • Smooth, frameless ceramic-glass CleanDesign cooktop • Four ribbon heating elements: one 6", one dual (6"/9") and two 7" with connecting bridge element • Four hot surface indicator lights • Powerful 400 CFM downdraft venting system • Three-speed fan • Upfront controls



### *GE Profile™ 30" Electric Downdraft Cooktop*

**JP989BD** Black on black

**JP989TD** True white (not shown)

**JP989WD** White on white (not shown)



### *GE Profile™ 30" Electric Downdraft Cooktop*

**JP989KD** True bisque

Available September 2001

## GE Profile™ Built-In Cooktops: 30" Gas Downdraft

**These models include** • Four sealed gas burners • Electronic pilotless ignition • Ceramic glass cooktop  
• Continuous deluxe cast-iron grates • Powerful 400 CFM downdraft venting system • Three-speed fan  
• Upfront controls • Dishwasher-safe grates



**GE Profile™**  
*30" Gas Downdraft Cooktop*  
**JGP989TC** True white



**GE Profile™**  
*30" Gas Downdraft Cooktop*  
**JGP989BC** Black on black  
**JGP989KC** True bisque (not shown)  
Available September 2001

## GE Profile™ Built-In Cooktops: 36" Integrated Gas Downdraft



**GE Profile™**  
*36" Gas Integrated Downdraft Cooktop*  
**JGP656WB** White on white  
• Four sealed gas burners • Tempered glass cooktop • Cast-iron grates • 350 CFM retractable downdraft venting system  
• Upfront variable speed fan control  
• JXBA56WW or JXBA56BB Downdraft Venting Kit required for installation  
• Optional JXRB57 kit for installation of blower and motor below the floor. Use optional GE accessory cover (JXBC57) for outdoor installation of blower and motor.  
**JGP656BB** Black on black (not shown)

Not all features available on all models.

For additional features, specifications and color availability, refer to page 102.

## GE Profile™ Built-In Cooktops: 36" Gas

**These models include** • Sealed burners • Electronic pilotless ignition • Continuous deluxe cast-iron grates • Five sealed gas burners • 15,000 BTU Maximum Plus burner • Two Precise Simmer burners • Dishwasher-safe grates



Precise Simmer burner keeps delicate foods like sauces and gravies at a low setting.



Maximum Plus Burner  
15,000 BTU burner heats up fast with high power for skillets, woks or large pots.



GE glass cooktops are sleek and easy to clean. The flat surface and sealed burners make cleanup a snap.



**GE Profile™**  
*36" Deep Stainless Gas Cooktop*  
**JGP963SEC** Stainless steel  
• Deep stainless cooktop



**GE Profile™**  
*36" Deep Porcelain Gas Cooktop*  
**JGP963BEC** Black on black  
• Deep porcelain cooktop  
**JGP963WEC** White on white (not shown)  
**JGP963CEC** Bisque (not shown)



**GE Profile™**  
*36" Gas on Glass Cooktop*  
**JGP962SEC** Stainless steel  
• Gas on glass cooktop  
**JGP962TEC** True white (not shown)  
**JGP962KED** True bisque (not shown)  
Available September 2001  
**JGP962BEC** Black on black (not shown)



## GE Profile™ Built-In Cooktops: 30" Gas

**These models include** • Sealed burners • Electronic pilotless ignition • Continuous deluxe cast-iron grates • Four sealed gas burners • 15,000 BTU Maximum Plus burner • Precise Simmer burner • Dishwasher-safe grates



Precise Simmer burner keeps delicate foods like sauces and gravies at a low setting.



Maximum Plus Burner 15,000 BTU burner heats up fast with high power for skillets, woks or large pots.



GE glass cooktops are sleek and easy to clean. The flat surface and sealed burners make cleanup a snap.



### GE Profile™ 30" Deep Porcelain Gas Cooktop

**JGP933WEC** White on white

• Deep porcelain cooktop

**JGP933SEC** Stainless steel (not shown)

• Deep stainless cooktop

**JGP933CEC** Bisque (not shown)

**JGP933BEC** Black on black (not shown)

### GE Profile™ 30" Gas on Glass Cooktop

**JGP932TEC** True white

• Gas on glass cooktop

### GE Profile™ 30" Gas on Glass Cooktop

**JGP932BEC** Black on black

• Gas on glass cooktop

**JGP932SEC** Stainless steel (not shown)

**JGP932KED** True bisque (not shown)

Available September 2001

# GE Profile™ Built-In Cooktops: Downdraft Electric Select-Top™ Modular

**These models include** • Infinite heat rotary controls • Powerful 400 CFM downdraft venting system • Three-speed fan • Porcelain-enameled cooktop • Both sides accept optional cooking modules • Heating element “ON” indicator light **Note: bold = feature upgrade from previous model**



**GE Profile™**  
**30" Dual Modular Cooktop**  
**JP389WV** White on white  
Shown with optional Ribbon  
module JXDR50VW and Grill  
module JXDL44N.



**GE Profile™**  
**30" Dual Modular Cooktop**  
**JP389BV** Black on black  
Shown with optional Ribbon  
module JXDR50VB.

## Optional Select-Top™ Modules (available at additional cost)



**Grill Module**  
Front and rear controlled heating element for more cooking flexibility and energy savings. One-piece grill grate and porcelain-enameled reflector pan can be removed for cleaning in sink or dishwasher.



**Griddle Accessory**  
(For use with optional grill module) Place over heating element and reflector pan from optional grill module. Griddle accessory has a non-stick coating and is self-draining.



**Ribbon Module**  
Patterned glass top with one 8" and one 6" ribbon heating element.



**Calrod® Module**  
One 8" and one 6" plug-in Calrod® heating element with removable one-piece drip bowls.

**Grill Cover (not shown)**  
Covers grill area when not in use. Available in Black on black and White on white.

Optional Modules (available at additional cost)	Models	
	JP389WV	JP389BV
Calrod® Module	JXDC44RWH	JXDC43RBL
Ribbon Module	JXDR50VW	JXDR50VB
Grill Module	JXDL44N	JXDL44N
Griddle Accessory	JXDD44R	JXDD44R
Grill Cover	JXDM3	JXDM2

Not all features available on all models.

For additional features, specifications and color availability, refer to page 102.

# GE Profile™ Built-In Cooktops: Downdraft Gas Modular



## GE Profile™

### 30" Single Modular Gas Cooktop

#### JGP389WEV White on white

- Fixed standard gas burners (right side) • Left side accepts optional cooking modules • Powerful downdraft venting • Electronic pilotless ignition • Upfront controls

Shown with optional Grill module JXGG89.

#### JGP389BEV Black on black (not shown)

## Optional Modules (available at additional cost)

### Two-burner gas module for standard burners

JXGB89W—White on white

JXGB89B—Black on black

### Gas grill module

JXGG89

### Griddle for use with optional Grill module

JXGL89

### Grill Cover

JXGC89W—White on white

JXGC89B—Black on black

## Common Cooktop Cutouts

### Common Cutouts—36" Cooktops

Dimensions (W x D)	Model #	Description
33-7/8" x 19-1/8"	JP968	CleanDesign
	JP960	CleanDesign
	JGP963—Gas	Sealed Burner
	JGP962—Gas	Sealed Burner
34-9/16" x 21"	JGP656—Gas	Sealed Burner Downdraft

### Common Cutouts—30" Cooktops

Dimensions (W x D)	Model #	Description
28-1/2" x 19-5/8"	JP938	CleanDesign
	JP930	CleanDesign
	JP350	CleanDesign
	JGP933—Gas	Sealed Burner
	JGP932—Gas	Sealed Burner
28-7/8" x 20-5/8"	JP989	Electric Downdraft
	JGP989	Gas Downdraft
	JP389—Electric	Modular Downdraft
	JGP389	Gas Modular Downdraft



## *GE Profile™ Slide-In and Drop-In Ranges*

### *The perfect fit.*

GE slide-in and drop-in ranges fit every kitchen decor and cooking style. They install almost flush with surrounding cabinetry and counters, creating a dramatic effect. Accenting the contemporary design is the sleek stainless exterior, which complements just about any color or wood finish. The performance features are equally versatile.



*GE slide-in and drop-in ranges give the effect of added space, opening up kitchens and making them more inviting.*

*Versatile features are the key ingredients to our slide-in and drop-in ranges.*



#### Bridge Element

For total cooking flexibility, the bridge element gives you the freedom to match longer gourmet pans or skillets to the heating elements. A simple switch lets you combine two burners into one large cooking area.



#### Warming Zone

The warming zone is specifically designed to keep foods warm and ready to enjoy. This is a perfect option to help you coordinate numerous dishes and serve one fantastic meal.



#### Electronic control panel

The electronic control panel is innovatively styled with soft touch pads, a digital display and sleek, easy-turn dials. Plus, it's ergonomically angled for optimal, user-friendly operation.



#### Sealed Burners

The gas burners are sealed to the cooktop to help contain spills, making cleanup quick and easy. These burners ignite electronically so you don't have to deal with troublesome pilot lights. Power capacities range from low simmer to high output.



## GE Profile™ Slide-In Ranges: 30" Electric

**These models include** • SmartSet Electronic Touch Controls • Four hot surface indicator lights • Fingerprint- and scratch-resistant patterned glass-ceramic CleanDesign cooktop • Integrated designer handle • Big ClearView™ window • Extra-large self-cleaning oven with Delay Clean option • Control lock capability • Custom built-in look with simple slide-in installation. **Note: bold = feature upgrade from previous model**



SmartSet Electronic Touch Controls are simple to understand and easy to operate. Just read and touch.



The Warming Zone is a great way to keep food warm and ready to enjoy.



Bridge Element for total cooking flexibility.



Fast and easy cleanup is made possible through our CleanDesign oven interior.



### GE Profile™ 30" Slide-In CleanDesign Convection Range

**JS966SD** Stainless steel

• Two 7" ribbon heating elements with connecting bridge element • One dual (6"/9") and one 6" ribbon heating element • **Fifth element warming zone • CleanDesign oven interior • Convection Bake • Convection Roast • Stainless steel oven door with window • Three heavy-duty racks • Halogen interior oven light • Certified Sabbath mode**

**JS966TD** True white (not shown)

**JS966WD** White on white (not shown)

**JS966KD** True bisque (not shown)

Available September 2001

**JS966BD** Black on black (not shown)



### GE Profile™ 30" Slide-In CleanDesign Convection Range

**JSP56WD** White on white

• Two 7" ribbon heating elements with connecting bridge element • One 6" and one dual (6"/9") ribbon heating element • **Convection Bake • Convection Roast • Certified Sabbath mode • Frameless glass oven door**

**JSP56CD** Bisque (not shown)

**JSP56BD** Black on black (not shown)



### GE Profile™ 30" Slide-In CleanDesign Electric Range

**JSP46CD** Bisque

• Two 8", one 6" and one dual (6"/9") ribbon heating element • **Frameless glass oven door**

**JSP46WD** White on white (not shown)

**JSP46BD** Black on black (not shown)



## GE Profile™ Slide-In Ranges: 30" Gas



Sealed Burner Design helps contain spills. Fewer drips beneath cooktop means easier cleaning.



Maximum Output Burners offer high power performance, making cooking convenient.



Precise Simmer Burner provides more temperature control with a low 700-BTU setting.

### Optional Accessory Trim Kits

Enhance the built-in look of these Slide-In Gas ranges with optional accessory trim kits.



### GE Profile™ 30" Slide-In Gas Range

**JGSP44WEY** White on white

- SmartSet Electronic Controls • Electronic pilotless ignition
- Frameless glass oven door • Interior oven light • Broiler pan with grid
- Self-cleaning oven with Delay Clean option • Sealed burners
- Standard simmer burner • Maximum output burner
- Deluxe cast grates • Sure Grip designer-style handle • Glass cooktop
- Storage drawer

**JGSP44CEY** Bisque (not shown)

Available October 2001

**JGSP44BEY** Black on black (not shown)

Models shown with required filler strip provided.

Not all features available on all models. For additional features, specifications and color availability, refer to page 103.

## GE Profile™ Drop-In Ranges: 30" Electric

**These models include** • SmartSet Electronic Touch Controls • Four hot surface indicator lights • Fingerprint- and scratch-resistant glass ceramic CleanDesign cooktop • Integrated designer handle • Big ClearView™ window • Extra-large self-cleaning oven with delay option • Control lock capability

**Note: bold = feature upgrade from previous model**



SmartSet Electronic Touch Controls are simple to understand and easy to operate. Just read and touch.



The Warming Zone is a great way to keep food warm and ready to enjoy.



Bridge Element for total cooking flexibility.



Fast and easy cleanup is made possible through our CleanDesign oven interior.



### GE Profile™ 30" Drop-In Convection Range

**JD966SD** Stainless steel

• **Two 7" ribbon heating elements with connecting bridge element** • One dual (6"/9") and one 6" ribbon heating element • **Fifth element warming zone** • **CleanDesign oven interior** • **Convection Bake** • **Convection Roast** • **Stainless steel oven door with window** • **Three heavy-duty racks** • **Halogen interior oven light** • **Certified Sabbath mode**

**JD966TD** True white (not shown)

**JD966WD** White on white (not shown)

**JD966KD** True bisque (not shown)

Available September 2001

**JD966BD** Black on black (not shown)



### GE Profile™ 30" Drop-In Electric Range

**JDP46CD** Bisque

• Two 8", one 6" and one dual (6"/9") ribbon heating element • **Frameless glass oven door with window**

**JDP46WD** White on white (not shown)

**JDP46BD** Black on black (not shown)

# GE Profile™ Drop-In Spacemaker™ Range: 27" Electric



Electronic Oven Control provides convenient cooking functions.



Calrod® Heating Elements easily unplug for removal of the one-piece drip bowls for cleaning and access to the subtop.



## GE Profile™ 27" Drop-In Electric Range

### JMP31WC White on white

- Self-cleaning oven with automatic oven door lock
- Lift-up overhanging porcelain-enameled cooktop
- One 8" and three 6" plug-in Calrod® heating elements
- Frameless glass oven door
- Big View window
- Chrome drip bowls
- Electronic clock and kitchen timer
- Auto oven shut-off
- Sure Grip designer-style handle

### Optional Backguards

White, black or almond painted finish is available at additional cost for all models.  
JX27RWH – White, JX27RBK – Black, JX27RAD – Almond



*The GE Profile™ ranges  
are extremely versatile,  
incredibly accurate.*



Spectra electric ranges present a number of

exciting possibilities. The cooktop offers

tremendous **flexibility** with a warming

option and expandable heating elements.

GE TrueTemp™ technology makes the

Spectra oven the most **accurate** available.

This technology helps keep the temperature

**uniform** throughout the oven cavity.

If it's cooking space you crave, you're in for

a big surprise! The **5.0 cu. ft.** oven

can handle an impressive quantity of food.

And six **adjustable** racks make

room for all kinds of cookware, from

roasting pans to casserole dishes.

#### **Warming option**

The warming element functions just like any other heating element, but it also can be used to keep soups, sauces and breads warm, or melt butter and chocolate.



#### **Bridge element**

GE's exclusive bridge element uses one to two elements to create larger cooking zones for cookware of all sizes.



#### **6"/9" Dual element**

The dual-ring element is a large and small element all in one. It lets you heat the area necessary for either a six- or nine-inch pan.



#### **Seamless backguard**

A smooth, seamless backguard and glass touch pads simplify cleaning. Inside, GE's CleanDesign oven interior conceals the lower heating element beneath the smooth oven floor.



*Refrigeration*

*Free-Standing Cooking Products*

*Microwave Ovens*

*Dishwashers*

*Clothes Care*



## GE Profile™ Spectra™ Electric Ranges



*The oven is self-cleaning, of course. But for most families, 80% of the cooking is done on the cooktop. You can see in a glance just how easy it is to wipe the smooth ceramic-glass cooktop clean.*

### *Ceramic-glass cooktop.*

#### *Responsive.*

What's so incredible about the Spectra range is that you don't have to go beneath the surface to find convenient features. The smooth cooktop has four ribbon elements that direct heat straight up, resulting in even, high-speed cooking. A "hot surface" indicator light lets you know when the elements are too hot to touch.

#### *Attractive yet durable.*

The way the cooktop looks is just as impressive as the way it works. It's made with a specially engineered ceramic-glass that has an amazing resistance to both stains and impact. Plus, the decorator pattern helps camouflage any smudges, so nothing detracts from the overall appearance.



*The porcelain-enameled subtop is designed with special containment wells for easy cleanup. Wires have been thoughtfully positioned under the edge of the cooktop so they never interfere with cleaning.*

### *Clean-Well™ cooktop*

#### *Exclusive design.*

The Clean-Well cooktop is yet another GE innovation. It consists of two layers, including the cooking surface and a subtop. The surface is designed to contain most spills before they reach the subtop. High rims around the Calrod® elements catch spills, and the one-piece drip bowls are easily removed.

#### *Sturdy and convenient.*

The exterior cooktop is supported by a torsion bar and dual-support rods. To access the recessed subtop, all you have to do is lift and lock the cooktop into place. It's that simple.



*True European convection capability lets you cook bigger and better than ever before.*



Spectra ranges deliver “true European convection” cooking by means of a third dual-loop heating element located in the back wall. A fan evenly circulates air throughout the oven cavity. This process delivers uniform, savory results.



#### **Superior roasting.**

Convection cooking has long been lauded by professional chefs and bakers. And it's no wonder. Roasting time is reduced, with more consistent results.



#### **Perfect baking.**

GE convection ovens also deliver exceptional baking results. They bake desserts and breads at an ideal temperature (approximately 25° lower than a conventional oven).

*A simple guide to GE's QuickSet oven controls*



#### **QuickSet IV**

- Dual Element Bake • Digital temperature display with recall • Oven Preheat light • Electronic digital clock
- Electronic reminder timer, up to 12 hours • Audible Preheat signal • 12-Hour automatic oven shut-off
- Self-clean countdown digital display, including cooldown • Auto self-clean • Automatic oven control • Delay Bake • Delay Self-Clean • Adjustable self-clean cycle time • All-touchpad control • Large digital temperature display • Variable broil



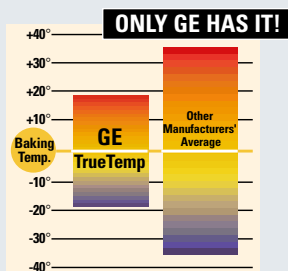
#### **QuickSet V**

- Same as QuickSet IV, plus:
- Convection bake/roast • Temperature probe • Extra-large graphics and touchpads
  - Digital glass touchpad control (0-9) entry • Oven function icons

## GE Profile™ CleanDesign: Convection

**These models include** • Super large 4.5 cu. ft. capacity oven • TrueTemp™ System • Self-cleaning convection oven with dedicated third, dual-loop heating element • Dual element bake • Six-pass power bake element • SmartLogic™ electronic control • Patterned ceramic-glass cooktop • Storage drawer • QuickSet V oven controls (see page 61) • Electronic digital clock and oven controls • Right rear 6" burner with warming option • Easy-view hot lights • One-piece upswept cooktop • Automatic self-clean oven latch • Big View window • Four leveling legs

Note: bold = feature upgrade from previous model



SmartLogic™ Electronic Control delivers more consistent oven temperatures for exceptional cooking results.



Bridge Element for total cooking flexibility.



Convection Ovens provide even cooking and superior baking.



CleanDesign oven interiors have a smooth, seamless surface, making cleanup easier than ever.

\*Among leading manufacturers' brands

Not all features available on all models. For additional features, specifications and color availability, refer to page 105.



### GE Profile Performance™ 30" Free-Standing Spectra™ Convection Range

**JB965SD** Stainless steel

Available September 2001

- CleanDesign oven interior • Two 7" ribbon heating elements with connecting bridge element • One dual 6"/9" and one 6" ribbon heating element
- Stainless steel oven door with Sure Grip handle
- Three oven shelves, one off-set • Automatic meat thermometer • Automatic oven light/pad



### GE Profile Performance™ 30" Free-Standing Spectra™ Convection Range

**JB960TB** True white

- CleanDesign oven interior • Two 7" ribbon heating elements with connecting bridge element • One dual 6"/9" and one 6" ribbon heating element
- Frameless glass oven door with Sure Grip handle
- Three oven shelves, one off-set • Automatic meat thermometer • Automatic oven light/pad
- Fluorescent night light

**JB960WB** White on white (not shown)

**JB960KD** True Bisque (not shown)

Available September 2001

**JB960BB** Black on black (not shown)



### *GE Profile Performance™*

#### *30" Free-Standing Spectra™ Convection Range*

**JB940BB** Black on black

- **CleanDesign oven interior** • One dual 6"/9", one 8", and two 6" ribbon heating elements • Frameless glass oven door with Sure Grip handle • **Three oven shelves, one off-set** • **Automatic meat thermometer** • Automatic oven light/pad • Fluorescent night light

**JB940TD** True white (not shown)

Available September 2001

**JB940WB** White on white (not shown)

**JB940KD** True bisque (not shown)

Available September 2001



### *GE Profile™*

#### *30" Free-Standing Spectra™ Convection Range*

**JBP85WB** White on white

- One dual 6"/9", one 8", and two 6" ribbon heating elements • Frameless glass oven door with Sure Grip handle • Three oven shelves • Fluorescent night light

**JBP85TD** True white (not shown)

Available September 2001

**JBP85KD** True bisque (not shown)

Available September 2001

**JBP85CB** Bisque (not shown)

**JBP85BB** Black on black (not shown)





Six-Pass Power Bake provides more power, total coverage and even cooking.



Dual Element Bake for even baking and roasting.



6 1/8" Dual Element saves energy and provides more efficient cooking.



**ONLY GE HAS IT!**

Super Large Oven Capacity has room enough for cooking an entire meal.



*GE Profile™*  
*30" Free-Standing Spectra™ Electric Range*

**JBP79WB** White on white

- Super large 5.0 cu. ft. capacity oven • TrueTemp™ System • Self-cleaning oven • Dual element bake • Six-pass power bake element • SmartLogic™ electronic control • Easy-view hot lights • Patterned ceramic-glass cooktop • One-piece upswept cooktop • Storage drawer • Electronic digital clock and oven controls • QuickSet IV oven controls (see page 63) • Glass backguard • One 8", two 6" and one dual 6"/9" ribbon heating elements • Right rear 6" burner with warming option • Frameless glass oven door with Sure Grip handle • Fluorescent cooktop light • Big View window • Automatic interior oven light • Automatic self-clean oven latch

**JBP79SD** Stainless steel (not shown)

Available September 2001

**JBP79TD** True white (not shown)

Available September 2001

**JBP79KD** True bisque (not shown)

Available September 2001

**JBP79CB** Bisque (not shown)

**JBP79AB** Almond on almond (not shown)

**JBP79BB** Black on black (not shown)

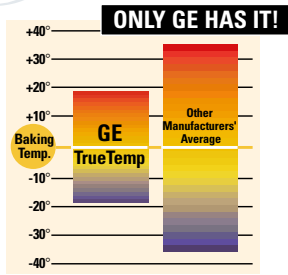
*Accessory Information*

For easy cleaning of the cooktop, GE provides one cleaning pad and one 2.5-oz. bottle of cleaning creme with each range. For additional supply, call toll-free 1-800-626-2002.

\*Among leading manufacturers' brands

Not all features available on all models.  
For additional features, specifications and color availability, refer to page 105.

# GE Profile™ QuickClean™ Self-Clean



SmartLogic™ Electronic Control delivers more consistent oven temperatures for exceptional cooking results.



Six-Pass Power Bake provides more power, total coverage and even cooking.



Super Large Oven Capacity has room enough for cooking an entire meal.



Clean-Well™ Cooktop System contains spills so cleanup is simple.



## GE Profile™ 30" Free-Standing Spectra™ Electric Range

**JBP48BB** Black on black

- TrueTemp™ System • Super large 5.0 cu. ft. capacity oven • SmartLogic™ electronic controls • Six-pass power bake element • Right rear 6" burner with warming function • Big View window • QuickSet IV oven controls (see page 63) • Sure Grip handle • Automatic interior oven light • Self-cleaning oven • Dual Element Bake • Frameless glass oven door • Designer-style handle • CleanWell™ cooktop system • Lift-up Cooktop • Plug-in Calrod® heating elements, two 8" and two 6" • Heating element "ON" indicator lights • Removable full-width storage drawer • Four leveling legs • Removable one-piece drip bowls

**JBP48WB** White on white (not shown)

**JBP48CB** Bisque (not shown)

\*Among leading manufacturers' brands

Not all features available on all models.  
For additional features, specifications  
and color availability, refer to page 105.

Refrigeration

Free-Standing Cooking Products

Microwave Ovens

Dishwashers

Clothes Care

*GE Profile™ gas ranges  
rise to the occasion,  
no matter what's on the menu.*

GE Profile gas ranges give you the room

and **power** you need to create inspired meals.

These ranges feature a **large-capacity** oven,

so you no longer have to take an a la carte

approach to cooking. They also include a

couple of **convenient** warming options

and convection capability. And you'll be

pleased to know that you can enjoy the

superior performance of gas, as well as

**easy cleanup.** Designed with

a smooth surface and continuous

**cast-iron grates,** Spectra gas

ranges offer the best of both worlds.

#### **Warming drawer**

The new warming drawer lets you prepare side dishes at your own pace. Conveniently located under the oven, this drawer keeps food warm until serving.



#### **Smooth cooktop**

This revolutionary cooktop eliminates the burner bowls and drip pans typically found on conventional gas ranges. Instead, the burners are sealed onto the cooktop, making cleanup a breeze.



#### **Warming options**

A warming zone and warming drawer save you the trouble of carefully orchestrating meals. These convenient options let you keep just about any dish warm and ready to enjoy.



#### **Convection/gas ranges—GE's first!**

These ranges utilize an innovative, two-speed convection system that works in conjunction with our TrueTemp™ system to deliver sumptuous baking and roasting results.







Refrigeration

Free-Standing Cooking Products

Microwave Ovens

Dishwashers

Clothes Care

# GE Profile™ Self-Cleaning: Sealed Burners

- These models include** • TrueTemp™ System • Warming drawer • SmartLogic™ electronic control • Extra-large self-cleaning oven
- Electronic clock and automatic oven timer • Sealed burners • Precise Simmer burner • Two Maximum Output burners • Three oven racks
  - Six embossed rack positions • In-oven broiling • Extra-large broiler pan with grid • Interior oven light • Electronic pilotless ignition
  - Automatic self-clean lock • One-piece, upswept, porcelain-enameled cooktop

**Note: bold = feature upgrade from previous model**



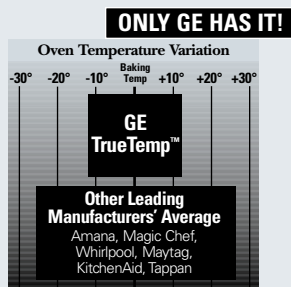
The revolutionary Smooth Cooktop—changing the way you cook with gas.



The Warming Zone is a great way to keep food warm and ready to enjoy.



Convection Gas Ovens—GE's first.



TrueTemp™ System.  
"The Most Accurate Oven in America."\*

\*Among leading manufacturers' brands.

Not all features available on all models.  
For additional features, specifications and color availability, refer to page 106.



## GE Profile Performance™ 30" Free-Standing Spectra™ Convection Gas Range with Warming Drawer

**JGB920SEC** Stainless steel

Available September 2001

- Most even baking gas convection oven • Smooth ceramic-glass cooktop with warming zone • Warming zone hot light • Scratch-resistant glass backguard
- QuickSet V glass touch oven controls with digipad entry; convection conversion; auto oven shut-off with override; start pad; delay clean option and self-clean cool down time display • Two-speed convection oven
- Convection Bake • Convection Roast • Big View window • Sure Grip handle • Designer-style control knobs • Fluorescent cooktop light • Automatic meat thermometer • Stainless steel insert included with warming drawer

**JGB920WEC** True white (not shown)

**JGB920KEC** True Bisque (not shown)

Available September 2001

**JGB920CEC** Bisque (not shown)

**JGB920BEC** Black on black (not shown)



## GE Profile Performance™ 30" Free-Standing Spectra™ Convection Gas Range with Warming Drawer

**JGB910BEC** Black on black

- Most even baking gas convection oven • QuickSet V glass touch oven controls with digipad entry; **convection conversion**; auto oven shut-off with override; start pad; delay clean option and self-clean cool down time display • Two-speed convection oven
- Convection Bake • Convection Roast • Big View window • Sure Grip handle • Designer-style control knobs • One-piece drip pans • Fluorescent cooktop light • Automatic meat thermometer • **Stainless steel insert included with warming drawer**

**JGB910SEC** Stainless steel (not shown)

Available September 2001

**JGB910WEC** White on white (not shown)

**JGB910CEC** Bisque (not shown)



### GE Profile™

30" Free-Standing Spectra™ Commercial-Style Gas Range with Warming Drawer

**JGBP90MEB** Soft stainless

- QuickSet V oven controls with digipad entry; auto oven shut-off with override; start pad; delay clean option and self-clean cool down time display
- **Soft stainless oven door with Big View window**
- Professional-style handle and control knobs
- Professional cooktop grates with rubber feet • Continuous grate surface



Sealed Burner Design helps contain spills. Fewer drips beneath cooktop means easier cleaning.



Precise Simmer Burner with 600 BTUs allows for low, even heat distribution for delicate foods and sauces.



### GE Profile™

30" Free-Standing Spectra™ Gas Range with Warming Drawer

**JGBP86WEB** White on white

- Scratch-resistant glass backguard
- QuickSet V oven controls with digipad entry; auto oven shut-off with override; start pad; delay clean option and self-clean cool down time display • Fluorescent cooktop night light • Frameless glass oven door with Big View window • Sure Grip handle
- Designer-style control knobs • **Professional, extra-large cast-iron grates • Continuous grate surface • One-piece drip pans**

**JGBP86CEB** Bisque (not shown)

**JGBP86BEB** Black on black (not shown)



Maximum Output Burners, with 12,000 BTUs, provide maximum output for fast heat-up and boiling.



## GE Profile™ Self-Cleaning: Sealed Burners (continued)

**These models include** • TrueTemp™ System • Warming drawer • SmartLogic™ electronic control • Extra-large self-cleaning oven

- Electronic clock and automatic oven timer • Sealed burners • Precise Simmer burner • Two Maximum Output burners • Three oven racks
- Six embossed rack positions • In-oven broiling • Extra-large broiler pan with grid • Interior oven light • Electronic pilotless ignition

**Note: bold = feature upgrade from previous model**



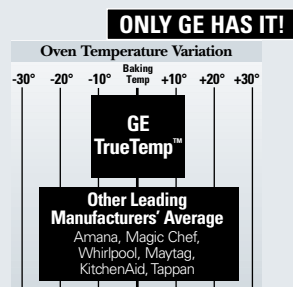
The revolutionary Smooth Cooktop—changing the way you cook with gas.



The Warming Zone is a great way to keep food warm and ready to enjoy.



Convection Gas Ovens—  
GE's first.



TrueTemp™ System.  
"The Most Accurate Oven in America."\*

\*Among leading manufacturers' brands.

Not all features available on all models.  
For additional features, specifications and color availability, refer to page 106.



### GE Profile™ 30" Free-Standing Spectra™ Gas Range with Warming Drawer

**JGBP85BEB** Black on black

- Scratch-resistant glass backguard • **QuickSet V oven controls with digipad entry; auto oven shut-off with override; start pad; delay clean option and self-clean cool down time display** • **Automatic self-clean lock**
- **Fluorescent cooktop night light** • Frameless glass oven door with Big View window • Sure Grip handle
- Designer-style control knobs • One-piece, upswept, porcelain-enameled cooktop • Square heavy-cast grates with rubber feet • One-piece drip pans

**JGBP85WEB** White on white (not shown)

**JGBP85CEB** Bisque (not shown)

**JGBP85AEB** Almond on almond (not shown)



### GE Profile™ 30" Free-Standing Spectra™ Gas Range with Warming Drawer

**JGBP79CEB** Bisque

- QuickSet IV oven controls with digital temperature display; auto oven shut-off with override; start pad; delay clean option; self-clean cool down time display and control lock capability
- Scratch-resistant porcelain-enameled backguard
- Big View window • **Sure Grip handle** • Designer-style control knobs • One-piece, upswept, porcelain-enameled cooktop • **Square heavy-cast grates with rubber feet** • One-piece drip pans

**JGBP79MEB** Soft stainless (not shown)

**JGBP79WEB** White on white (not shown)

**JGBP79BEB** Black on black (not shown)

## GE Profile™ Slide-Out Hoods

**These models include** • See-through glass visor slides in and out • 300 CFM performance with variable speed fan control • Auto heat sensor • Compact housing leaves ample shelf space behind cabinet doors • Vertical exhaust with 3-1/4" x 10" rectangular duct • Cooktop light



### GE Profile™ Slide-Out Hoods

**JV960SC** Brushed aluminum

• 36" width

**JV930SC** Brushed aluminum (not shown)

• 30" width



### GE Profile™ 36" Slide-Out Hoods

**JV696S** Bisque

**JV695S** White on white  
(not shown)

**JV694S** Black on black  
(not shown)

### 30" Slide-Out Hoods

**JV396S** Bisque (not shown)

**JV395S** White on white  
(not shown)

**JV394S** Black on black  
(not shown)

## GE Profile™ Designer Hoods

**These models include** • Four-speed fan control • Two halogen cooktop lights (20 watts each) • Night light setting • Vertical exhaust (600 CFM) • 7 sones rating • 7" round duct



### GE Profile™ Designer Hood

**JV966DSS** Stainless steel

• 36" width

**JV965DWW** White on white (not shown)

**JV965DCC** Bisque (not shown)

**JV965DBB** Black on black (not shown)



### GE Profile™ Designer Hood

**JV936DCC** Bisque

• 30" width

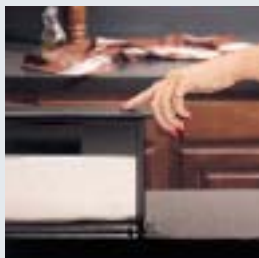
**JV935DSS** Stainless steel (not shown)

**JV935DWW** White on white (not shown)

**JV935DSS** Black on black (not shown)

## GE Profile™ Venting Options: Telescopic Downdraft Systems

**These models include** • 500-CFM performance • Variable speed fan control • Raises to 7" over cooktop surface  
• Retracts when not in use • Ideal for island or peninsula installations • 3-1/4" x 10" rectangular duct



Raise/lower vent switch provides convenience of operation.

Note: Approved for use with all GE Profile™ and GE electric and sealed burner gas cooktops. Not approved for use with standard burner gas cooktops.



### GE Profile Performance™ Telescopic Downdraft Systems

**JVB96SA** Stainless steel

• 36" width

**JVB93SA** Stainless steel (not shown)

• 30" width

**These models include** • 350-CFM performance • Upfront variable speed fan with slide control • Raises to 8-3/4" over cooktop surface  
• Retracts when not in use • Ideal for island or peninsula installations • Use optional GE accessory cover (JXBC57) for outdoor installation of blower or the indoor blower mounting kit (JXRB57) for indoor remote mounting of the blower

**Note: bold = feature upgrade from previous model**



Separate remote switch to raise/lower vent provides installation flexibility and convenience of operation. (only available on JVB67)

Note: Approved for use with all GE Profile™ and GE electric and sealed burner gas cooktops. Not approved for use with standard burner gas cooktops.



### GE Profile™ Telescopic Downdraft Systems

**JVB67AWW**

White on white

• 36" width • **Separate remote switch to raise/lower vent**

**JVB67ACC**

Bisque (not shown)

**JVB67ABB**

Black on black (not shown)



### GE Profile™ Telescopic Downdraft Systems

**JVB37ABB**

Black on black

• 30" width

**JVB37AWW**

White on white (not shown)

**JVB37ACC**

Bisque (not shown)

Not all features available on all models.  
For additional features, specifications and color availability, refer to page 108.

**Note: Cooktops Sold Separately**



# GE Profile™ High-Performance, Performance, Deluxe and Standard Hoods

**These models include** • Two halogen cooktop lights (50 watts) • Night light setting

Note: bold = feature upgrade from previous model



## GE Profile™ High-Performance Hood

**JV666C** Stainless steel

- 36" width • Three speed fan plus boost • Vertical or rear exhaust (350/400 CFM) • 3-1/4" x 10" rectangular duct (convertible to 7" round duct)
- Silverstone underside coating

**JV665C** White on white or Black on black (not shown)



## GE Profile™ High-Performance Hood

**JV635C** White on white (shown) or Black on black

- 30" width • **Three speed fan control plus boost**
- **Vertical or rear exhaust (350/400 CFM)**
- 3-1/4" x 10" rectangular duct (convertible to 7" round duct)

**JV636C** Stainless steel (not shown)



## GE Profile™ Performance Hoods

**JV565C** White on white (shown), Bisque or Black on black

- 36" width • Two speed fan control • 200 CFM (max.) • Convertible exhaust options (7" round, rectangular or non-vented) • Rectangular damper and 7" round adapter included

**JV566C** Stainless steel (not shown)

**JV535C** White on white, Bisque, or Black on black (not shown)

- 30" width

**JV536C** Stainless steel (not shown)

JXDA23 round damper accessory, available at additional cost (Models JV666/665/636/635/566/565/536/535).

Optional charcoal filter accessory available.

Not all features available on all models.

For additional features, specifications and color availability, refer to page 108.

## The Original Spacemaker®

Since its introduction in 1979, the GE Spacemaker

award-winning microwave oven has been

an indispensable part of the American kitchen.

Today, its role is **bigger** than ever.

Completely redesigned with **roomy** interiors,

our Spacemaker microwaves hold up to

six full-sized plates of food. They're not

only larger — they're **better**.

Quick Defrost and convection

capabilities make Spacemaker

microwaves **ideal** second ovens.

And our new XL1800 microwaves

feature built-in vortex venting,

as well as **brighter** halogen

interior and halogen cooktop lighting.

### Quick Defrost

Quick Defrost lets you thaw a pound of ground beef up to 50% faster than our previous models.

What used to take 6-1/2 minutes now defrosts in just three minutes.



### Six-plate capacity

With its two cooking racks and 14-1/4" recessed turntable, the Spacemaker microwave oven (JVM1860) holds up to six dinner plates or three 9" x13" casserole dishes.



### GE innovation, space-saving design

With so many features and over 20 years' experience it is easy to see why people are making GE Spacemaker their microwave of choice. Ideal as a second oven, these microwaves complete your cooking center.



Before



After



Refrigeration

Cooking Products

Microwave Ovens

Dishwashers

Clothes Care

Spacemaker microwave oven



# GE Profile Spacemaker® Ovens with Convection/Microwave Cooking

**These models include** • Combination Convection/Microwave Cooking • Sensor Cooking (Chicken, Fish, Potato) • One Touch Sensor Cooking Controls for Popcorn, Beverage, Reheat • Multiple Combination Cooking Levels • Stainless Steel Interior • Auto and Time Defrost • Convection Rack • Programmable Night Light **Note: bold = feature upgrade from previous model**



The JVM1490 preheats faster than ever before with advanced cooking technology.



Convection cooking combined with microwave power (Fast Bake), for cooking results up to 25% faster than conventional ovens.



Convection Cooking (Bake) provides a browned crisp exterior and moist interior.



## GE Profile™ Spacemaker Oven

**JVM1490SD** Stainless steel

- 1.4 cu. ft. cavity • 900 Watts\* • Fast Bake • Bake • Fast Defrost • Halogen Interior Lighting
- Halogen Cooktop Lighting • Two-Line Scrolling Display • Turntable • Powerful Two-Speed 300 CFM Venting • Bilingual Display (English/Spanish)



**JVM1490WD** White on white (not shown)

**JVM1490CD** Bisque (not shown)

**JVM1490BD** Black on black (not shown)



## GE Profile™ Spacemaker Oven

**JVM1190WY** White on white

- 1.1 cu. ft. cavity • 825 Watts\* • Combination Bake Hi/Lo
- Convection Broil • SmartControl System with Interactive Display



**JVM1190SY** Stainless steel (not shown)

**JVM1190BY** Black on black (not shown)

\*IEC-705 Test Procedure

Not all features available on all models.  
For additional features, specifications and color availability, refer to page 109.

## GE Profile™ Wall Oven with Convection/Microwave Cooking



Convection cooking produces golden brown exteriors and moist interiors.



Shown in 30" width

**GE Profile™**  
30" or 27" Convection/Microwave Wall Oven

**JEB1095SB** Stainless steel

• 1.0 cu. ft. cavity • 800 Watts\* • Convection Cooking • Combination Roast (probe) • Combination Cooking • Sensor Cooking Controls for Popcorn, Reheat, Beverage and Cook Pads • Express Cook

**JEB1095WB** White on white (not shown)

**JEB1095CB** Bisque\*\*

**JEB1095BB** Black on black (not shown)

\*\*Available August 2001

Convection/Microwave Wall Ovens provide a true built-in appearance. JEB1095 will fit a 27" or 30" cutout. A trim kit (included with all models) enables the unit to be adapted to a 30" width. Available in stainless steel, classic white and black.

## GE Profile 36" Spacemaker® Microwave Oven with Sensor Cooking



One Touch Sensor Controls automatically eliminate guesswork.



**GE Profile™**  
36" Spacemaker

**JVM3660SD** Stainless steel

• 1.8 cu. ft. cavity • 1000 Watts\* • 36" Width Application • One Touch Sensor Controls for Popcorn, Beverage, Vegetables, Potato, Ground Meat, Fish, Chicken Pieces and Reheat • Hidden Vent for sleek appearance • Large 14-1/4" Recessed Turntable • Turntable On/Off • Help Pad • Timer On/Off • Bright View Interior with Halogen Lamp • Halogen Cooktop Lighting • Auto Night Light • Time Cook I & II • Auto, Time and Quick Defrost • Add 30 Seconds • Instant On Controls • Beeper Volume Control • Bilingual Display (English/Spanish) • Two-Line Scrolling Display • Child Lockout • Powerful Three-Speed Plus Boost 300 CFM 36" Venting • Removable Cooking Rack • Easy Mount Installation

**JVM3660BD**

Black on black  
(control panel shown)

**JVM3660WD**

White on white  
(not shown)

**JVM3660CD**

Bisque (not shown)



\*IEC-705 Test Procedure

Not all features available on all models.  
For additional features, specifications and color availability, refer to pages 109-110.



## GE Profile Spacemaker® XL1800 Microwave Oven with Sensor Cooking



Six-Plate Capacity with two cooking racks and 14-1/4" recessed turntable, holds up to six dinner plates or three 9" x 13" casserole dishes.



Quick Defrost lets you thaw a pound of ground beef up to 50% faster than our previous models.



### GE Profile™ Spacemaker XL1800

#### JVM1860BD Black on black

- 1.8 cu. ft. cavity • 1000 Watts\* • Large 14-1/4" Recessed Turntable • One Touch Sensor Cooking Controls for Popcorn, Beverage, Vegetables, Potato, Ground Meat, Fish, Chicken Pieces and Reheat • Express Cook • Auto, Time and Quick Defrost • Instant On Controls • Bilingual Display (English/Spanish) • Two-Line Scrolling Display • Big View Window • Powerful Three-Speed plus Boost 300 CFM Vortex Venting • Easy Mount Installation • Turntable On/Off • Hidden Vent for sleek appearance • Help Pad • Delay Start • Reminder • Timer On/Off • Auto Night Light • Time Cook I & II • Add 30 Seconds • Beeper Volume Control • Child Lockout • Bright View Interior with Halogen Lamp • Halogen Cooktop Lighting • Two racks—6 dinner plate capacity



#### JVM1860WD

White on white  
(control panel shown)

#### JVM1860SD

Stainless steel (not shown)

#### JVM1860CD

Bisque (not shown)

## GE Profile™ Countertop Microwave/Convection Oven



Convection Cooking produces flavorful and beautifully browned food.



Model shown with trim kit\*\*

### GE Profile™ Countertop Convection/Microwave Oven

#### JE1590SC Stainless steel

- 1.5 cu. ft. oven cavity • 1000 Watts\* • Convection Mode • Combination Cooking Mode • Tactile Switches and Dial • Two-Line Scrolling Display • Sensor Cooking Controls for Popcorn, Beverage, Reheat and Cook • Auto/Time Defrost • Instant On Controls • Express Cook 1-6 • Child Lockout • Cooking Complete Reminder • Timer On/Off • Glass turntable • Optional trim kit available\*\*



#### JE1590WC

White on white (not shown)

#### JE1590CC

Bisque (not shown)

#### JE1590BC

Black on black (not shown)

\*IEC-705 Test Procedure

Not all features available on all models.  
For additional features, specifications and color availability, refer to page 110.



# GE Profile™ Countertop Microwave Ovens with Sensor Cooking

**These models include** • Scrolling Display • Sensor Cooking Controls for Popcorn, Beverage, Reheat, Vegetable, Potato and Chicken/Fish • Time Cook I & II • Auto Defrost/Time Defrost • Express Cook • Add 30 Seconds • 10 power levels • Instant On Controls • Timer On/Off • Child Lockout • Delay Start • Reminder • Cooking Complete Reminder • Variable Beeper Volume

**Note: bold = feature upgrade from previous model**



Combination Cooking combines microwave and convection cooking.



Sensor Controls take the guesswork out of cooking.



Model shown with trim kit\*\*



## GE Profile™

### Sensor Countertop

**JE1860SB** Stainless steel  
• **Extra-large 1.8 cu. ft. cavity**  
• 1100 Watts\* • **Turntable On/Off** • **Optional trim kit available\*\***

### **JE1860WB**

White on white (not shown)

### **JE1860CB**

Bisque (not shown)

### **JE1860GB**

Black with greystone case (not shown)



## GE Profile™

### Sensor Countertop

**JE1660WB** White on white  
• **Full-size 1.6 cu. ft. cavity**  
• 1100 Watts\* • Turntable  
• **Optional trim kit available\*\***

### **JE1660GB**

Black with greystone case (not shown)

\*IEC-705 Test Procedure

\*\*Optional Trim Kit—Custom Trim kits available in both 27" and 30" configurations at an additional cost. See page 118 for more information.

Not all features available on all models. For additional features, specifications and color availability, refer to pages 110-111.

Available through August 2001

Refrigeration

Cooking Products

Microwave Ovens

Dishwashers

Clothes Care

## GE Profile™ Countertop Microwave Ovens with Sensor Cooking (continued)

**These models include** • Scrolling Display • Sensor Cooking Controls for Popcorn, Beverage, Reheat, Vegetable, Potato and Chicken/Fish Pads • Time Cook I & II • Auto Defrost/Time Defrost • Express Cook • Add 30 Seconds • 10 power levels • Instant On Controls • Timer On/Off • Child Lockout • Delay Start • Reminder • Cooking Complete Reminder • Variable Beeper Volume

**Note: bold = feature upgrade from previous model**



Sensor Controls take the guesswork out of cooking.



The Scrolling Display is easy to read and a helpful cooking guide.



The versatility of a GE countertop microwave fits any consumer's needs. The ability to build into a wall frees up valuable counter space.



**GE Profile™**  
*Sensor Countertop*

**JE1360BC** Black on black

• Family-size 1.3 cu. ft. cavity • 1100 Watts\* • Turntable



**JE1360WC**

White on white (not shown)



**GE Profile™**  
*Sensor Countertop*

**JE1160WC** White on white

• Mid-size 1.1 cu. ft. cavity • 1100 Watts\* • Turntable



**JE1160BC**

Black on black (not shown)



**GE Profile™**  
*Sensor Countertop*

**JEM31WA** White on white

• Mid-size .9 cu. ft. cavity • 800 Watts\* • Optional trim kit available\*\*  
• Optional undercabinet mounting kit available†



**JEM31SA**

Stainless steel (not shown)

**JEM31CA**

Bisque (not shown)

**JEM31GA**

Black with greystone case (not shown)

\*IEC-705 Test Procedure

\*\*Optional Trim Kit—Custom Trim kits available in both 27" and 30" configurations at an additional cost. See page 118 for more information.

†Undercabinet mounting kit—Noted microwave ovens can easily be mounted below your cabinetry, freeing up valuable counter space. A mounting template provides all the necessary measurements for installation on practically any wood or metal cabinets.

Not all features available on all models. For additional features, specifications and color availability, refer to pages 111-112.

## Countertop Microwave Optional Oven Trim Kits



### 30" Deluxe Trim Kit For 1.8 Cu. Ft. Microwave Ovens

This trim kit allows for built-in installation of the 1.8 countertop microwave oven in a wall or cabinet alone, or over a GE 30" single electric wall oven as shown.

#### 30" Deluxe Trim Kits for Model JE1860

JX1830SB—Stainless Steel, JX1830WB—White, JX1830CB—Bisque, JX1830BB—Black

### 27" Deluxe Trim Kit For 1.8 Cu. Ft. Microwave Ovens (not shown)

The 27" deluxe trim kit allows a 1.8 countertop microwave oven to be built into a wall or cabinet alone, or over a GE 27" single electric wall oven for a complete one-piece built-in integrated appearance.

#### 27" Deluxe Trim Kits for Model JE1860

JX1827SB—Stainless Steel, JX1827WB—White, JX1827CB—Bisque, JX1827BB—Black



### 30" Deluxe Trim Kit For 1.6 Cu. Ft. Microwave Ovens

This trim kit allows for built-in installation of the 1.6 countertop microwave oven in a wall or cabinet alone, or over a GE 30" single electric wall oven as shown.

#### 30" Deluxe Trim Kits for Model JE1660

JX1530MWW—White, JX1530MBW—Black

### 27" Deluxe Trim Kit For 1.6 Cu. Ft. Microwave Ovens (not shown)

The 27" deluxe trim kit allows a 1.6 countertop microwave oven to be built into a wall or cabinet alone, or over a GE 27" single electric wall oven for a complete one-piece built-in integrated appearance.

#### 27" Deluxe Trim Kits for Model JE1660

JX1527MWW—White, JX1527MBW—Black



### Deluxe Trim Kits For 1.5 Cu. Ft. GE Profile™ Microwave Ovens

Built-in trim kits allow installation in a wall, cabinet alone, or over a GE 30" or 27" single electric wall oven. Use a convection wall oven under these convection microwave ovens for a complete convection cooking center.

#### 30" Deluxe Trim Kits for Model JE1590

JX1530CSC—Stainless, JX1530CWC—White,  
JX1530CCC—Bisque, JX1530CBC—Black

#### 27" Deluxe Trim Kits for Model JE1590

JX1527CSC—Stainless, JX1527CWC—White,  
JX1527CCC—Bisque, JX1527CBC—Black



### Built-In Trim Kit For .9 Cu. Ft. Microwave Ovens

For a custom built-in appearance, this kit allows built-in installation of the Spacemaker II™ microwave oven into a wall or cabinet alone.

#### Trim Kits for Model JEM31

JX827SS—Stainless Steel Trim Kits  
JX827WN—White Trim Kits  
JX827BN—Black Trim Kits  
JX827CD—Bisque Trim Kits



### Hanging Kit For .9 Cu. Ft. Microwave Ovens

This hanging kit allows installation under a cabinet.

#### Hanging Kit for Model JEM31

Pub. No. 4-A019



*The look of the year.  
The performance of a lifetime.*



Now there's a dishwasher that will appeal to connoisseurs of fine art and fine dining. The elegant,

high-performance GE Profile™ dishwasher has a look

unlike any other, with a gracefully contoured

door and smooth, inlaid electronic controls.

As strong on performance as it is on looks,

it features the advanced ExtraClean™

wash system, ExtraFine™ filter and ExtraClean™

sensor with Automatic temperature

control to get dishes incredibly clean.

The Tall-Over-Tall™ rack design and spacious interior provide room for even

the most entertaining lifestyles. And it's so

quiet, it's easy to forget how hard it's working.

The true beauty of the GE Profile dishwasher

is that its style and performance will get

noticed—its quiet operation won't.

#### **The leading edge of kitchen design**

GE Profile has created the only dishwasher with a full-length contoured door, as well as the industry's only full wrap stainless steel door. Inlaid light-touch controls provide a smooth, seamless appearance.



#### **Our dishwasher is very accommodating**

With room for up to 16 place settings, the GE Profile dishwasher's Tall-Over-Tall towerless rack design provides additional room for dishes, as well as tall items.



#### **Engineered for quiet**

The GE Profile dishwasher is designed to be quiet. Thinstall™ insulation and mastic cushion the dishwasher, while the ActiveVent II system seals in sound during the wash.



#### **Premium performance, clean and simple**

The ExtraClean wash system has three direct-feed wash arms for 100% coverage. The self-cleaning ExtraFine filter removes food particles smaller than 1/100th of an inch.





Refrigeration

Advantium Cooking

Microwave Ovens

Dishwashers

Clothes Care





## GE Profile™ Built-In Dishwashers

**These models include** • Energy Star® qualified • ExtraClean™ wash system • ExtraFine™ filter • ExtraClean™ sensor • Automatic temperature control • Inlaid light-touch electronic controls • Squeeze latch • Last cycle memory • NSF Certified Anti-bacteria cycle • Cookware cycle • China/Crystal cycle • SpeedCycle™ selection • Added heat enhancement • Automatic HotStart™ feature • QuietPower™ IV sound insulation package • QuietPower™ motor • Thinstall™ insulation and mastic • ActiveVent II system • Tall-Over-Tall™ nylon rack system with ball tines • Super capacity 3-piece modular silverware basket • Child lock-out • Trimless • Multi-wattage heating element

**Note: bold = feature upgrade from previous model**

**ONLY GE HAS IT!**



Tall-Over-Tall™ Towerless Rack design accommodates tall items like 9-1/4" glasses in the upper rack and a 20-quart stock pot in the lower rack—no adjustment required.

**ONLY GE HAS IT!**



The ExtraClean™ Sensor design continually monitors every cycle and adjusts for water soil content, water temperature, wash cycle length and the amount of water needed to clean dishes efficiently.



The ExtraClean™ Wash System has three direct-feed wash arms to clean every spot on every dish.

**ONLY GE HAS IT!**



The ExtraFine™ Helix Flow Filter removes food particles smaller than 1/100th of an inch.



### GE Profile™ Built-In Dishwasher

**PDW7880GSS** Stainless steel exterior

• Contoured door • **Stainless steel full wrap door** • Countdown display with six status lights • 12 touchpads • 1-9 hour Delay start • Glasses cycle • Two sets fold-down tines and two sets multi-position fold-down tines in upper rack • Four sets fold-down tines in lower rack • Four utility shelves with StemSafe™ system • ExtraShelf



As an ENERGY STAR® partner, GE has determined that this product meets the ENERGY STAR® guidelines for energy efficiency.



### GE Profile™ Built-In Dishwasher

**PDW7800GBB** Black on black

• Contoured door • Countdown display with six status lights • 12 touchpads • 1-9 hour Delay start • Glasses cycle • Two sets fold-down tines and two sets multi-position fold-down tines in upper rack • Four sets fold-down tines in lower rack • Four utility shelves with StemSafe™ system • ExtraShelf

**PDW7800GWW** White on white (not shown)

**PDW7800GCC** Bisque (not shown)



As an ENERGY STAR® partner, GE has determined that this product meets the ENERGY STAR® guidelines for energy efficiency.

For additional features, specifications and color availability, refer to page 113.





**GE Profile™**  
*Built-In Dishwasher*

**PDW7700GWW** White on white

- Long door-flat • CustomStyle™ panel trim kit available • Countdown display with six status lights
- 12 touchpads • 1-9 hour Delay start • Glasses cycle
- Two sets fold-down tines and two sets multi-position fold-down tines in upper rack • Four sets fold-down tines in lower rack • Four utility shelves with StemSafe™ system • ExtraShelf

**PDW7700GBB** Black on black (not shown)

**PDW7700GCC** Bisque (not shown)



As an ENERGY STAR® partner, GE has determined that this product meets the ENERGY STAR® guidelines for energy efficiency.



**GE Profile™**  
*Built-In Dishwasher*

**PDW7300GCC** Bisque

- Contoured door • Six status lights • 11 touchpads
- 2/4/8-hour Delay start • One set fold-down tines and one set multi-position fold-down tines in upper rack • Two sets fold-down tines in lower rack
- Two utility shelves with StemSafe™ system

**PDW7300GWW** White on white (not shown)

**PDW7300GBB** Black on black (not shown)



As an ENERGY STAR® partner, GE has determined that this product meets the ENERGY STAR® guidelines for energy efficiency.



*All models available September, 2001.*

*Outstanding  
cleaning performance.*



GE laundry systems offer exceptional

clothes care with a number of highly advanced

features. Our innovative Adaptive Logic System™

the brains behind the GE Profile Wizard™ washer

and dryer, automatically adjusts cycle times

to deliver immaculate results. It does

the thinking for you so you don't have to.

But that's just the beginning. PerfectTemp

maximizes detergent's effectiveness,

while minimizing shrinking, fading and

wrinkling. Sensor Dry prevents overdrying

and underdrying, extending the life

of clothes. And convenient

electronic controls provide accurate

cycle countdown, from start to finish.

#### **Speed Wash and Dry**

Our Speed Wash/Dry system washes and dries a soccer uniform, school uniform or golf outfit in 30 minutes or less. This is about 50% faster than other speed wash/dry systems on the market.



#### **Stain removal**

The Stain Wash option eliminates or reduces the need for pretreating.

With scrubbing action and concentrated soaking, this option saves you time and frustration. And it can be used on any fabric, any cycle.



**ONLY GE HAS IT!**

#### **Balanced loads**

Our exclusive Auto Balance Suspension System automatically redistributes heavy and uneven loads, allowing the washer to maintain full spin speed without walking.



*Before PerfectTemp*

*After PerfectTemp*

#### **Perfect wash temperatures**

Our PerfectTemp wash system regulates water temperature to maximize detergents effectiveness while minimizing shrinking, fading and wrinkling.





Refrigeration

Cooking Products

Microwave Ovens

Dishwashers

Clothes Care



## *Introducing a new definition of clean.*

*The Wizard has a marvelous way with laundry. It not only gets clothes clean—it makes life easier.*

The new Wizard washer and dryer work wonders. Engineered with the innovative Adaptive Logic System™, Wizard does the thinking so you don't have to. For each load, this system optimizes cycle time by taking into account such household variables as the water heater temperature setting and the length of dryer ducts. It learns and adjusts washer and dryer cycle times based on load sizes and fabric types. The more the Adaptive Logic System learns about your household and your laundry, the more accurate it becomes. Imagine a washer that doesn't leave soapy residue and a dryer that dries clothes evenly. Adaptive Logic senses what needs to be done and does it with amazing accuracy—all you have to do is press a button. That's the magic of the Wizard.



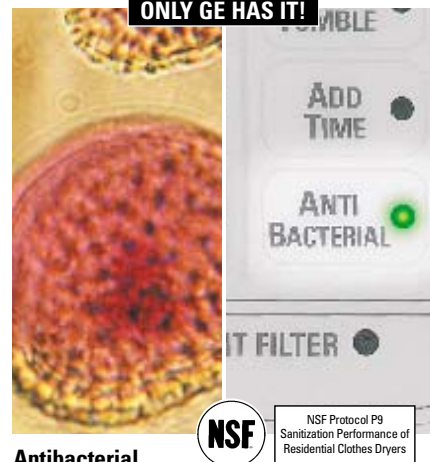
### **Stain Wash**

Stain Wash eliminates or reduces the need for pretreating, alternating soak and agitation. It can be used on any fabric, any cycle.



### **Speed Wash and Speed Dry**

When you need it quick...washes and dries a soccer uniform, school uniform or golf outfit...about 50% faster than the other Speed Wash/Speed Dry Systems on the market.



### **Antibacterial**

#### **Dryer Option**

Reduces 99.9% of certain types of bacteria, including *Staphylococcus aureus*, *Pseudomonas aeruginosa*, and *Klebsiella pneumoniae*, NSF certified. A GE exclusive.



### **Adaptive Logic System™**

Adaptive Logic is amazingly accurate. From fill to finish, this system automatically adjusts cycle times according to household conditions, like the length of dryer ducts and the distance of the washer from the water heater, giving you an accurate cycle time.



*Backed by the longest,  
strongest full warranty  
in the industry.*

*A GE Exclusive.*



### *GE Profile™*

*Super 3.2 cu. ft. Capacity Plus Washer*

#### **WPSE7003A**

- One-Touch operation • Adaptive Logic System™ • Precision Care Wash System • 3.2 Super Capacity Plus • PerfecTemp Plus • Stain Wash cycle
- Multiple cycle selections • 5 speed combinations • Speed Wash
- Custom cycles • Extended soak/presoak • Extended spin • Second rinse
- End-of-cycle signal • Lifetime basket warranty • Delay Start (1-8 hour)
- Hush Quiet Plus • Digital countdown • SpotSpray • Full ten-year warranty



### *GE Profile™*

*Super 7.0 Cu. Ft. Capacity Dryer*

#### **DPSE592EA/DPSE592GA**

- One-Touch operation • Adaptive Logic System™ • Sensor Dry Plus
- Antibacterial option • Speed Dry • Wrinkle Care Extended Tumble
- 5 heat selections • Custom cycles • Hush Quiet Plus • Interior drum light • Deluxe dryer rack • Deluxe end-of-cycle signal • Dryel® cycle
- Dewrinkle cycle • Full ten-year warranty



*Look for new Profile™ models available Spring 2002.*

## *GE Profile™ Front-Loading Washer and Dryer*



*Stack Installation  
WPXH214A shown with DPXH46EA/DPXH46GA  
(stacking kit included with dryer)*

### *The solution to a tight situation.*

The GE stackable washer and dryer pair has a unique configuration that eases its way into any situation, whether it's a hallway or a closet. And wherever it is—out of the way or out of sight—this laundry pair gives you the capacity you need to finish the laundry in minimal time.



*Built-In Installation  
WPXH214A shown with DPXH46EA/DPXH46GA*



## Washer Features



**Automatic Water Fill** eliminates guesswork and water waste. Automatically adjusts to the load type by adding water. Water fill level remains below the door.



**Automatic Dispenser** automatically dispenses detergent, bleach and fabric softener at just the right time in the wash cycle.

## Dryer Feature



### Dryer Rack

The sturdy Dryer Rack is designed to dry items such as washable sneakers and stuffed animals, and is easy to insert and remove.



### GE Profile™ Front-Loading Washer

#### WPXH214A Energy Star Model



As an ENERGY STAR® partner, GE has determined that this product meets the ENERGY STAR® guidelines for energy efficiency.

- Extra-Large 2.7 cu. ft. capacity • High-efficiency washer • 14 wash cycles
- 7 wash/rinse temperatures • Automatic water level adjustment • Extra-Rinse Cycle/Auto Option • AutoTemp • Quick Wash • ColorLogic™ 2000 • Adjustable final spin speed • Fabric softener dispenser • Bleach dispenser • Fixed end-of-cycle signal • Deluxe Quiet • Energy Star • Available in White on white and Bisque



### GE Profile™ Front-Loading Dryer

#### DPXH46EA/GA

- Extra-Large 5.7 cu. ft. capacity • Tumble drying • Moisture Sensor • Time Dry cycle
- 3 Auto Dry cycles • 4 temperature options • 2 Wrinkle Care cycles • Dryer rack
- Fixed end-of-cycle signal • Reverse-A-Door • ColorLogic™ 2000 • Available in White on white and Bisque



# Arctica™ Side-By-Side Refrigerators

	GE Profile™									
	PSS29NHM	PSS29NGM	PSS29MGM	PSS27SHM PSS27SGM	PSS27NHM	PSS27NGM	PSS27MGM	PSS25SGM	PSS25NGM	PSS25MGM
Stainless steel model				●				●		
<b>Capacity</b>										
Total (cu. ft.)	28.7	28.6	28.7	26.8 / 26.6	26.8	26.6	26.7	25.3	25.3	25.4
Fresh food (cu. ft.)	17.92	17.85	17.85	16.77 / 16.60	16.77	16.60	16.60	15.90	15.90	15.90
Freezer (cu. ft.)	10.78	10.78	10.89	10.01	10.01	10.01	10.12	9.37	9.37	9.48
Shelf area (sq. ft.)	24.1	25.0	25.1	23.5 / 23.9	23.5	23.9	24.3	23.7	23.7	23.8
<b>Fresh Food Features</b>										
Refreshment Center	●			● / -	●					
ClimateKeeper™ System	●	●	●	●	●	●	●	●	●	●
Air tower	●	●	●	●	●	●	●	●	●	●
Upfront electronic digital display	●	●		●	●	●	●	●	●	
Upfront electronic touch temp. controls	●	●	●	●	●	●	●	●	●	●
Electronic sensors	●	●	●	●	●	●	●	●	●	●
SmartWater™ Filtration System	Plus	Plus	Plus	Plus	Plus	Plus	Plus	Plus	Plus	Plus
LightTouch! Dispenser	Crushed Ice, Cubes, Water	Crushed Ice, Cubes, Water	Crushed Ice, Cubes, Water	Crushed Ice, Cubes, Water	Crushed Ice, Cubes, Water	Crushed Ice, Cubes, Water	Crushed Ice, Cubes, Water	Crushed Ice, Cubes, Water	Crushed Ice, Cubes, Water	Crushed Ice, Cubes, Water
Light	●	●	●	●	●	●	●	●	●	●
Child lock	●	●	●	●	●	●	●	●	●	●
Door alarm	●	●	●	●	●	●	●	●	●	●
Quick Ice™ feature	●	●	●	●	●	●	●	●	●	●
Water filter indicator light	●	●	●	●	●	●	●	●	●	●
Cabinet shelves	3 Glass	3 Glass	3 Glass	3 Glass	3 Glass	3 Glass	3 Glass	3 Glass	3 Glass	3 Glass
Adjustable	3	3	3	3	3	3	3	3	3	3
Slide-out, spill-proof	2	2	2	2	2	2	2	2	2	2
QuickSpace™ shelf	●	●	●	●	●	●	●	●	●	●
Integrated shelf system	●	●	●	●	●	●	●	●	●	●
Snuggler™ clip(s)	2	2	2	2	2	2	2	2	2	2
Del! pan	Adj. Temp.	Adj. Temp.	Adj. Temp.	Adj. Temp.	Adj. Temp.	Adj. Temp.	Adj. Temp.	Adj. Temp.	Adj. Temp.	Adj. Temp.
Vegetable/fruit crisper	Adj. Humid.	Adj. Humid.	Adj. Humid.	Adj. Humid.	Adj. Humid.	Adj. Humid.	Adj. Humid.	Adj. Humid.	Adj. Humid.	Adj. Humid.
Snack pan	Sealed	Sealed	Sealed	Sealed	Sealed	Sealed	Sealed	Sealed	Sealed	Sealed
CustomCool™ technology	●	●		●	●	●		●	●	
ClearLook™ modular door bins	3 (1 Adj.)	4 (3 Adj.)	4 (3 Adj.)	3 (1 Adj.) 4 (3 Adj.)	3 (1 Adj.)	4 (3 Adj.)	4 (3 Adj.)	4 (3 Adj.)	4 (3 Adj.)	4 (3 Adj.)
Dairy compartment (removable) (butter dish)	Clear	Clear	Clear	Clear	Clear	Clear	Clear	Clear	Clear	Clear
Can storage rack	●			● / -	●					
Beverage rack	●	●	●	●	●	●	●	●	●	●
Egg bin (clear)	●	●	●	●	●	●	●	●	●	●
Interior light system	Tri-level	Tri-level	Dual-level	Tri-level	Tri-level	Tri-level	Dual-level	Tri-level	Tri-level	Dual-level
Quiet Package – Quiet Design	Premium	Premium	Premium	Premium	Premium	Premium	Premium	Premium	Premium	Premium
Automatic moisture control	●	●	●	●	●	●	●	●	●	●
NeverClean™ condenser	●	●	●	●	●	●	●	●	●	●
Energy Star								●	●	●
<b>Freezer Features</b>										
FrostGuard™ technology	●	●	●	●	●	●	●	●	●	●
Auto. factory-installed icemaker & bin	●	●	●	●	●	●	●	●	●	●
Slide-out baskets	3 (2 full-ext.)	3 (2 full-ext.)	3	3 (2 full-ext.)	3 (2 full-ext.)	3 (2 full-ext.)	3	3 (2 full-ext.)	3 (2 full-ext.)	3
Wire cabinet shelves	2 (1 slide-out)	2 (1 slide-out)	2 (1 slide-out)	2 (1 slide-out)	2 (1 slide-out)	2 (1 slide-out)	2 (1 slide-out)	2 (1 slide-out)	2 (1 slide-out)	2 (1 slide-out)
Wire tilt-out door bin(s)	3 (2 Adj.)	3 (2 Adj.)	3 (2 Adj.)	3 (2 Adj.)	3 (2 Adj.)	3 (2 Adj.)	3 (2 Adj.)	3 (2 Adj.)	3 (2 Adj.)	3 (2 Adj.)
Fixed door bin(s)	1	1	1	1	1	1	1	1	1	1
Interior light	●	●	●	●	●	●	●	●	●	●
<b>Exterior</b>										
Color(s) available*	WW, CC, BB	WW, CC, BB	WW, CC, BB	BS	WW, CC, BB	WW, CC, BB	WW, CC, BB	BS	WW, CC, BB	WW, CC, BB
Door handle(s)	Color-Matched Contoured Profile	Color-Matched Contoured Profile	Color-Matched Contoured Profile	Black Contoured Profile	Color-Matched Contoured Profile	Color-Matched Contoured Profile	Color-Matched Contoured Profile	Black Contoured Profile	Color-Matched Contoured Profile	Color-Matched Contoured Profile
Exterior design	Contoured	Contoured	Contoured	Contoured	Contoured	Contoured	Contoured	Contoured	Contoured	Contoured
Textured steel door and case	●	●	●	Case only	●	●	●	Case only	●	●
Adjustable rollers	Front	Front	Front	Front	Front	Front	Front	Front	Front	Front
<b>Weights &amp; Dimensions</b>										
Height to top of hinge (in.)	69-1/4	69-1/4	69-1/4	69-1/4	69-1/4	69-1/4	69-1/4	69-1/4	69-1/4	69-1/4
Height to top of case (in.)	68-3/4	68-3/4	68-3/4	68-3/4	68-3/4	68-3/4	68-3/4	68-3/4	68-3/4	68-3/4
Case depth without door (in.)	28	28	28	28	28	28	28	28	28	28
Case depth less door handle (in.)	33-9/16	33-9/16	33-9/16	32-1/4	32-1/4	32-1/4	32-1/4	32-1/4	32-1/4	32-1/4
Case depth with door handle (in.)	36	36	36	34-11/16	34-11/16	34-11/16	34-11/16	34-11/16	34-11/16	34-11/16
Depth w/fresh food door open 90° (in.)	49-11/16	49-11/16	49-11/16	50-1/16	50-1/16	50-1/16	50-1/16	50-1/16	50-1/16	50-1/16
Width (in.)	35-3/4	35-3/4	35-3/4	35-3/4	35-3/4	35-3/4	35-3/4	35-3/4	35-3/4	35-3/4
Width w/door open 90° less door handle (in.)	37-3/8	37-3/8	37-3/8	36	36	36	36	36	36	36
Air clearances Each side (in.)	1/8	1/8	1/8	1/8	1/8	1/8	1/8	1/8	1/8	1/8
Top (in.)	1	1	1	1	1	1	1	1	1	1
Back (in.)	1	1	1	1	1	1	1	1	1	1
Approx. shipping weight (lbs.)	320	320	320	346	346	346	346	347	347	347

\*Color(s) available: BS = Black case with stainless steel doors, WW = White on white, CC = Bisque, BB = Black on black.

Add 9/16" for water hook-up. Hook-up fits in 5/8" back air clearance when calculating installation depth.

If installed against a wall, allow clearance of 14-3/16" on 25 cu. ft. and 27 cu. ft. models; 13" on 29 cu. ft. models on freezer side to remove ice bin.

To remove fresh food pans, remove door bins.

Clearances required to remove fresh food full-size pan without disassembling: 18-15/16" on 25 cu. ft. and 27 cu. ft.; 16-1/4" on 29 cu. ft.

Allow additional space for any necessary leveling adjustments.

**ALL MODELS AVAILABLE IN U.S. AND CANADA.**

# CustomStyle™ Side-By-Side Refrigerators

	GE Profile™								
	PSC23SHM PSC23SGM	PSI23SGM	PSC23NHM	PSC23NGM	PSI23NGM	PSC23MGM	PSI23MGM	PSI23SCM	PSI23MCM
Stainless steel model	●	●						●	
<b>Capacity</b>									
Total (cu. ft.)	22.7 / 22.6	22.6	22.7	22.6	22.6	22.7	22.7	22.7	22.7
Fresh food (cu. ft.)	14.41 / 14.38	14.38	14.41	14.38	14.38	14.38	14.38	14.38	14.38
Freezer (cu. ft.)	8.24	8.24	8.24	8.24	8.24	8.32	8.32	8.28	8.28
Shelf area (sq. ft.)	19.1 / 19.7	19.7	19.1	19.7	19.7	19.9	19.9	20.1	20.1
<b>Fresh Food Features</b>									
Refreshment Center	● / –		●						
ClimateKeeper™ System	●	●	●	●	●	●	●	●	●
Air tower	●	●	●	●	●	●	●	●	●
Upfront electronic digital display	●	●	●	●	●				
Upfront electronic touch temperature controls	●	●	●	●	●	●	●	●	●
Electronic sensors	●	●	●	●	●	●	●	●	●
SmartWater™ Filtration System	Plus	Plus	Plus	Plus	Plus	Plus	Plus		
LightTouch! Dispenser	Crushed Ice, Cubes, Water	Crushed Ice, Cubes, Water	Crushed Ice, Cubes, Water	Crushed Ice, Cubes, Water	Crushed Ice, Cubes, Water	Crushed Ice, Cubes, Water	Crushed Ice, Cubes, Water		
Light	●	●	●	●	●	●	●		
Child lock	●	●	●	●	●	●	●		
Door alarm	●	●	●	●	●	●	●		
Quick Ice™ feature	●	●	●	●	●	●	●		
Water filter indicator light	●	●	●	●	●	●	●		
Cabinet shelves	3 Glass	3 Glass	3 Glass	3 Glass	3 Glass	3 Glass	3 Glass	3 Glass	3 Glass
Adjustable	3	3	3	3	3	3	3	3	3
Slide-out, spill-proof	2	2	2	2	2	2	2	2	2
QuickSpace™ shelf	●	●	●	●	●	●	●	●	●
Integrated shelf system	●	●	●	●	●	●	●	●	●
Snuggler™ clip(s)	2	2	2	2	2	2	2	2	2
Deli pan	Adj. Temp.	Adj. Temp.	Adj. Temp.	Adj. Temp.	Adj. Temp.	Adj. Temp.	Adj. Temp.	Adj. Temp.	Adj. Temp.
Vegetable/fruit crisper	Adj. Humid.	Adj. Humid.	Adj. Humid.	Adj. Humid.	Adj. Humid.	Adj. Humid.	Adj. Humid.	Adj. Humid.	Adj. Humid.
Snack pan	Sealed	Sealed	Sealed	Sealed	Sealed	Sealed	Sealed	Sealed	Sealed
CustomCool™ technology	●	●	●	●	●	●	●	●	●
ClearLook™ modular door bins	3 (1 Adj.) 4 (2 Adj.)	4 (2 Adj.)	3 (1 Adj.)	4 (2 Adj.)	4 (2 Adj.)	4 (2 Adj.)	4 (2 Adj.)	4 (2 Adj.)	4 (2 Adj.)
Dairy compartment (removable) (butter dish)	Clear	Clear	Clear	Clear	Clear	Clear	Clear	Clear	Clear
Can storage rack	● / –		●						
Beverage rack	●	●	●	●	●	●	●	●	●
Egg bin (clear)	●	●	●	●	●	●	●	●	●
Interior light system	Tri-level	Tri-level	Tri-level	Tri-level	Tri-level	Dual-level	Dual-level	Dual-level	Dual-level
Quiet Package—Quiet Design	Premium	Premium	Premium	Premium	Premium	Premium	Premium	Premium	Premium
Automatic moisture control	●	●	●	●	●	●	●	●	●
NeverClean™ condenser	●	●	●	●	●	●	●	●	●
<b>Freezer Features</b>									
FrostGuard™ technology	●	●	●	●	●	●	●	●	●
Factory-installed electronic icemaker & bin	●	●	●	●	●	●	●	●	●
Wire slide-out baskets	3 (2 full-ext.)	3 (2 full-ext.)	3 (2 full-ext.)	3 (2 full-ext.)	3 (2 full-ext.)	3	3	3	3
Wire cabinet shelves	2 (1 slide-out)	2 (1 slide-out)	2 (1 slide-out)	2 (1 slide-out)	2 (1 slide-out)	2 (1 slide-out)	2 (1 slide-out)	2 (1 slide-out)	2 (1 slide-out)
Wire tilt-out door bin(s)	3 (2 Adj.)	3 (2 Adj.)	3 (2 Adj.)	3 (2 Adj.)	3 (2 Adj.)	3 (2 Adj.)	3 (2 Adj.)	4 (3 Adj.)	4 (3 Adj.)
Fixed door bins	1	1	1	1	1	1	1	1	1
Interior light	●	●	●	●	●	●	●	●	●
<b>Exterior</b>									
Color(s) available*	BS	BS	WW, CC, BB	WW, CC, BB	WW, CC, BB	WW, CC, BB	WW, CC, BB	BS	WW, CC, BB
CustomStyle™ configuration	Trimless	Trimless	Trimless	Trimless	Installed Trim	Trimless	Installed Trim	Trimless	Installed Trim
Door handles	Black Profile	SS Appearance	CM Profile	CM Profile	CM Full-Length	CM Profile	CM Full-Length	SS Appearance	CM Full-Length
Exterior design	Rounded Doors	Squared Doors	Rounded Doors	Rounded Doors	Squared Doors	Rounded Doors	Squared Doors	Squared Doors	Squared Doors
Textured steel door and case	Case only	Case only	●	●	●	●	●	Case only	●
Adjustable rollers	All	All	All	All	All	All	All	All	All
<b>Weights &amp; Dimensions</b>									
Height to top of hinge (in.)	69-1/4	69-1/4	69-1/4	69-1/4	69-1/4	69-1/4	69-1/4	69-1/4	69-1/4
Height to top of case (in.)	68-3/4	68-3/4	68-3/4	68-3/4	68-3/4	68-3/4	68-3/4	68-3/4	68-3/4
Case depth without door (in.)	23-7/8	23-7/8	23-7/8	23-7/8	23-7/8	23-7/8	23-7/8	23-7/8	23-7/8
Case depth less door handle (in.)	26-3/4	26-3/4	26-3/4	26-3/4	26-3/4	26-3/4	26-3/4	26-3/4	26-3/4
Case depth with door handle (in.)	29-3/16	28-5/16	29-3/16	29-3/16	28-5/16	29-3/16	28-5/16	28-5/16	28-5/16
Depth w/fresh food door open 90° (in.)	45-9/16	45-9/16	45-9/16	45-9/16	45-9/16	45-9/16	45-9/16	45-9/16	45-9/16
Width (in.)	35-3/4	35-3/4	35-3/4	35-3/4	35-3/4	35-3/4	35-3/4	35-3/4	35-3/4
Width w/door open 90° w/door handle (in.)	38-3/16	37-5/16	38-3/16	38-3/16	37-5/16	38-3/16	37-5/16	37-5/16	37-5/16
Air clearances	Each side (in.)	1/8	1/8	1/8	1/8	1/8	1/8	1/8	1/8
Top (in.)	1	1	1	1	1	1	1	1	1
Back (in.)	1/2	1/2	1/2	1/2	1/2	1/2	1/2	1/2	1/2
Approx. shipping weight (lbs.)	334	334	334	334	334	334	334	334	334
<b>Accessories</b>									
Factory trim kit attached	N/A	N/A	N/A	N/A	●	N/A	●	N/A	●
Black acrylic panels (optional)	N/A	N/A	N/A	N/A	PSPK23DDB	N/A	PSPK23DDB	N/A	PSPK23CBB
White acrylic panels (optional)	N/A	N/A	N/A	N/A	PSPK23DWW	N/A	PSPK23DWW	N/A	PSPK23CWW
Bisque acrylic panels (optional)	N/A	N/A	N/A	N/A	PSPK23DCC	N/A	PSPK23DCC	N/A	PSPK23CCC
Stainless steel panels (optional)	N/A	N/A	N/A	N/A	PSPK23DSS	N/A	PSPK23DSS	N/A	N/A
Black collar trim (optional)	N/A	TRMBISBB	N/A	N/A	TRMBISBB	N/A	TRMBISBB	TRMBISBB	TRMBISBB
White collar trim (optional)	N/A	TRMBISWW	N/A	N/A	TRMBISWW	N/A	TRMBISWW	TRMBISWW	TRMBISWW
Bisque collar trim (optional)	N/A	TRMBISCC	N/A	N/A	TRMBISCC	N/A	TRMBISCC	TRMBISCC	TRMBISCC
Stainless steel collar trim (optional)	N/A	TRMBISSS	N/A	N/A	TRMBISSS	N/A	TRMBISSS	TRMBISSS	TRMBISSS

\*Color(s) available: BS = Black case with stainless steel doors, SS = Stainless steel, WW = White on white, CC = Bisque, BB = Black on black, CM = Color-Matched.

If installed against a wall, allow clearance of 13-15/16" on freezer side to remove bin. Clearance required to remove fresh food full size pan without disassembling is 18-5/8".

ALL MODELS AVAILABLE IN U.S. AND CANADA.

Refrigeration

Cooking Products

Microwave Ovens

Dishwashers

Clothes Care



# Arctica™ Top-Freezer Refrigerators

	GE Profile™			
	PTS25LBM	PTS25SBM	PTS22LBM	PTS22SBM
Stainless steel model		●		●
<b>Capacity</b>				
Total (cu. ft.)	24.6	24.6	21.7	21.7
Fresh food (cu. ft.)	17.51	17.51	15.35	15.35
Freezer (cu. ft.)	7.08	7.08	6.35	6.35
Shelf area (sq. ft.)	27.1	27.1	26.3	26.3
<b>Features</b>				
ClimateKeeper™ System	●	●	●	●
Air tower (freezer)	●	●	●	●
Upfront electronic digital display	●	●	●	●
Electronic sensors	●	●	●	●
Cabinet shelves	4 Glass	4 Glass	4 Glass	4 Glass
Adjustable	4 Split	4 Split	4 Split	4 Split
Slide-out, removable	3	3	3	3
Spill-proof	4	4	4	4
ShelfSaver™ rack	●	●	●	●
Deli pan	Adj. Temperature	Adj. Temperature	Adj. Temperature	Adj. Temperature
Vegetable/fruit crisper(s)	2 Adj. Humidity	2 Adj. Humidity	2 Adj. Humidity	2 Adj. Humidity
Pivot-out pan removal system	●	●	●	●
Clear Look™ modular gallon door bins	4	4	4	4
Snugger™ clip(s)	2	2	2	2
Fixed door bins	1 (Tall Bottle)	1 (Tall Bottle)	1 (Tall Bottle)	1 (Tall Bottle)
Dairy compartment (butter dish)	●	●	●	●
Interior light system	Dual	Dual	Dual	Dual
Quiet Package—Quiet Design	Premium	Premium	Premium	Premium
Automatic moisture control	●	●	●	●
NeverClean™ condenser	●	●	●	●
<b>Freezer Features</b>				
Air tower (freezer)	●	●	●	●
Ice 'N Easy trays	3	3	3	3
Ice storage bin	Ice Bucket	Ice Bucket	Ice Bucket	Ice Bucket
Ice shelf	1 vertical	1 vertical	1 vertical	1 vertical
FrostGuard™ technology	●	●	●	●
Spill-proof freezer floor	●	●	●	●
Wire freezer compartment shelves	1 full-width (2 pos.)	1 full-width (2 pos.)	1 full-width (2 pos.)	1 full-width (2 pos.)
Freezer door bins	2 (1 Adj.)	2 (1 Adj.)	2 (1 Adj.)	2 (1 Adj.)
Tilt-out locking freezer door bin	●	●	●	●
Interior light	●	●	●	●
<b>Exterior</b>				
Color(s) available*	WW, CC, BB	BS	WW, CC, BB	BS
Deluxe door handle(s)	Color-Matched	Black	Color-Matched	Black
Customer-installed handles	●	●	●	●
Exterior design	Rounded Doors	Rounded Doors	Rounded Doors	Rounded Doors
Reversible doors	●	●	●	●
Adjustable rollers	Front	Front	Front	Front
<b>Weights &amp; Dimensions</b>				
Height to top of hinge (in.)	67-1/2	67-1/2	67-1/2	67-1/2
Height to top of case (in.)	66-7/8	66-7/8	66-7/8	66-7/8
Case depth without door (in.)	27-5/8	27-5/8	27-5/8	27-5/8
Case depth less door handle (in.)	31-5/8	31-5/8	31-5/8	31-5/8
Case depth with door handle (in.)	33-5/8	33-5/8	33-5/8	33-5/8
Depth with fresh food door open 90° (in.)	66	66	63	63
Width (in.)	35-7/8	35-7/8	32-7/8	32-7/8
Width w/door open 90° less door handle (in.)	36	36	33	33
Air clearances Each side (in.)	1/8	1/8	1/8	1/8
Top (in.)	1	1	1	1
Back (in.)	1	1	1	1
Approx. shipping weight (lbs.)	310	310	260	260

\*Color(s) available: BS = Black case with stainless steel doors, WW = White on white, CC = Bisque, BB = Black on black.

ALL MODELS AVAILABLE IN U.S. AND CANADA.

# CustomStyle™ Top-Freezer Refrigerators

	GE Profile™						
	PTC22MBM	PTC22MFM	PTC22SBM	PTC22SFM	PTI22MBM	PTI22MFM	PTI22SFM
Stainless steel model			●	●			●
<b>Capacity</b>							
Total (cu. ft.)	21.9	21.7	21.9	21.7	21.9	21.7	21.7
Fresh food (cu. ft.)	15.4	15.4	15.4	15.4	15.4	15.4	15.4
Freezer (cu. ft.)	6.5	6.3	6.5	6.3	6.5	6.3	6.3
Shelf area (sq. ft.)	22.4	20	22.4	20	22.4	20	20
<b>Features</b>							
SmartWater™ Filtration System		●		●		●	●
LightTouch! Dispenser		Crushed Ice, Cubes, Water		Crushed Ice, Cubes, Water		Crushed Ice, Cubes, Water	Crushed Ice, Cubes, Water
Illuminated upfront temperature controls	●	●	●	●	●	●	●
Cabinet shelves	4 Glass	4 Glass	4 Glass	4 Glass	4 Glass	4 Glass	4 Glass
Adjustable	4 Split	4 Split	4 Split	4 Split	4 Split	4 Split	4 Split
Slide-out, spill-proof	3	3	3	3	3	3	3
Snuggler™ clip(s)	2	2	2	2	2	2	2
QuickSpace™ shelf	●	●	●	●	●	●	●
Quick Store™ bin	●	●	●	●	●	●	●
Meat pan	Adj. Temperature	Adj. Temperature	Adj. Temperature	Adj. Temperature	Adj. Temperature	Adj. Temperature	Adj. Temperature
Vegetable/fruit crisper(s)	2 Adj. Humidity	2 Adj. Humidity	2 Adj. Humidity	2 Adj. Humidity	2 Adj. Humidity	2 Adj. Humidity	2 Adj. Humidity
Spill-proof crisper cover	●	●	●	●	●	●	●
ClearLook™ modular door bins	3 Adj. w/gallon storage	3 Adj. w/gallon storage	3 Adj. w/gallon storage	3 Adj. w/gallon storage	3 Adj. w/gallon storage	3 Adj. w/gallon storage	3 Adj. w/gallon storage
Fixed door bins	1 F/W tall bottle	1 F/W tall bottle	1 F/W tall bottle	1 F/W tall bottle	1 F/W tall bottle	1 F/W tall bottle	1 F/W tall bottle
Slide-out, slide-over pan removal system	●	●	●	●	●	●	●
Dairy compartment (removable butter dish)	●	●	●	●	●	●	●
Beverage rack	●	●	●	●	●	●	●
Egg bin (clear)	●	●	●	●	●	●	●
Interior light system	Dual	Dual	Dual	Dual	Dual	Dual	Dual
Quiet Package—Quiet Design	Deluxe	Deluxe	Deluxe	Deluxe	Deluxe	Deluxe	Deluxe
Automatic moisture control	●	●	●	●	●	●	●
NeverClean™ condenser	●	●	●	●	●	●	●
Energy Star		●		●		●	●
<b>Freezer Features</b>							
Factory-installed electronic icemaker & bin	●		●		●	●	
Ice 'N Easy trays	4		4		4		
Ice storage bin	●		●		●		
Wire compartment shelf(s)	2 Split (Adj.)	1 (Adj.)	2 Split (Adj.)	1 (Adj.)	2 Split (Adj.)	1 (Adj.)	1 (Adj.)
Door bins	2 Adj./1 F/W fixed	(1 w/gallon storage)	2 Adj./1 F/W fixed	(1 w/gallon storage)	2 Adj./1 F/W fixed	(1 w/gallon storage)	(1 w/gallon storage)
Interior light	●	●	●	●	●	●	●
<b>Exterior</b>							
Color(s) available*	WW, CC, BB	WW, CC, BB	BS	BS	WW, BB	WW, BB	BS
CustomStyle™ configuration	Trimless	Trimless	Trimless	Trimless	Installed Trim	Installed Trim	Installed Trim
Premium door handles	CM Deluxe	CM Deluxe	Black Deluxe	Black Deluxe	CM Full-Length	CM Full-Length	Stainless Steel Appearance
Choose right or left door opening	●	●	●	●	●	●	●
Reversible doors	●						
Exterior design	Rounded Doors	Rounded Doors	Rounded Doors	Rounded Doors	Squared Doors	Squared Doors	Squared Doors
Adjustable rollers	All	All	All	All	All	All	All
<b>Weights &amp; Dimensions</b>							
Height to top of hinge (in.)	69-7/8	69-7/8	69-7/8	69-7/8	69-7/8	69-7/8	69-7/8
Height to top of case (in.)	68-3/4	68-3/4	68-3/4	68-3/4	68-3/4	68-3/4	68-3/4
Case depth without door (in.)	23-3/4	23-3/4	23-3/4	23-3/4	23-3/4	23-3/4	23-3/4
Case depth less door handle (in.)	26-3/4	26-3/4	26-3/4	26-3/4	26-3/4	26-3/4	26-3/4
Case depth with door handle (in.)	28-3/8	28-5/8	28-3/8	28-5/8	28-3/8	28-3/8	28-5/8
Depth with fresh food door open 90° (in.)	61	61	61	61	61	61	61
Width (in.)	35-3/4	35-3/4	35-3/4	35-3/4	35-3/4	35-3/4	35-3/4
Width with door open 90° w/door handle (in.)	38-1/4	38-1/4	38-1/4	38-1/4	36-5/8	36-5/8	36-5/8
Air clearances Each side (in.)	1/8	1/8	1/8	1/8	1/8	1/8	1/8
Top (in.)	1	1	1	1	1	1	1
Back (in.)	1/2	1/2	1/2	1/2	1/2	1/2	1/2
Approx. shipping weight (lbs.)	300	324	300	324	300	324	360
<b>Accessories</b>							
Black acrylic panels (optional)	N/A	N/A	N/A	N/A	PTPK22CBB	PTPK22DBB	N/A
White acrylic panels (optional)	N/A	N/A	N/A	N/A	PTPK22CWW	PTPK22DWW	N/A
Stainless steel panels (optional)	N/A	N/A	N/A	N/A	PTPK22CSS	PTPK22DSS	N/A
Black collar trim (optional)	N/A	N/A	N/A	N/A	TRMBISBB	TRMBISBB	N/A
White collar trim (optional)	N/A	N/A	N/A	N/A	TRMBISWW	TRMBISWW	N/A
Bisque collar trim (optional)	N/A	N/A	N/A	N/A	N/A	N/A	N/A
Stainless steel collar trim (optional)	N/A	N/A	N/A	N/A	N/A	TRMBISSS	TRMBISSS

\*Color(s) available: BS = Black case with stainless steel doors, WW = White on white, CC = Bisque, BB = Black on black, CM = Color-Matched.

ALL MODELS AVAILABLE IN U.S. AND CANADA.

Refrigeration

Cooking Products

Microwave Ovens

Dishwashers

Clothes Care

## Bottom-Freezer Refrigerators

	GE Profile™	
	PDS18LBM**	PDS18SBM**
Stainless steel model		●
<b>Capacity</b>		
Total (cu. ft.)	18.1	18.1
Fresh food (cu. ft.)	13.44	13.44
Freezer (cu. ft.)	4.64	4.64
Shelf area (sq. ft.)	21.0	21.0
<b>Features</b>		
Brita® Filtered Water door module	●	●
Cabinet shelves	4 Glass	4 Glass
Adjustable	4 Split	4 Split
Slide-out	2	2
Spill-proof	4	4
ShelfSaver™ rack	●	●
Vegetable/fruit crisper(s)	2 Adj. Humidity	2 Adj. Humidity
Snack pan	Clear	Clear
Modular door bins	3	3
Snuggler™ clip(s)	2	2
Fixed door bins	1 F/W w/gal. storage	1 F/W w/gal. storage
Dairy compartment (butter dish)	●	●
Interior light	Dual	Dual
Quiet package—Quiet Design	Deluxe	Deluxe
Automatic moisture control	●	●
NeverClean™ condenser	●	●
<b>Freezer Features</b>		
Factory-installed electronic icemaker & bin	Opt. (IM4)	Opt. (IM4)
Ice 'N Easy trays	2	2
Slide 'n Store™ wire basket(s)	1 F/W, 2 Split	1 F/W, 2 Split
Interior light	●	●
<b>Exterior</b>		
Color(s) available*	WW, CC, BB	BS
Door handle(s)	Color-Matched	Color-Matched
Exterior design	Rounded Doors	Rounded Doors
Door stops	●	●
Reversible doors	●	
Choose left or right door opening		●
Adjustable rollers	Front	Front
<b>Weights &amp; Dimensions</b>		
Height to top of hinge (in.)	66-1/4	66-1/4
Height to top of case (in.)	65-3/4	65-3/4
Case depth without door (in.)	25-1/4	25-1/4
Case depth less door handle (in.)	28	28
Case depth with door handle (in.)	30-3/8	30-3/8
Depth w/door open 90° (in.)	57-3/4	57-3/4
Width (in.)	31	31
Side clearance for 90° door open	2-3/8	2-3/8
Air clearances Each side (in.)	0	0
Top (in.)	1	1
Back (in.)	1/2	1/2
Approx. shipping weight (lbs.)	257	257

\*Color(s) available: BS = Black case with stainless steel doors, WW = White on white, CC = Bisque, BB = Black on black.

\*\*Available September 2001

ALL MODELS AVAILABLE IN U.S. AND CANADA.

## Advantium™ Wall Ovens

	GE Profile™	
	SCB2001CSS	SCB2000CWW
	SCB2000CCC	SCB2000CBB
<b>Features</b>		
Stainless Steel Oven Interior	●	
Family Size Oven	●	
Oven Controls:		
Electronic Scrolling Display	●	
Over 100 Preprogrammed Menu Items	●	
Repeat Last	●	
Help Mode	●	
Demo Mode	●	
Interior Oven Light	●	
Beeper Sound Level Control	●	
Variable Scroll Speed	●	
Custom Recipe Saver	●	
Cooking Complete Reminder	●	
Child Lockout	●	
Frameless Glass Oven Door with Window	●	
Microwave Oven Features:		
Sensor	●	
Defrost - Auto/Time	●	
Microwave Power Output Watts	950	
<b>Appearance</b>		
Color Appearance	Stainless Steel	White on white
	Bisque	Black on black
<b>Weights &amp; Dimensions</b>		
Approx. shipping weight (lbs.)	101	
Overall Oven Interior Dimensions (in.)		
Height	8-13/32	
Width	18-29/32	
Depth	13-19/32	
Overall Dimensions (in.)		
Exterior Height	21-7/8	
Exterior Width	29-25/32	
Exterior Depth (not including handle)	15-27/32	
Oven Cabinet Width Required (in.)	30	
Cutout Height	21	
Cutout Width	28-1/2	
Cutout Depth	19	
<b>Power/Ratings</b>		
Amps @ 240V/208V	30	
<b>Accessories</b>		
Cookbook	●	
Cooking Guide	●	
Grill Tray	●	
Cooking Tray	●	
White Ceramic Tray	●	
<b>Warranty</b>		
Full One-Year In-Home Warranty*	●	
Full Ten-Year Lamp Warranty*	●	
Limited Nine-Year Magnetron Warranty*	●	

\*See written warranty for details.



# Advantium™ Above-the-Cooktop Ovens

	GE Profile™
	SCA2001BSS SCA2000BWW SCA2000BCC SCA2000BBB
<b>Features</b>	
Stainless Steel Oven Interior	●
Family Size Oven	●
Oven Controls:	
Electronic Scrolling Display	●
Over 100 Preprogrammed Menu Items	●
Repeat Last	●
Help Mode	●
Demo Mode	●
Interior Oven Light	●
Beeper Sound Level Control	●
Variable Scroll Speed	●
Custom Recipe Saver	●
Cooking Complete Reminder	●
Child Lockout	●
Two-Speed High-Capacity Exhaust Fan	●
Full-View Cooktop Lighting	●
Programmable Night Light	●
Frameless Glass Oven Door with Window	●
Microwave Oven Features:	
Sensor	●
Defrost - Auto/Time	●
Microwave Power Output Watts	950
<b>Appearance</b>	
Color Appearance	Stainless Steel White on white Bisque Black on black
<b>Weights &amp; Dimensions</b>	
Approx. shipping weight (lbs.)	101
Overall Oven Interior Dimensions (in.)	
Height	8-13/32
Width	18-29/32
Depth	13-19/32
Overall Dimensions (in.)	
Exterior Height (front)	15-19/32
Exterior Height (rear)	16-3/32
Exterior Width	29-7/8
Exterior Depth (not including handle)	14-13/16
<b>Power/Ratings</b>	
Amps @ 240V/208V	30
<b>Accessories</b>	
Cookbook	●
Cooking Guide	●
Grill Tray	●
Cooking Tray	●
White Ceramic Tray	●
Recirculating Charcoal Filter Kit (Optional)	JX81A
<b>Warranty</b>	
Full One-Year In-Home Warranty*	●
Full Ten-Year Lamp Warranty*	●
Limited Nine-Year Magnetron Warranty*	●

\*See written warranty for details.

# Advantium™ 120 Above-the-Cooktop Ovens

	GE Profile™
	SCA1001DSS SCA1000DWW SCA1000DCC SCA1000DBB
<b>Features</b>	
Stainless Steel Oven Interior	●
Family Size Oven	●
Cooking Modes:	
Speedcook	●
Traditional Oven	●
Microwave Oven	●
Warming	●
E-Z Installation	●
Oven Controls:	
Electronic Scrolling Display	●
Over 100 Preprogrammed Menu Items	●
Repeat Last	●
Help Mode	●
Demo Mode	●
Interior Oven Light	●
Beeper Sound Level Control	●
Variable Scroll Speed	●
Custom Recipe Saver	●
Cooking Complete Reminder	●
Child Lockout	●
Two-Speed High-Capacity Exhaust Fan	●
Intake Air/Grease Filter	●
Full-View Cooktop Lighting	●
Programmable Night Light	●
Frameless Glass Oven Door with Window	●
Microwave Oven Features:	
Sensor	●
Defrost - Auto/Time	●
Microwave Power Output Watts	900
<b>Appearance</b>	
Color Appearance	Stainless Steel White on white Bisque Black on black
<b>Weights &amp; Dimensions</b>	
Approx. shipping weight (lbs.)	95
Overall Oven Interior Dimensions (in.)	
Height	8-7/32
Width	21-3/32
Depth	14-3/32
Overall Dimensions (in.)	
Exterior Height (front)	15-21/32
Exterior Height (rear)	16-3/32
Exterior Width	29-7/8
Exterior Depth (not including handle)	14-13/16
<b>Power/Ratings</b>	
Input Volt/Hz	120/60
Input Amps/Watts (max)	15/1800
<b>Accessories</b>	
Cookbook	●
Cooking Guide	●
Cooking Tray	●
Recirculating Charcoal Filter Kit (Optional)	JX81A
<b>Warranty</b>	
Full One-Year In-Home Warranty*	●
Full Three-Year Lamp Warranty*	●
Limited Ten-Year Magnetron Warranty*	●

\*See written warranty for details.

Refrigeration

Cooking Products

Microwave Ovens

Dishwashers

Clothes Care

## 30" Built-In Double Ovens

## 30" Built-In Single Ovens

	GE Profile™	
	Convection Double Ovens	Microwave Double Ovens
	JTP56SD JTP56WD JTP56CD JTP56BD	JTP95WD JTP95BD
Features		
	Upper	Microwave
Oven interior	Convection/Self-Clean	Convection/Self-Clean
Oven capacity (cu. ft.)	4.2	4.2
Cleaning time	Variable	Variable (lower)
Automatic self-clean oven door lock	•	Lower
Self-clean oven w/Delay Clean option	•	Lower
TrueTemp™ System	•	Lower
CleanDesign oven interior	Upper	Lower
Variable broil/Six-pass broil element	•	Lower
SmartSet Controls	•	•
Proofing	•	•
Convection conversion	Upper	Lower
Convection Bake	Upper	Lower
Convection Roast	Upper	Lower
Automatic meat thermometer	Upper	Lower
Temperature display	•	Lower
Start pad	•	•
Delay Bake option w/Cook & Hold	•	Lower
C° or F° programmable	•	Lower
Audible preheat signal	•	Lower
Auto oven shut-off w/override	•	Lower
Electronic clock and kitchen timer	•	•
Control lock capability	•	Lower
Oven light	Halogen	Halogen Lower
Certified Sabbath mode	•	•
Microwave Oven Features:		
Microwave cooking timer		99-Min./99-Sec.
Microwave power levels		10
Sensor functions		6
Electronic MWO touch controls		•
Microwave oven cavity (cu. ft.)		1.6
MWO power output watts		1000
Turntable		•
	Upper	3 Heavy-duty
Oven racks	Lower	2 Heavy-duty
Embossed rack positions	7 Upper/6 Lower	7 Lower
Roasting rack	Upper	Lower
Broiler pan with grid	•	Lower
Appearance		
	SS WW CC BB	WW BB
Color appearance*	Stainless White Glass Bisque Glass Black Glass	White Glass Black Glass
Frameless oven doors	•	Lower
Big View windows	•	Lower
Lift-off oven doors	•	Lower
Designer-style handles	Integrated	Integrated
Flush appearance installation	•	•
Weights & Dimensions		
Approx. shipping weight (lbs.)	250	250
Oven cabinet width required (in.)	30	30
Overall dimensions (WxHxD in inches)	29-3/4 x 52-7/8 x 23-1/2	29-3/4 x 43-1/2 x 23-1/2
Overall oven interior dimensions (WxHxD in inches)	24 x 16-1/4 x 18-1/4	16-1/4 x 9-5/8 x 15-3/4
	Upper	24 x 16-1/4 x 18-1/4
	Lower	
Power/Ratings		
KW rating @ 240V	7.2	6.6
208V	5.4	5.3
Amps @ 240V	40	30
208V	30	30
Convection wattage	2500	2500
Broiler/bake wattage	3600/2700	3600/2700

\*SS = Stainless Steel, WW = White on white, CC = Bisque, BB = Black on black.

	GE Profile™	
	Convection Single Ovens	
	JTP18SD JTP18WD JTP18CD JTP18BD	
Features		
Oven interior	Convection/Self-Clean	
Oven capacity (cu. ft.)	4.2	
Cleaning time	Variable	
Automatic self-clean oven door lock	•	
Self-clean oven w/Delay Clean option	•	
TrueTemp™ System	•	
CleanDesign oven interior	•	
Variable broil/Six-pass broil element	•	
SmartSet Controls	•	
Proofing	•	
Convection conversion	•	
Convection Bake	•	
Convection Roast	•	
Automatic meat thermometer	•	
Temperature display	•	
Start pad	•	
Delay Bake option with Cook & Hold	•	
C° or F° programmable	•	
Audible preheat signal	•	
Auto oven shut-off w/override	•	
Electronic clock and kitchen timer	•	
Control lock capability	•	
Oven light	Halogen	
Certified Sabbath mode	•	
Oven racks	3 Heavy-duty	
Embossed rack positions	7	
Roasting rack	•	
Broiler pan with grid	•	
Appearance		
	SS WW CC BB	
Color appearance*	Stainless White Glass Bisque Glass Black Glass	
Frameless oven door	•	
Big View window	•	
Lift-off oven door	•	
Designer-style handle	Integrated	
Flush appearance installation	•	
Undercounter installation	•	
Weight & Dimensions		
Approx. shipping weight (lbs.)	135	
Oven cabinet width required (in.)	30	
Overall dimensions (WxHxD in inches)	29-3/4 x 28-1/4 x 23-1/2	
Overall oven interior (WxHxD in inches)	24 x 16-1/4 x 18-1/4	
Power/Ratings		
KW rating @ 240V	3.6	
208V	2.7	
Amps @ 240V	20	
208V	20	
Convection wattage	2500	
Broiler/bake wattage	3600/2700	

\*SS = Stainless Steel, WW = White on white, CC = Bisque, BB = Black on black.



## 27" Built-In Double Ovens

GE Profile™		27" Convection Double Ovens
		JKP56SD JKP56WD JKP56CD JKP56BD
Oven Features		
Features		
	Upper Oven	Convection/Self-Clean
Oven interior	Lower Oven	Self-Clean
Oven capacity (cu. ft.)		3.9
Cleaning time		Variable
Self-clean oven w/delay clean option		●
Automatic self-clean oven door lock		●
Delay Clean option		●
TrueTemp™ System		●
CleanDesign oven interior		●
Variable broil/Six-pass broil element		●
SmartSet Controls		●
Proofing	Upper	
Convection conversion	Upper	
Convection Bake	Upper	
Convection Roast	Upper	
Auto. meat thermometer	Upper	
Temperature display		●
Start pad		●
Delay Bake option w/Cook & Hold		●
C° or F° programmable		●
Audible preheat signal		●
Auto oven shut-off w/override		●
Electronic clock and kitchen timer		●
Control lock capability		●
Oven light	Halogen	
Certified Sabbath mode		●
	Upper	3 Heavy-duty
Oven racks	Lower	2 Heavy-duty
Embossed rack positions		6
Roasting rack	Upper	
Broiler pan with grid		●
Appearance		
		SS WW CC BB
Color appearance*		Stainless White Glass Bisque Glass Black Glass
Frameless oven doors		●
Big View windows		●
Lift-off oven doors		●
Designer-style handles	Integrated	
Flush appearance installation		●
Weight & Dimensions		
Approx. ship. weight (lbs.)		162
Oven cabinet width required (in inches)		27
Overall dimensions (WxHxD in inches)		26-5/8 x 51 x 23-5/8
Overall oven interior dimensions	Upper	21-1/2 x 17 x 18-1/4
(WxHxD in inches)	Lower	19 x 15 x 18
Power/Ratings		
KW rating @ 240V		6.8
208V		5.1
Amps @ 240V		30
208V		30
Convection wattage		2500
Broiler/bake wattage		3400/2640

\*SS = Stainless Steel, WW = White on white, CC = Bisque,  
BB = Black on black.

## 27" Built-In Single Ovens

GE Profile™		27" Convection Single Ovens
		JKP18SD JKP18WD JKP18CD JKP18BD
Features		
Oven interior		Convection/Self-Clean
Oven capacity (cu. ft.)		3.9
Cleaning time		Variable
Automatic self-clean oven door lock		●
Self-clean oven w/Delay Clean option		●
TrueTemp™ System		●
CleanDesign oven interior		●
Variable broil		●
SmartSet Controls		●
Convection conversion		●
Conv. Bake/Conv. Roast		●
Automatic meat thermometer		●
Temperature display		●
Start pad		●
Delay Bake option w/Cook & Hold		●
C° or F° programmable		●
Audible preheat signal		●
Auto oven shut-off w/override		●
Electronic clock and kitchen timer		●
Control lock capability		●
Oven light	Halogen	
Certified Sabbath mode		●
Oven racks		3 Heavy-duty
Embossed rack positions		6
Roasting rack		●
Broiler pan with grid		●
Appearance		
		SS WW CC BB
Color appearance*		Stainless White Glass Bisque Glass Black Glass
Frameless oven door		●
Big View window		●
Lift-off oven door		●
Designer-style handle	Integrated	
Flush appearance installation		●
Undercounter installation		●
Weight & Dimensions		
Approx. shipping weight (lbs.)		98
Oven cabinet width required (in.)		27
Overall dimensions (WxHxD in inches)		26-5/8 x 29 x 23-5/8
Overall oven interior dimensions (WxHxD in inches)		21-1/2 x 17 x 18-1/4
Power/Ratings		
KW rating @ 240V		3.4
208V		2.6
Amps @ 240V		20
208V		20
Convection wattage		2500
Broiler/bake wattage		3400/2640

\*SS = Stainless Steel, WW = White on white, CC = Bisque,  
BB = Black on black.





## 30" and 27" Warming Drawers

GE Profile™		
	30" Warming Drawers	27" Warming Drawers
	JTD910SB JTD910WB JTD910CB JTD910AB JTD910BB	JKD910SB JKD910WB JKD910CB JKD910AB JKD910BB
<b>Features</b>		
Temperature control	●	●
Proof (80°F.)	●	●
Low (140°F.)	●	●
Medium (170°F.)	●	●
High (210°F.)	●	●
Humidity control	Crisp/Moist	Crisp/Moist
Hidden control	●	●
ON/OFF switch	●	●
"ON" indicator light	●	●
Half rack	●	●
Full extension drawer glide	●	●
Removable stainless steel pan	●	●
<b>Appearance</b>		
	SS WW CC AA BB	SS WW CC AA BB
Color appearance*		
Frameless drawer front	●	●
Handle style	Integrated Designer-Style	Integrated Designer-Style
<b>Weights &amp; Dimensions</b>		
Interior dimensions (WxHxD in inches)	23-7/8 x 6-1/4 x 22-1/16	20-7/8 x 6-1/4 x 22-1/16
Cutout dimensions (WxHxD in inches)	28-1/2 x 9-1/4 x 23-1/2	25-1/2 x 9-1/4 x 23-1/2
Approx. shipping weight (lbs.)	65	59
<b>Power/Ratings</b>		
KW rating @ 120V	.45	.45
Amps @ 120V	15	15
Element wattage	450	450
<b>Accessories</b>		
1/4" panel kit capability	ZXD30B	ZXD27B
Pan set (5 pans with lids)	JXPN1	JXPN1

\*SS = Stainless Steel, WW = White on white, CC = Bisque, AA = Almond on almond, BB = Black on black.

## Built-In CleanDesign Cooktops

	GE Profile™				
	JP968SC JP968WC JP968CC JP968BC	JP960SC JP960TC JP960KC JP960CC JP960BC	JP938SC JP938WC JP938CC JP938BC	JP930SC JP930TC JP930KC JP930CC JP930BC	JP350SC JP350TC JP350WC JP350KC JP350CC JP350AC JP350BC
<b>Features</b>					
	Patterned Black Patterned White Patterned Bisque Patterned Black	Patterned Black True White True Bisque Patterned Bisque Patterned Black	Patterned Black True White Patterned Bisque Patterned Black	Patterned Black True White True Bisque Patterned Bisque Patterned Black	Patterned Black True White Patterned White True Bisque Patterned Bisque Patterned Almond Patterned Black
Glass-ceramic surface					
Number of elements	5 Ribbon	5 Ribbon	4 Ribbon	4 Ribbon	4 Ribbon
Dual 6 7/8" heating elements	1 Ribbon (2500W)	1 Ribbon (2500W)	1 Ribbon (2500W)	1 Ribbon (2500W)	1 Ribbon (2500W)
8" heating elements					2 Ribbon (2000W)
7" heating element	1 Ribbon w/Warmer (1500W)	1 Ribbon (1500W)			
7" heating elements	2 Ribbon (1800W)	2 Ribbon (1800W)	2 Ribbon (1800W)	2 Ribbon (1800W)	
Bridge element	1 Ribbon (800W)	1 Ribbon (800W)	1 Ribbon (800W)	1 Ribbon (800W)	
Total wattage	4400W	4400W	4400W	4400W	
6" heating elements	1 Ribbon (1200W)	1 Ribbon (1200W)	1 Ribbon w/Warmer (1200W)	1 Ribbon (1200W)	1 Ribbon (1200W)
Hot surface indicator lights	5	5	4	4	4
Electronic touch controls	●		●		
Pan presence sensor	●		●		
Pan size sensor	●		●		
Kitchen timer	●		●		
Control lock capability	●		●		
<b>Appearance</b>					
	SS WW CC BB	SS WW CC BB	SS WW CC BB	SS WW CC BB	SS WW WW CC CC AA BB
Color appearance*					
Frameless	●	●	●	●	●
<b>Weights &amp; Dimensions</b>					
Cooktop width (in inches)	36	36	30	30	30
Approx. shipping weight (lbs.)	45	44	38	38	38
<b>Power/Ratings</b>					
KW rating @ 240V	9.6	9.6	8.1	8.1	7.7
208V	7.2	7.2	6.1	6.1	5.8
Amps @ 240V	40	40	40	40	40
208V	40	40	30	30	30

\*SS = Stainless Steel, WW = White on white, CC = Bisque, AA = Almond on almond, BB = Black on black.

## Built-In Electric Downdraft Cooktops

	GE Profile™	
	JP989TD JP989WD JP989KD JP989CD JP989BD	
<b>Features</b>		
Downdraft exhaust (CFM)	400	
Three-speed downdraft vent fan	●	
	True White Patterned White True Bisque Patterned Bisque Patterned Black	
Glass ceramic surface		
Number of elements	4	
Dual 6 7/8" heating elements	1 Ribbon (2500W)	
7" heating elements	2 Ribbon (1800W)	
Bridge element	1 Ribbon (800W)	
Total Wattage	4400W	
6" heating elements	1 Ribbon (1500W)	
Infinite heat controls	●	
Hot surface indicator lights	4	
Heating element "ON" indicator light	●	
<b>Appearance</b>		
	WW WW CC CC BB	
Color appearance*		
Frameless	●	
<b>Weights &amp; Dimensions</b>		
Cooktop width (in inches)	30	
Overall dimensions (WxD in inches)	29-7/8 x 21-7/8	
Approximate shipping weight (lbs.)	72	
<b>Power/Ratings</b>		
KW Rating @ 240V	8.8	
208V	6.7	
Amps @ 240V	40	
208V	40	

\*WW = White on white, CC = Bisque, BB = Black on black.

## Built-In Gas Downdraft Cooktops

	GE Profile™	
	JGP989TC JGP989KC JGP989BC	
<b>Features</b>		
Cooktop burners	Sealed	
Electronic pilotless ignition	●	
	True White True Bisque Black	
Glass ceramic surface		
Burner grates	4	
Downdraft exhaust (CFM)	400	
<b>Appearance</b>		
	WW CC BB	
Color appearance*		
Frameless	●	
<b>Weights &amp; Dimensions</b>		
Cooktop width (in inches)	30	
Overall dimensions (WxD in inches)	9-7/8 x 21-7/8	
Approx. shipping weight (lbs.)	90	
<b>Power/Ratings</b>		
Gas cooktop electrical rating	120V	
Burners (000's/BTU's)		
Natural Gas/LP Gas	(2) 9.1 (1) 11.5 (1) 5.5	

\*WW = White on white, CC = Bisque, BB = Black on black.

## Built-In Gas Cooktops

	GE Profile™			
	JGP963SEC	JGP962SEC	JGP933SEC	JGP932SEC
	JGP963WEC	JGP962TEC	JGP933WEC	JGP932TEC
	JGP963CEC	JGP962KED	JGP933CEC	JGP932KED
	JGP963BEC	JGP962BEC	JGP933BEC	JGP932BEC
<b>Features</b>				
Cooktop burners	5 Sealed	5 Sealed	4 Sealed	4 Sealed
Max. Plus Burner 15,000 BTU	●	●	●	●
Precise Simmer burner(s)	2	2	●	●
Electronic pilotless ignition	●	●	●	●
Cooktop surface	Stainless Porcelain	Ceramic Glass	Stainless Porcelain	Ceramic Glass
Cooktop grates	Continuous Deluxe Cast	Continuous Deluxe Cast	Continuous Deluxe Cast	Continuous Deluxe Cast
Control panel	Stainless White Bisque Black	Stainless True White True Bisque Black	Stainless White Bisque Black	Stainless True White True Bisque Black
Controls	Upfront	Upfront	Right Side	Right Side
<b>Appearance</b>				
Color appearance*	SS WW CC BB	SS WW CC BB	SS WW CC BB	SS WW CC BB
<b>Weight &amp; Dimensions</b>				
Cooktop width (in inches)	36	36	30	30
Approx. shipping weight (lbs.)	54	59	44	49
<b>Power/Ratings</b>				
Gas cooktop electrical rating	120V, 60Hz, 5A			
Burners (000's/BTU's):	(1) 15.0/14.0 (1) 11.0/10.0 (1) 9.1/8.1 (2) 6.0/6.0	(1) 15.0/14.0 (1) 11.0/10.0 (1) 9.1/8.1 (2) 6.0/6.0	(1) 15.0/14.0 (1) 11.0/10.0 (1) 9.1/8.1 (1) 6.0/6.0	(1) 15.0/14.0 (1) 11.0/10.0 (1) 9.1/8.1 (1) 6.0/6.0

\*SS = Stainless Steel, WW = White on white, CC = Bisque, BB = Black on black

†A set of LP orifices is included with each cooktop for LP conversion. Factory set for Natural Gas.

## Built-In Integrated Downdraft Gas Cooktop

	GE Profile™	
	JGP656WB	JGP656BB
	<b>Features</b>	
	Cooktop burners	Sealed
	Electronic pilotless ignition	●
Tempered glass cooktop	White	Black
Burner grates	2	
Downdraft exhaust (CFM)	350	
Optional blower mount capabilities	●	
3-1/4" x 10" rectangular duct	●	
Upfront variable-speed fan control	●	
Removable grease filters	●	
<b>Appearance</b>		
Color appearance*	WW	BB
Upfront controls	●	
Telescopic cover plate	White	Black
Telescopic snorkel assembly	Black	
<b>Weights &amp; Dimensions</b>		
Cooktop width (in inches)	36	
Overall dimensions (WxD in inches)	36 x 22-1/4	
Approximate shipping weight (lbs.)	48	
<b>Power/Ratings</b>		
Gas cooktop electrical rating	120V, 60Hz, 15A	
Burners (000's/BTU's):	(1) 12.0/11.0	(2) 9.5/9.5 (1) 5.0/5.0

\*WW = White on white, BB = Black on black.

## Select-Top™ Modular Downdraft Cooktop

	GE Profile™	
	Dual Modular	
	JP389WW	
	JP389BV	
	<b>Features</b>	
	Configuration	Dual Modular
	Cooktop finish	White Porc.-Enam. Black Porc.-Enam.
	Infinite heat controls	Rotary
	Heating element "ON" indicator light	●
	Downdraft exhaust (CFM)	400
	Three-speed downdraft vent fan	●
<b>Appearance</b>		
Color appearance*	WW	BB
<b>Weights &amp; Dimensions</b>		
Cooktop width (in inches)	30	
Approx. ship. wt. (lbs.)	72	
<b>Power/Ratings</b>		
Amps @ 240V	40	
KW rating @ 240V	8.0	
<b>Accessories</b>		
Ribbon heating elements (one 8" and one 6")	JXDR50VW	JXDR50VB
Coil heating elements (one 6", one 8" element with removable one-piece bowls)	JXDC44RWH	JXDC43RBL
Grill Module†	JXDL44N	
Griddle Accessory	JXDD44R	
Grill Cover	JXDM3	JXDM2

\*WW = White on white, BB = Black on black.

†Grill Module includes Coil heating element, one-piece Grill Grate, and porcelain reflector pan.

### Cooktop Options

GE lets you customize your cooktop with flexible modules to suit your taste. These optional versatile modules—*Grill, Coil, Ribbon, Griddle Opening Accessory and Grill Cover*—are available at additional cost. Simply plug the modules you want into either side of the cooktop (single modular cooktops accept modules on left side only) and unplug them for easy cleaning and storage.

## Built-In Modular Downdraft Gas Cooktop

	GE Profile™	
	JGP389WEV*	
	JGP389BEV*	
	<b>Features</b>	
	Configuration	Single Modular
Accepts modules	Left Side	
Fixed gas cooktop burners (right side)	Standard	
Electronic pilotless ignition	●	
Downdraft vent fan	●	
Downdraft exhaust (CFM)	375	
<b>Appearance</b>		
Color appearance	White on white	Black on black
Up-front controls	●	
<b>Weight &amp; Dimensions</b>		
Cooktop width (in inches)	30	
Overall dimensions (W x D in inches)	29-7/8 x 21-1/2	
Approximate shipping wt. (lbs.)	58	
<b>Power/Ratings</b>		
Gas cooktop electrical rating	120V, 60Hz, 15A	
BTU's (000's)	Right side (burners)	10.0/9.0
Nat/LP	Grill Unit	8.0/8.0

\*Models JGP389WEV and JGP389BEV are shipped with fixed standard gas burners, right side. Left side accepts optional modules that must be ordered and are available at additional cost.



## 30" Slide-In Electric Ranges

Features	GE Profile™		
	JS966SD JS966TD JS966WD JS966KD JS966CD JS966BD	JSP56WD JSP56CD JSP56BD	JSP46WD JSP46CD JSP46BD
Self-clean oven with Delay Clean option	●	●	●
Variable cleaning time	●	●	●
Automatic self-clean oven door lock	●	●	●
Oven shelves	3 Heavy-Duty	3	2
CleanDesign oven interior	●		
Glass-ceramic cooktop	Patterned Black True White Patterned White True Bisque Patterned Bisque Patterned Black	Patterned White Patterned Bisque Patterned Black	Patterned White Patterned Bisque Patterned Black
Overhanging cooktop	●	●	●
Dual 6/9" heating element	1 Ribbon (2500W)	1 Ribbon (2500W)	1 Ribbon (2500W)
8" heating elements			2 Ribbon (2000W)
7" heating elements	2 Ribbon (1800W)	2 Ribbon (1800W)	
Bridge element	1 Ribbon (800W)	1 (800W)	
Total Wattage	4400W	4400W	
6" heating elements	1 Ribbon (1500W)	1 Ribbon (1500W)	1 Ribbon (1500W)
Warming zone	1 Ribbon (120W)		
Infinite heat controls	●	●	●
Convection Bake	●	●	
Convection Roast	●	●	
SmartSet Controls	●	●	●
Temperature display	●	●	●
Start pad	●	●	●
Delay Bake option w/Cook & Hold	●	●	●
C° or F° programmable	●	●	●
Audible preheat signal	●	●	●
Auto oven shut-off w/override	●	●	●
Control lock capability	●	●	●
Electronic clock/kitchen timer	●	●	●
Hot surface indicator lights	4 + Warmer	4	4
Automatic meat thermometer	●		
Heating element "ON" indicator light			
Certified Sabbath mode	●	●	
Interior oven light	Halogen	●	●
Storage drawer	Stainless White White Bisque Bisque Black	White Bisque Black	White Bisque Black
Broiler pan with grid	●	●	●
Roasting rack	●	●	
Appearance			
Color appearance*	SS WW WW CC CC BB	WW CC BB	WW CC BB
Frameless glass oven door	Stainless White White Bisque Bisque Black	White Bisque Black	White Bisque Black
Oven door with window	●	●	●
Lift-off oven door	Big View	Big View	Big View
Designer-style handle	Integrated	Integrated	Integrated
Weights & Dimensions			
Overall oven interior dimensions (WxHxD in inches)	← 24 x 16-1/4 x 18-1/4 →		24 x 17-1/2 x 18-1/4
Approx. shipping weight (lbs.)	205	200	185
Power/Ratings			
KW rating @ 240V	12.1	12.0	11.6
208V	9.1	9.0	7
Amps @ 240V	40	40	40
208V	40	40	40
Convection Wattage	2500	2500	
Broiler/Bake Wattage	3600/2700	3600/2700	3600/3400

\*SS= Stainless steel, WW = White on white, CC = Bisque, BB = Black on black.

## 30" Slide-In Gas Ranges

Features	GE Profile™	
	JGSP44WEY JGSP44CEY JGSP44AEY JGSP44BEY	
Self-Clean oven with Delay Clean option	●	
Variable cleaning time	●	
Automatic self-clean oven door lock	●	
Cooktop burners	Sealed	
Maximum output burner	●	
Standard simmer burner	●	
SmartSet Controls	●	
Temperature display	●	
Start pad	●	
Delay Bake option with Cook & Hold	●	
C° or F° programmable	●	
Audible preheat signal	●	
Auto oven shut-off with override	●	
Electronic clock and kitchen timer	●	
Control lock capability	●	
Cooktop	White Glass Bisque Glass Almond Glass Black Glass	
One-piece drip pans	Porcelain-Enameled	
Removable cooktop grates	Deluxe Cast	
Ignition system	Electronic	
Oven racks	2	
Broiler pan and grid	●	
Interior oven light	●	
Storage drawer	●	
In-oven broiling	●	
Appearance		
Color appearance*	WW CC AA BB	
Frameless glass oven door	White Bisque Almond Black	
Oven door with window	●	
Lift-off oven door	●	
Designer-style handle	Sure Grip	
Weights & Dimensions		
Overall oven interior dimensions (WxHxD in inches)	22-3/4 x 13 x 17	
Approx. shipping wt. (lbs.)	197	
Power/Ratings		
Gas range electrical rating	120V, 60Hz, 5A	
Top burners (000's BTU's) Nat/LP	(1) 12.0/9.4 (2) 9.5/7.0 (1) 5.0/4.0	
Oven/broiler burners (000's BTU's) Nat/LP	16.0/16.0	
Accessories		
Optional backguard (available at additional cost)	JXS31 JXS33 JXS34	

\*WW = White on white, CC = Bisque, AA = Almond on almond, BB = Black on black.

Universal Orifices for Natural or LP Gas. Factory set for Natural Gas. A set of LP orifices is included with each range for LP conversion.



## 30" Drop-In Electric Ranges

	GE Profile™	
	<u>JD966SD</u> <u>JD966TD</u> <u>JD966WD</u> <u>JD966KD</u> <u>JD966CD</u> <u>JD966BD</u>	<u>JDP46WD</u> <u>JDP46CD</u> <u>JDP46BD</u>
<b>Features</b>		
Self-clean oven w/Delay Clean option	●	●
Variable cleaning time	●	●
Automatic self-clean oven door lock	●	●
Oven shelves	3 Heavy-Duty	2
CleanDesign oven interior	●	
	<u>Patterned Black</u> <u>True White</u> <u>Patterned White</u> <u>True Bisque</u> <u>Patterned Bisque</u> <u>Patterned Black</u>	<u>Patterned White</u> <u>Patterned Bisque</u> <u>Patterned Black</u>
Glass ceramic cooktop		
Dual 6"/9" heating element	1 Ribbon(2500W)	1 Ribbon(2500W)
8" heating elements		2 Ribbon (2000W)
7" heating elements	2 Ribbon (1800W)	
Bridge element	1 Ribbon (800W)	
Total wattage	4400W	
6" heating elements	1 Ribbon (1500W)	1 Ribbon (1500W)
Warming zone	1 Ribbon (120W)	
Infinite heat controls	●	
Convection bake	●	
Convection roast	●	
SmartSet Controls	●	●
Temperature display	●	●
Start pad	●	●
Delay Bake option w/Cook & Hold	●	●
C° or F° programmable	●	●
Audible preheat signal	●	●
Auto oven shut-off w/override	●	●
Control lock capability	●	●
Electronic clock and kitchen timer	●	●
Automatic meat thermometer	●	
Hot surface indicator lights	4 + Warmer	4
Heating element "ON" indicator light	●	●
Certified Sabbath mode	●	
Interior oven light	Halogen	●
Broiler pan with grid	●	●
Roasting rack	●	
<b>Appearance</b>		
	<u>SS</u> <u>WW</u> <u>WW</u> <u>CC</u> <u>CC</u> <u>BB</u>	<u>WW</u> <u>CC</u> <u>BB</u>
Color appearance*		
	<u>Stainless</u> <u>White</u> <u>White</u> <u>Bisque</u> <u>Bisque</u> <u>Black</u>	<u>White</u> <u>Bisque</u> <u>Black</u>
Frameless glass oven door		
Oven door with window	Big View	Big View
Lift-off oven door	●	●
Designer-style handle	Integrated	Integrated
<b>Weights &amp; Dimensions</b>		
Overall oven interior (WxHxD in inches)	24 x 17-3/8 x 15-3/4	24 x 17-3/8 x 17-7/8
Approx. shipping weight (lbs.)	175	160
<b>Power/Ratings</b>		
Convection Wattage	2500	
Broiler/Bake Wattage	3600/2700	3600/3400
12KW rating @ 240V	12.1	11.6
208V	9.1	8.7
Amps @ 240V	40	40
208V	40	40

\*SS = Stainless Steel, WW = White on white, CC = Bisque, BB = Black on black.

## Spacemaker™ 27" Drop-In Electric Range

	GE Profile™
	JMP31WC
<b>Features</b>	
Oven cleaning	Self-Clean
Variable cleaning time	●
Automatic self-clean oven door lock	●
Oven shelves	2
	White
Lift-up overhanging cooktop	Porcelain-Enameled
8" heating elements	1
6" heating elements	3
Plug-in Calrod® heating elements	●
Infinite heat controls	●
Removable one-piece drip bowls	Chrome
Electronic clock and kitchen timer	●
Delay Bake option	●
Auto oven shut-off	●
Electronic oven control	●
Heating element "ON" indicator light	●
Interior oven light	●
Broiler pan with grid	●
<b>Appearance</b>	
Color appearance*	WW
Frameless oven door	White Glass
Oven door with window	Big View
Lift-off oven door	●
Designer-style handle	Sure Grip
<b>Weights &amp; Dimensions</b>	
Overall oven interior dimensions (WxHxD in inches)	19 x 15 x 18
Approx. shipping weight (lbs.)	119
<b>Power/Ratings</b>	
KW rating @ 240V	9.8
208V	7.3
Amps @ 240V	40
208V	40

\*WW = White on white.

# 30" QuickClean™ Electric Range

## 30" Free-Standing CleanDesign Electric Ranges

Features	GE Profile Performance™			GE Profile™		
	JBP965SD	JBP960TB JBP960WB JBP960KD JBP960BB	JBP940TD JBP940WB JBP940KD JBP940BB	JBP85TD JBP85WB JBP85KD JBP85CB JBP85BB	JBP79SD JBP79TD JBP79WB	JBP79KD JBP79CB JBP79AB JBP79BB
Self-cleaning oven	Convection	Convection	Convection	Convection	●	●
Self-clean latch	Auto	Auto	Auto	Auto	Auto	Auto
Oven capacity (cu. ft.)	4.5	4.5	4.5	4.5	5.0	5.0
CleanDesign oven Interior	●	●	●	●	●	●
Oven shelves	3 (1 off-set)	3 (1 off-set)	3 (1 off-set)	3	2	2
Patterned glass-ceramic cooktop	Black	True White White True Bisque Black	True White White True Bisque Black	True White White True Bisque Black	Black True White White	True Bisque Bisque Almond Black
One-piece upswept cooktop	●	●	●	●	●	●
Dual 6"/9" ribbon heating elements	1 Ribbon 1 (1000/2500W)	1 Ribbon 1 (1000/2500W)	1 Ribbon 1 (1000/2500W)	1 Ribbon 1 (1000/2500W)	1 Ribbon 1 (1000/2500W)	1 Ribbon 1 (1000/2500W)
8" ribbon heating elements	●	●	●	●	●	●
7" ribbon heating elements	2 (1800W)	2 (1800W)	1 (2000W)	1 (2000W)	1 (2000W)	1 (2000W)
Bridge element	1 (800W)	1 (800W)	●	●	●	●
Total wattage	4400	4400	●	●	●	●
6" ribbon heating elements	1 (1500W)	1 (1500W)	2 (1500W)	2 (1500W)	2 (1500W)	2 (1500W)
Warming option	(75W)	(75W)	(75W)	(75W)	(75W)	(75W)
Infinite heat controls	●	●	●	●	●	●
TrueTemp™ System	●	●	●	●	●	●
SmartLogic™ controls	●	●	●	●	●	●
Six-pass power bake element	●	●	●	●	●	●
Convection Bake	●	●	●	●	●	●
Convection Roast	●	●	●	●	●	●
Convenience Controls	●	●	●	●	●	●
QuickSet oven controls	QuickSet V	QuickSet V	QuickSet V	QuickSet V	QuickSet IV	QuickSet IV
Digital temperature display	●	●	●	●	●	●
Oven function icons	●	●	●	●	●	●
Glass touch controls	●	●	●	●	●	●
Digipad numeric entry	●	●	●	●	●	●
Convection conversion	●	●	●	●	●	●
Delay bake	●	●	●	●	●	●
Oven light pad	●	●	●	●	●	●
Control lock capability	●	●	●	●	●	●
Start pad	●	●	●	●	●	●
Self-clean cool-down time display	●	●	●	●	●	●
Auto self-clean	●	●	●	●	●	●
Delay clean option	●	●	●	●	●	●
Auto oven shut-off	w/override	w/override	w/override	w/override	w/override	w/override
Audible preheat signal	●	●	●	●	●	●
Dual element bake	●	●	●	●	●	●
Automatic meat thermometer	●	●	●	●	●	●
Hot surface lights	●	●	●	●	●	●
Oven "ON" light	●	●	●	●	●	●
Self-clean cycle light	●	●	●	●	●	●
Interior oven light	Auto/Pad	Auto/Pad	Auto/Pad	Auto/Pad	Auto/Pad	Auto/Pad
Full-width fluorescent cooktop light	●	●	●	●	●	●
Storage drawer	Stainless steel	White White Bisque Black	White White Bisque Black	White White Bisque Black	Stainless White White	Bisque Bisque Almond Black
Broiler pan/grid	●	●	●	●	●	●
Roasting rack	●	●	●	●	●	●
<b>Appearance</b>						
Color appearance*	SS	WW WW CC BB	WW WW CC BB	WW WW CC BB	SS WW WW	CC CC AA BB
Frameless glass oven door	Stainless steel	White White Bisque Black	White White Bisque Black	White White Bisque Black	Stainless White White	Bisque Bisque Almond Black
Oven door with window	Big View	Big View	Big View	Big View	Big View	Big View
Designer-style handle	Stainless	Sure Grip	Sure Grip	Sure Grip	Sure Grip	Sure Grip
<b>Weights &amp; Dimensions</b>						
Overall oven interior dimensions (WxHxD in inches)	24-1/4 x 19 x 17			24-1/4 x 19 x 19		
Approx. ship. wt. (lbs.)	210	206	206	205	198	198
<b>Power/Ratings</b>						
KW rating @ 240V	12.4	12.4	11.5	11.5	11.0	11.0
208V	9.3	9.3	8.6	8.6	8.3	8.3
<b>Accessories</b>						
Cooktop cleaning creme & pad	●	●	●	●	●	●

\*SS = Stainless steel, WW = White on white, CC = Bisque, AA = Almond on almond, BB = Black on black.

GE Profile™	
JBP48WB JBP48CB JBP48BB	
<b>Features</b>	
Oven cleaning	Self-Clean
Oven capacity (cu. ft.)	5.0
Oven shelves	2
Upswept porcelain-enameled cooktop	●
Clean-Well™ Cooktop System	●
Lift-up cooktop w/dual support rods	●
8" heating elements	2 (6 turns)
6" heating elements	2 (5 turns)
Warming option	●
Infinite heat controls	●
Plug-in Calrod® heating elements	●
Removable 1-piece drip bowls	Grey Black Black
TrueTemp™ System	●
SmartLogic™ controls	●
Six-pass power bake element	●
Convenience controls	●
QuickSet oven controls	QuickSet IV
Digital temperature display	●
Electronic oven controls	●
Auto oven shut-off	w/override
Control lock capability	●
Start pad	●
Delay clean option	●
Auto self-clean	●
Self-clean cool down display	●
Audible preheat signal	●
Clock and minute timer	●
Dual element bake	●
Heating element "ON" indicator light	●
Interior oven light	Auto/Switch
Preheated oven light	In Display
Removable full-width storage drawer	White Bisque Black
Broiler pan with grid	●
<b>Appearance</b>	
Color appearance*	WW CC BB
Frameless glass oven door	White Bisque Black
Oven door with window	Big View
Removable oven door	●
Designer-style handle	Sure Grip
Textured steel side panels	●
<b>Weights &amp; Dimensions</b>	
Overall oven interior dimensions (WxHxD in inches)	24-1/4 x 19 x 19
Approx. shipping weight (lbs.)	176
<b>Power/Ratings</b>	
KW rating @ 240V	11.7
208V	8.8

\*WW = White on white, CC = Bisque, BB = Black on black.

Refrigeration

Cooking Products

Microwave Ovens

Dishwashers

Clothes Care



# 30" GE Spectra™ Self-Clean Gas Ranges

	GE Profile Performance™		GE Profile™			
	JGB920SEC JGB920WEC JGB920KEC JGB920CEC JGB920BEC	JGB910SEC JGB910WEC JGB910CEC JGB910BEC	JGB90MEB	JGBP86WEB JGBP86CEB JGBP86BEB	JGBP85WEB JGBP85CEB JGBP85AEB JGBP85BEB	JGBP79MEB JGBP79WEB JGBP79CEB JGBP79BEB
<b>Capacity</b>						
Extra-large self-clean oven	•	•	•	•	•	•
<b>Features</b>						
	Black White True Bisque Bisque Black					
Ceramic glass cooktop						
Cooktop burners	Sealed	Sealed	Sealed	Sealed	Sealed	Sealed
Maximum Output burner (Nat.)	(2) 12,000/ 1,600 BTU	(2) 12,000/ 1,000 BTU	(2) 12,000/ 1,000 BTU	(2) 12,000/ 1,000 BTU	(2) 12,000/ 1,000 BTU	(2) 12,000/ 1,000 BTU
Precise Simmer burner (Nat.)	(1) 5,200/950 BTU	(1) 5,000/600 BTU	(1) 5,000/600 BTU	(1) 5,000/600 BTU	(1) 5,000/600 BTU	(1) 5,000/600 BTU
All-purpose burners (Nat.)	(1) 9,500/1250 BTU	(1) 9,500/850 BTU	(1) 9,500/850 BTU	(1) 9,500/850 BTU	(1) 9,500/850 BTU	(1) 9,500/850 BTU
Warming Zone (120 Watts)	•					
Warming zone hot light	•					
Valves (degree of turn)	270	270	270	270	270	270
TrueTemp™ System	•	•	•	•	•	•
SmartLogic™ controls	•	•	•	•	•	•
Convection Bake/Roast	•	•				
QuickSet oven controls	QuickSet V	QuickSet V	QuickSet V	QuickSet V	QuickSet V	QuickSet IV
Auto Self-Clean	•	•	•	•	•	•
Electronic oven control	•	•	•	•	•	•
Hi/Low broil	•	•	•	•	•	•
Electronic clock and timer	•	•	•	•	•	•
Automatic oven timer	•	•	•	•	•	•
Audible preheat signal	•	•	•	•	•	•
Auto oven shut-off	•	•	•	•	•	•
One-piece upswept cooktop	Porc.-Enam.	Porc.-Enam.	Porc.-Enam.	Porc.-Enam.	Porc.-Enam.	Porc.-Enam.
Porcelain-enameled one-piece drip pans		Black Grey Bisque Black	Black	Grey Bisque Black	Grey Bisque Taupe Black	Black Grey Bisque Black
Removable square grates	Black Heavy Cast Grey Heavy Cast Taupe Heavy Cast Taupe Heavy Cast Black Heavy Cast	Black Heavy Cast Grey Heavy Cast Taupe Heavy Cast Taupe Heavy Cast Black Heavy Cast	Professional Grates	Grey Taupe Black	Grey Heavy Cast Taupe Heavy Cast Taupe Heavy Cast Black Heavy Cast	Black Heavy Cast Grey Heavy Cast Taupe Heavy Cast Black Heavy Cast
Ignition system	Electronic	Electronic	Electronic	Electronic	Electronic	Electronic
Oven racks	3	3	3	3	3	3
Six embossed rack positions	•	•	•	•	•	•
Extra-large broiler pan/grid	•	•	•	•	•	•
Scratch-resistant backguard	Stainless White Glass Bisque Glass Bisque Glass Black Glass	Stainless White Glass Bisque Glass Black Glass	Soft Stainless	White Glass Bisque Glass Black Glass	White Glass Bisque Glass Almond Glass Black Glass	Stainless Porc.-Enam. Porc.-Enam. Porc.-Enam.
Fluorescent backguard light	•	•		•	•	
Interior oven light	•	•	•	•	•	•
Warming drawer	450 Watt	450 Watt	450 Watt	450 Watt	450 Watt	450 Watt
Infinite control	•	•	•	•	•	•
Temp. settings (low, med, high)	150° - 220° F	150° - 220° F	150° - 220° F	150° - 220° F	150° - 220° F	150° - 220° F
Stainless steel insert	•	•				
In-oven broiling	•	•	•	•	•	•
<b>Appearance</b>						
	SS WW CC CC BB	SS WW CC BB	BC	WW CC BB	WW CC AA BB	BC WW CC BB
Color appearance*						
Frameless removable oven door with Big View window	Stainless steel White Glass Bisque Glass Bisque Glass Black Glass	Stainless steel White Glass Bisque Glass Black Glass	Soft Stainless	White Glass Bisque Glass Black Glass	White Glass Bisque Glass Almond Glass Black Glass	Soft Stainless White Glass Bisque Glass Black Glass
Designer-style handle	Sure Grip	Sure Grip	Professional-Style	Sure Grip	Sure Grip	Sure Grip
Designer-style control knobs	•	•	Professional-Style	•	•	•
Four leveling legs	•	•	•	•	•	•
<b>Weights &amp; Dimensions</b>						
Overall oven interior dimensions (WxHxD in inches)	← 24 x 17 x 19 →					
Approx. shipping weight (lbs.)	246	225	230	220	220	210
<b>Power/Ratings</b>						
Top burners (000's BTU's) Nat/LP	(2) 12.0/11.0 (1) 5.2/5.2 (1) 9.5/8.5			(2) 12.0/11.0 (1) 5.0/5.0 (1) 9.5/9.5		
Oven/broiler burners (000's BTU's) Nat/LP				16.0/16.0 Oven 13.5/12.0 Broil		
Gas range electrical rating	← 120V, 60Hz, 5A →					
LP conversion kit (included)	•	•	•	•	•	•

\*SS = Stainless steel, WW = White on white, CC = Bisque, AA = Almond on almond, BB = Black on black, BC = Soft stainless  
Factory set for Natural Gas. A set of LP orifices is included with each range for LP conversion.

## Slide-Out Hoods

	GE Profile™							
	JV960SC	JV930SC	JV696S	JV695S	JV694S	JV396S	JV395S	JV394S
<b>Features</b>								
Variable speed fan control	●	●	●	●	●	●	●	●
Auto heat sensor	●	●	●	●	●	●	●	●
Vertical exhaust (CFM)	300	300	300	300	300	300	300	300
Sones rating: Top exhaust	4.5	4.5	4.5	4.5	4.5	4.5	4.5	4.5
Removable grease filter*	●	●	●	●	●	●	●	●
Filter size (sq. in.)	147	147	147	147	147	147	147	147
Cooktop light	●	●	●	●	●	●	●	●
3-1/4" x 10" rectangular duct	●	●	●	●	●	●	●	●
<b>Appearance</b>								
Color appearance**	BA	BA	CC	WW	BB	CC	WW	BB
<b>Weights &amp; Dimensions</b>								
Width (in inches)	36	30	36	36	36	30	30	30
Approximate shipping weight (lbs.)	43	40	43	43	43	40	40	40
<b>Power/Ratings</b>								
Current rating Amps @ 120V	3.7	3.7	3.7	3.7	3.7	3.7	3.7	3.7

\*Has washable one-piece smoke/grease filter.

\*\*WW = White on white, BB = Black on black, CC = Bisque, BA = Brushed Aluminum.

## 36" Designer Hoods

	GE Profile™	
	JV966DSS	JV965DWW JV965DCC JV965DBB
<b>General</b>		
Width	36"	36"
Height	18"	18"
<b>Features</b>		
Ducting	Vertical Only	Vertical Only
Duct Size	7" round	7" round
CFM Rating	600	600
Sones Rating	7	7
Filters	●	●
Filter Cleaning	Dishwasher Safe	Dishwasher Safe
Lighting	Dual Halogen	Dual Halogen
Control Type	Manual	Manual
Control Location	Hidden	Hidden
Four-Speed Fan Control	●	●
Light Settings	Off/High/Night	Off/High/Night
Blower/Light Switch Color	Black	White Bisque Black
<b>Appearance</b>		
Color appearance*	SS	WW CC BB
<b>Weights &amp; Dimensions</b>		
Approx. shipping weight (lbs.)	88	88
<b>Power/Ratings</b>		
Current rating amps @ 120V	3.6	3.6
<b>Accessories/Kits</b>		
Baffle Filter Kit	●	●
Optional Chimney Kit	●	●

\*SS = Stainless steel, WW = White on white, CC = Bisque, BB = Black on black.

## 30" Designer Hoods

	GE Profile™	
	JV936DSS	JV935DWW JV935DCC JV935DBB
<b>General</b>		
Width	30"	30"
Height	18"	18"
<b>Features</b>		
Ducting	Vertical Only	Vertical Only
Duct Size	7" round	7" round
CFM Rating	600	600
Sones Rating	7	7
Filters	●	●
Filter Cleaning	Dishwasher Safe	Dishwasher Safe
Lighting	Dual Halogen	Dual Halogen
Control Type	Manual	Manual
Control Location	Hidden	Hidden
Four-Speed Fan Control	●	●
Light Settings	Off/High/Night	Off/High/Night
Blower/Light Switch Color	Black	White Bisque Black
<b>Appearance</b>		
Color appearance*	SS	WW CC BB
<b>Weights &amp; Dimensions</b>		
Approx. shipping weight (lbs.)	75	75
<b>Power/Ratings</b>		
Current rating amps @ 120V	3.6	3.6
<b>Accessories/Kits</b>		
Baffle Filter Kit	●	●
Optional Chimney Kit	●	●

\*SS = Stainless steel, WW = White on white, CC = Bisque, BB = Black on black.

## Telescopic Downdraft Systems

	GE Profile™			
	JVB96SA	JVB93SA	JVB67AWW JVB67ACC JVB67ABB	JVB37AWW JVB37ACC JVB37ABB
<b>Features</b>				
Variable speed fan control	●	●	Upfront w/slide	Upfront w/slide
Separate remote raise/lower switch			●	
Downdraft exhaust (CFM)	500	500	350	350
Optional blower mount capabilities			●	●
3-1/4" x 10" rectangular duct	●	●	●	●
Minimum 6" round duct capability			●	●
Removable grease filters	●	●	●	●
<b>Appearance</b>				
Color appearance*	SS	SS	WW CC BB	WW CC BB
Cover plate			White Bisque Black	White Bisque Black
Telescopic snorkel assembly			Black	Black
<b>Weights &amp; Dimensions</b>				
Width (in inches)	36	30	36	30
Approximate shipping weight (lbs.)	62	60	76	72
<b>Power/Ratings</b>				
Current rating Amps @ 120V	4.0	4.0	4.0	4.0

\*SS = Stainless steel, WW = White on white, CC = Bisque, BB = Black on black.

**Note:** Approved for use with GE Profile™ and GE electric and sealed burner gas cooktops.

## High-Performance and Performance Hoods

	GE Profile™					
	High-Performance				Performance	
	Width					
	30"					
	36"	JV666C	JV665C	JV636C	JV536C	JV535C
				JV635C	JV566C	JV565C
<b>Features</b>						
Two-speed fan control					●	●
Three-speed fan control	with boost	with boost	with boost	with boost		
Vertical exhaust (CFM)	350	350	350	350	190	190
Rear exhaust (CFM)	400	400	400	400	200	200
Damper included (rectangular)	●	●	●	●	●	●
Optional damper accessory (round)	JXDA23	JXDA23	JXDA23	JXDA23	JXDA23	JXDA23
Sones rating:						
Top exhaust	4.0/7.0*	4.0/7.0*	4.0/7.0*	4.0/7.0*	4.0	4.0
Rear exhaust	4.0/7.0*	4.0/7.0*	4.0/7.7*	4.0/7.7*	4.0	4.0
Removable grease filters	2 <sup>†</sup>	2 <sup>†</sup>	2 <sup>†</sup>	2 <sup>†</sup>	2 <sup>††</sup>	2 <sup>††</sup>
Filter size (sq. in.)	207	207	171	171	171/207	171/207
Cooktop light(s)**	2 Halogen (50 watts)	2 Halogen (50 watts)	2 Halogen (50 watts)	2 Halogen (50 watts)	2 Halogen (50 watts)	2 Halogen (50 watts)
Night light position on light switch	●	●	●	●	●	●
3-1/4" x 10" rectangular duct	●	●	●	●	●	●
7" round duct	●	●	●	●	●	●
Non-vented					●	●
Silverstone underside coating	●	●	●	●		
<b>Appearance</b>						
Color appearance***	SS	WW BB	SS	WW BB	SS	WW CC BB
<b>Weights &amp; Dimensions</b>						
Approximate shipping weight (lbs.)	35	35	30	30	30	30
<b>Power/Ratings</b>						
Current rating amps @ 120V	2.5	2.5	2.5	2.5	1.4	1.4

\*Top exhaust sones rating when in boost mode.

\*\*Light bulbs not furnished.

\*\*\*SS = Stainless steel, WW = White on white, CC = Bisque, AA = Almond on almond, BB = Black on black.

<sup>†</sup>WB02X10713 (30") or WB02X10710 (36") removable grease filter is available for additional cost. Call toll free 800.626.2002. (Models JV666/665 and JV636/635)

<sup>††</sup>WB02X10709 (30") or WB02X10706 (36") removable grease filter and WB02X10707 (30") or WB02X10708 (36") removable charcoal filter are available for additional cost. Call toll free 800.626.2002. (Models JV566/565 and JV536/535)



# Spacemaker® Convection/ Microwave Ovens

# Convection/Microwave Wall Ovens

	GE Profile™	
	JVM1490SD JVM1490WD JVM1490CD JVM1490BD	JVM1190SY JVM1190WY JVM1190BY
<b>Capacity</b>		
Oven cavity (cu. ft.)	1.4	1.1
<b>Features</b>		
Watts (IEC-705 Test Procedure)	900	825
Controls	Membrane/Dial	Electronic Touch
SmartControl System w/Interactive Display	●	●
Electronic scrolling digital display w/Clock and AM/PM	2 Lines	1 Line
Variable Scroll Speed	●	●
Help Pad	●	●
Concurrent programming	●	●
Display On/Off / Bilingual	● / ●	● / -
Cavity Lighting	Halogen	Incandescent
Cooktop Lighting	Halogen	Incandescent
Sensor Controls		
Cook	Chicken, Fish, Potato	
Beverage	●	●
Popcorn	●	●
Reheat	●	●
Vegetables (Canned/Fresh/Frozen)	●	●
Convection Controls	●	●
Convection Broil		Hi/Lo
Convection Bake	●	●
Combination Roast		●
Sensor Combination		Chicken, Fish, Potato
Combination Bake/Fast Bake	● / ●	● / -
Express Cook (1-6 minutes)	● / ●	● / -
Instant On Controls	●	●
Time Cook	I & II	I & II
Add 30 Seconds	●	●
Temp Cook	●	●
Auto/Time/Fast Defrost	● / ● / ●	● / ● / -
Power levels	10	10
Delay Start		●
Night Light	●	●
Programmable Night Light	●	●
Timer On/Off	●	●
Reminder		●
Variable Beeper Volume Control	●	●
Cooking Complete Reminder	●	●
Child Lockout	●	●
Two-speed venting	●	●
<b>Appearance</b>		
	SS WW CC BB	SS WW BB
Color appearance*		
Case color	Stainless Steel White on white Bisque Black on black	Stainless Steel White on white Black on black
Door color	Stainless Steel White on white Bisque Black on black	Stainless Steel White on white Black on black
Designer-style handle	●	●
<b>Weights &amp; Dimensions</b>		
Approx. shipping weight (lbs.)	98	98
WxHxD-JVM1490		
Cavity (inches)	20-25/32 x 8-7/32 x 13-13/16	
Exterior	29-7/8 x 16-7/32 x 15-21/32	
WxHxD-JVM1190		
Cavity (inches)	18 x 8-1/16 x 12-1/2	
Exterior	29-15/16 x 15-1/2 x 14-1/4	
<b>Power/Ratings</b>		
2450 Frequency (MHz)	●	●
Watts	1800	1300
Electrical input @ 120V Amperage	15	12.5
<b>Accessories</b>		
Convection Rack/Broil Pan	● / -	● / ●
<b>Warranty</b>		
Full One-Year In Home Warranty**	●	●
Limited Nine-Year Magnetron Warranty** (10 years total)	●	●

\*SS = Stainless steel, WW = White on white, CC = Bisque, BB = Black on black.

\*\*See written warranty for details.

	GE Profile™		
	JEB1095SB	JEB1095WB JEB1095CB	JEB1095BB
<b>Capacity</b>			
Oven cavity (cu. ft.)	1.0	1.0	1.0
<b>Features</b>			
Watts (IEC-705 Test Procedure)	800	800	800
Electronic Touch Controls	●	●	●
Electronic digital display w/clock	●	●	●
Beverage Pad	Sensor	Sensor	Sensor
Cook Pad	Sensor	Sensor	Sensor
Popcorn Pad	Sensor	Sensor	Sensor
Reheat Pad	Sensor	Sensor	Sensor
Convection Cook	●	●	●
Combination Cook	●	●	●
Combination Roast (Probe)	●	●	●
Express Cook	●	●	●
Instant On Controls	●	●	●
Time Cook	I & II	I & II	I & II
Add 30 Seconds	●	●	●
Temp Cook/Hold (Probe)	●	●	●
Auto Defrost/Time Defrost	●	●	●
Power levels	10	10	10
Delay/Start Reminder	●	●	●
Minute Pad	●	●	●
Program cooking	5 Stage	5 Stage	5 Stage
Kitchen timer	99-M./99-S. Digital	99-M./99-S. Digital	99-M./99-S. Digital
Variable Beeper Volume	●	●	●
Cooking Complete Reminder	●	●	●
<b>Appearance</b>			
Color appearance*	SS	WW/CC	BB
Designer-style handle	●	●	●
<b>Weights &amp; Dimensions</b>			
Approx. shipping wt. (lbs.)	84	84	84
Cavity	18x8-3/16x11-1/2		
WxHxD (inches) Exterior**	26-3/4x18-5/8x16-3/8		
<b>Power/Ratings</b>			
2450 Frequency (MHz)	●	●	●
Electrical input Watts	1450	1450	1450
@ 120V Amperage	13.0	13.0	13.0
<b>Accessory</b>			
Deluxe cookbook	●	●	●
Wire oven rack	●	●	●
30" trim kit (included)	●	●	●
<b>Warranty</b>			
Full One-Year In-Home Warranty†	●	●	●
Limited Nine-Year Magnetron Warranty† (10 years total)	●	●	●

\*SS = Stainless steel, WW = White on white, CC = Bisque, BB = Black on black.

\*\*Exterior dimensions: depth excludes handle.

†See written warranty for details.

Refrigeration

Cooking Products

Microwave Ovens

Dishwashers

Clothes Care

# Spacemaker® Microwave Ovens

	GE Profile™	
	JVM3660SD JVM3660WD JVM3660CD JVM3660BD	JVM1860SD JVM1860WD JVM1860CD JVM1860BD
<b>Capacity</b>		
Oven cavity (cu. ft.)	1.8	1.8
<b>Features</b>		
Watts (IEC-705 Test Procedure)	1000	1000
Electronic touch controls	●	●
SmartControl System w/Interactive Display	●	●
VFD scrolling	2 lines	2 lines
Demo Mode	●	●
Clock and AM/PM Pad	●	●
Clock Saver	●	●
Variable Scroll Speed	●	●
Help Pad	●	●
Concurrent programming	●	●
Display On/Off / Bilingual	● / ●	● / ●
Sensor Controls		
Beverage	●	●
Chicken	●	●
Fish	●	●
Meats	●	●
Popcorn	●	●
Potatoes	●	●
Reheat	●	●
Vegetables	●	●
Custom Pad(s)	1	1
Express Cook (1-6 min.)	●	●
Instant On Controls	●	●
Time Cook	I & II	I & II
Add 30 Seconds	●	●
Auto/Time/Quick Defrost	● / ● / ●	● / ● / ●
Power levels	10	10
Delay Start	●	●
Reminder	●	●
CircuWave™ Plus Cooking System	●	●
Cooking Rack(s)	1	2
Turntable On/Off	●	●
Halogen interior lighting	●	●
Halogen cooktop lighting	●	●
Full-View cooktop lighting	●	●
Night light	●	●
Programmable night light	●	●
Timer On/Off	●	●
Beeper sound level control	●	●
Cooking Complete Reminder	●	●
Child Lockout	●	●
300 CFM exhaust fan	3 Speed + Boost	3 Speed + Boost
Easy Mount Installation	●	●
<b>Appearance</b>		
Color appearance*	SS, WW, CC, BB	SS, WW, CC, BB
Case color	Stainless, White, Bisque, Black	Stainless, White, Bisque, Black
Designer-style handle	●	●
Big View window	●	●
<b>Weights &amp; Dimensions</b>		
Approx. shipping weight (lbs.)	80	68
Cavity	21-29/32 x 9-1/2 x 14-19/32	21-29/32 x 9-1/2 x 14-19/32
WxHxD (in inches)	Exterior** 35-7/8 x 16-13/32 (rear) x 15-1/6	29-7/8 x 16-15/32 (rear) x 15-1/16
<b>Power/Ratings</b>		
2450 Frequency (MHz)	●	●
Electrical input	Watts 1480	1480
@ 120V	Amperage 15	15
<b>Warranty</b>		
Full One-Year In-Home Warranty†	●	●
Limited Nine-Year Magnetron Warranty† (10 years total)	●	●

\*SS = Stainless steel, WW = White on white, CC = Bisque, AA = Almond on almond, BB = Black on black.

\*\*Exterior dimensions: depth excludes handle.

†See warranty for details.

# Countertop Convection/ Microwave Ovens

	GE Profile™		
	JE1590SC	JE1590WC JE1590CC	JE1590BC
<b>Capacity</b>			
Cavity (cu. ft.)	1.5	1.5	1.5
<b>Features</b>			
Output (watts) Microwave	1000	1000	1000
Cooking Modes	MW & Convection	MW & Convection	MW & Convection
Control	Tactile Switches & Dial	Tactile Switches & Dial	Tactile Switches & Dial
Turntable	Glass Recessed	Glass Recessed	Glass Recessed
TT Diameter	12-3/4"	12-3/4"	12-3/4"
Electrical			
Input Volt/Hertz	120/60	120/60	120/60
Input Amps/Watts (max.)	15/1500	15/1500	15/1500
Display Type	VFD 2 lines scrolling	VFD 2 lines scrolling	VFD 2 lines scrolling
Start/Pause	●	●	●
Clear Off	●	●	●
Power Level (Microwave)	10	10	10
Timer On/Off	●	●	●
Clock	12 hr.	12 hr.	12 hr.
Auto Defrost	●	●	●
Time Defrost	●	●	●
Express Cook Pads	Instant On 1-6 min.	Instant On 1-6 min.	Instant On 1-6 min.
Scroll Speed	Optional Pad	Optional Pad	Optional Pad
Time Cook	I & II	I & II	I & II
Time Preference	Time Input Button	Time Input Button	Time Input Button
Sensor Pads			
Popcorn	Instant On	Instant On	Instant On
Reheat	Instant On	Instant On	Instant On
Cook	7 Codes	7 Codes	7 Codes
Beverage	Instant On	Instant On	Instant On
Convection Cook	●	●	●
Pads Combination Cook	●	●	●
Child Lockout	●	●	●
Cooking Complete Reminder	●	●	●
Display On/Off	Optional Pad	Optional Pad	Optional Pad
<b>Appearance</b>			
Case	Black	White, Bisque	Black
Door	Stainless	White, Bisque	Black
Color	Door Screen	Black	White, Bisque
<b>Weights &amp; Dimensions</b>			
Cavity	15-1/4 x 10-7/8 x 15-1/4		
WxHxD (inches)	Exterior* 22-5/8 x 14-7/8 (rear) x 19-7/8		
Net Weight	52	52	52
Approx. shipping wt. (lbs.)	59	59	59
<b>Accessories</b>			
Trim kits-27"	JX1527CSC	JX1527CWC / CCC	JX1527CBC
Trim kits-30"	JX1530CSC	JX1530CWC / CCC	JX1530CBC
Built-in Kit	●	●	●
<b>Warranty</b>			
Full One-Year In-Home Warranty**	●	●	●
Limited Nine-Year Magnetron Warranty** (10 years total)	●	●	●

\*Exterior dimensions: depth excludes handle.

\*\*See written warranty for details.

# Countertop Microwave Ovens

	GE Profile™			
	Extra-large	Full-size	Family-size	Mid-size
	JE1860SB JE1860WB JE1860CB JE1860GB	JE1660WB JE1660GB	JE1360WC JE1360BC	JE1160WC JE1160BC
<b>Capacity</b>				
Oven cavity (cu. ft.)	1.8	1.6	1.3	1.1
<b>Features</b>				
Watts (IEC-705 Test Procedure)	1100	1100	1100	1100
Electronic Touch Controls	●	●	●	●
Scrolling Display with Help Pad	●	●	●	●
Demo Mode	●	●	●	●
Electronic digital display w/clock	●	●	●	●
Display On/Off	●	●	●	●
Beverage Pad	Sensor	Sensor	Sensor	Sensor
Chicken/Fish Pad	Sensor	Sensor	Sensor	Sensor
Potato Pad	Sensor	Sensor	Sensor	Sensor
Vegetable Pad	Sensor	Sensor	Sensor	Sensor
Popcorn Pad	Sensor	Sensor	Sensor	Sensor
Reheat Pad	Sensor	Sensor	Sensor	Sensor
Express Cook	●	●	●	●
Instant On Controls	●	●	●	●
Time Cook	I & II	I & II	I & II	I & II
Add 30 Seconds	●	●	●	●
Temp Cook/Hold (probe)				
Auto Defrost	●	●	●	●
Time Defrost	●	●	●	●
Power levels	10	10	10	10
SmartRack				
Turntable	●	●	●	●
Turntable On/Off	●			
Kitchen timer	Timer On/Off	Timer On/Off	Timer On/Off	Timer On/Off
Delay Start/Reminder	●	●	●	●
Sound On/Off				
Variable Beeper Control	●	●	●	●
Cooking Complete Reminder	●	●	●	●
Child Lockout	●	●	●	●
<b>Appearance</b>				
Color appearance*	SS WW CC BB	WW BB	WW BB	WW BB
Case color	Greystone White Bisque Greystone	White Greystone	White Black	White Black
Door color	Stainless Steel White Bisque Black	White Black	White Black	White Black
<b>Weights &amp; Dimensions</b>				
Approx. shipping wt. (lbs.)	48	50	44	40
Cavity	17-1/16 x 9-3/4 x 18-3/8	16-1/2 x 9-23/32 x 16-27/32	14-3/4 x 9-1/4 x 16	13-11/16 x 8-1/2 x 14-15/16
WxHxD (in inches)	23-7/8 x 13-1/2 x 19-1/4	23-21/32 x 13-5/16 x 18-5/16	21-7/8 x 12-5/8 x 17-1/4	20-1/2 x 11-7/8 x 16-15/16
<b>Power/Ratings</b>				
2450 Frequency (MHz)	●	●	●	●
Electric Watts	1550	1500	1550	1500
input @ 120V Amperage	13.6	13.0	13.3	13.0
<b>Accessories</b>				
Optional built-in kit	JX1830SB/ JX1827SB JX1830WB/ JX1827WB JX1830CB/ JX1827CB JX1830BB/ JX1827BB	JX1530MWW/ JX1527MWW JX1530MBW/ JX1527MBW		
Optional hanging kit				Pub. No. 4-A019
<b>Warranty</b>				
Full One-Year Warranty†	In-Home	In-Home	Carry-In	Carry-In
Limited Nine-Year Magnetron Warranty† (10 years total)	●	●	●	●

\*SS = Stainless Steel, WW = White on white, CC = Bisque, BB = Black on black.

\*\*Exterior dimensions: height includes feet.

†See written warranty for details.

**Note:** Refer to page 118 for information on Trim Kits (Available at additional cost)

Refrigeration

Cooking Products

Microwave Ovens

Dishwashers

Clothes Care



## Spacemaker II™ Microwave Ovens

	GE Profile™	
	JEM31SA	JEM31WA JEM31CA JEM31GA
<b>Capacity</b>		
Oven cavity (cu. ft.)	.9	.9
<b>Features</b>		
Watts (IEC-705 Test Procedure)	800	800
Electronic Touch Controls	●	●
Scrolling Display with Help	●	●
Electronic digital display w/clock	●	●
Beverage	Sensor	Sensor
	Chicken/ Fish Potato Vegetable Sensor	Chicken/ Fish Potato Vegetable Sensor
Cook	Sensor	Sensor
Popcorn	Sensor	Sensor
Reheat	Sensor	Sensor
Express Cook	●	●
Instant On Controls	●	●
Time Cook I & II	●	●
Add 30 Seconds	●	●
Auto Defrost/Time Defrost	●	●
Power levels	10	10
Kitchen timer	Timer On/Off	Timer On/Off
Beeper Volume	●	●
Cooking Complete Reminder	●	●
Delay Start/Reminder	●	●
Child Lockout	●	●
<b>Appearance</b>		
Color appearance*	SS	WW CC BB
Door color	Stainless Steel	White Bisque Black
Case color	Stainless Steel	White Bisque Greystone
<b>Weights &amp; Dimensions</b>		
Approx. shipping wt. (lbs.)	41	41
WxHxD	16-1/2 x 7-7/16 x 11-1/4	
(in inches)	23-25/32 x 11-3/16 x 12-9/32	
<b>Power/Ratings</b>		
2450 Frequency (MHz)	●	●
Electrical input	1300	1300
@ 120V	Amperage	11.5
<b>Accessories</b>		
Hanging kit (Pub. No. 4-A019)†	Optional	Optional
Optional built-in kit	JX827WN	JX827BN/ JX827CD/ JX827SS
<b>Warranty</b>		
Full One-Year Warranty††	In-Home	In-Home
Nine-Year Magnetron Warranty†† (10 years total)	Limited	Limited

\*SS = Stainless Steel, WW = White on white, CC = Bisque, BB = Black on black.

\*\*Exterior dimensions: height includes feet.

†Pub. No. 4-A019 is available at additional cost.

††See written warranty for details.

### Built-In Trim Kit For .9 Cu. Ft. Microwave Oven

For a custom built-in appearance, this kit allows built-in installation of the Spacemaker II™ microwave oven into a wall or cabinet alone, and is U.L.-approved for installation over a GE single electric wall oven. This kit should not be installed over a gas wall oven.

### Trim Kits for Model JEM31

JX827SS—Stainless Steel, JX827WN—White,  
JX827BN—Black, JX827CD—Bisque

## Countertop Microwave Oven Optional Trim Kits

### 30" Deluxe Trim Kit For 1.8 Cu. Ft. Microwave Ovens

This trim kit allows for built-in installation of the 1.8 countertop microwave oven in a wall or cabinet alone, or over a GE 30" single electric wall oven.

#### 30" Deluxe Trim Kits for Model JE1860

JX1830SB—Stainless Steel

JX1830WB—White

JX1830CB—Bisque

JX1830BB—Black

### 27" Deluxe Trim Kit For 1.8 Cu. Ft. Microwave Ovens

The 27" deluxe trim kit allows a 1.8 countertop microwave oven to be built into a wall or cabinet alone, or over a GE 27" single electric wall oven for a complete one-piece built-in integrated appearance.

#### 27" Deluxe Trim Kits for Model JE1860

JX1827SB—Stainless Steel

JX1827WB—White

JX1827CB—Bisque

JX1827BB—Black

### 30" Deluxe Trim Kit For 1.6 Cu. Ft. Microwave Ovens

This trim kit allows for built-in installation of the 1.6 countertop microwave oven in a wall or cabinet alone, or over a GE 30" single electric wall oven.

#### 30" Deluxe Trim Kits for Model JE1660

JX1530MWW—White

JX1530MBW—Black

### 27" Deluxe Trim Kit For 1.6 Cu. Ft. Microwave Ovens

The 27" deluxe trim kit allows a 1.6 countertop microwave oven to be built into a wall or cabinet alone, or over a GE 27" single electric wall oven for a complete one-piece built-in integrated appearance.

#### 27" Deluxe Trim Kits for Model JE1660

JX1527MWW—White

JX1527MBW—Black

### Deluxe Trim Kits For 1.5 Cu. Ft. Microwave Ovens

Built-in trim kits allow installation in a wall, cabinet alone, or over a GE 30" or 27" single electric wall oven. Use a convection wall oven under these convection microwave ovens for a complete convection cooking center.

#### 30" Deluxe Trim Kits for Model JE1590

JX1530CSC—Stainless

JX1530CWC—White

JX1530CCC—Bisque

JX1530CBC—Black

#### 27" Deluxe Trim Kits for Model JE1590

JX1527CSC—Stainless

JX1527CWC—White

JX1527CCC—Bisque

JX1527CBC—Black

# GE Profile™ Built-In Dishwashers

	GE Profile™			
	PDW7880GSS	PDW7800GCC PDW7800GWW PDW7800GBB	PDW7700GCC PDW7700GWW PDW7700GBB	PDW7300GCC PDW7300GWW PDW7300GBB
<b>Features</b>				
Front appearance	Contoured Door	Contoured Door	Flat Door	Contoured Door
Upscale flush design	●	●	●	●
Long door design	●	●	●	●
Energy Star® qualified	●	●	●	●
Wash system	ExtraClean™	ExtraClean™	ExtraClean™	ExtraClean™
Wash arms	3	3	3	3
Wash levels	6-Direct Feed	6-Direct Feed	6-Direct Feed	6-Direct Feed
Filtration	100% Triple with ExtraFine™ filter	100% Triple with ExtraFine™ filter	100% Triple with ExtraFine™ filter	100% Triple with ExtraFine™ filter
Dual pumps/two motors	●	●	●	●
Food disposer	Piranha™ Hard Food	Piranha™ Hard Food	Piranha™ Hard Food	Piranha™ Hard Food
Sensor	ExtraClean™	ExtraClean™	ExtraClean™	ExtraClean™
Automatic temperature control	●	●	●	●
<b>Controls</b>				
Control type	Electronic- Light-Touch	Electronic- Light-Touch	Electronic- Light-Touch	Electronic- Light-Touch
Cycle progress indicators	Countdown Display 6 Status Lights	Countdown Display 6 Status Lights	Countdown Display 6 Status Lights	6 Status Lights
Touchpads	12	12	12	11
Cycles/Options	Variable	Variable	Variable	Variable
Last cycle memory	●	●	●	●
<b>Cycle Selections*</b>				
Anti-Bacteria (NSF**)	●	●	●	●
Cookware	●	●	●	●
Normal wash	●	●	●	●
China/Crystal	●	●	●	●
Glasses cycle	●	●	●	●
SpeedCycle™ (Wash & Dry)	●	●	●	●
Rinse only	●	●	●	●
<b>Options/Enhancements/Extras</b>				
Delay start	1-9 Hour	1-9 Hour	1-9 Hour	2/4/8 Hour
Hi temp wash	Added Heat	Added Heat	Added Heat	Added Heat
Hi temp rinse	Auto w/Added Heat	Auto w/Added Heat	Auto w/Added Heat	Auto w/Added Heat
PreWash option	●	●	●	●
Heated Dry	●	●	●	●
HotStart™ feature	Automatic	Automatic	Automatic	Automatic
Child lock-out	●	●	●	●
<b>Racking</b>				
Racking system	Tall-Over-Tall™	Tall-Over-Tall™	Tall-Over-Tall™	Tall-Over-Tall™
Upper rack	Nylon Deep Tiered	Nylon Deep Tiered	Nylon Deep Tiered	Nylon Deep Tiered
Lower rack	Nylon Towerless	Nylon Towerless	Nylon Towerless	Nylon Towerless
Ball Tines	Upper/Lower	Upper/Lower	Upper/Lower	Upper/Lower
Fold-down tine flexibility	4 Upper w/2 Multi-Position/ 4 lower	4 Upper w/2 Multi-Position/ 4 lower	4 Upper w/2 Multi-Position/ 4 lower	2 Upper w/1 Multi-Position/ 2 lower
	4 Utility w/StemSafe™-Upper ExtraShelf-Lower	4 Utility w/StemSafe™-Upper ExtraShelf-Lower	4 Utility w/StemSafe™-Upper ExtraShelf-Lower	2 Utility w/StemSafe™-Upper Super Capacity-3-Piece
Hard countertop installation	Ready	Ready	Ready	Ready
Calrod® heater	Multi-Wattage	Multi-Wattage	Multi-Wattage	Multi-Wattage
Rinse aid dispenser	With Indicator and Adjustment	With Indicator and Adjustment	With Indicator and Adjustment	With Indicator and Adjustment
Latch	Squeeze	Squeeze	Squeeze	Squeeze
<b>Quiet</b>				
Sound insulation package	QuietPower™ IV	QuietPower™ IV	QuietPower™ IV	QuietPower™ IV
Tub insulation (Thinstall™)	With Mastic	With Mastic	With Mastic	With Mastic
Door insulation and mastic	●	●	●	●
QuietPower™ motor	●	●	●	●
ActiveVent II system	●	●	●	●
Tub collar trim	●	●	●	●
Electronic control system	●	●	●	●
Quiet water valve	●	●	●	●
PermaTuf® tub & door liner	●	●	●	●
<b>Appearance</b>				
Colors available***	SS	CC, WW, BB	CC, WW, BB	CC, WW, BB
<b>Weights &amp; Dimensions</b>				
Approximate shipping wt. (lbs.)	90	90	90	90
Height w/legs retracted (in.)	34-1/8	34-1/8	34-1/8	34-1/8
Overall width (in.)	24	24	24	24
Overall depth (in.)	25-1/4	25-1/4	25-1/4	25-1/4
<b>Warranty</b>				
1 Year Full Parts & Labor	●	●	●	●
2nd Year Parts Only	All Parts	All Parts	All Parts	All Parts
2nd thru 5th Year Parts Only	Electronic Controls, Nylon Racks	Electronic Controls, Nylon Racks	Electronic Controls, Nylon Racks	Electronic Controls, Nylon Racks
Lifetime Parts & Labor	Tub & Door Liner	Tub & Door Liner	Tub & Door Liner	Tub & Door Liner

\*Sensor controlled.

\*\*Certified by National Sanitation Foundation

\*\*\*SS = Stainless steel, CC = Bisque, WW = White on white, BB = Black on black

Refrigeration

Cooking Products

Microwave Ovens

Dishwashers

Clothes Care

# Washer

	GE Profile™
	WPSE7003A
<b>Capacity</b>	
Capacity cu. ft.	Super Plus 3.2
<b>Features</b>	
Controls	One-Touch Electronic
Custom cycles	2
Adaptive Logic	●
Speed Wash	●
Stain Wash	●
Cycle status lights	●
Wash/rinse temps	4
Wash/spin speed comb.	5
Water Levels	5
PerfecTemp Plus	●
SpotSpray	●
Fabric softener dispenser	●
Bleach dispenser	●
Self-cleaning filter	●
Agitator	GentlePower™
End-of-cycle signal	Deluxe
Number of wash cycles	Multiple
Cycle Countdown	LED
Cycles	
Whites	●
Colors	●
Dark Colors	●
Easy Care	●
Hand-Wash	●
Optional Soil Levels	
Heavy Soil	●
Normal Soil	●
Light Soil	●
Cottons Regular	
Extra Heavy Soil	●/Stain Wash
Heavy Soil	●
Medium Soil	●
Light Soil	●
Easy Care	
Extra Heavy Soil	●/Stain Wash
Heavy Soil	●
Medium Soil	●
Light Soil	●
Hand Wash	
Extra Heavy Soil	●/Stain Wash
Heavy Soil	●
Medium Soil	●
Light Soil	●
Presoak	●
Quick Rinse (Prewash)	●
Spin Only	●
2nd Rinse	●
Extended Spin	●
Delay Start	1-8 Hours
Color lid instructions	●
Color stain guide	●
<b>Quiet</b>	
Quiet Insulation Package	Hush Quiet Plus
<b>Appearance</b>	
Colors available*	WW/AA†
<b>Weights &amp; Dimensions</b>	
Approx. shipping weight	160
Dimensions (W x H x D in inches)	27 x 42 x 25-1/2

\*WW = White on white.

†Almond available in limited quantities.

# Dryer

	Electric	GE Profile™
	Gas	DPSE592EA
		DPSE592GA
<b>Capacity</b>		
Capacity cu. ft.		Super 7.0
<b>Features</b>		
Controls		One-Touch Electronic
Custom cycles		2
Adaptive Logic		●
Speed Dry		●
Antibacterial cycle		●
Cycle status lights		●
Temperature mgmt. system		Sensor Dry Plus
Heat selections		5
Dryel® Cycle		●
Add Time option		●
End-of-cycle signal		Deluxe
Number of dry cycles		Multiple
Cycle Countdown		LED
Cycles		
Cottons		●
Mixed Loads		●
Easy Care		●
Knits/Sweaters		●
Delicates		●
Optional Dryness Levels		
More Dry		●
Dry		●
Less Dry		●
Damp		●
Options		
Wrinkle Care		Extended Tumble
Dryel®		●
Antibacterial		●
Dewrinkle		●
AirDry		●
Add Time		●
Timed Dry		80 Min.
Deluxe dryer rack		●
Interior light		●
Interior finish		DuraDrum™
Clean light filter reminder		●
<b>Quiet</b>		
Quiet Insulation Package		Hush Quiet Plus
QuietDrum		●
<b>Appearance</b>		
Colors available*		WW/AA†
<b>Weights &amp; Dimensions</b>		
Approx. shipping wt. (Elec.)		130
Approx. shipping wt. (Gas)		125
Dimensions (W x H x D in inches)		27 x 42 x 28-1/4

\*WW = White on white.

†Almond available in limited quantities.



## Front-Loading Washer

	GE Profile™
	WPXH214A
<b>Capacity</b>	
Capacity	Extra-large
Cubic Feet	2.7
<b>Features</b>	
Wash/rinse temperatures	7
Water levels	Auto. Adjustment
Standard Rinse Cycles	4
Motor Speeds	Variable
ColorLogic™ 2000	●
Combinations*	HC, WW, WC, CC
Detergent dispenser (liquid/powder)	●
Bleach dispenser	●
Fabric softener dispenser	●
End-of-cycle signal	Fixed
Final Spin/Speed selections	4
Number of wash cycles	14
Cotton	
Heavy Soil	●
Medium Soil	●
Light Soil	●
Easy Care	
Medium Soil/Perm. Press	●
Light Soil/Wrinkle Free	●
Delicates/Ultra Care	●
Quick Wash	●
Extra-Rinse Cycle/Auto Option	3
Max. Spin speed	950
AutoTemp	●
Noise package	Deluxe
Energy star	●
Leveling legs	●
Rear rollers	●
Stainless steel wash drum	●
<b>Appearance</b>	
Colors available	Bisque, White on white
<b>Weights &amp; Dimensions</b>	
Approx. shipping wt. (lbs.)	217
Dimensions (W x H x D in inches)	26-3/4 x 36 x 24-3/4
Flexible installation	Undercounter, stacked, side-by-side

\*HC = Hot-Cold, WW = Warm-Warm, WC = Warm-Cold,  
CC = Cold-Cold.

## Front-Loading Dryer

	GE Profile™
	DPXH46EA/GA
<b>Capacity</b>	
Capacity	Extra-Large
Cubic Feet	5.7
<b>Features</b>	
Tumble Drying	●
Time Dry Cycles	1
Auto Dry Cycles	3
Sensor Dry	●
ColorLogic™ 2000	●
Temperature Options	4
Regular/Cottons	●
Medium/Perm. Press	●
Low/Delicates	●
Air Fluff/No Heat (Cool Down)	●
Wrinkle Care cycle	2
Moisture sensor	●
Drying rack	●
Auto Dry Cycles	
Cottons	●
Easy Care	●
Knits/Delicate	●
Cool Down	●
Quick Clean Lint Screen	●
End-of-Cycle Signal	Fixed
Drum Light	●
Reverse-A-Door	●
Dura Finish Top and Drum	●
Spill-Saver Top	●
Poly Tumbling Vanes	●
Leveling Legs	●
100% Front Serviceable	●
Exhaust Options (Electric/Gas)	4/3
Heavy-Duty Suspension System	●
<b>Appearance</b>	
Colors available	Bisque, White on white
<b>Weights &amp; Dimensions</b>	
Approx. Shipping Weight (Elec/Gas)	116
Dimensions (W x H x D in inches)	26-7/8 x 36 x 25-3/4
Flexible installation	Undercounter, stacked, side-by-side
LP conversion kit	WE25X10003

Refrigeration

Cooking Products

Microwave Ovens

Dishwashers

Clothes Care



## ***GE Appliances***

---

*General Electric Company  
Louisville, Kentucky 40225  
GEAppliances.com*

GE has a policy of continuous improvement of its products and reserves the right to change materials and specifications without notice.