

Refrigerated Prep Table + Cold Wall Sealed Condiment Rail

- Prep, store, and assemble sandwiches, salads, and more without leaving a single workstation
- Refrigerated sealed condiment rail allows for ingredients to stay fresh overnight
- Casters (2 locking) included for easy mobility
- Includes removable stainless steel grates and plastic catch trays



UCPT565-SS61A



UCPT588-SS61A

Model	Description	Voltage/Hz/Phase/Amps	Shipping Weight
UCPT565-SS61A	2 Door Refrigerated Prep Table + 65" Cold Wall Sealed Condiment Rail	115v / 60hz / 1 / 7	653 lb
UCPT588-SS61A	3 Door Refrigerated Prep Table + 88" Cold Wall Sealed Condiment Rail	115v / 60hz / 1 / 9	741 lb

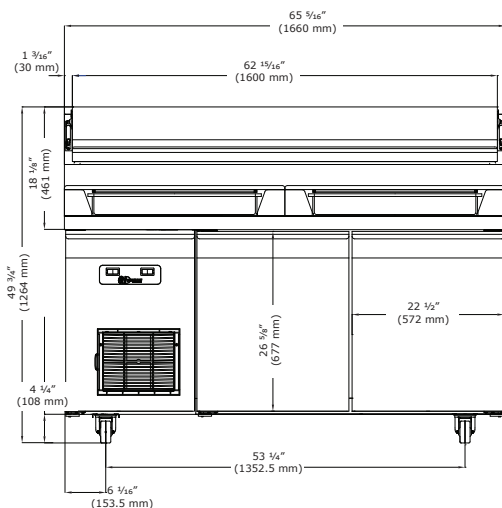
Specifications	
UCPT565-SS61A dimensions: 63 11/16" H x 65 5/16" W x 36 5/8" D	UCPT588-SS61A dimensions: 63 11/16" H x 88 5/16" W x 36 5/8" D
UCPT565-SS61A volume: 14.95 cu ft	UCPT588-SS61A volume: 21.89 cu ft
UCPT565-SS61A includes 4 epoxy coated wire shelves	UCPT588-SS61A includes 6 epoxy coated wire shelves
UCPT565-SS61A: high efficiency compressor	
UCPT588-SS61A: high efficiency compressor, side mount	
AISI 304 stainless steel interior & exterior	
Autodefrost	
Base temperature range: 28°F to 46°F	Condiment rail temperature range: 36°F to 50°F
CFC-free high-density polyurethane insulated cabinet	
Electronic digital temperature control with alarms	
Environmentally friendly 449a refrigerant: UCPT565-SS61A: 35 oz (1.0 kg) / UCPT588-SS61A: 49 oz (1.4 kg)	
Epoxy coated, sealed evaporator eliminates potential corrosion	
Factory pre-wired for dedicated outlet, 11 ft cord and plug included NEMA 5-15P	
Interior rounded corners for easy cleaning	
NSF/ANSI Standard 7 compliant	
Pans not included	
Self-lubricating, sealed cast iron evaporator fan motor with high volume airflow design	

Accessories	Description	Shipping Weight
ULA4082514	(1) Stainless steel shelf guide for prep tables, 24"	.88 lb
ULAQ32-4666-ETL	(1) Epoxy coated wire shelf, 17 7/8" x 25 7/8" for prep tables	2.2 lb

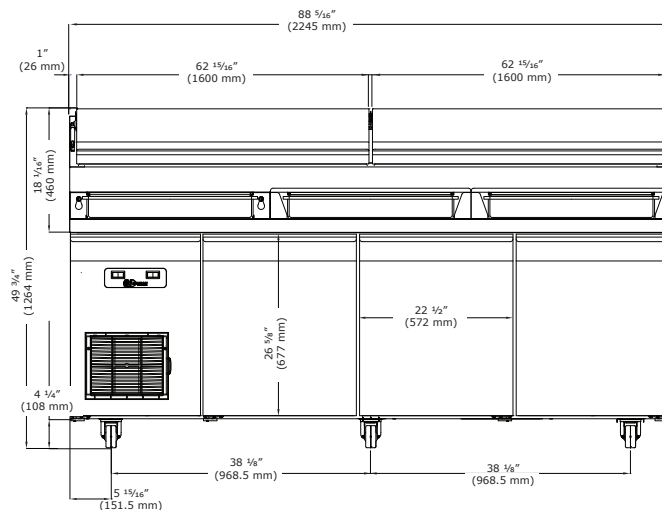


Product Specifications • Refrigerated Prep Table

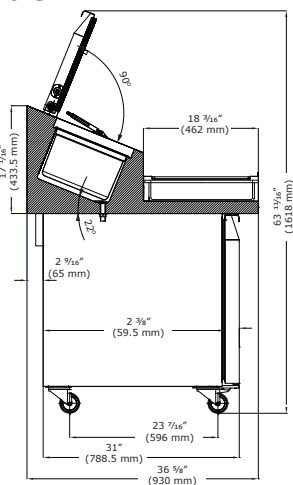
Front (2 Door)



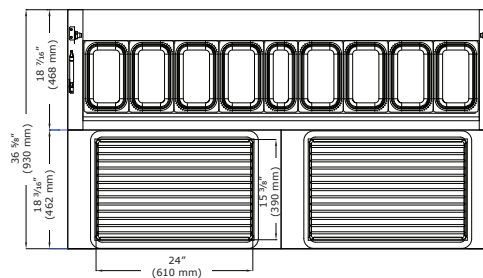
Front (3 Door)



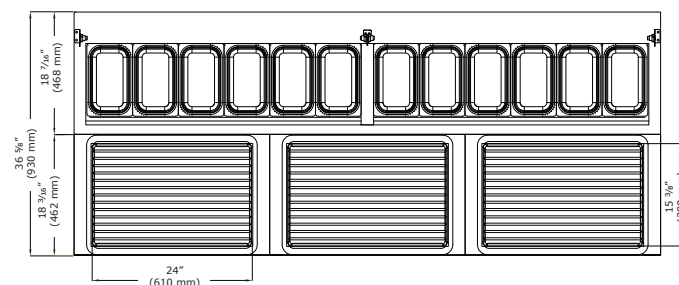
Side



Top (2 Door)*



Top (3 Door)*



*Pans not included

Commercial Warranty

3 Year (parts & labor) / 5 year sealed system (parts)

See complete warranty for details

